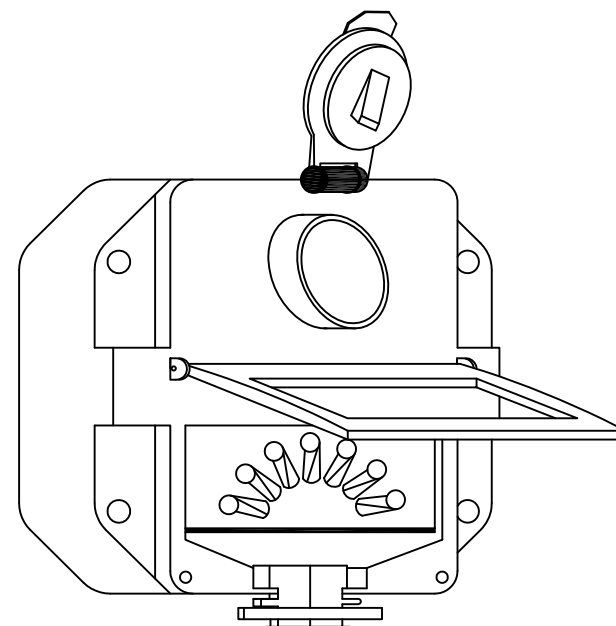


A. POLLAK

B. TRUCKLITE



1. 7 WAY SPLIT PIN RECEPTACLE MEETING S.A.E. J5553 & J555A.
2. EXACT LOCATION SHALL BE DETERMINED UPON AWARD OF BID PRIOR TO PILOT MODEL.
3. WIRING SHALL BE IN CONFORMANCE WITH ATA COLOR CODING SYSTEM.
4. SEALED AND WEATHER-RESISTANT
5. REPLACEABLE CIRCUIT BREAKERS (15 AMP / OR 20 AMP).
6. REFERENCED ACCEPTABLE MODELS

A. POLLACK 11-737
 11-800
 11-801
 11-802

(ALL ITEMS ARE REQUIRED TO MAKE UP THE COMPLETE ASSEMBLY)

B. TRUCK-LITE PART NO. 50806-COMPLETE.

NOTE: NO SUBSITUTE

PA DEPARTMENT OF TRANSPORTATION

REVISIONS			7 WAY TRAILER CONNECTOR		
NO.	DATE	BY			
1	03-30-00	GAH			
2	02-27-07	CJW	DRAWN BY DLW	SCALE N/A	EQN-81A
3			DATE 11-21-97	CHK'D BY RED	SHEET 1 OF 1

THIS VEHICLE SHALL COMPLY WITH THE RULES OF THE NATIONAL HIGHWAY TRAFFIC SAFETY ADMINISTRATION (NHTSA) IN THAT:

THE MOUNTING HEIGHT OF THE HORIZONTAL STRIPES ARE RESTRICTED TO THE SAME HEIGHT AS OTHER RETROFLECTIVE DEVICES CURRENTLY REQUIRED BY STANDARD NUMBER 108. THE CENTER OF THE MATERIAL MUST NOT BE LESS THAN 15in. ABOVE THE ROAD SURFACE, AND THE UPPER EDGE NOT MORE THAN 60in. ABOVE IT.

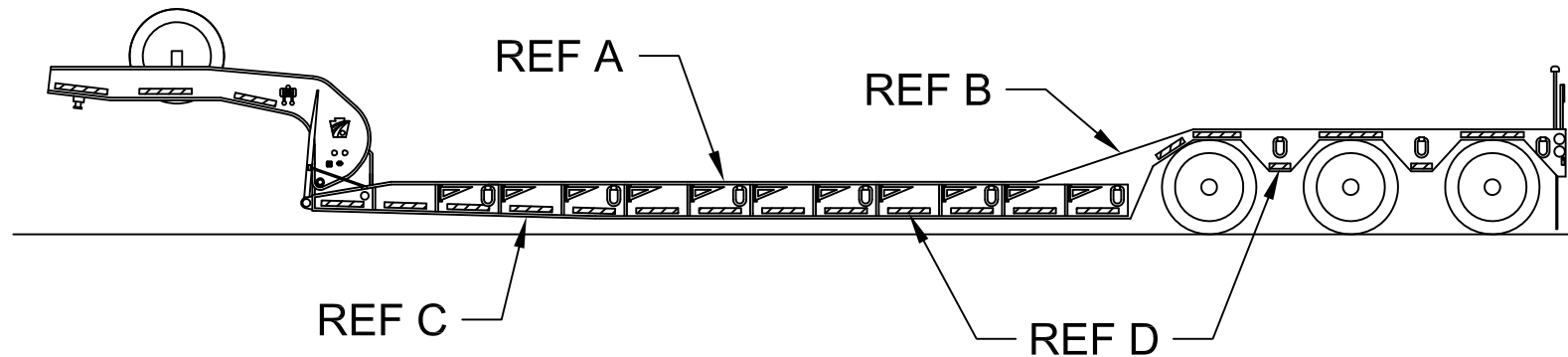
REFLECTIVE MATERIAL SHALL BE APPLIED TO THE HORIZONTAL BAR OF THE REAR UNDERRIDE DEVICE IN ADDITION TO THE FLOOR LEVEL HORIZONTAL STRIPE. THE UPPER CORNERS ARE TO BE MARKED BY TWO 90 DEGREE ANGLE BRACKETS OF WHITE STRIPES 12in. BY TWO INCHES WIDE, INDICATING THE WIDTH AND HEIGHT OF THE TRAILER.

THE CONFIGURATION SHALL IDENTIFY THE VEHICLE AS TO ITS ESTIMATED SIZE AND THE CLOSEING DISTANCE TO IT. THE DISTRIBUTION OF SPACES AND MATERIALS SHALL BE AS UNIFORM AS PRACTICAL AND INDICATE THE FULL LENGTH AND WIDTH OF THE VEHICLE. THE COLORS SHALL BE PLACED IN ALTERNATING SEQUENCE WITH MORE THAN TWO-THIRDS OF THE MATERIAL IN COLOR.

CONSPICUITY TAPE SHALL BE REFLECTORIZED. 2in. WIDE, MATERIAL SHALL BE APPLIED. MATERIAL SHALL BE RED/SILVER CONTINUOUS BACKING REFLEXITE CONSPICUITY II SYSTEM OR 3M SCOTCHLITE CONSPICUITY SHEETING SERIES 980.

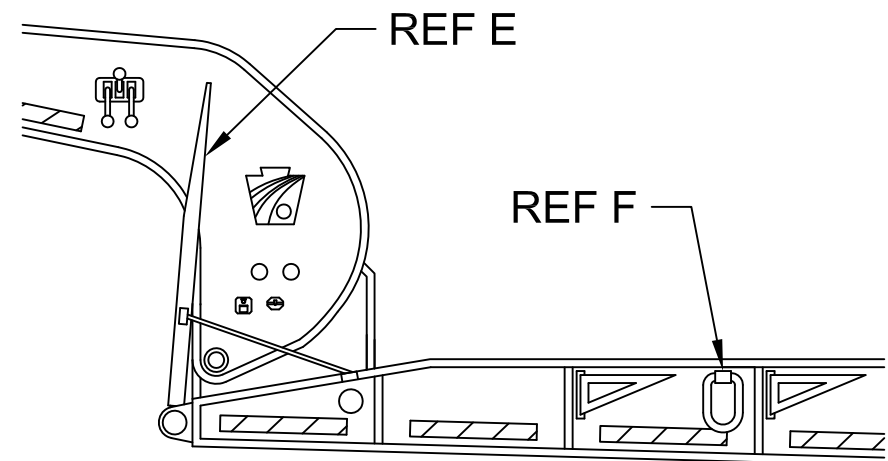
THE MOST CURRENT REGULATIONS SHALL BE ADHERED TO.

PA DEPARTMENT OF TRANSPORTATION						
REVISIONS			CONSPICUITY TAPE STRIPING REQUIREMENTS			
NO.	DATE	BY				
1	05-16-02	DWG				
2	11-03-06	CJW	DRAWN BY	DLW	SCALE	N/A
3	01-02-09	MHH	DATE	11-07-97	CHK'D BY	DMA
			EQN-127A			
			SHEET 1 OF 1			

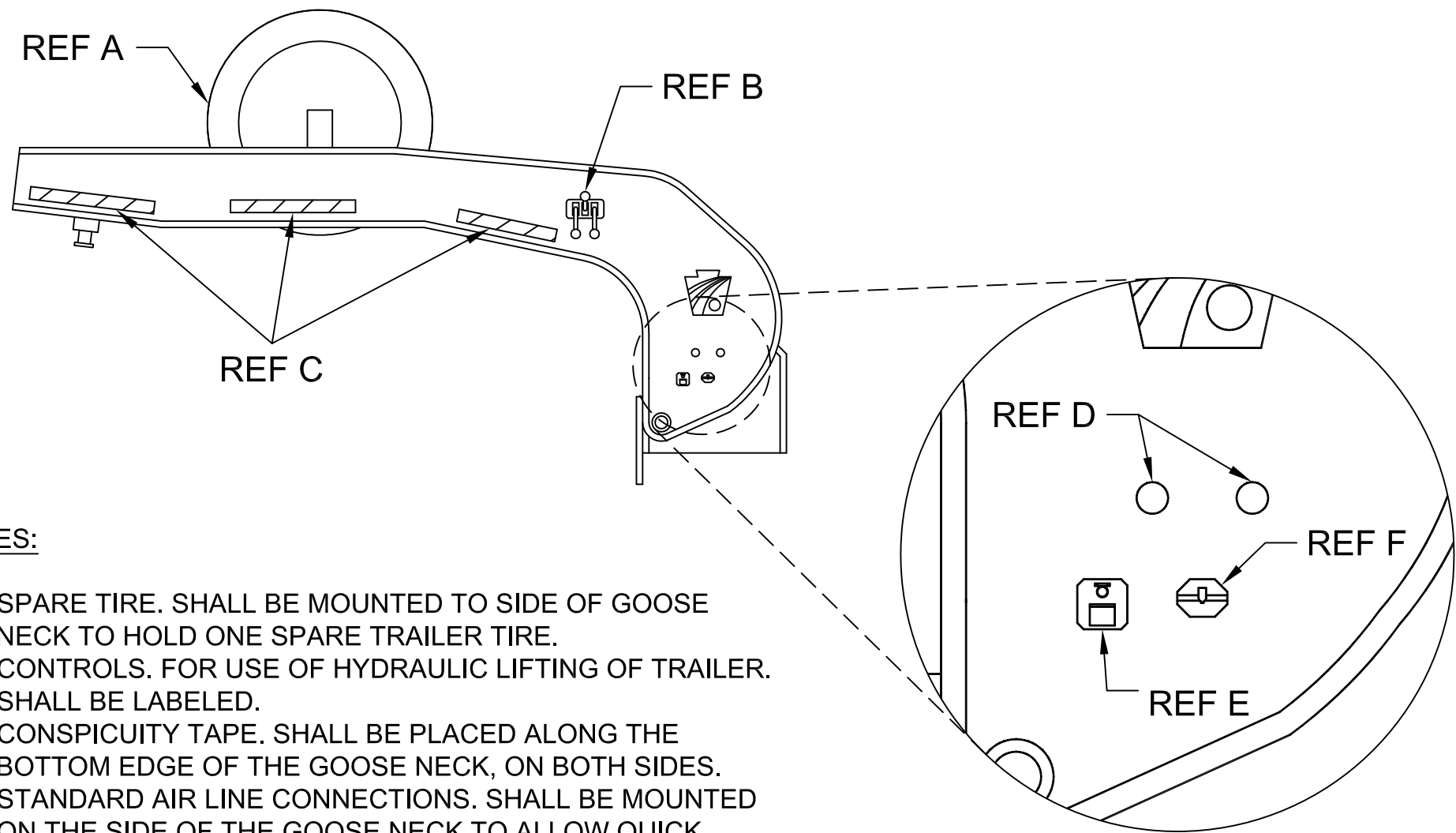


NOTES:

- A. PLATFORM. SHALL HAVE A MINIMUM 1 3/4 IN. OAK OR A MINIMUM 1 1/4 IN. APITONG FULL FLOOR.
- B. REAR RISER SECTION. SHALL RUN AT 3:1 RATIO FOR A MAXIMUM OF 18 DEGREES BETWEEN THE MAIN DECK. AND THE REAR FRAME AREA. SHALL ALSO HAVE A MAXIMUM OF 18 INCH DROP BETWEEN THE DECK AND THE REAR LOAD PLATFORM OF THE TRAILER.
- C. UNDER-SLOPE. THE BOTTOM BEAM SHALL HAVE A MINIMUM TAPER OF 9 FEET FRONT TO BACK TO EASE LOADING.
- D. CONSPICUITY TAPE. SHALL BE PLACED ON THE BOTTOM EDGE OF THE TRAILER AND THE EDGES SURROUNDING THE WHEELS.
- E. ACCESS RAMPS. TWO 41 IN. LONG X 22 IN. WIDE, FRONT FOLD-DOWN LOADING RAMPS WITH OAK INSERTS TO FORM A 7.2-DEGREE APPROACH TO THE MAIN DECK AREA. THESE SLIDING RAMPS SHALL DOUBLE HINGED AND SPRING ASSISTED.
- F. LASHING RINGS. SIXTEEN DROP FORGED LASHING D'S OF 1 IN. DIAMETER STEEL (C1030 STEEL CONSTRUCTION)



PA DEPARTMENT OF TRANSPORTATION						
REVISIONS			LOWBOY PAVER STYLE TRAILER			
NO.	DATE	BY				
1	08-08-18	KBD				
2			DRAWN BY	JJB	Combined With	SHEET 250P
3			DATE	06-23-15	CHK'D BY	SHEET 1 OF 5
					N/A	N/A



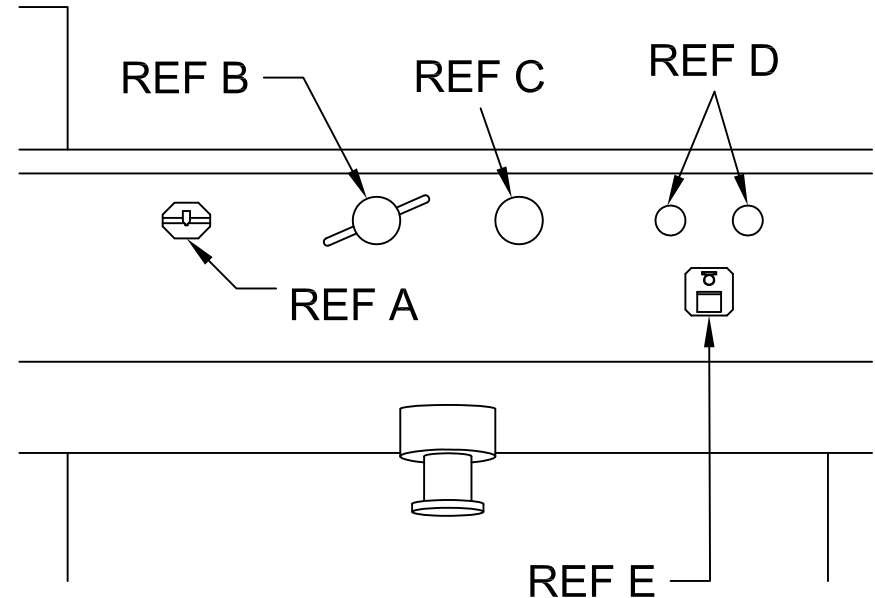
NOTES:

- A. SPARE TIRE. SHALL BE MOUNTED TO SIDE OF GOOSE NECK TO HOLD ONE SPARE TRAILER TIRE.
- B. CONTROLS. FOR USE OF HYDRAULIC LIFTING OF TRAILER. SHALL BE LABELED.
- C. CONSPICUITY TAPE. SHALL BE PLACED ALONG THE BOTTOM EDGE OF THE GOOSE NECK, ON BOTH SIDES.
- D. STANDARD AIR LINE CONNECTIONS. SHALL BE MOUNTED ON THE SIDE OF THE GOOSE NECK TO ALLOW QUICK CONNECTION BETWEEN GOOSE NECK AND TRAILER.
- E. 7 PIN CONNECTION. SHALL BE MOUNTED ON THE SIDE OF THE GOOSE NECK TO ALLOW QUICK CONNECTION BETWEEN GOOSE NECK AND TRAILER. REFERENCE EQN-81A.
- F. 2 PIN CONNECTION. SHALL BE MOUNTED ON THE SIDE OF THE GOOSE NECK TO ALLOW QUICK CONNECTION BETWEEN GOOSE NECK AND TRAILER. REFERENCE EQN-81A.

PA DEPARTMENT OF TRANSPORTATION					
REVISIONS			LOWBOY PAVER STYLE TRAILER		
NO.	DATE	BY			
1	08-08-18	KBD			
2			DRAWN BY	JJB	Combined With EQN-1091
3			DATE	06-23-15	CHK'D BY N/A
			Scale	N/A	SHEET 250P
			SHEET 2 OF 5		

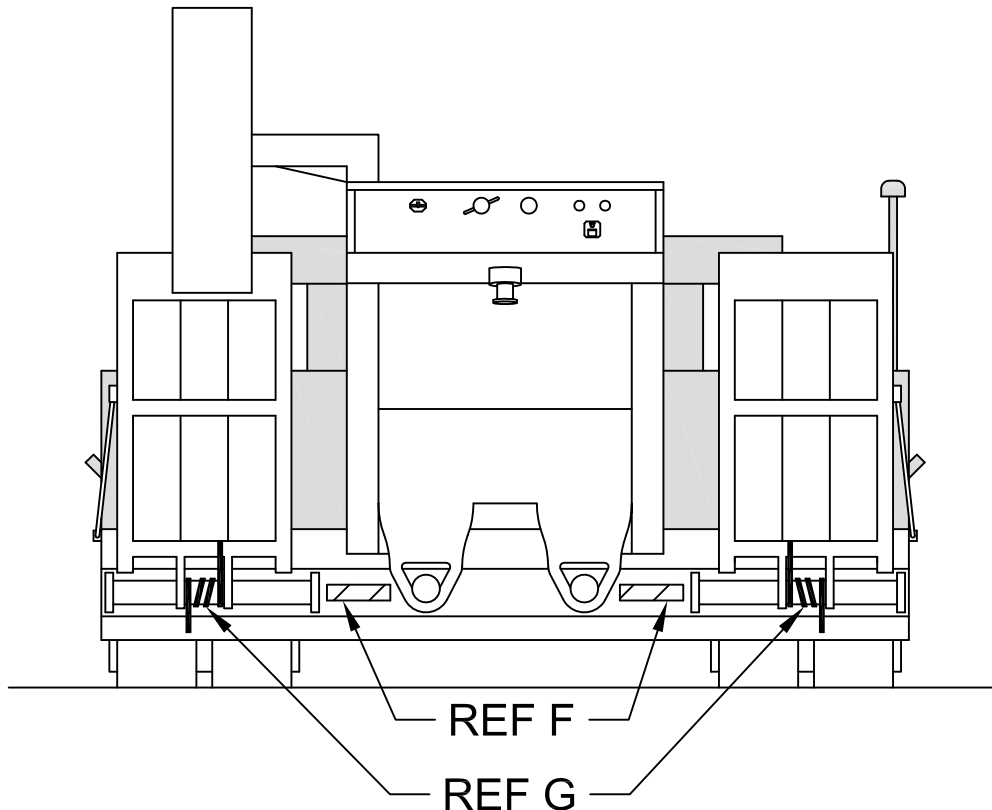
NOTES:

- A. 2 PIN CONNECTION. SHALL BE MOUNTED ON THE FRONT OF THE GOOSE NECK TO ALLOW QUICK CONNECTION BETWEEN TRACTOR AND GOOSE NECK.
- B. WET LINE PRESSURE. SHALL BE MOUNTED ON THE PASSENGER SIDE AND SHALL BE PLUMBED TO ACCEPT HYDRAULIC CONNECTIONS BETWEEN TRACTOR AND GOOSE NECK TO MAKE THE TRAILER COMPLETELY FUNCTIONAL AS A "WET UNIT". FITTINGS SHALL BE AEROQUIP PN#145135.
- C. WET LINE RETURN. SHALL BE MOUNTED ON THE DRIVER SIDE AND SHALL BE PLUMBED TO ACCEPT HYDRAULIC CONNECTIONS BETWEEN TRACTOR AND GOOSE NECK TO MAKE THE TRAILER COMPLETELY FUNCTIONAL AS A "WET UNIT". FITTINGS SHALL BE AEROQUIP PN#0451436.
- D. STANDARD AIR LINE CONNECTION. SHALL BE MOUNTED ON THE FRONT OF THE GOOSE NECK TO ALLOW QUICK CONNECTION BETWEEN TRACTOR AND GOOSE NECK.



NOTES:

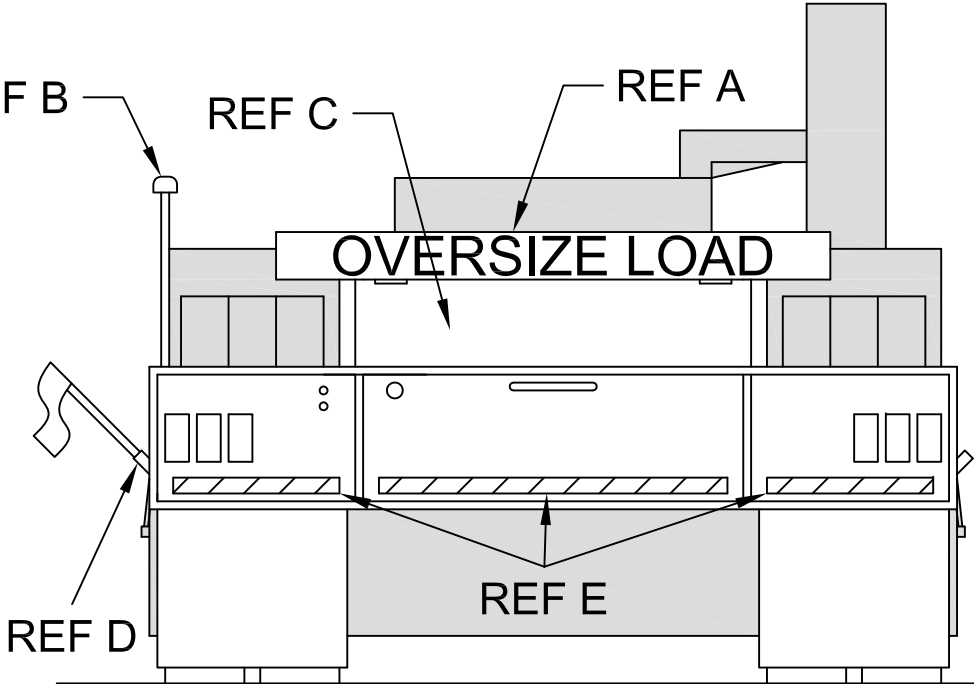
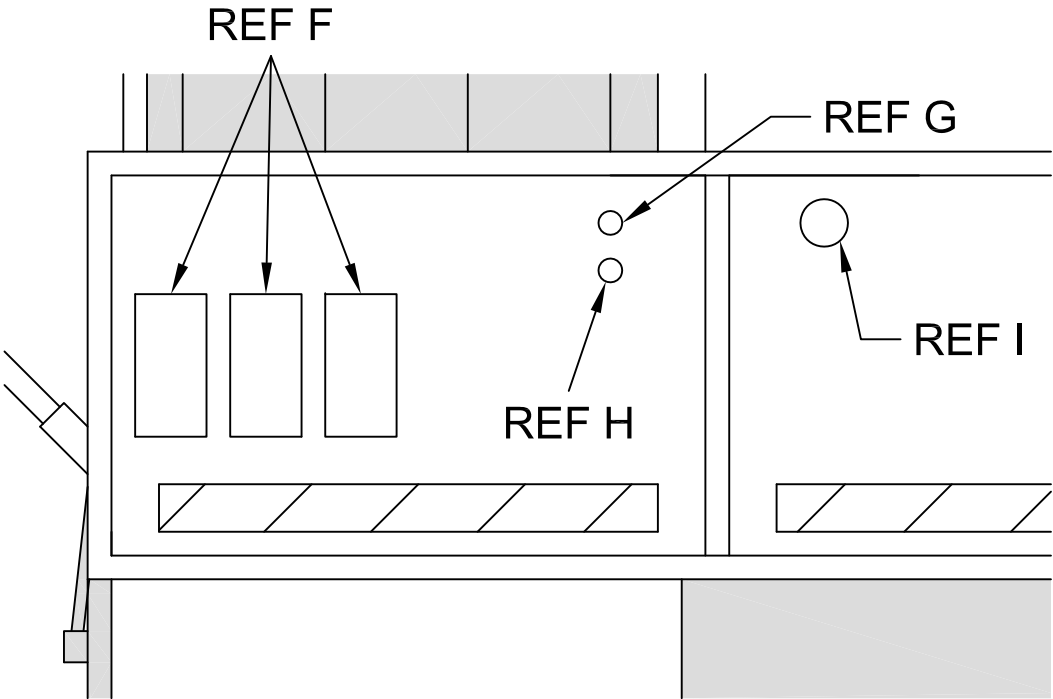
- E. 7 PIN CONNECTION. SHALL BE MOUNTED ON THE FRONT OF THE GOOSE NECK TO ALLOW QUICK CONNECTION BETWEEN TRACTOR AND GOOSE NECK. REFERENCE EQN-81A.
- F. CONSPICUITY TAPE. SHALL BE PLACED ON THE BOTTOM OF THE FRONT OF THE TRAILER.
- G. SPRINGS. SHALL BE PLACED BETWEEN THE HINGES OF BOTH RAMPS TO ASSIST WITH LIFTING OF THE RAMPS.



PA DEPARTMENT OF TRANSPORTATION					
REVISIONS			LOWBOY PAVER STYLE TRAILER		
NO.	DATE	BY			
1	08-08-18	KBD			
2			DRAWN BY	JJB	Combined With EQN-1091
3			DATE	06-23-15	CHK'D BY N/A
				Scale N/A	SHEET 250P SHEET 3 OF 5

NOTES:

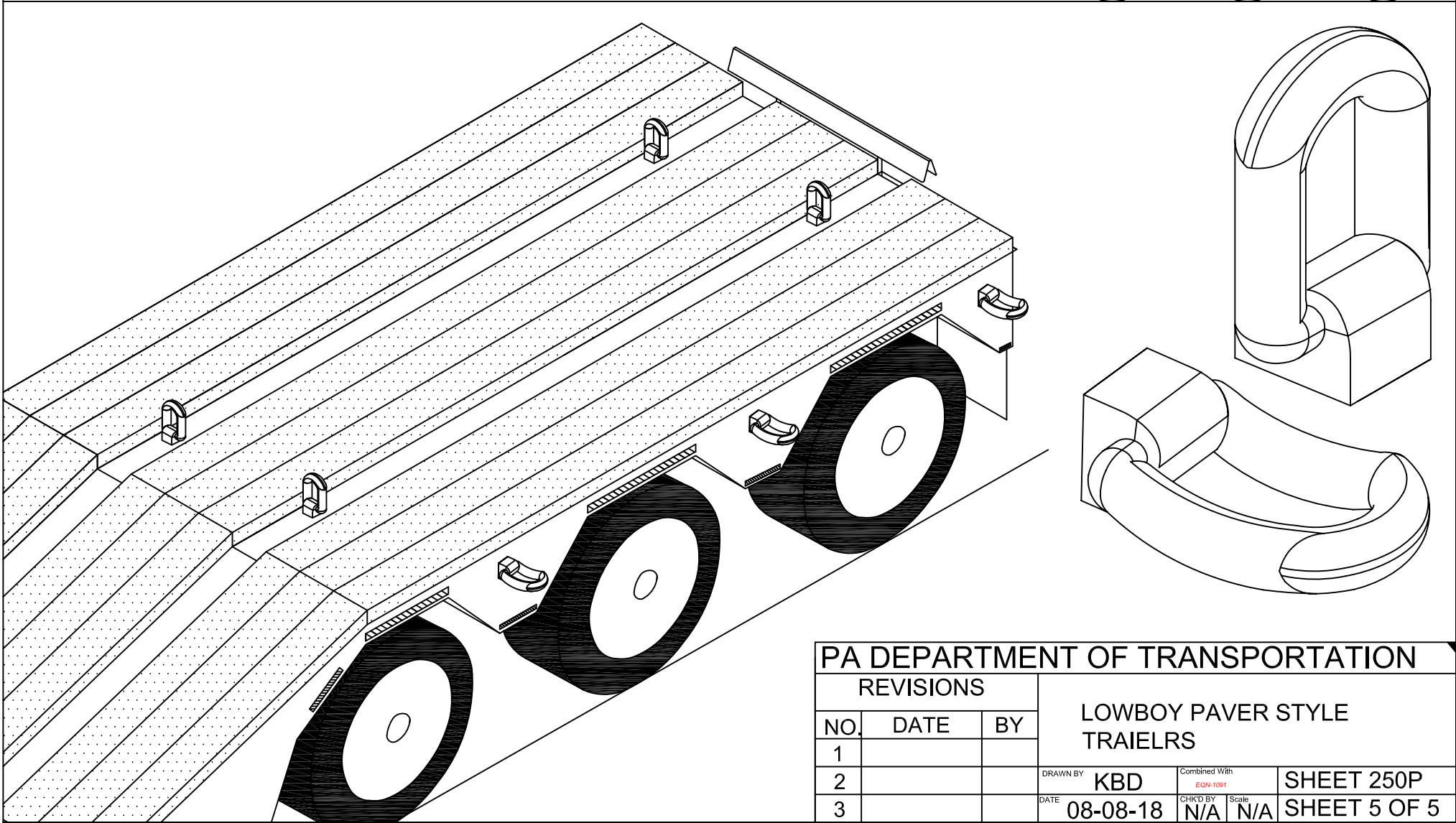
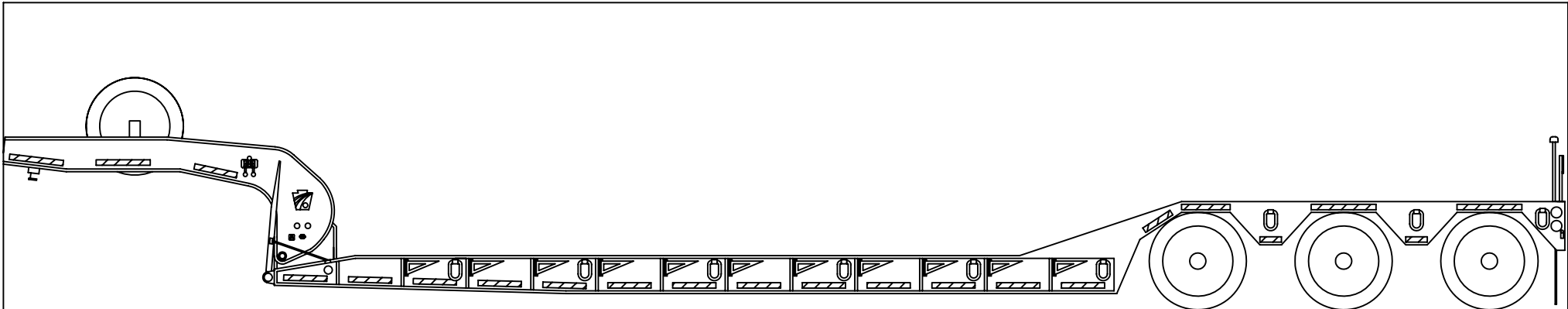
- A. SIGN. SHALL BE MOUNTED TO THE TOP OF THE ROLLER STOPPER. SHALL BE HINGED TO ALLOW FLIP-UP USE ONLY WHILE HAULING AN OVERSIZE LOAD. REFERENCE EQN-569.
- B. WARNING LIGHT. SHALL BE MOUNTED ON DRIVER SIDE OF DECK, ABOVE THE ROLLER STOPPER TO ALLOW 360 DEGREES OF VISIBILITY.
- C. ROLLER STOPPER. MOUNTED ON THE BACK OF THE DECK TO STOP HAULED MACHINERY FROM ROLLING OFF THE DECK.
- D. FLAG HOLDER. SHALL BE MOUNTED ON BOTH DRIVER AND PASSENGER SIDE OF THE REAR OF THE TRAILER TO ALLOW USE OF CAUTION FLAGS WHILE HAULING AN OVERSIZE LOAD.
- E. CONSPICUITY TAPE. SHALL BE PLACED ON THE BOTTOM OF THE REAR OF THE TRAILER.



NOTES:

- F. LIGHT PACKAGE. WHELEN LIGHT KIT #PADOTSY11. TWO OUTSIDE LIGHTS SHALL BE BRAKE/TURN LIGHTS AND INSIDE LIGHT SHALL BE AMBER WARNING LIGHT.
- G. SWITCH1. SHALL BE EXTERIOR SEALED WEATHER PROOF TYPE, AND PERMANENTLY LABELED THAT WILL ENABLE ON/OFF OF **ALL** (INCLUDING STROBE) LIGHTS.
- H. SWITCH2. SHALL BE EXTERIOR SEALED WEATHER PROOF TYPE, AND PERMANENTLY LABELED THAT WILL ENABLE ON/OFF OF STROBE LIGHT.
- I. LIFT AXLE SWITCH. ALLOWS USE OF REAR LIFT AXLE.

PA DEPARTMENT OF TRANSPORTATION						
REVISIONS			LOWBOY PAVER STYLE TRAILER			
NO.	DATE	BY				
1	12-29-16	JJB				
2	08-08-18	KBD				
3						
			DRAWN BY	JJB	Combined With	SHEET 250P
			DATE	06-23-15	EQN-1091	SHEET 4 OF 5
			CHK'D BY	N/A	Scale	N/A



PA DEPARTMENT OF TRANSPORTATION						
REVISIONS			LOWBOY PAVER STYLE TRAIELRS			
NO.	DATE	BY				
1						
2			DRAWN BY	KBD	Combined With	SHEET 250P
3			DATE	08-08-18	CHK'D BY	SHEET 5 OF 5
					Scale	
					N/A	