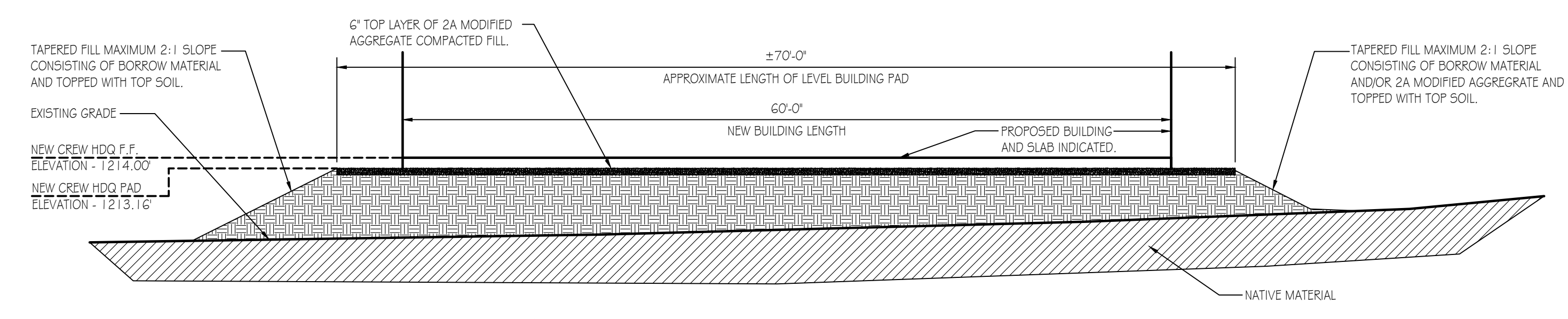
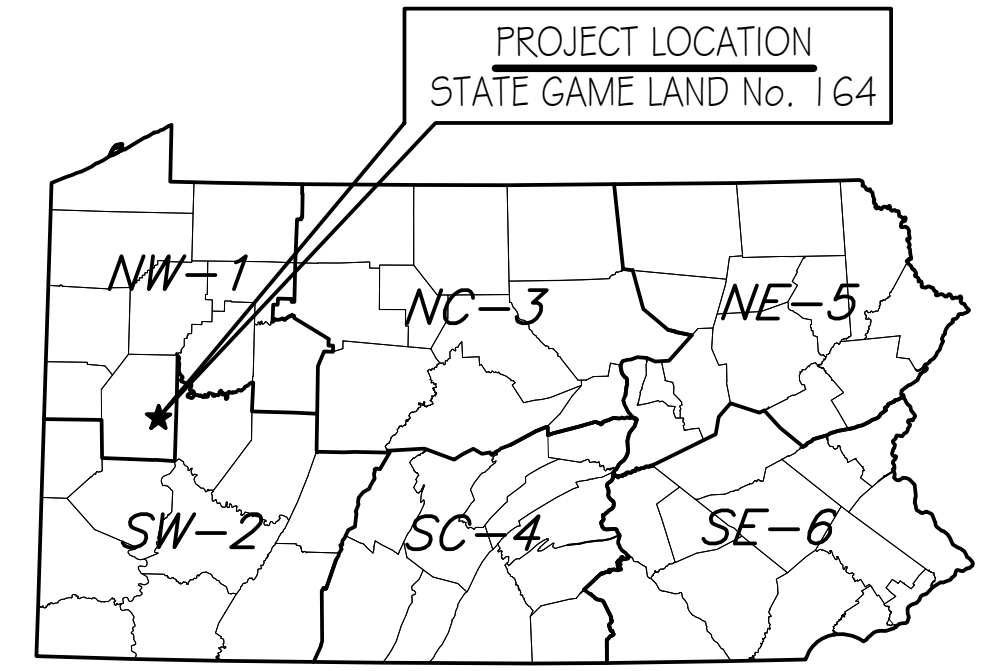


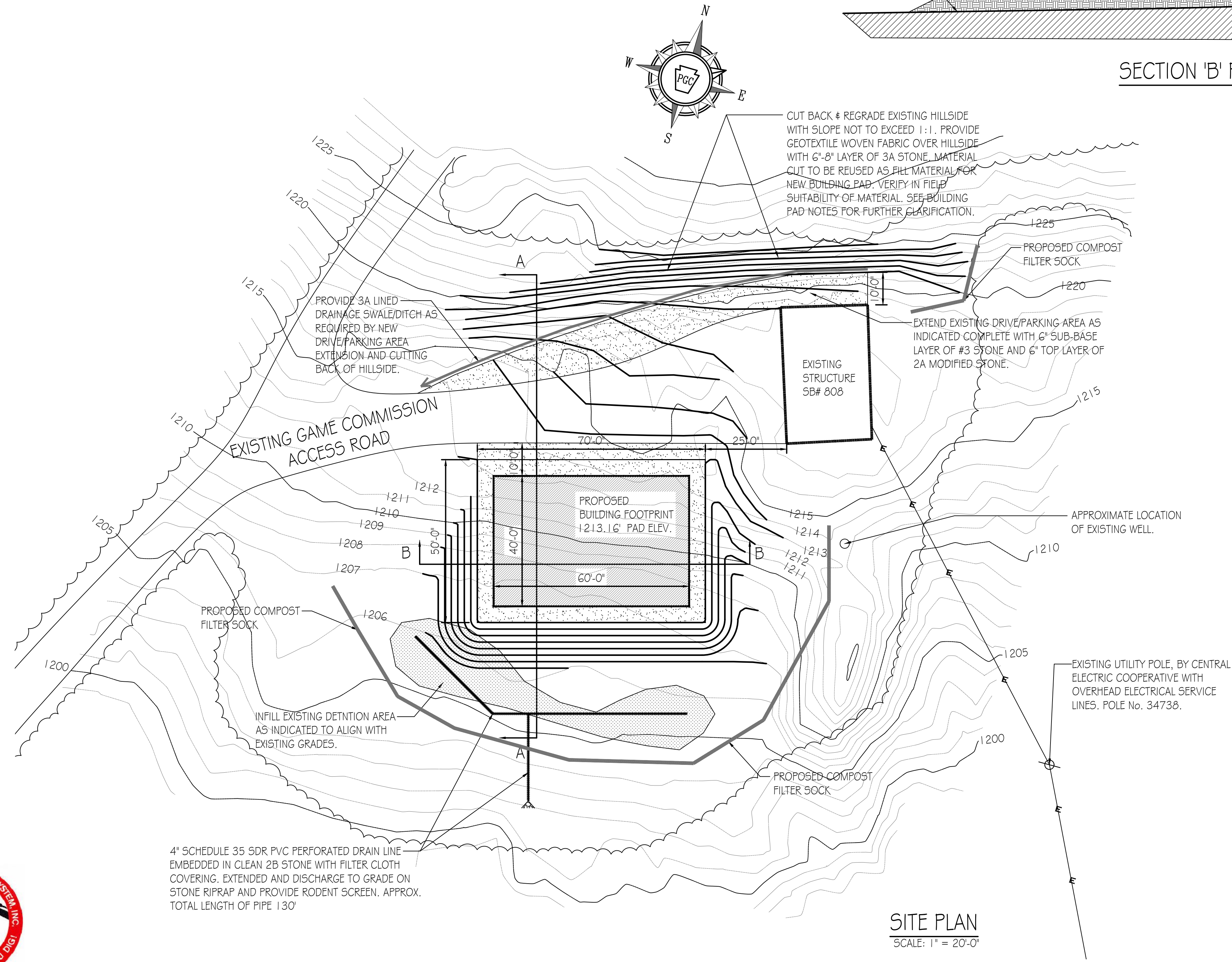
SECTION 'A' PROFILE OF BUILDING PAD  
SCALE: 1/8" = 1'-0"



SECTION 'B' PROFILE OF BUILDING PAD  
SCALE: 1/8" = 1'-0"



PROJECT MAP  
NOT TO SCALE

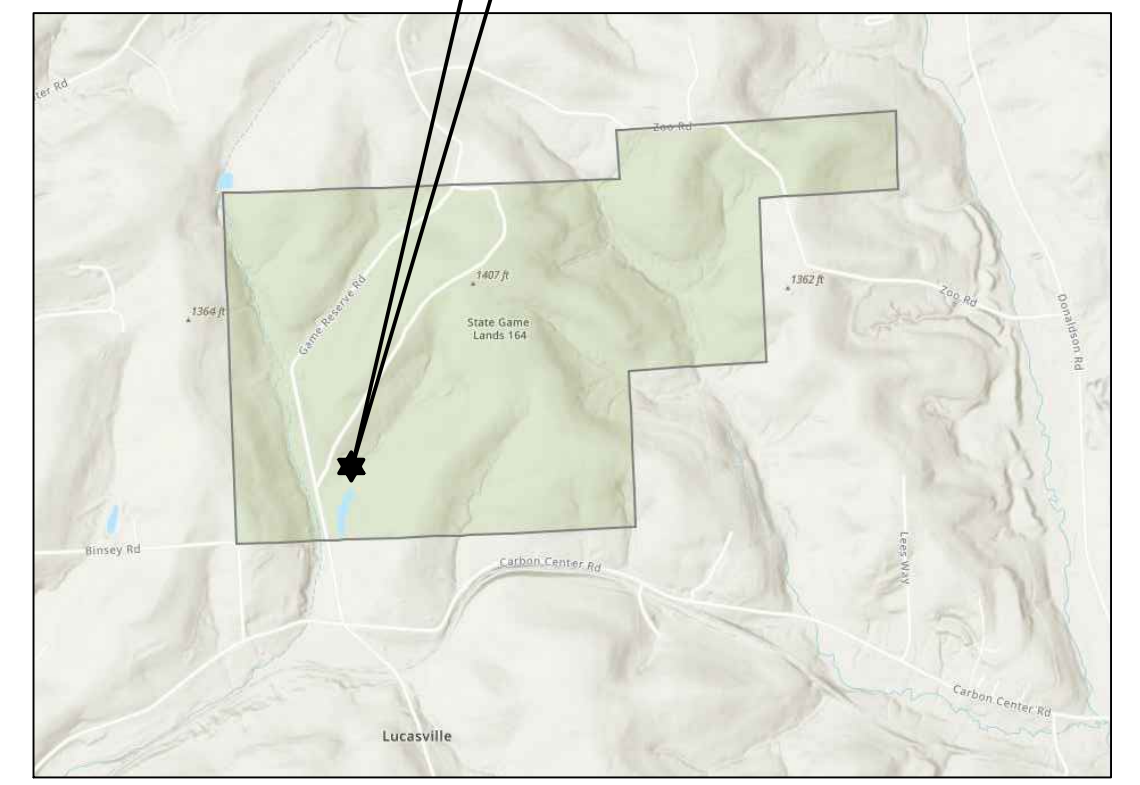


SITE PLAN  
SCALE: 1" = 20'-0"

**BUILDING PAD GENERAL NOTES:**

1. EXCAVATOR TO FIELD VERIFY ALL EXISTING GRADES IN FIELD.
2. STRIP EXISTING TOP SOIL/ FILL MATERIAL AS REQUIRED BY PROPOSED BUILDING PAD, DRIVE AND REGRADING WORK. TOP SOIL/ FILL MATERIAL TO BE STOCKPILED ON SITE AT LOCATION PER THE DIRECTION OF PGC REPRESENTATIVE. PROVIDE SILT SOCK OR OTHER APPROVED MEANS OF EROSION CONTROL AROUND TOP SOIL STOCKPILE AS REQUIRED UNTIL FINAL PLACEMENT.
3. PROXIMATE LEVEL BUILDING PAD SIZE - 50' x 70'.
4. SUITABLE FILL MATERIAL PROVIDED UNDER NEW BUILDING PAD TO BE PLACED IN 4' -6' LIFTS AND COMPACTED ON SITE WITH VIBRATORY ROLLER. ALL FILL MATERIAL TO BE IMPORTED, UNLESS SUITABLE MATERIAL IS FOUND ON SITE. SCREENING OF THE EXCAVATED FILL MAY BE NECESSARY TO SEPERATE OBJECTIONABLE STONES AND OTHER DEBRIS FROM THE FILL MATERIAL. MATERIAL SHALL BE FREE FROM ROOTS, BRUSH, FROZEN, OTHER . OBJECTIONABLE MATERIALS AND ALL STONES HAVING A DIMENSION GREATER THEN THREE (3) INCHES. THE PGC WILL DETERMINE THE SUITABILITY OF MATERIALS USED FOR CONSTRUCTION OF PAD DURING THE PLACEMENT AND DELIVERY OF MATERIALS.
5. ONCE THE MAJORITY OF THE FILL IS INSTALLED, THE TOP LAYER OF THE PAD IS TO CONSIST OF PENNDOT APPROVED 2A MODIFIED AGGREGATE COMPACTED WITH VIBRATOR ROLLER.
6. THE EDGES OF THE PAD ARE TO BE GENTLY TAPERED AT A MAXIMUM 2:1 SLOPE.
7. PROVIDE FINAL GRADING AND SEEDING OF ALL YARD/GRASS AREAS DISTURBED BY NEW BUILDING PAD CONSTRUCTION AND ASSOCIATED WORK. SEE SPECIFICATIONS FOR SPECIFIC INSTRUCTIONS AND DETAILS.

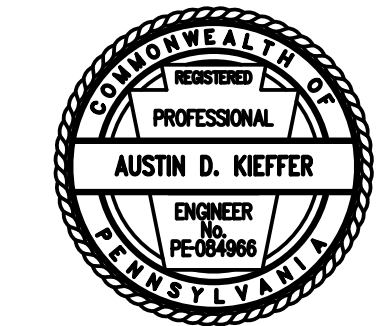
PROJECT LOCATION  
STATE GAME LAND No. 164  
420 GAME RESERVE ROAD  
FENELTON, PA 16034  
CLEARFIELD TOWNSHIP, BUTLER COUNTY



PROJECT LOCATION PLAN  
NOT TO SCALE



4" SCHEDULE 35 SDR PVC PERFORATED DRAIN LINE EMBEDDED IN CLEAN 2B STONE WITH FILTER CLOTH COVERING. EXTENDED AND DISCHARGE TO GRADE ON STONE RIPRAP AND PROVIDE RODENT SCREEN. APPROX. TOTAL LENGTH OF PIPE 130'



PENNSYLVANIA GAME COMMISSION		
STATE GAME LANDS # 164	CLEARFIELD TWP.	BUTLER COUNTY
NEW 40' x 60' PGC-STORAGE BUILDING		
PAD CONSTRUCTION PLAN & PROFILES		
REVISIONS	PROJECT NO. PGC-164-23-01	
	DRAWN BY: M. SPOTTS	
	DATE: 03/27/2024	
	SHEET NO. 1-1	