

EXISTING RANGE PLAN

Scale: 1 in. = 20 ft.

Note: Green shading represents existing stone surface (AASHTO #10).



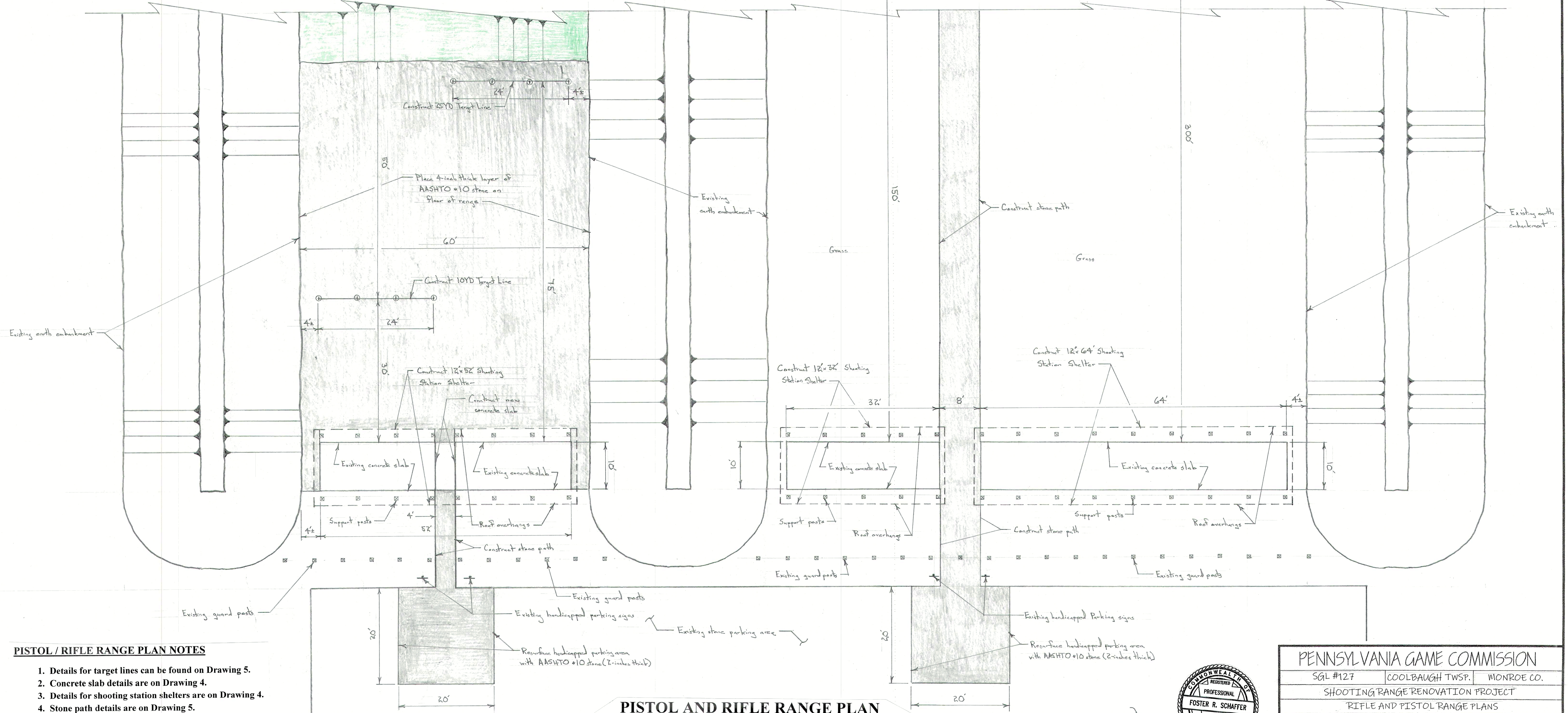
PENNSYLVANIA GAME COMMISSION		
SGR #127	COOLBAUGH TWP.	MONROE CO.
SHOOTING RANGE RENOVATION PROJECT		
RANGE SITE PLAN AND NOTES		
REVISIONS	PROJECT NO.	PGC-127-23-01
▲	DRAWN BY:	JS
▲	DATE:	2/27/23
▲	SHEET NO.	2 OF 5

SCOPE OF WORK – PISTOL RANGE

1. Demolish and remove the concrete and wood shelf units at the shooting line from the existing concrete slabs.
2. Remove the existing steel target uprights (8 total) and concrete foundations from the 10-yard and 25-yard target lines.
3. Fabricate and install new steel target uprights (8 total) and concrete foundations at the 10-yard and 25-yard target lines. Install support spacer plates (12 total) between the new target uprights.
4. Construct the new concrete slab between the existing concrete slabs.
5. Construct the new 52-foot long shooting station shelter.
6. Surface the floor of the pistol range with a 4-inch thick layer of AASHTO #10 stone.
7. Construct the stone path from the shooting station shelter to the handicapped parking area.
8. Resurface the handicapped parking area with a 2-inch thick layer of AASHTO #10 stone.
9. Seed and mulch disturbed areas.
10. Perform final site clean-up.

SCOPE OF WORK – RIFLE RANGE

1. Demolish and remove the concrete shooting tables (12 total) from the existing concrete slabs.
2. Remove the existing steel target uprights (14 total) and concrete foundations from the 50-yard and 100-yard target lines.
3. Fabricate and install new steel target uprights (14 total) and concrete foundations at the 50-yard and 100-yard target lines. Install support spacer plates (24 total) between the new target uprights.
4. Resurface the areas around the new steel target uprights with a 4-inch thick layer of AASHTO #10 stone.
5. Construct the new 64-foot long shooting station shelter over the existing concrete slab at the 100-yard target line.
6. Construct the new 32-foot long shooting station shelter over the existing concrete slab at the 50-yard target line.
7. Install the new shooting tables (12 total) on the 100-yard and 50-yard on the existing concrete slabs in the new shooting station shelters.
8. Construct the stone path from the shooting station shelter to the handicapped parking area.
9. Construct the stone path from the shooting station shelters to the target lines.
10. Resurface the handicapped parking area with a 2-inch thick layer of AASHTO #10 stone.
11. Seed and mulch disturbed areas.
12. Perform final site clean-up.



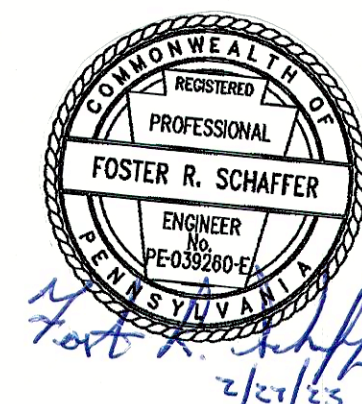
PISTOL / RIFLE RANGE PLAN NOTES

1. Details for target lines can be found on Drawing 5.
2. Concrete slab details are on Drawing 4.
3. Details for shooting station shelters are on Drawing 4.
4. Stone path details are on Drawing 5.
5. Details for the new shooting tables are on Drawing 4.

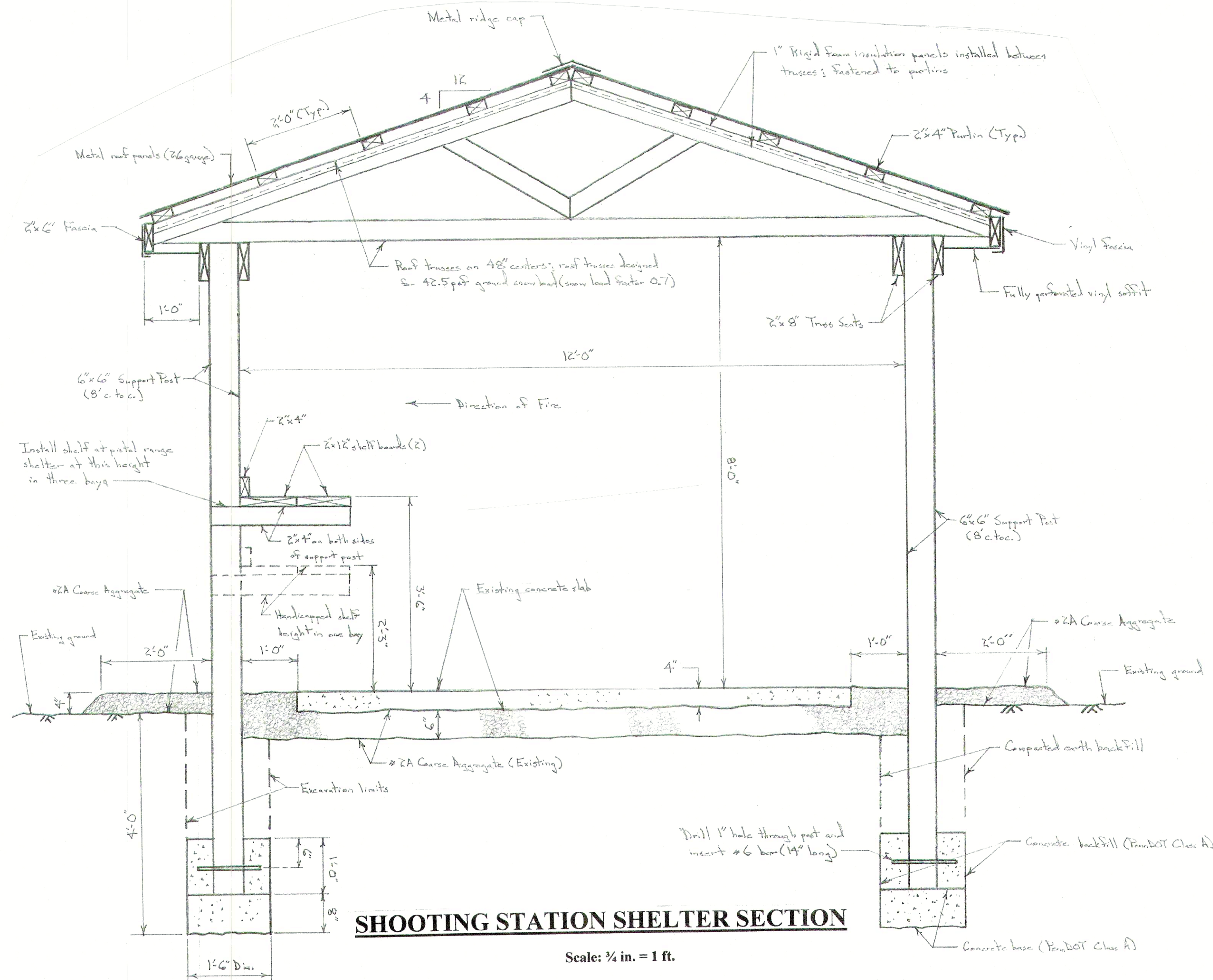
PISTOL AND RIFLE RANGE PLAN

Scale: 1 in. = 10 ft.

Note: Gray shading represents new stone surfacing. Green shading represents existing stone surface on backstop slopes.

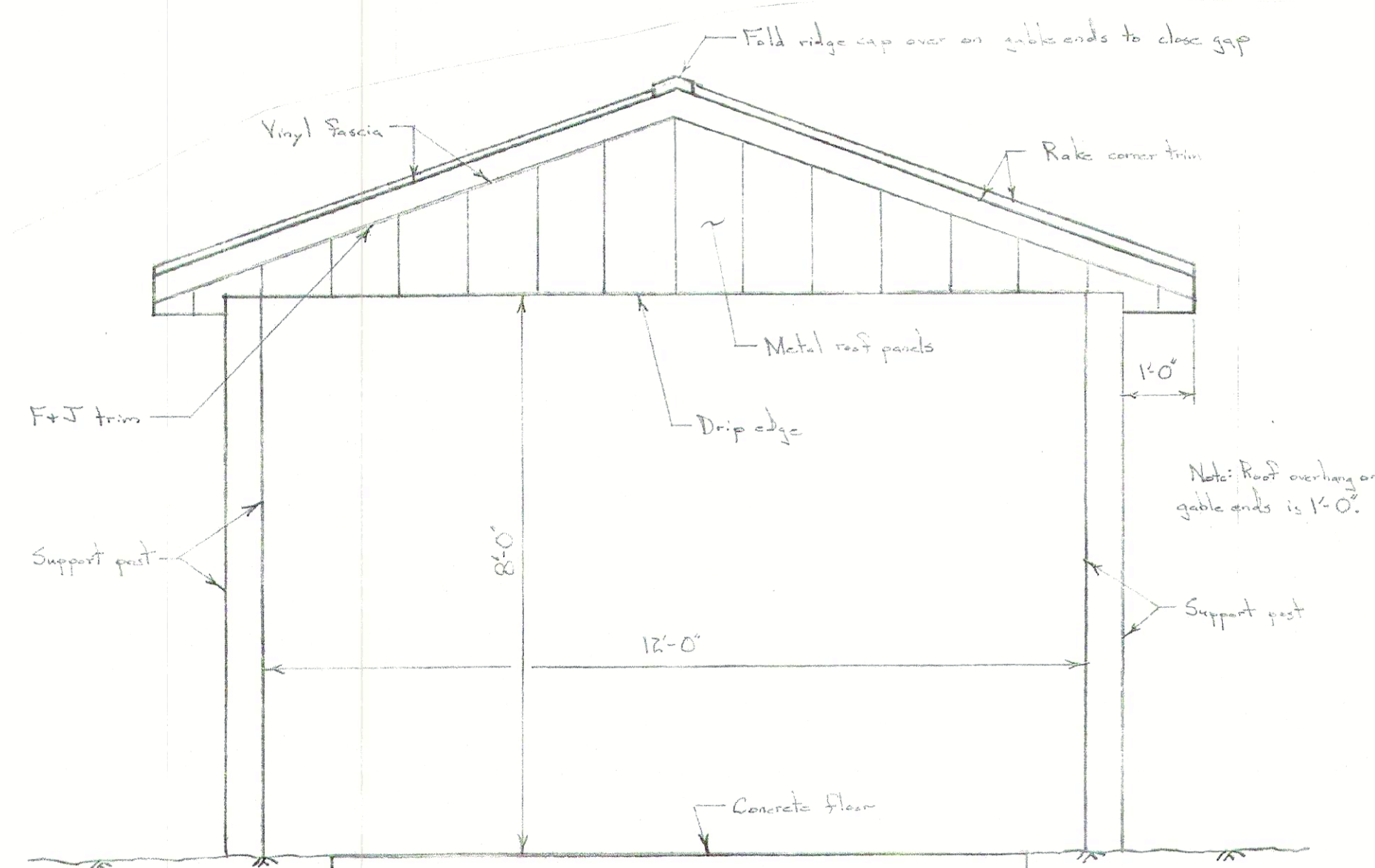


PENNSYLVANIA GAME COMMISSION		
SGL #127	COOLBAUGH TWP.	MONROE CO.
SHOOTING RANGE RENOVATION PROJECT		
RIFLE AND PISTOL RANGE PLANS		
REVISIONS	PROJECT NO.	PGC-127-23-01
▲	DRAWN BY:	JJ
▲	DATE:	2/27/23
▲	SHEET NO.	3 OF 5



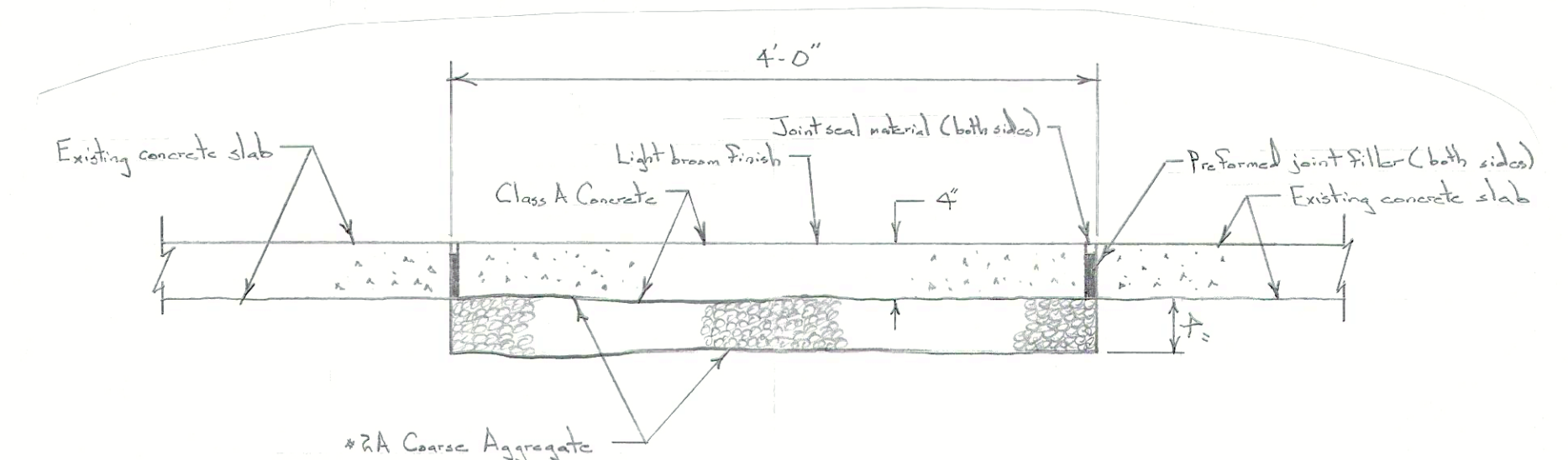
SHOOTING STATION SHELTER SECTION

Scale: 1/4 in. = 1 ft.



SHOOTING STATION SHELTER END ELEVATION

Scale: 1/4 in. = 1 ft.



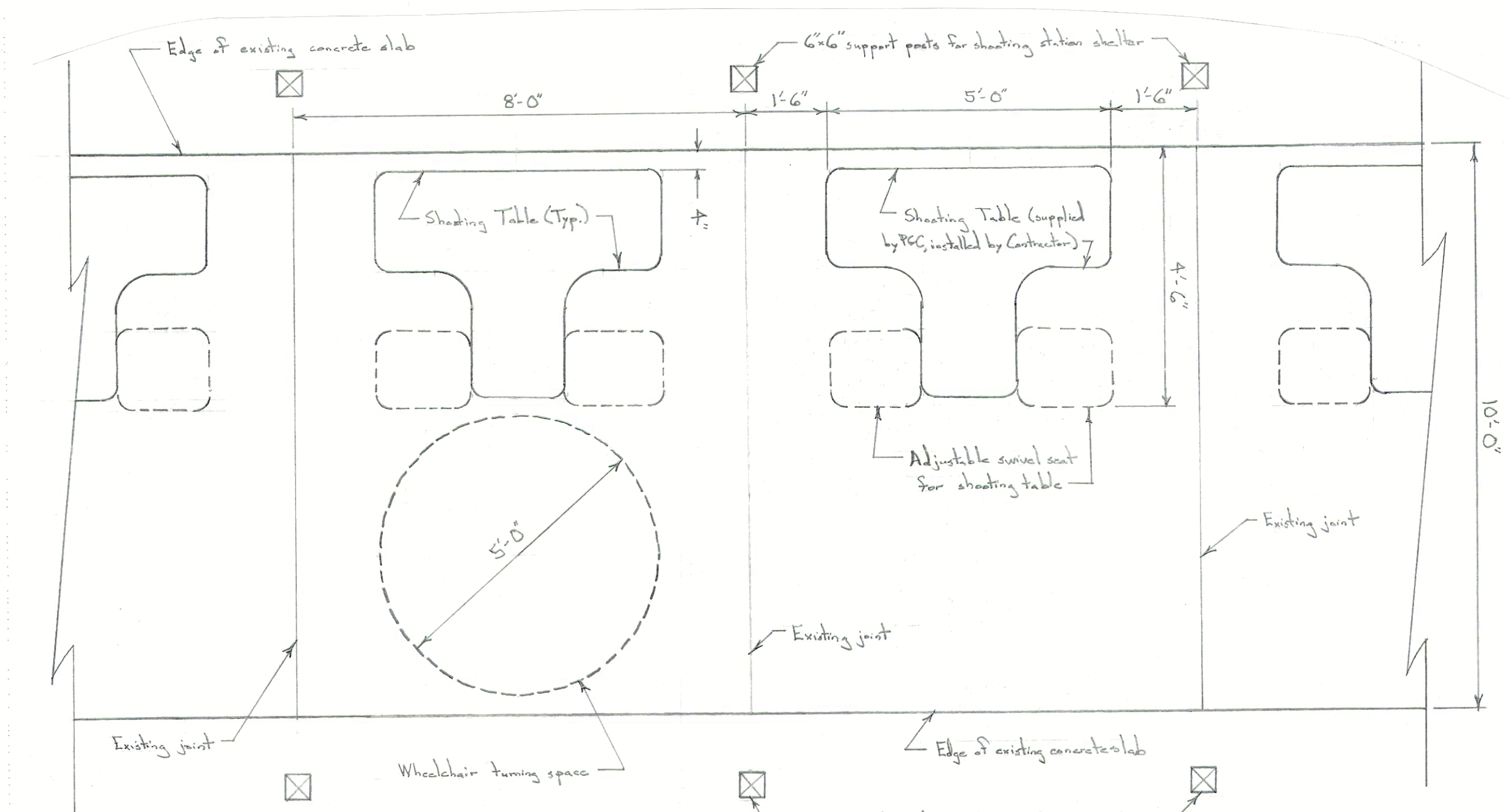
CONCRETE SLAB SECTION

Scale: 1 in. = 1 ft.



PHOTO - SHOOTING TABLE

Note: The PGC will supply the shooting tables (12). The Contractor will install the shooting tables on the existing concrete slab at the rifle range.



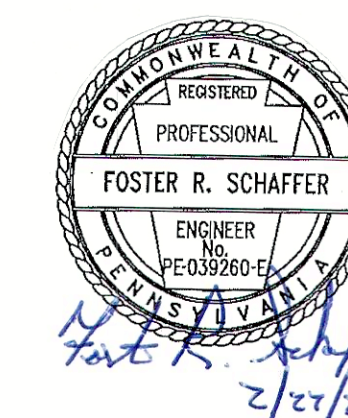
SHOOTING TABLE PLAN

Scale: 1/4 in. = 1 ft.

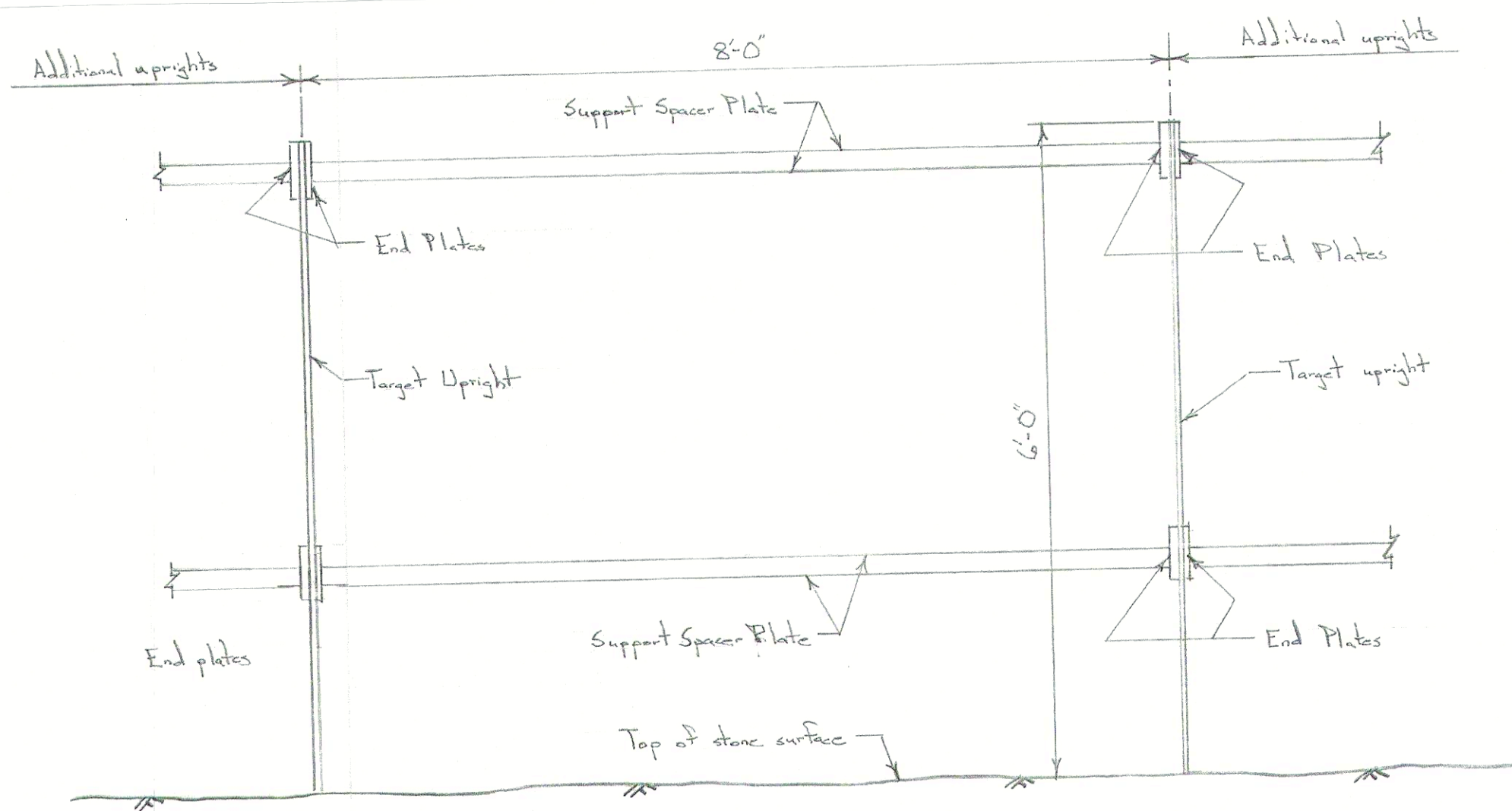
FASTENER SCHEDULE - SHOOTING STATION SHELTERS

Connection	Fasteners
Truss Seats to Posts	Two 1/2" x 10" Carriage Bolts
Trusses to Truss Seats *	Simpson Strong-Tie H1Z Hurricane Tie (Z-Max) with 8d nails
Purlins to Trusses (Top Chord)	Two #10-3" Screws
Fascia to Truss Ends	Two #10-3" Screws

* Trusses can also be connected to the truss seats with 2" x 6" scraps on both sides of the trusses and then set in between the truss seats. Use #10-3" screws for these connections.

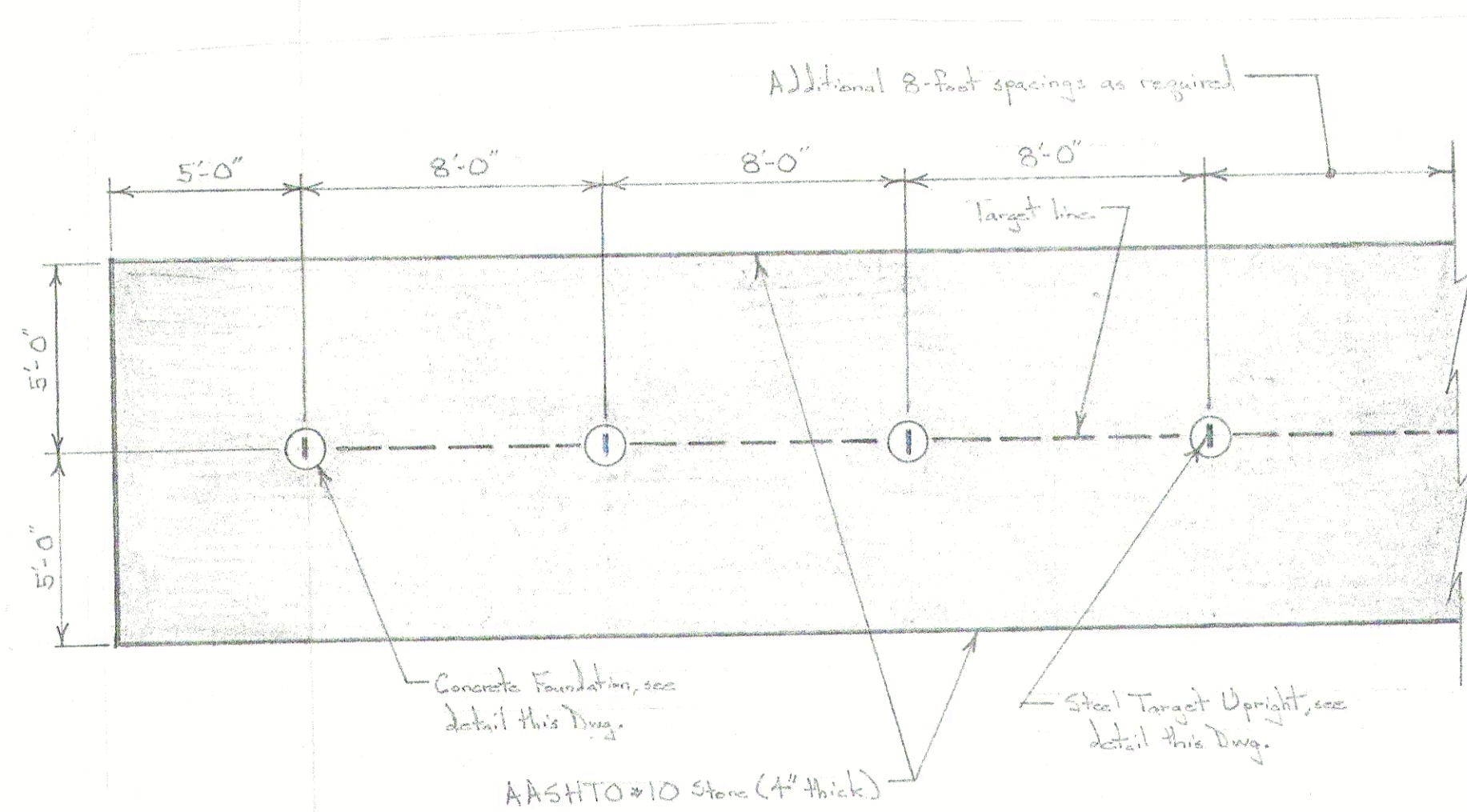


PENNSYLVANIA GAME COMMISSION		
SGL #127	COOLBAUGH TWP.	MONROE CO.
SHOOTING RANGE RENOVATION PROJECT		
SHOOTING STATION SHELTER DETAILS		
REVISIONS	PROJECT NO.	PGC-127-23-01
▲	DRAWN BY:	JS
▲	DATE:	2/27/23
▲	SHEET NO.	4 OF 5



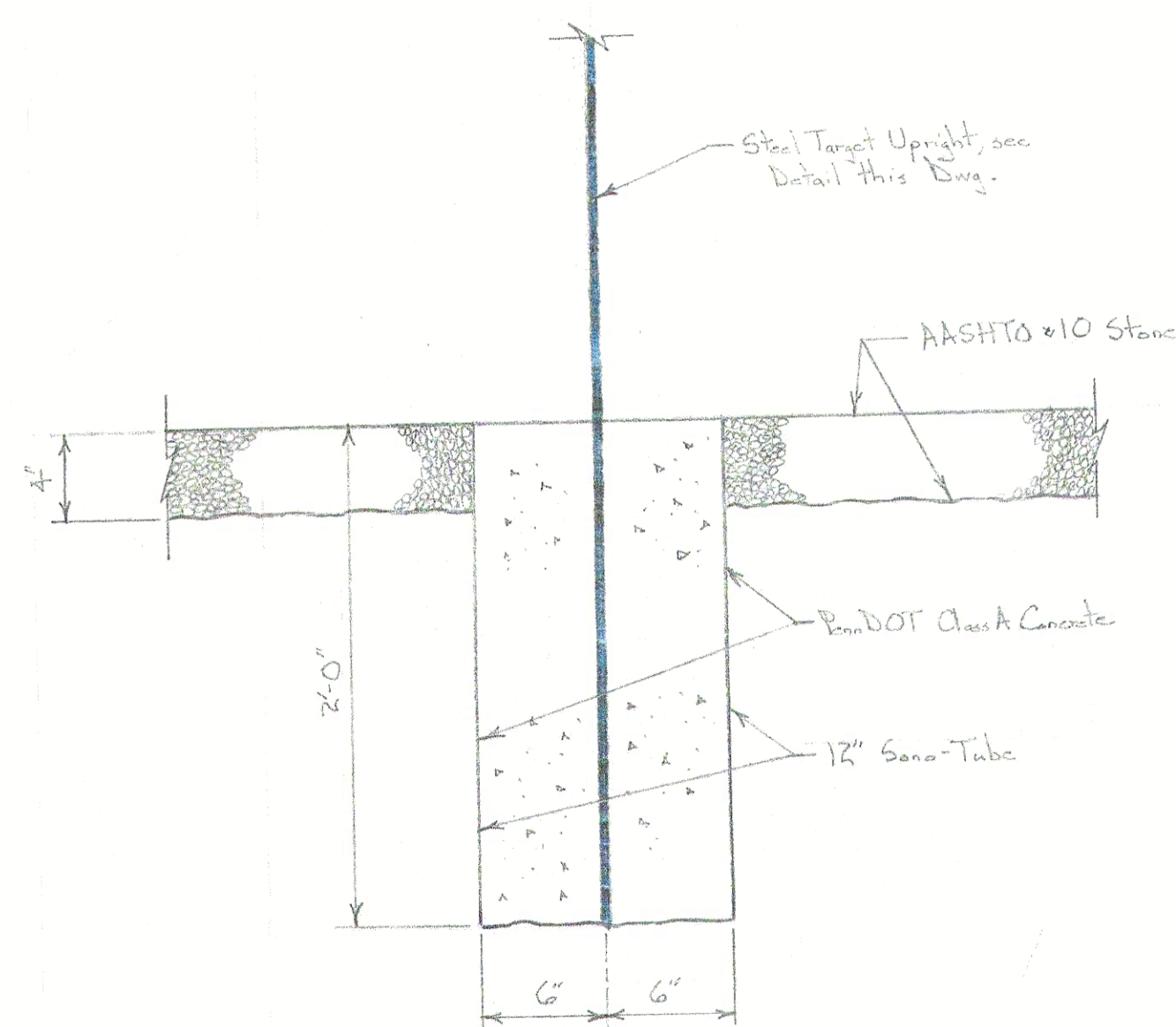
TARGET LINE ELEVATION

Scale: 1/4 in. = 1 ft.



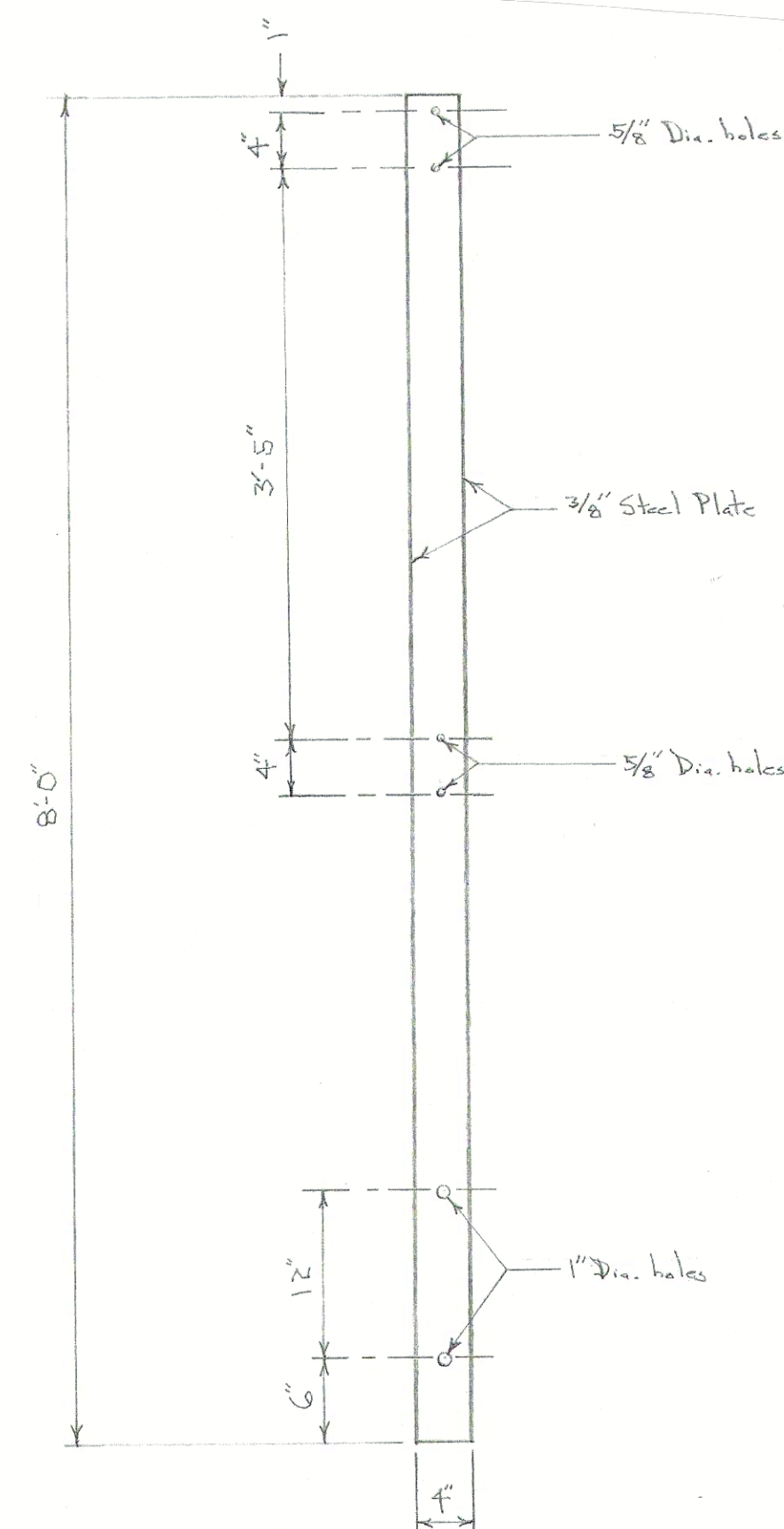
TARGET LINE PLAN

Scale: 1/4 in. = 1 ft.



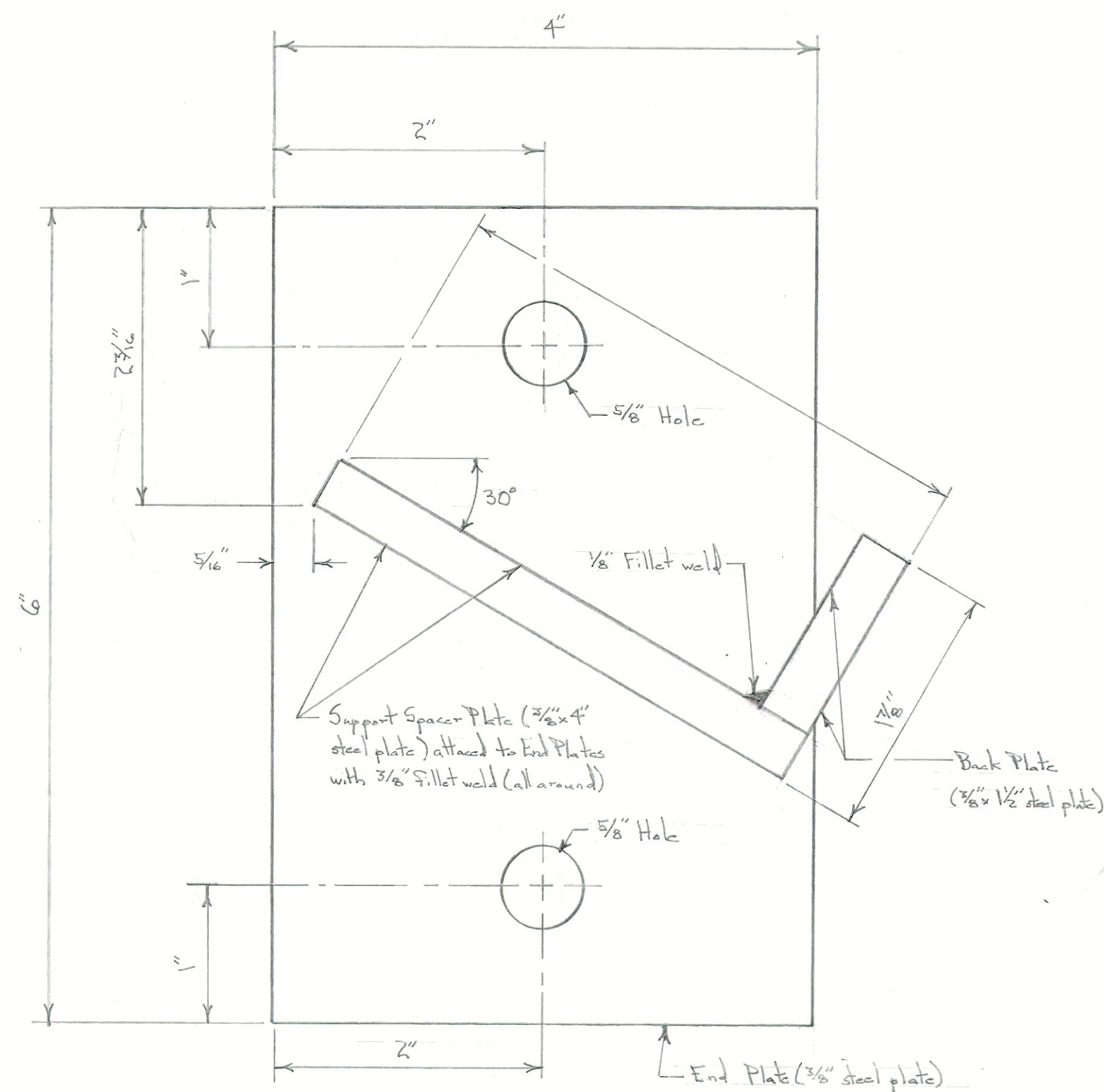
CONCRETE FOUNDATION DETAIL

Scale: 1.5 in. = 1 ft.



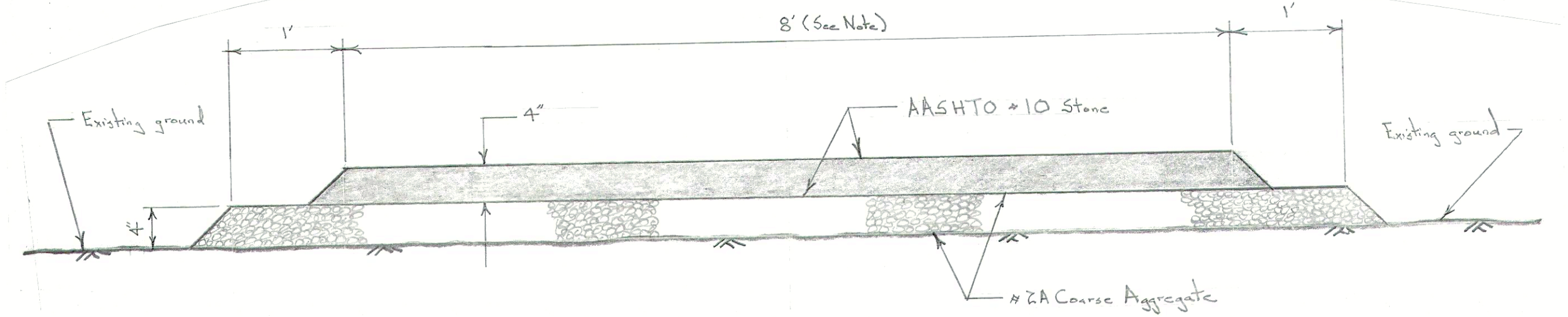
STEEL TARGET UPRIGHT DETAIL

Scale: 1 in. = 1 ft.



END PLATE DETAIL

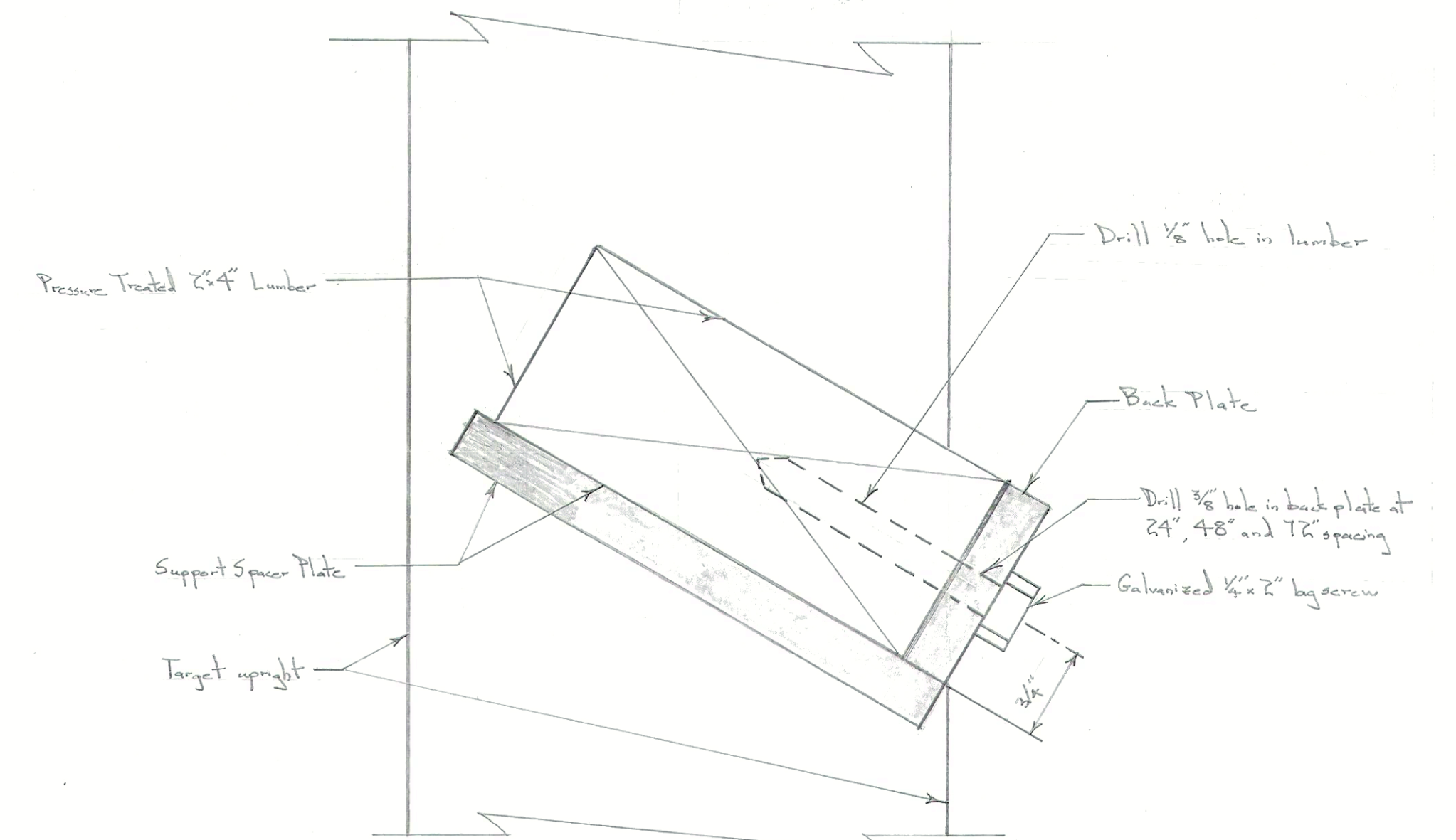
Full Scale



PATH SECTION

Scale: 1 in. = 1 ft.

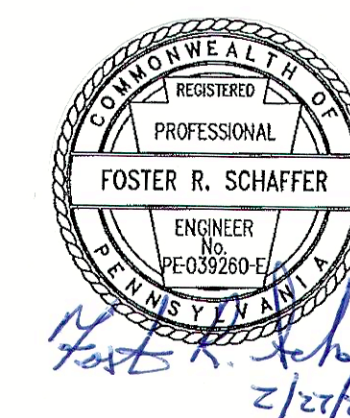
Note: Path section is 4-foot wide at pistol range from shooting station shelter to parking area.



SUPPORT SPACER PLATE DETAIL

Full Scale

Note: Support spacer plate and back plate assembly is 7'-10 7/8" long.



PENNSYLVANIA GAME COMMISSION		
SGL #127	COOLBAUGH TWP.	MONROE CO.
SHOOTING RANGE RENOVATION PROJECT		
TARGET LINE DETAILS		
REVISIONS	PROJECT NO.	PGC-127-23-01
▲	DRAWN BY:	JS
▲	DATE:	2/27/23
▲	SHEET NO.	5 OF 5