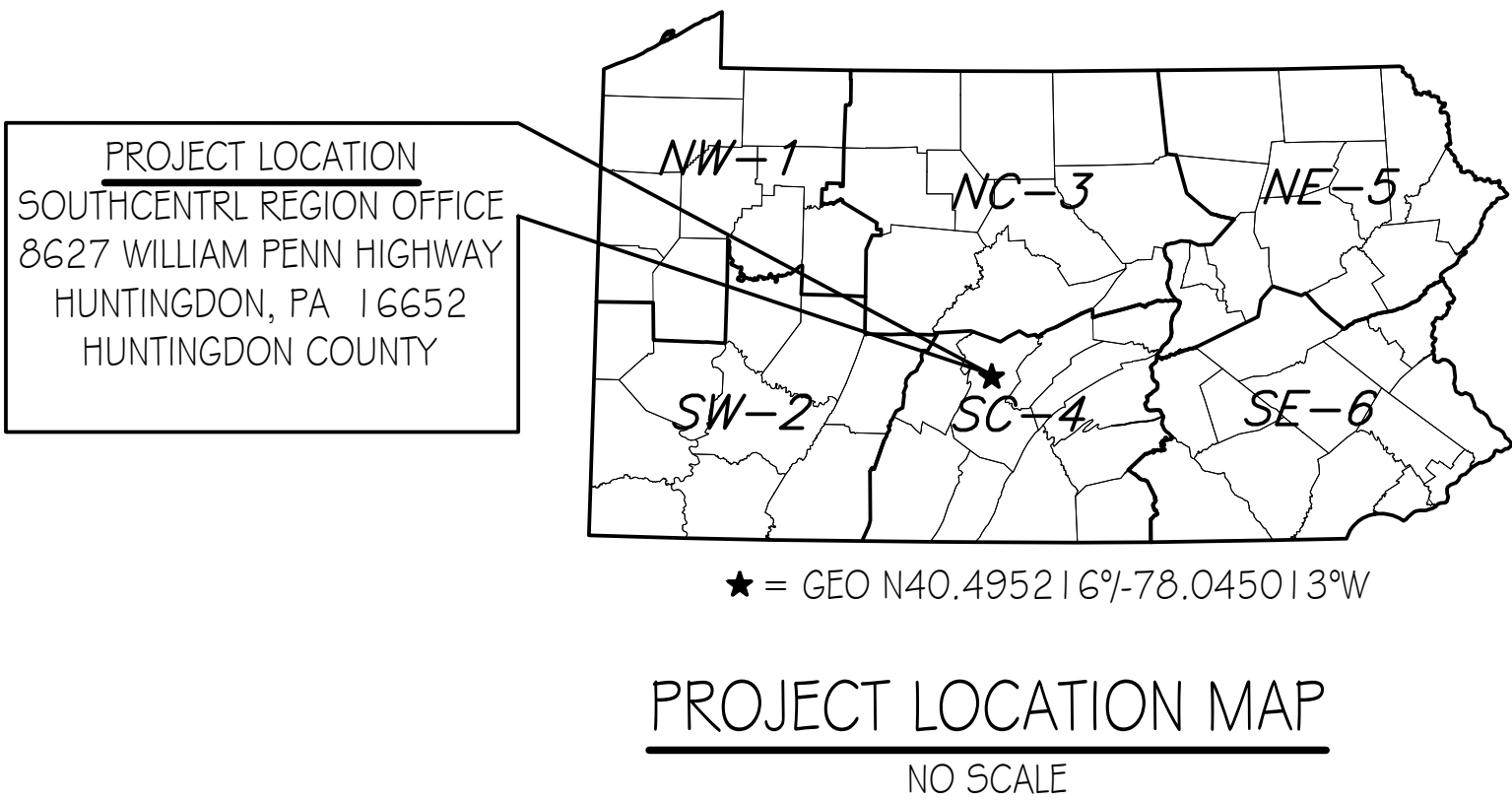


PENNSYLVANIA GAME COMMISSION  
PROJECT NO. PGC-SCRO-23-01  
SOUTHCENTRAL REGIONAL OFFICE  
NEW 40' X 80' STORAGE BUILDING  
SMITHFIELD TOWNSHIP, HUNTINGDON COUNTY, PENNSYLVANIA

CONTRACT NO. 1: GENERAL CONSTRUCTION  
CONTRACT NO. 2: MECHANICAL CONSTRUCTION  
CONTRACT NO. 3: PLUMBING CONSTRUCTION  
CONTRACT NO. 4: ELECTRICAL CONSTRUCTION

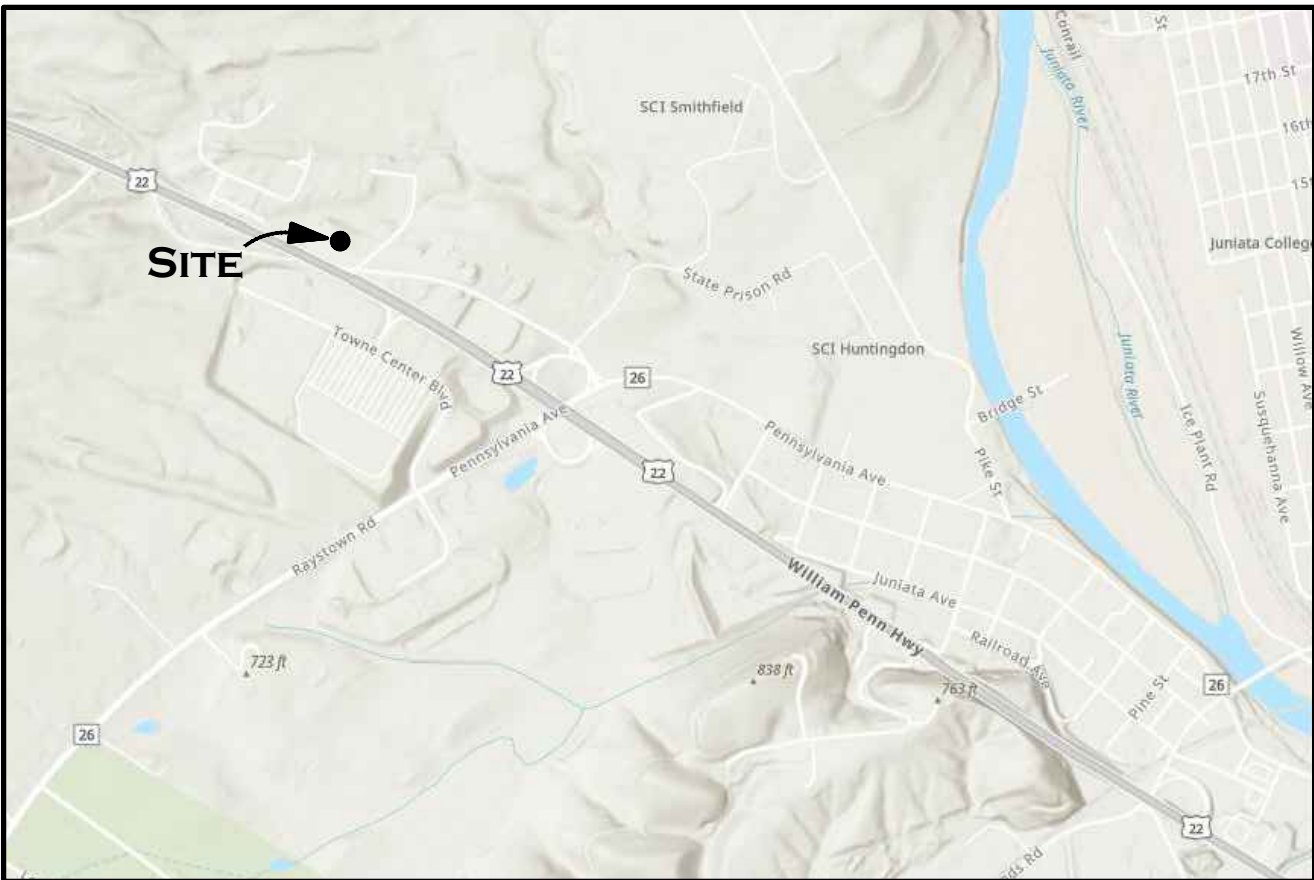
SITE PLAN GENERAL NOTES:

1. UTILITY LINE LOCATIONS SHOWN ON THE DRAWINGS ARE APPROXIMATE. UNDERGROUND TELEPHONE, ELECTRIC, GAS, SANITARY SEWER, WATER AND STORMWATER DRAINAGE LINES MAY BE PRESENT AT SOME WORK LOCATIONS. FIELD VERIFICATION IS REQUIRED PRIOR TO ANY CONSTRUCTION. CONTACT PA ONE CALL AND COMPLY WITH ACT 287 (AS AMENDED) REGARDING LOCATIONS OF UNDERGROUND UTILITIES.
2. ALL WORK WITHIN THE PUBLIC RIGHT-OF-WAY SHALL BE CONDUCTED IN ACCORDANCE WITH THE REQUIREMENTS OF PENNDOT, THE LOCAL MUNICIPALITY AND THE CONTRACT DOCUMENTS.
3. CONTRACTOR SHALL COORDINATE WITH AFFECTED UTILITY COMPANIES IN THE EVENT ITEMS SUCH AS TEMPORARY POLE SUPPORT IS REQUIRED. THIS WORK SHALL BE COMPLETED AT NO ADDITIONAL COST TO THE OWNER.
4. EXISTING DRAINAGE FACILITIES SHALL REMAIN INTACT DURING CONSTRUCTION, UNLESS OTHERWISE DIRECTED BY THE ENGINEER.
5. ALL AREAS DISTURBED BY THE CONSTRUCTION WORK SHALL BE RESTORED IN ACCORDANCE WITH THE CONTRACT DOCUMENTS TO THEIR ORIGINAL CONDITION OR BETTER.
6. ALL DISTURBED AREAS NOT RECEIVING OTHER SURFACE TREATMENT SHALL BE GRADED, SEEDED, AND MULCHED.
7. CONTRACTOR SHALL REFER TO CONTRACT DOCUMENTS FOR SOIL EROSION & SEDIMENTATION CONTROL PLAN REQUIREMENTS.
8. MAINTAIN ACCESS TO DRIVEWAYS AND ENTRANCES LOCATED ALONG THE PROJECT.
9. THE CONTRACTOR SHALL ENSURE THAT ALL CONSTRUCTION VEHICLES (INCLUDING MATERIAL SUPPLIER VEHICLES) LEAVING THE PROJECT AREA HAVE MUD BUILDUP REMOVED FROM THE TIRES BEFORE EXITING ONTO PAVED ROADWAYS. ALL MUD TRACKED ONTO PAVED ROADWAYS SHALL BE IMMEDIATELY REMOVED FROM THE ROADWAY.



BUILDING CODE SUMMARY

Code:	International Building Code, 2018 edition
Scope:	Construction of a new 40' x 80' Storage Building for the Southeast Regional Office in Maidencreek Township, Berks County. The new building shall include accommodations for PGC staff and storage of equipment and material to complete research on wildlife species
Summary:	
Use & Occupancy Group:	304.1 B Building occupied portion for Office 3.11.1 S-1, Building portion used for Storage VB (Table 601)
Construction Type:	3,200 s.f.
New Building Area:	9,000 s.f. (Table 506.2)
Allowable Area:	1 Story, No basement, Allowable Stories: 1 Table 504.4)
Building Stories:	No fire suppression, not required.
Fire Protection:	Units of "A" = 3,200 / 1,500 = 2.13 ~ 3 (Table 906.3(1)) Fire extinguisher shall be provided at each of the two building exits and one at the opposite end of building near OH door.
Fire Extinguishers:	Business, Occupancy Factor = 150 gross 552 S.F./150 = 3.68 ~ 4 persons Storage, Occupancy Factor = 300 gross 2,648 S.F./300 = 8.82 ~ 9 persons 13 x 0.2 inches = 2.6 inches min. (1005.3.2).
Occupant Load:	3 Exits provided = 114 inches; 1 required (Table 1006.3.3(2)) All building features shall be fully ADA compliant in accordance with the 2018 IBC Chapters 11 - Accessibility and ICC A117.1-2017.
Egress Width:	Building to be fully heated and air conditioned. Building envelope, HVAC system and lighting systems shall comply with all International Conservation Code (ICC) applicable provisions.
Means Of Egress:	2018- IPC Chapter 4 Fixtures, Faucets and Fixture Fittings Section 403.2, Separate Facilities (Exceptions 2) - Separate Facilities not required.
Accessibility:	Section 410.2, Drinking Fountains Small Occupancies - Drinking Fountain not required.
Energy Efficiency:	
Plumbing Fixture(s):	



PROJECT VICINITY MAP  
NOT TO SCALE

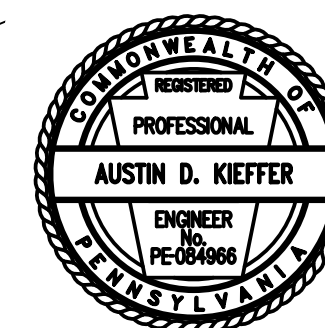
DRAWING INDEX

CS-1	COVER SHEET
SP-1	EXISTING BUILDING SITE PLAN
SP-2	BUILDING SITE PLAN & DETAILS
A-1	BUILDING FLOOR PLAN & DETAILS
A-2	ELEVATIONS, SECTIONS, SCHEDULES & REFLECTED CEILING PLAN
A-3	WALL SECTION & DETAILS
A-4	WALL SECTION & DETAILS
A-5	ENLARGED PLAN & ELEVATIONS
P-1	PLUMBING FLOOR PLAN, ELEVATIONS & DETAILS
M-1	MECHANICAL FLOOR PLAN & DETAILS
E-1	ELECTRICAL FLOOR PLAN, SCHEDULES & DETAILS



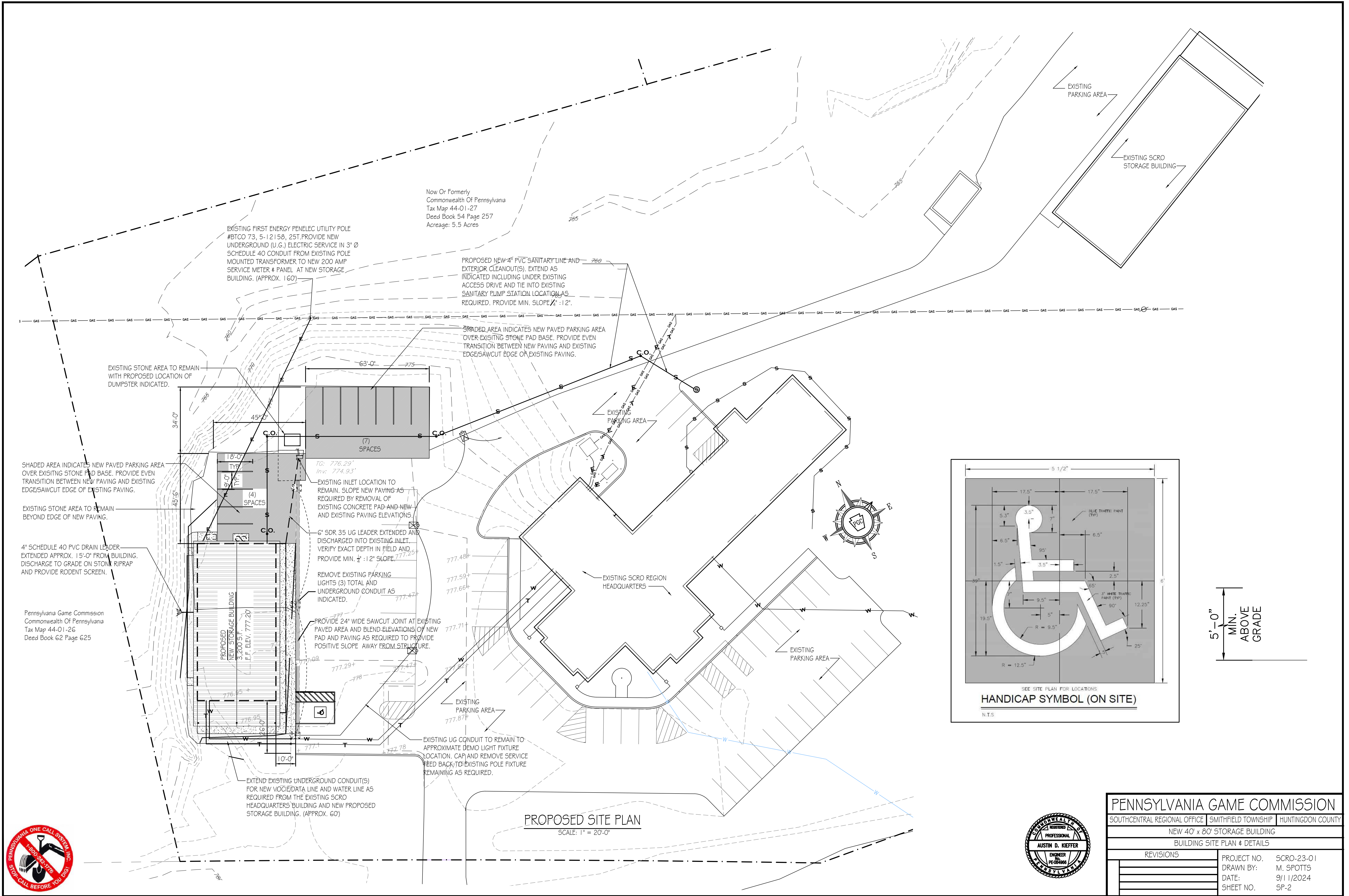
PENNSYLVANIA GAME COMMISSION		
SOUTHCENTRAL REGIONAL OFFICE	SMITHFIELD TOWNSHIP	HUNTINGDON COUNTY
NEW 40' x 80' STORAGE BUILDING		
COVER SHEET		
REVISIONS	PROJECT NO.	SCRO-23-01
	DRAWN BY:	M. SPOTTIS
	DATE:	9/11/2024
	SHEET NO.	CS-1



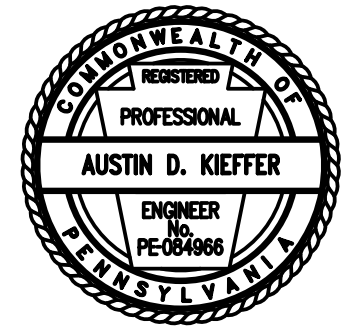


PENNSYLVANIA GAME COMMISSION		
SOUTHCENTRAL REGIONAL OFFICE	SMITHFIELD TOWNSHIP	HUNTINGDON COUNTY
NEW 40' x 80' STORAGE BUILDING		
EXISTING BUILDING SITE PLAN		
REVISIONS		PROJECT NO. SCRO-23-01
		DRAWN BY: M. SPOTTS
		DATE: 9/11/2024
		SHEET NO. SP-1



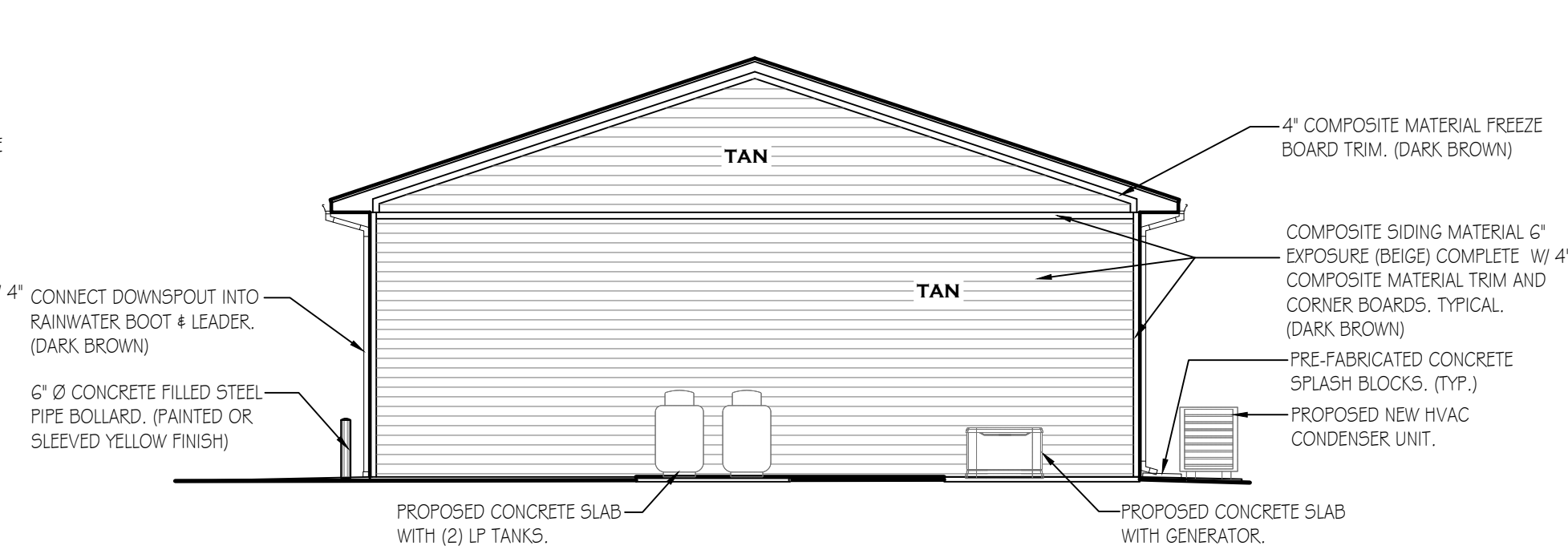




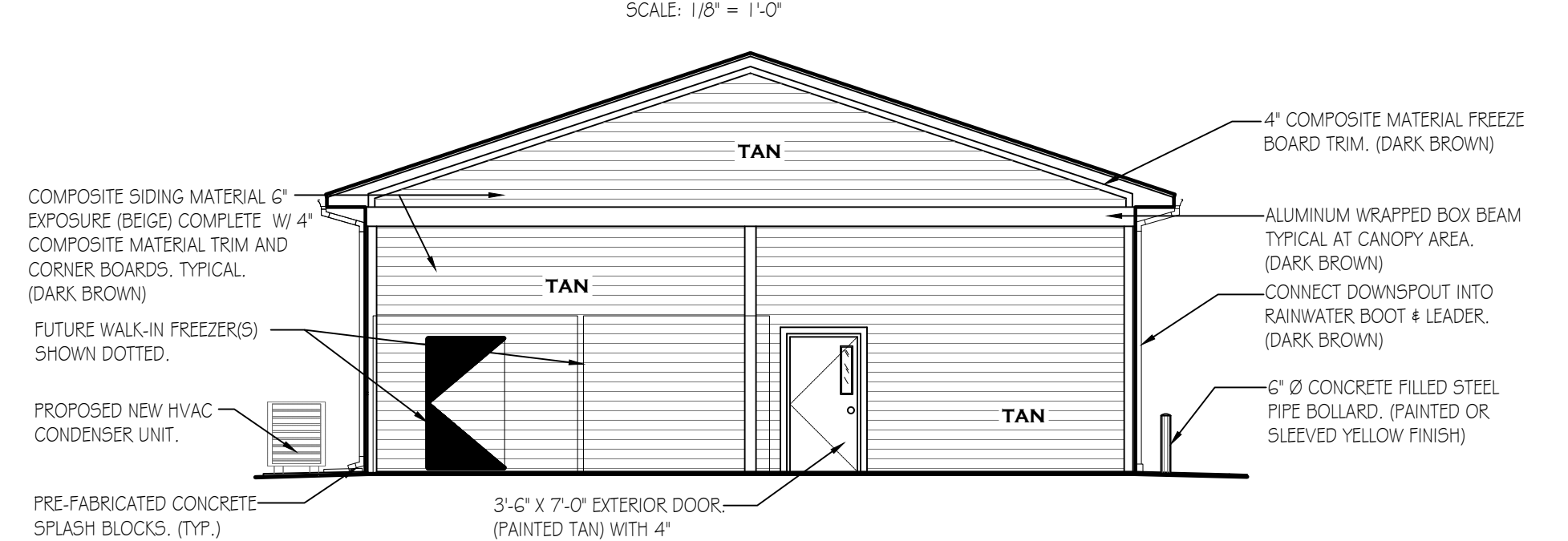


PENNSYLVANIA GAME COMMISSION		
SOUTHCENTRAL REGIONAL OFFICE	SMITHFIELD TOWNSHIP	HUNTINGDON COUNTY
NEW 40' x 80' STORAGE BUILDING		
BUILDING FLOOR PLAN		
<div style="border: 1px solid black; padding: 5px; margin-bottom: 5px;">REVISIONS</div> <div style="border: 1px solid black; height: 100px; width: 100%;"></div>	PROJECT NO.	SCRO-23-01
	DRAWN BY:	M. SPOTTS
	DATE:	9/11/2024
	SHEET NO.	A-1

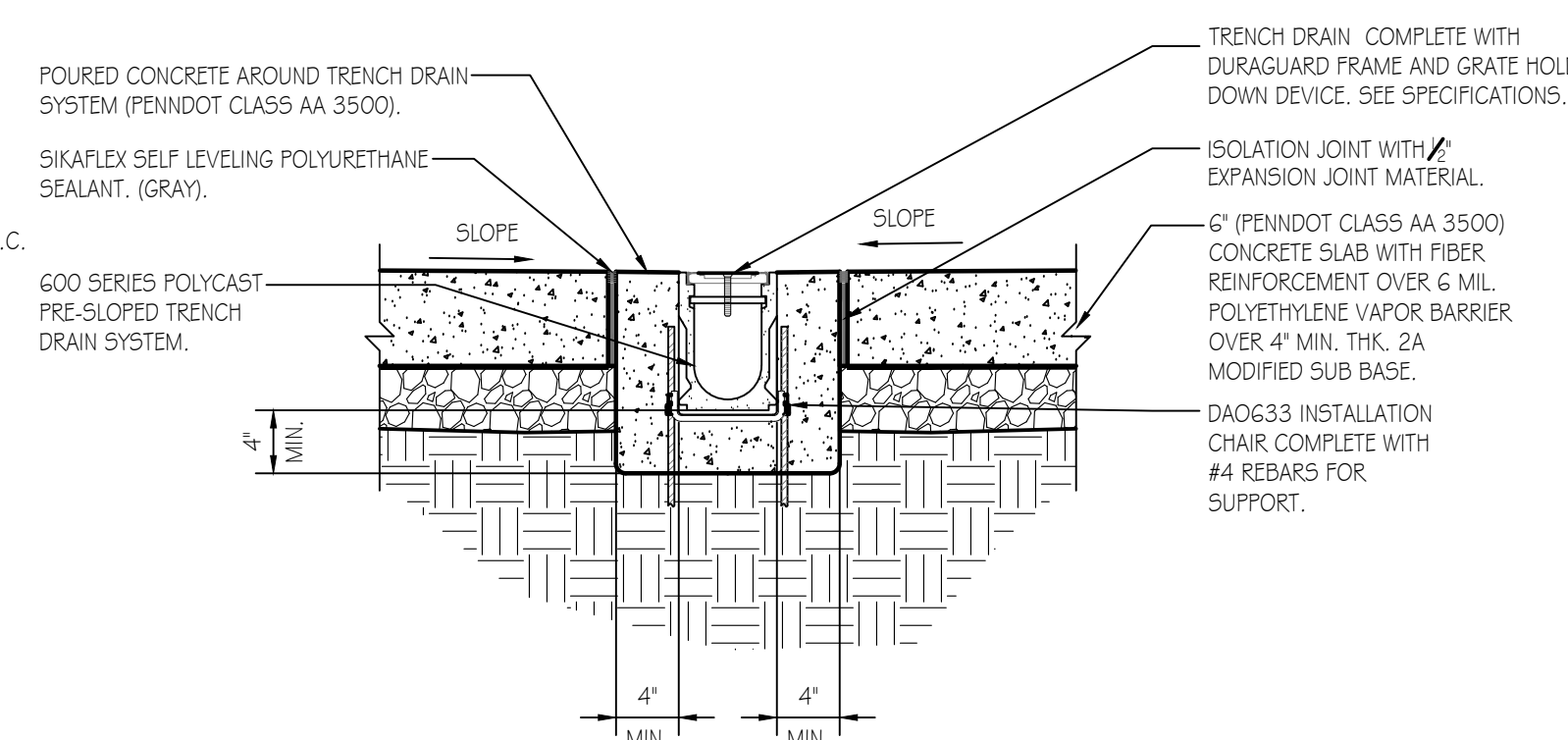




LEFT ELEVATION

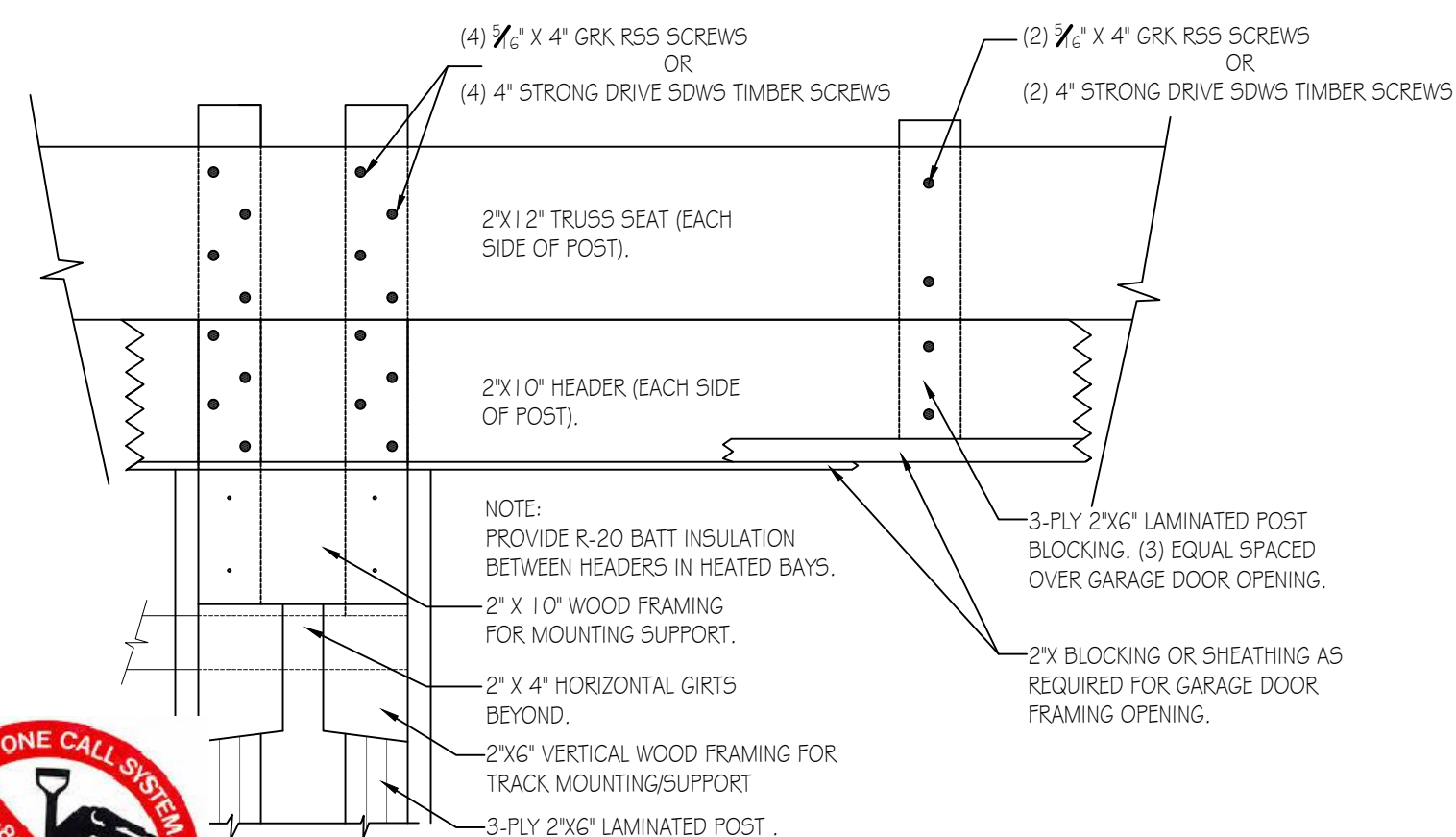


RIGHT ELEVATION



6'-0" OVERHEAD AIRSPACE FOR CHIMES AND GABLE VENT  
 12'  
 POST 3-PLY LAMINATED 2"x6"x20'-0"  
 POST 3-PLY LAMINATED 2"x6"x18'-0"  
 SPREAD WEB TRUSS DESIGN FOR 8' ENERGY HEEL. TRUSSES DESIGNATED FOR 42.5LB/5'F. GROUND SNOW LOAD (SNOW LOAD FACTOR: 7) SPACED @ 4'-0" O.C.  
 POST 3-PLY LAMINATED 2"x6"x16'-0" (TYPICAL).  
 2"x4" HORIZONTAL GIRTS TYPICAL AT ALL LOCATIONS UNLESS DETAILED.  
 2"x6" HORIZONTAL GIRT (FRONT ELEVATION ONLY) FOR TRANSITION BETWEEN STONE VENEER AND COMPOSITE SIDING.  
 FRAME STRUCTURE DESIGNED FOR 25LB/5'F WIND LOAD.  
 PERMA COLUMN PRECAST CONCRETE COLUMN  
 5'-0" HEIGHT  
 MAX. WIND UP TO 60 MPH  
 100% WIND UPLIFT FOR ROOFING

REFLECTED CEILING PLAN



MARK	TYPE	WIDTH	HGT.	THK.	HAND	QTY.	REMARKS
A <sup>1</sup>	3	3'-0"	7'-0"	1-3/4"	LHR	2	INSULATED CORE W/ INSUL GLASS, PANIC EXIT DEVICE, CLOSER
A <sup>2</sup>	1	3'-6"	7'-0"	1-3/4"	RHR	1	INSULATED CORE W/ INSUL GLASS, PANIC EXIT DEVICE, CLOSER
B	1	3'-6"	7'-0"	1-3/4"	RH	1	NON-INSULATED W/ TEMP GLASS & PASSAGE SET
C	2	3'-0"	7'-0"	1-3/4"	RH	1	NON-INSULATED W/ PRIVACY SET
D	1	3'-0"	7'-0"	1-3/4"	RH	2	INSULATED CORE W/ INSUL GLASS, PANIC EXIT DEVICE, CLOSER
E <sup>1</sup>	4	3'-0"	7'-0"	1-3/4"	LHR	1	NON-INSULATED W/ TEMP GLASS, VENT & PASSAGE SET
E <sup>2</sup>	4	3'-0"	7'-0"	1-3/4"	RHR	1	NON-INSULATED W/ TEMP GLASS, VENT & PASSAGE SET
F	O.H.	12'-0"	12'-0"	SEE SPECIFICATIONS		3	INSULATED SECTIONAL OVERHEAD DOOR
F	O.H.	14'-0"	12'-0"	SEE SPECIFICATIONS		1	INSULATED SECTIONAL OVERHEAD DOOR

TYPE 1

TYPE 2

TYPE 3

TYPE 4

MARK	TYPE	MANUFACTURER	ROUGH OPENING	COLOR	QTY.	REMARKS
A	I	VINYL	2'-6" x 3'-0"	DARK BROWN/BRONZE	3	SEE NOTE #4 BELOW FOR SAFETY GLAZING


**WINDOW SCHEDULE NOTES:**

1)ALL WINDOWS TO BE COMPLETE WITH CLEAR LOW E GLASS W/ ARGON AND INSECT SCREENS.

2)EXTERIOR WINDOW COLOR DARK BROWN/BRONZE AND INTERIOR WINDOW COLOR TO BE WHITE.

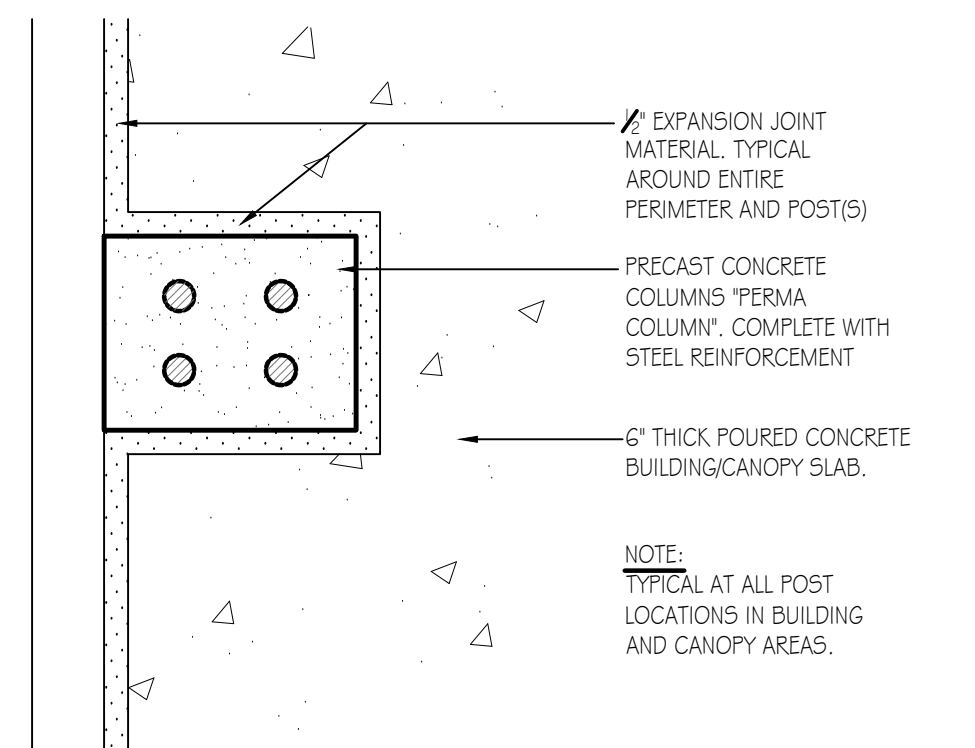
3)SEE SPECIFICATIONS FOR ADDITIONAL WINDOW INFORMATION.

4) WINDOW ADJACENT TO THE OFFICE/BREAK EXTERIOR DOOR LEADING TO THE FRONT OF THE BUILDING TO HAVE SAFETY GLAZING IN ACCORDANCE WITH 2018 IBC, SECTION 2406.4.2. (GLAZING ADJACENT TO DOORS.)



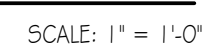
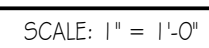
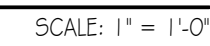
TYPE I

N.T.S.

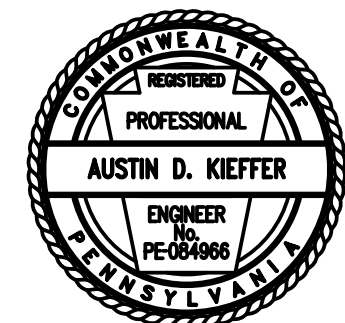
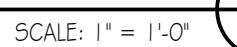


SCALE: 3" = 1'-0"





TRUSS DRAWING IS DEFERRED.	
NOTE: DESIGN LOADING (PSF)	
TCLL	30
SNOW	29.75/42
TCDL	5.0
BCLL	0.0
BCDL	10.0
SPACING	4-0-0



DATE: 9/11/2024  
SHEET NO. A-3



PENNSYLVANIA GAME COMMISSION		
SOUTHCENTRAL REGIONAL OFFICE		SMITHFIELD TOWNSHIP
		HUNTINGDON COUNTY
NEW 40' x 80' STORAGE BUILDING		
WALL SECTION & DETAILS		
REVISIONS		PROJECT NO. SCRO-23-01
		DRAWN BY: M. SPOTT5
		DATE: 9/11/2024
		SHEET NO. A-4



BATH ROOM FIXTURES,  
ACCESSORIES, AND CLEARANCES

- 1 NEW HANDICAP ACCESSIBLE ELONGATED TOILET FLOOR MOUNTED WITH OPEN-FRONT SEAT AND MANUAL FLUSH VALVE.
- 2 NEW SINGLE ROLL TOILET PAPER DISPENSER .
- 3 PROVIDE (3) SATIN 5.5. GRAB BARS W/ CONCEALED FLANGE. (1) @ 1'8", (1) @ 3'6", (1) @ 4'2".
- 4 PROVIDE WALL HUNG ADA COMPLIANT SINK AND FAUCET AS SPECIFIED MOUNTED AT 34" MAXIMUM A.F.F. TO TOP OF BOWL.
- 5 1'8"x3'8" POISHED PLATE MIRROR W/ POLISHED EDGES ADHERED TO WALL W/ BOTTOM OF REFLECTIVE SURFACE 40" A.F.F. MAX.
- 6 60" WIDE x 56" LONG CLEAR FLOOR SPACE FOR FLOOR MOUNTED WATER CLOSET IN ACCORDANCE W/ ICC/ANSI A117.1-2017 SECTIONS 604.3.1 AND 604.3.2
- 7 30" WIDE x 52" LONG, FORWARD APPROACH, CLEAR FLOOR SPACE FOR LAVATORY IN ACCORDANCE W/ ICC/ANSI A117.1-2017 SECTION 606.2
- 8 67" DIAMETER WHEELCHAIR TURNING SPACE IN ACCORDANCE W/ ICC/ANSI A117.1-2017 SECTION 304.3.1.1
- 9 30" WIDE x 52" LONG CLEAR FLOOR OR GROUND SPACE PAST DOOR SWING IN ACCORDANCE WITH 1 CC/ANSI A117.1-2017, SECTION 603.2 AND 603.2.2.
- 10 MANEUVERING CLEARANCE AT DOOR (LATCH APPROACH-PULL SIDE) IN ACCORDANCE W/ 1 CC/ANSI A117.1-2017 404.2.3.2 (FIGURE A)
- 11 APPROXIMATE LOCATION OF RESTROOM SIGNAGE MOUNTING HEIGHT TO BE BETWEEN 48"-60". IN ACCORDANCE WITH ICC/ANSI A117.1-2017, CHAPTER 7.
- 12 APPROXIMATE LOCATION OF PAPER TOWEL DISPENSAR WITH MAXIMUM 4" PROTRUSION. COORDINATE EXACT LOCATION IN FIELD WITH OWNER. HEIGHT OF TOWEL DISPENSAR SLOT TO BE 48" MAXIMUM ABOVE FINISHED FLOOR FOR A SIDE REACH APPROACH.

RESEARCH/WORK AREA/STORAGE CABINETRY  
AND APPLIANCE CLEARANCES

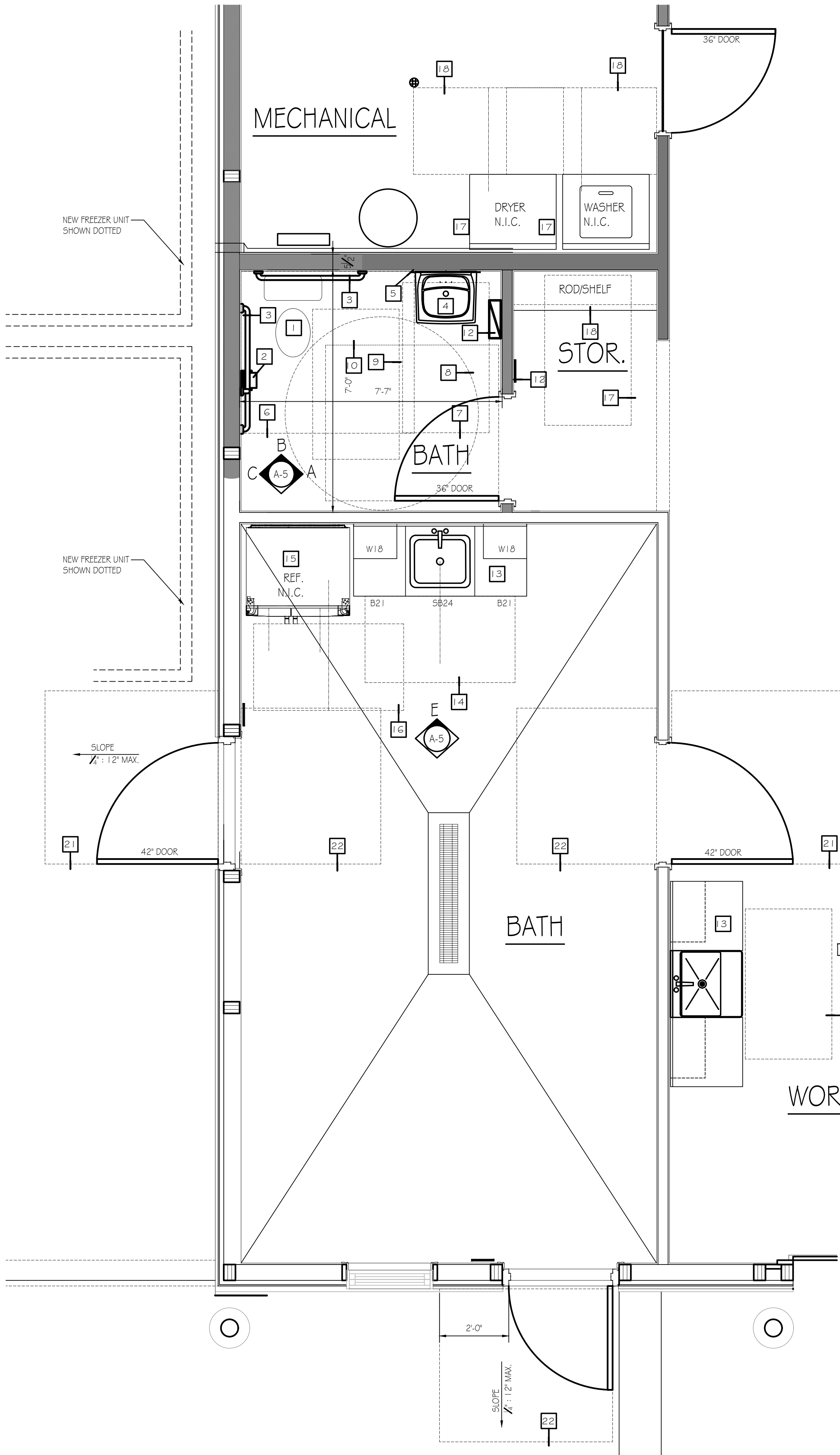
- 13 CABINETRY AND COUNTERTOP COMPLETE WITH SINK WITH A MAXIMUM HEIGHT ABOVE THE FLOOR OF 34" MEASURED TO THE RIM OF THE SINK OR COUNTERTOP(WHICHEVER IS THE HIGHEST) IN ACCORDANCE W/ ICC/ANSI A117.1-2017 SECTION 606 AND 606.3.
- 14 30" WIDE x 52" LONG, ACCESS FOR A SIDE APPROACH TO THE SINK, IN ACCORDANCE W/ ICC/ANSI A117.1-2017 SECTION 606.2 EXCEPTION 1 AND FIGURE C804.2.3(b).
- 15 REFRIGERATOR/FREEZER BY OWNER IN ACCORDANCE W/ ICC/ANSI A117.1-2017 SECTION 804.5.6.
- 16 30" WIDE x 52" LONG, ACCESS TO SIDE-BY-SIDE REFRIGERATOR/FREEZER IN ACCORDANCE W/ ICC/ANSI A117.1-2017 SECTION 605 AND FIGURE C804.5.6 (c)
- 17 30" WIDE x 52" LONG CLEAR UNOBSTRUCTED FLOOR SPACE FOR FORWARD APPROACH TO BUILT IN ROD/SHELF, IN ACCORDANCE W/ ICC/ANSI A117.1-2017 SECTION 305.3.1 AND FIGURE 305.3.1.
- 18 BUILT IN ROD/SHELF TO BE 48" MAXIMUM A.F.F. TO COMPLY WITH UNOBSTRUCTED SIDE REACH, IN ACCORDANCE W/ ICC/ANSI A117.1-2017 SECTION 305.2.1 AND FIGURE 305.2.1.

WASHING/DRYER MACHINE CLEARANCES

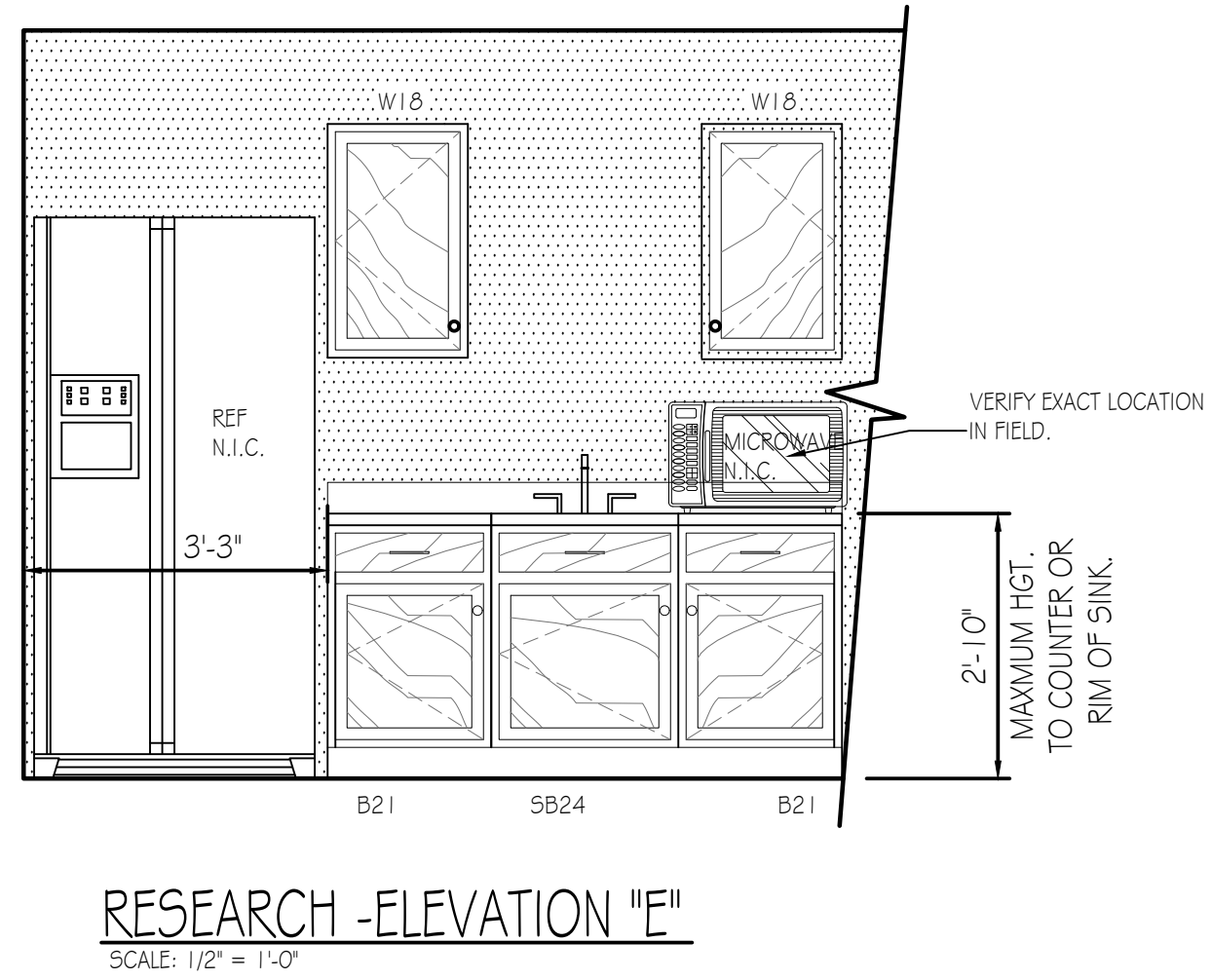
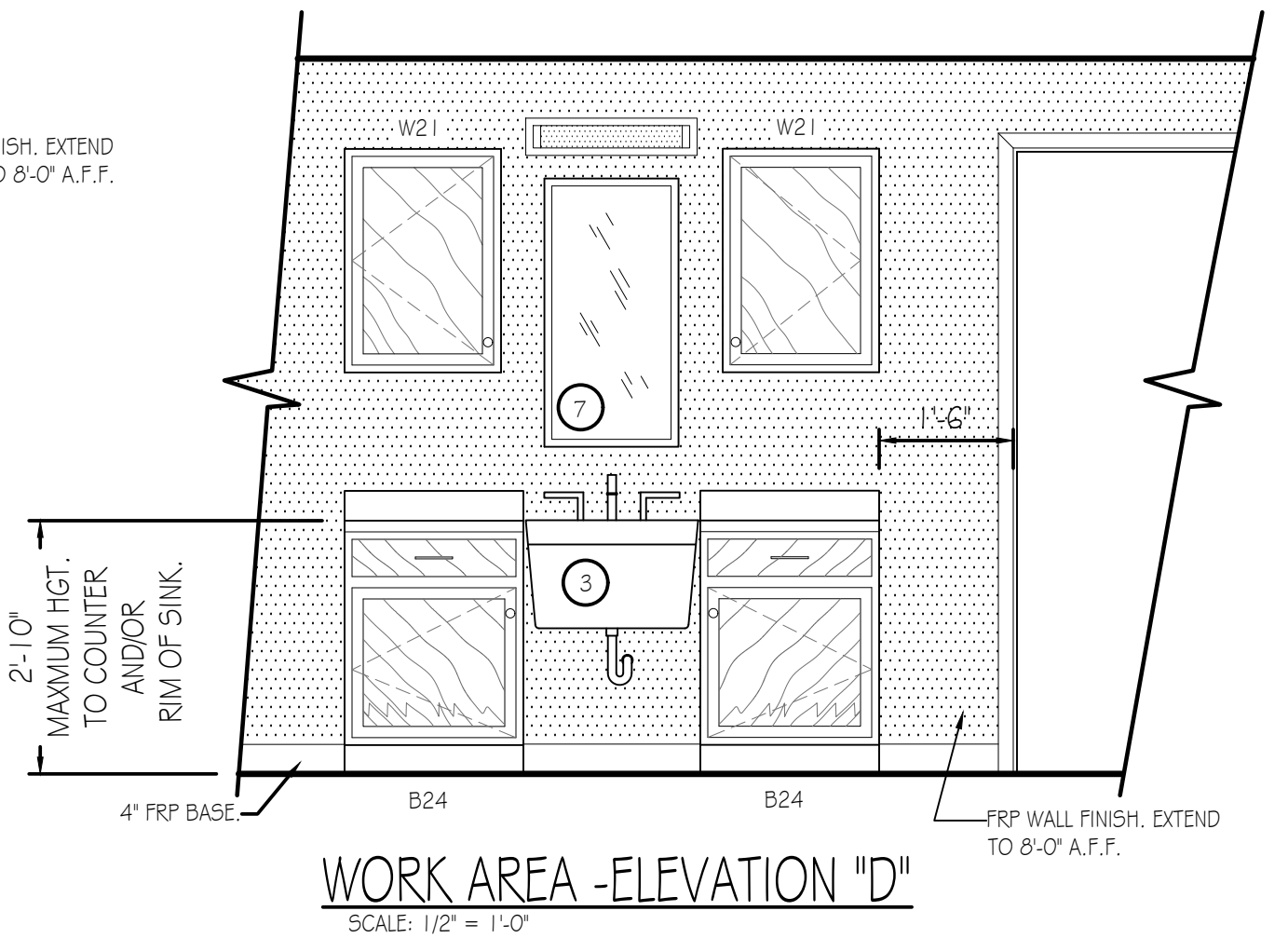
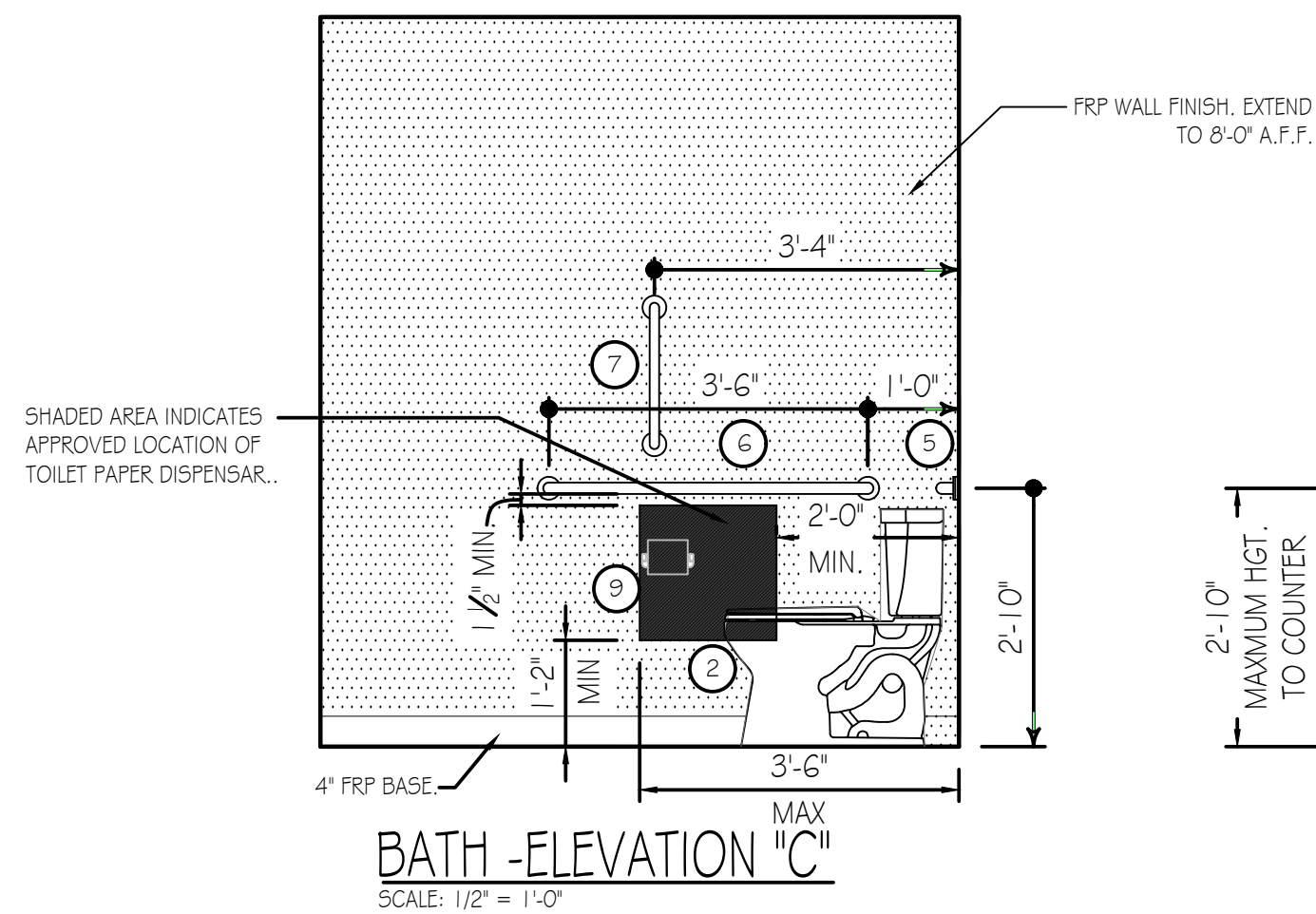
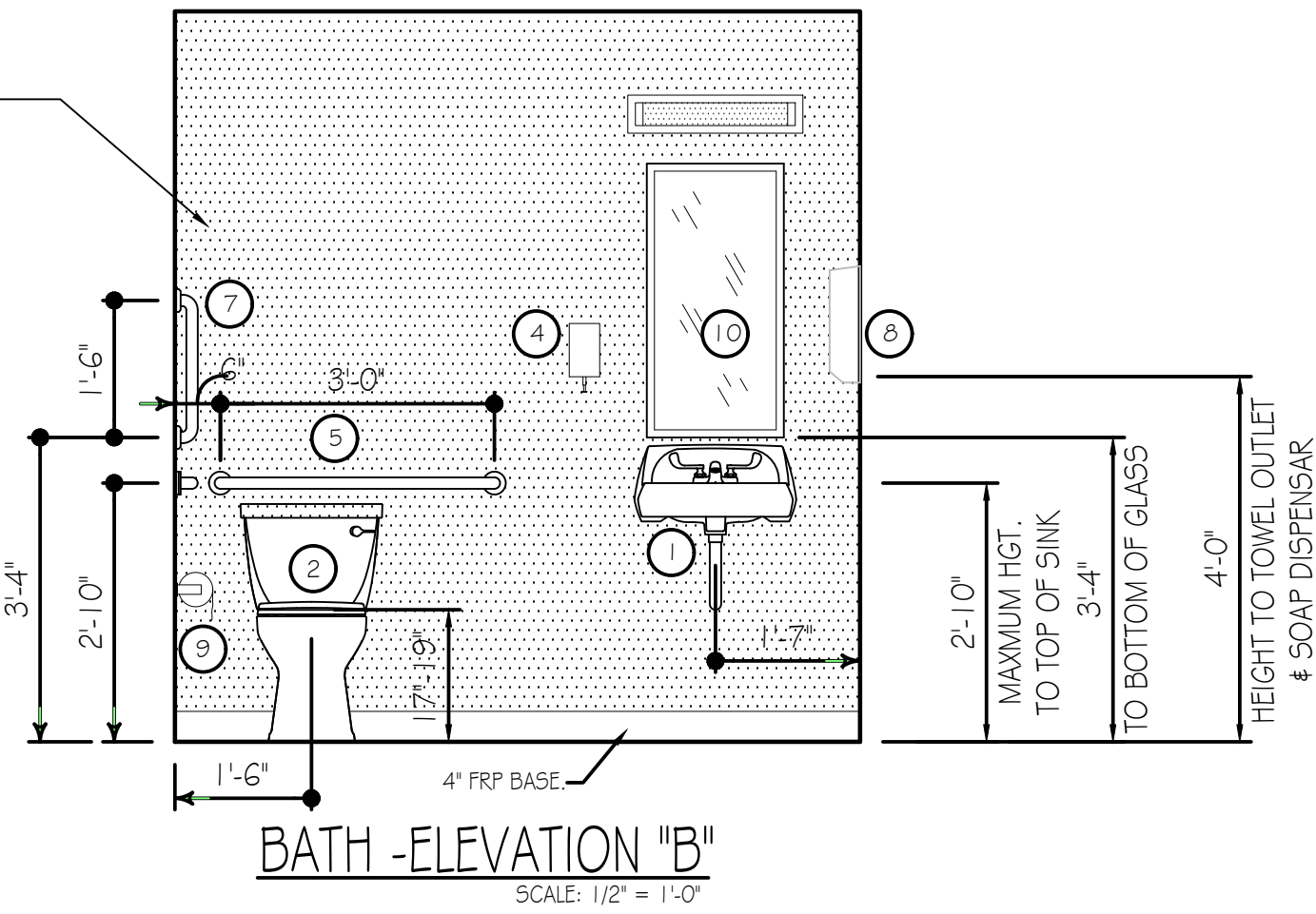
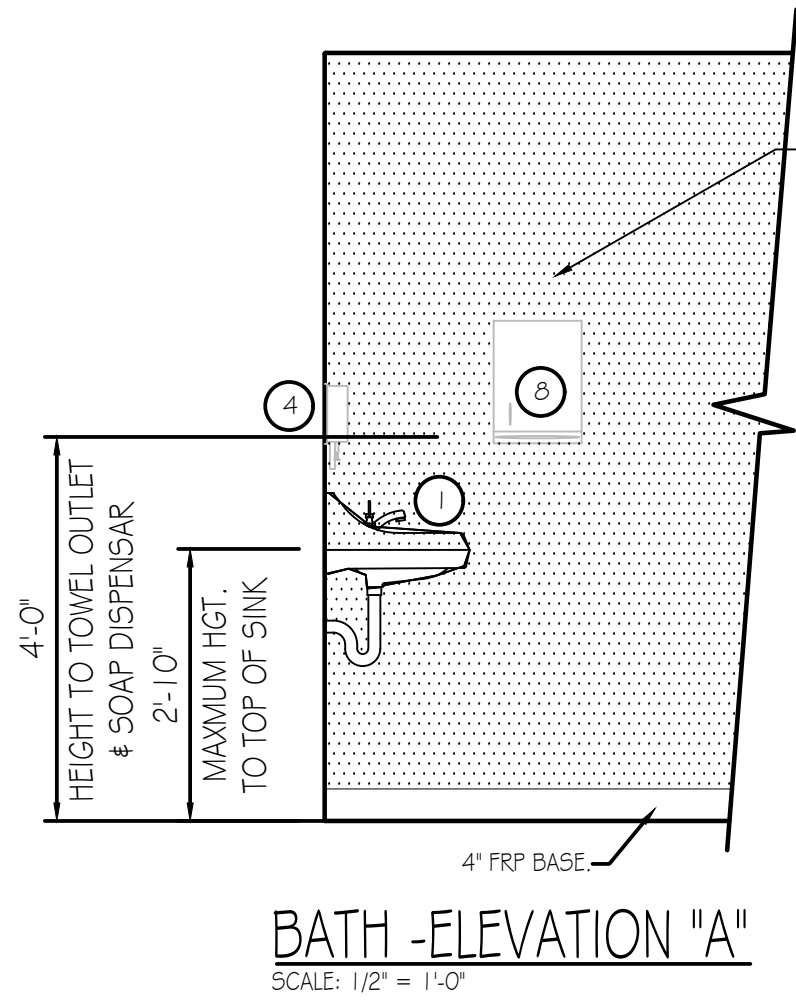
- 19 WASHING MACHINE AND CLOTHES DRYWE BY OWNER IN ACCORDANCE W/ ICC/ANSI A117.1-2017 SECTION 611.
- 20 30" WIDE x 52" LONG, ACCESS TO FRONT LOADING WASHER/DRYER IN ACCORDANCE W/ ICC/ANSI A117.1-2017 SECTION 611 AND FIGURE 611.2(A).

EXTERIOR DOOR CLEARANCES

- 21 MANEUVERING CLEARANCE AT DOOR (LATCH APPROACH-PULL SIDE) IN ACCORDANCE W/ 1 CC/ANSI A117.1-2017 404.2.3.2 (FIGURE A).
- 22 MANEUVERING CLEARANCE AT DOOR (FRONT APPROACH-PULL SIDE) IN ACCORDANCE W/ 1 CC/ANSI A117.1-2017 404.2.3.2 (FIGURE C)

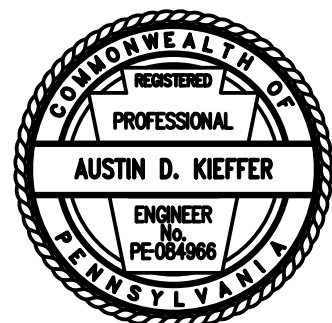


ENLARGED PARTIAL FLOOR PLAN  
SCALE: 1/2" = 1'-0"



BRADLEY CORP. (FOR REF. ONLY)  
FIXTURE/ACCESSORY LEGEND

- |    |                                |                    |
|----|--------------------------------|--------------------|
| 1  | SINK (W/FAUCET)                | SEE SPECIFICATIONS |
| 2  | ADA FLOOR MOUNTED WATER CLOSET | SEE SPECIFICATIONS |
| 3  | UTILITY SINK (W/FAUCET)        | SEE SPECIFICATIONS |
| 4  | SOAP DISPENSAR                 | MODEL 655          |
| 5  | GRAB BAR (36" LONG)            | MODEL 812          |
| 6  | GRAB BAR (42" LONG)            | MODEL 812          |
| 7  | GRAB BAR (18" LONG)            | MODEL 812          |
| 8  | TOWEL DISPENSAR                | MODEL 250-15       |
| 9  | TOILET TISSUE HOLDER           | MODEL 508          |
| 10 | 18" x 36" MIRROR               | MODEL 780-1836     |



PENNSYLVANIA GAME COMMISSION		
SOUTHCENTRAL REGIONAL OFFICE		SMITHFIELD TOWNSHIP   HUNTINGDON COUNTY
NEW 40' x 80' STORAGE BUILDING		
ENLARGED PLAN & ELEVATIONS		
REVISIONS	PROJECT NO.	SCRO-23-01
	DRAWN BY:	M. SPOTTIS
	DATE:	9/11/2024
	SHEET NO.	A-5



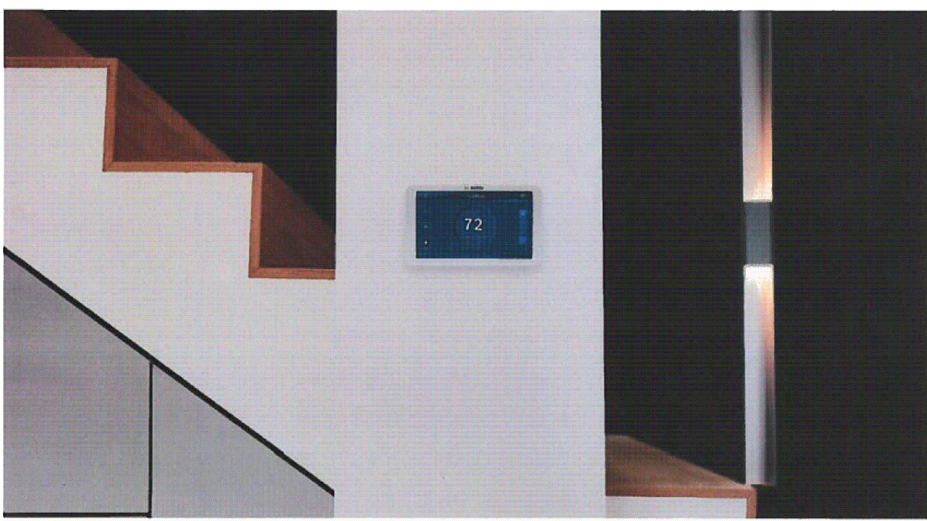
MECHANICAL CONSTRUCTION NOTES: HVAC SYSTEM TO BE A BOSCH HEAT PUMP SYSTEM. LAYOUT OF DUCTS, DUCT SIZES AND DIFFUSERS ARE MEANT TO BE USED AS A GUIDELINE. ACTUAL RUNS, SIZES AND LOCATIONS TO BE DETERMINED BY MANUFACTURER'S MODEL. THE FOLLOWING STEPS SHOULD BE FOLLOWED IN THE DESIGN AND INSTALLATION OF THE HVAC SYSTEM TO ENSURE EFFICIENCY AND COMFORT.

1. DETERMINE ROOM-BY-ROOM AND AIR-FLOWS USING ACCA MANUAL J CALCULATION PROCEDURES. (OR SUBSTANTIALLY EQUIVALENT)
2. SIZE DUCT SYSTEM ACCORDING TO ACCA MANUAL D CALCULATION PROCEDURES. (OR SUBSTANTIALLY EQUIVALENT)
3. SIZE HVAC EQUIPMENT TO SENSIBLE LOAD USING ACCA MANUAL S CALCULATION PROCEDURES (OR SUBSTANTIALLY EQUIVALENT).
4. INSTALL EQUIPMENT & DUCTS ACCORDING TO DESIGN SPECIFICATIONS USING INSTALLATION PROCEDURES FROM SIEMENS / MANUFACTURER'S SPECS.
5. INSTALL SO STATIC AIR PRESSURE DROP ACROSS THE AIR HANDLER IS WITHIN MANUFACTURER AND DESIGN SPECIFICATIONS.
6. PROVIDE BALANCED AIR FLOWS BETWEEN SUPPLY AND RETURN SYSTEMS TO MAINTAIN NEUTRAL PRESSURE.
7. EQUIPMENT AND ASSOCIATED ITEMS MUST BE APPROVED BY PGC HARRISBURG ENGINEERING DIVISION BEFORE START OF INSTALLATION.

FURNISH AND INSTALL A HEAT PUMP TO BE A 5 TON BOSCH BOVA - OGO-HDN I - M I&M OUTSIDE CONDENSAR UNIT, W/ BVA-48WN I -M20 INDOOR AIR HANDLER/ FURNACE AND EHK-15B-15kW MINIMUM BACKUP STAGED ELECTRIC HEAT STRIP. UNITS TO ACHIEVE A MINIMUM 17 SEER AND 8.0 HSPF (OR SUBSTANTIALLY EQUIVALENT).

LP GAS PIPING NOTES: THE MECHANICAL CONTRACTOR SHALL FURNISH AND INSTALL NEW RIGID LP GAS PIPING SYSTEM INTO THE BUILDING ENVELOPE THEN CONTINUE WITH CSST FLEXIBLE GAS PIPING, VALVES, PIPE HANGERS, AND ALL MECHANICAL MATERIALS REQUIRED TO CONNECT TO PROPANE TANKS TO NEW SUSPENDED UNIT HEATER. PIPING SPECS ARE AS FOLLOWS:

1. RIGID PIPING -BLACK STEEL PIPE TO COMPLY WITH ASTM A53/A53M, SCHEDULE 40, TYPE E OR 5 GRADE B CARBON STEEL COMPLETE WITH ALL FITTINGS TO COMPLY WITH ASME B16.3.
2. FLEXIBLE PIPING -CSST 1/2" DIAMETER -300 SERIES STAINLESS STEEL STRIP CONFORMING TO ASTM A240 RATED FOR 25 PSI AND HAVE AN ELEVATED PRESSURE RATING OF 125G FOR SIZES UP TO 1 1/2" AND 25G FOR 1 1/2" AND 2".



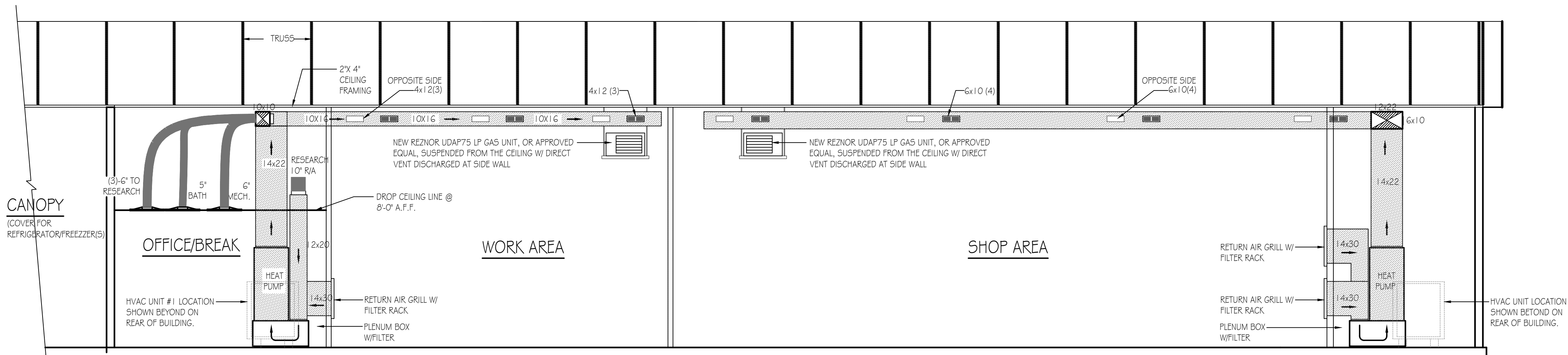
Product Specifications

- 5 inch Touch Screen 854 x 480 Pixels
- Supplies 2 Transformer Outputs (120V and 240V)
- Cable Required for Installation
- 7 Relay Terminals: G, Y, Y2, W1, W2, A/C, N, H/24
- 1 Solid Terminal: Neutral Rail (Integrates from Bosch Water Source Heat Pumps)
- W/ R 802.11 Wi-Fi @ 2.4GHz
- 3 year limited warranty

Thermostat Model	Part Number
Bosch Connected Control RCC100 Thermostat	T 8-733-948-009
Thermostat Spare Parts	Part Number
Wall Plate, Screwdriver, Screws & Wall Anchors, Jumper Cable	8-733-948-084

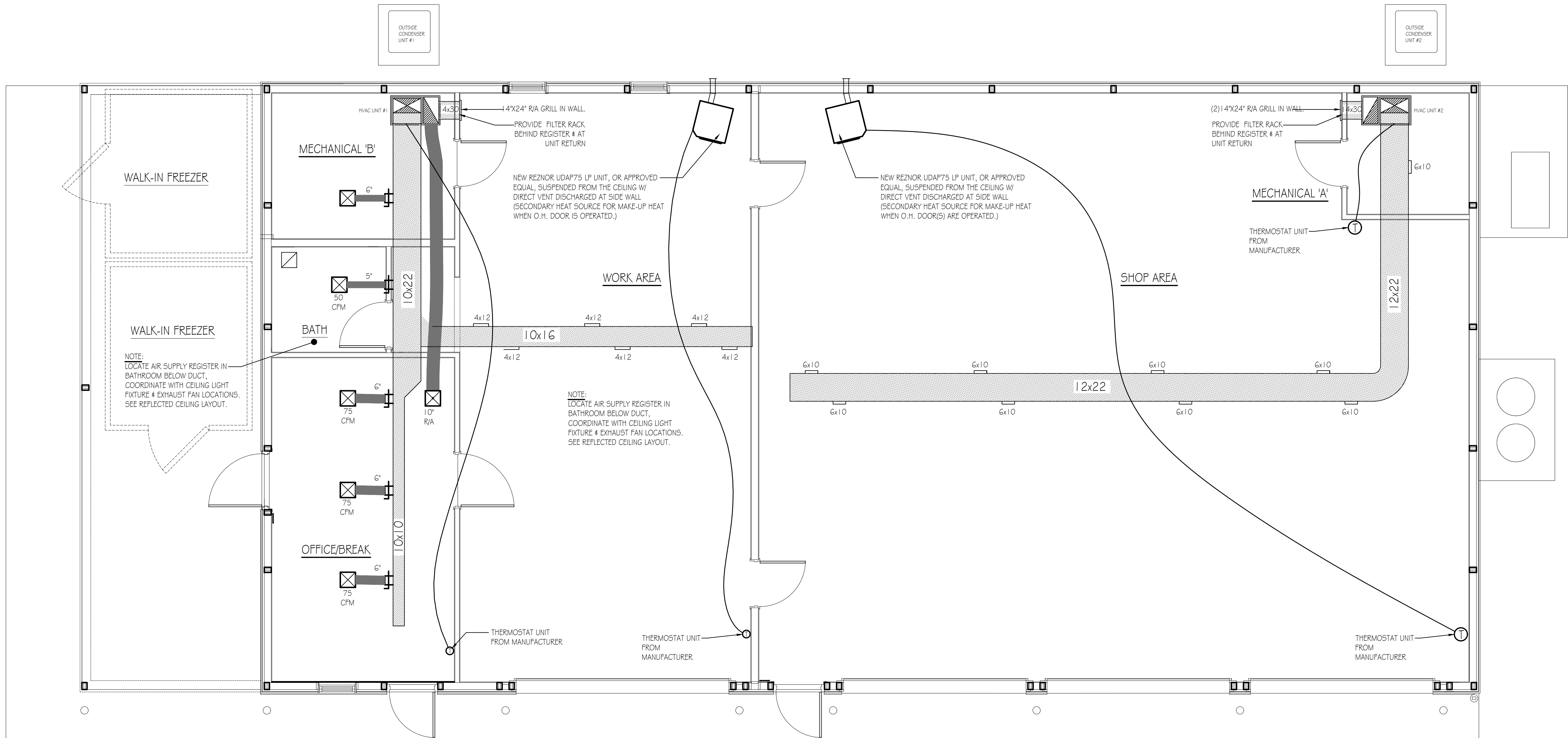
MINIMUM OUTDOOR AIRFLOW RATE CHART

OCCUPANCY CLASSIFICATION	OCCUPANCY DENSITY /SQUARE FOOT	CFM/PERSON	EXHAUST AIRFLOW RATE
BUSINESS-OFFICE	367 SQ.FT./2 PERSONS	5 CFM/ 2 PERSONS-10 CFM	-
BUSINESS-BATH	60 SQ. FT./ 1 PERSON	-	110 CFM EXHAUST FAN
BUSINESS-UTILITY	125 SQ. FT./1 PERSON	20 CFM/PERSON -20 CFM	-
STORAGE-WORK AREA	855 SQ. FT./3 PERSONS	10 CFM/ 3 PERSONS -30 CFM	-
STORAGE-SHOP AREA	1793 SQ. FT./6 PERSONS	10 CFM/ 6 PERSONS -80 CFM	-



BUILDING SECTION - MECHANICAL (HVAC)

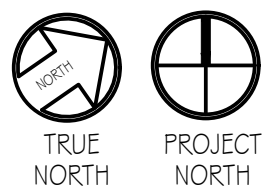
SCALE: 1/4" = 1'-0"



FLOOR PLAN - MECHANICAL (HVAC)

SCALE: 1/4" = 1'-0"

GENERAL NOTE:  
MECHANICAL CONTRACTOR TO BE RESPONSIBLE FOR ALL NATURAL GAS SUPPLY LINES, REGULATORS, CONNECTIONS, ETC TO GAS UNIT LOCATIONS.



PENNSYLVANIA GAME COMMISSION		
SOUTHCENTRAL REGIONAL OFFICE	SMITHFIELD TOWNSHIP	HUNTINGDON COUNTY
NEW 40' x 80' STORAGE BUILDING		
MECHANICAL FLOOR PLAN & DETAILS		
REVISIONS	PROJECT NO.	SCRO-23-01
	DRAWN BY:	M. SPOTTIS
	DATE:	9/11/2024
	SHEET NO.	M-1

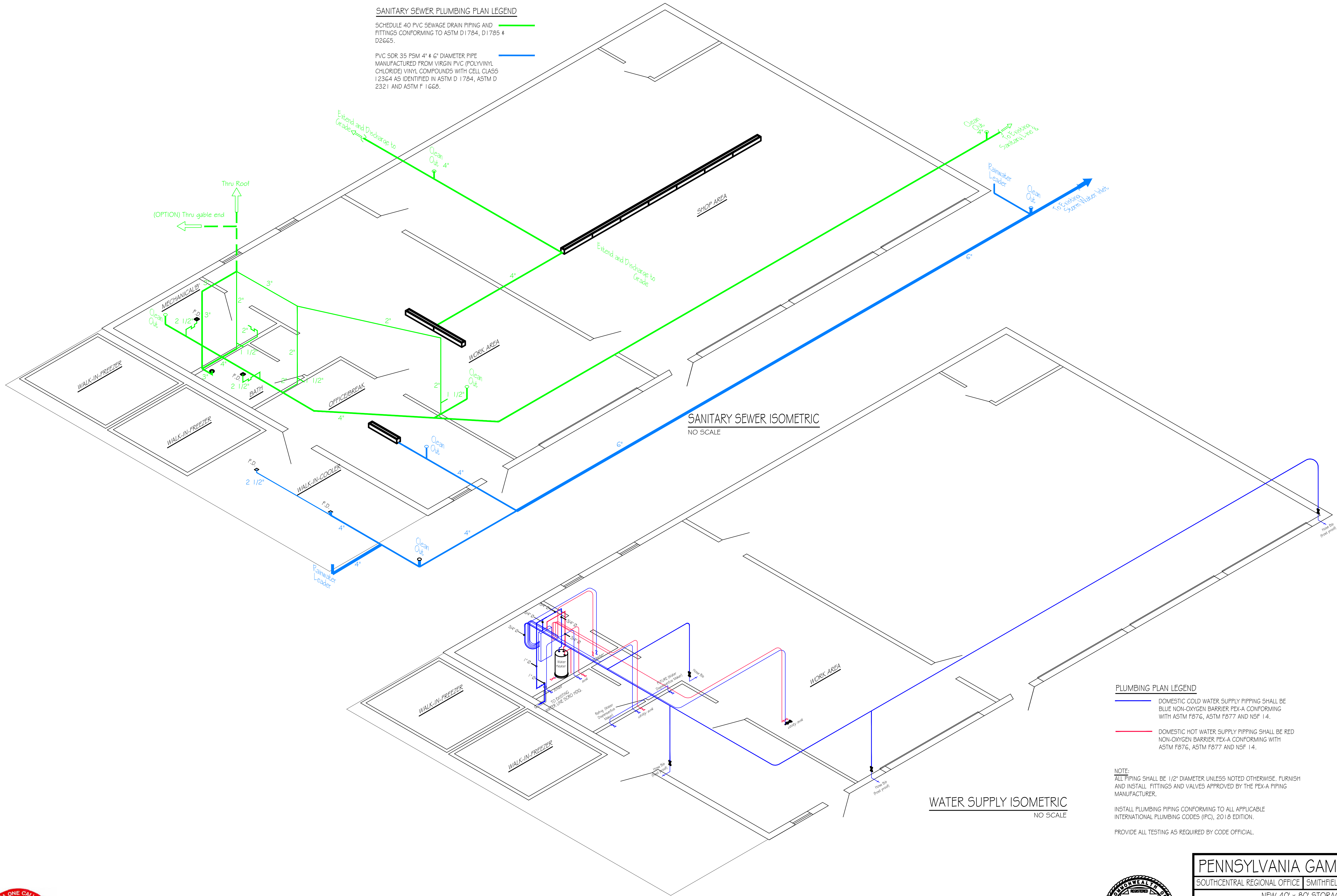




SANITARY SEWER PLUMBING PLAN LEGEND

SCHEDULE 40 PVC SEWAGE DRAIN PIPING AND FITTINGS CONFORMING TO ASTM D1784, D1785 & D2665.

PVC SDR 35 PSM 4" & 6" DIAMETER PIPE MANUFACTURED FROM VIRGIN PVC (POLYVINYL CHLORIDE) VINYL COMPOUNDS WITH CELL CLASS 12364 AS IDENTIFIED IN ASTM D 1784, ASTM D 2321 AND ASTM F 1668.



PLUMBING PLAN LEGEND

DOMESTIC COLD WATER SUPPLY PIPING SHALL BE BLUE NON-OXYGEN BARRIER PEX-A CONFORMING WITH ASTM F876, ASTM F877 AND NSF 14.

DOMESTIC HOT WATER SUPPLY PIPING SHALL BE RED NON-OXYGEN BARRIER PEX-A CONFORMING WITH ASTM F876, ASTM F877 AND NSF 14.

NOTE:  
ALL PIPING SHALL BE 1/2" DIAMETER UNLESS NOTED OTHERWISE. FURNISH AND INSTALL FITTINGS AND VALVES APPROVED BY THE PEX-A PIPING MANUFACTURER.

INSTALL PLUMBING PIPING CONFORMING TO ALL APPLICABLE INTERNATIONAL PLUMBING CODES (IPC), 2018 EDITION.

PROVIDE ALL TESTING AS REQUIRED BY CODE OFFICIAL.

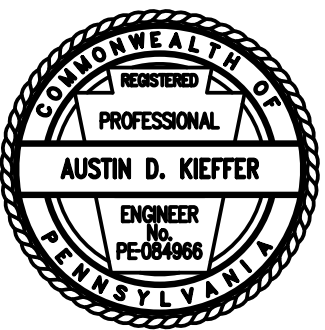
PENNSYLVANIA GAME COMMISSION

SOUTHCENTRAL REGIONAL OFFICE | SMITHFIELD TOWNSHIP | HUNTINGDON COUNTY

NEW 40' x 80' STORAGE BUILDING

PLUMBING FLOOR PLAN, ELEVATIONS & DETAILS

REVISIONS	PROJECT NO.	SCRO-23-01
	DRAWN BY:	M. SPOTTS
	DATE:	9/11/2024
	SHEET NO.	P-1





LOAD CENTER: 200A SERVICE PANEL "A" SCHEDULE VOLTAGE: 240/120V SERVICE FEEDER SIZE: 250 kcmil					
Circuit No.	Circuit Breakers		200 AMP Main Service Breaker	Wiring	Conduit
	Poles	Amps		No./Size	Size
*1,3	2	50	220 VOLT OUTLET (WELDER)	3 - #6	1-1/4"
2,4	2	30	220 VOLT OUTLET (AIR COMPRESSOR)	3 - #10	3/4"
*5,7	2	50	220 VOLT OUTLET (WELDER)	3 - #6	1-1/4"
6,8	2	30	220 VOLT OUTLET (AIR COMPRESSOR)	3 - #10	3/4"
9,11	2	40	HVAC OUTSIDE UNIT #2	3 - #8	1"
10,12	2	60	HVAC INSIDE AIR HANDER UNIT #2 HEAT STRIP	Verify w/ M.C.	Verify
13,15	2	30	HVAC INSIDE AIR HANDER UNIT #2	Verify w/ M.C.	Verify
14	1	20	SERVICE PANEL RECEPTACLE	3 - #12	3/4"
16	1	20	SHOP AREA MECHANICAL GFI RECEPTACLES	3 - #12	3/4"
17	1	20	SHOP AREA GFI RECEPTACLES	3 - #12	3/4"
18	1	20	SHOP AREA GFI RECEPTACLES	3 - #12	3/4"
19	1	20	SHOP AREA LIGHTING	3 - #12	3/4"
20,22	2	20	GARAGE DOOR OPENER RECEPTACLES	3 - #12	3/4"
21	1	20	GAS HEATER	3 - #12	3/4"
23-42			SPARE SPACES		

PANEL SCHEDULE NOTES:

- 1,3-Match receptacle to welder  
5,7-Match receptacle to welder  
9,11-Match receptacle to cooler trailer

GENERAL ELECTRICAL NOTES:

- FURNISH AND INSTALL SOLID COPPER CONDUCTORS AS SPECIFIED; NO ALUMINUM AND NO STRANDED. MC CABLE IS APPROVED FOR ALL HOME RUN CIRCUITS IF NEATLY INSTALLED.
- ALL CONDUCTORS FOR 120V CIRCUITS OVER 100' IN LENGTH SHALL BE MINIMUM #14AWG. ALL CONDUCTORS FOR 120V CIRCUITS OVER 150' IN LENGTH SHALL BE MINIMUM #8AWG. CONTRACTOR IS RESPONSIBLE FOR VERIFICATION OF FINAL CIRCUIT LENGTHS AND CORRESPONDING WIRE SIZE TO ENSURE VOLTAGE DROP IS MAINTAINED WITHIN NEC LIMITS.
- ALL WORK SHALL BE PERFORMED AS REQUIRED BY APPLICABLE SECTION OF THE NATIONAL ELECTRICAL CODE (NEC), LATEST EDITION, AND ALL GOVERNING UCC BUILDING CODES AND REGULATIONS.
- PROVIDE GROUNDING AND BONDING FOR ELECTRICAL SYSTEMS. ELECTRICAL COMPONENTS, DEVICES AND ACCESSORIES SHALL BE LISTED AND LABELED AS DEFINED IN NFPA 70 AND COMPLY WITH UL 467 FOR GROUNDING AND BONDING MATERIALS AND EQUIPMENT. INSTALL INSULATED EQUIPMENT GROUNDING CONDUCTORS ALL FEEDERS AND BRACH CIRCUITS, LIGHTING CIRCUITS, RECEPTACLE CIRCUITS SINGLE PHASE MOTOR AND AFFLUENCE BRANCH CIRCUITS, ARMORED AND METAL-CLAD CABLE RUNS AND AS REQUIRED BY NFPA 70.
- PROVIDE ALL HANGERS AND SUPPORTS FOR ELECTRICAL SYSTEMS, INCLUDING STEEL SLOTTED SUPPORT SYSTEMS, CONDUIT AND CABLE SUPPORT DEVICES, SUPPORTS FOR CONDUCTORS IN VERTICAL CONDUIT. HANGERS AND SUPPORTS SHALL HAVE A FLAME RATING OF CLASS 1 AND BE SELF-EXTINGUISHING ACCORDING TO ASTM D 635.

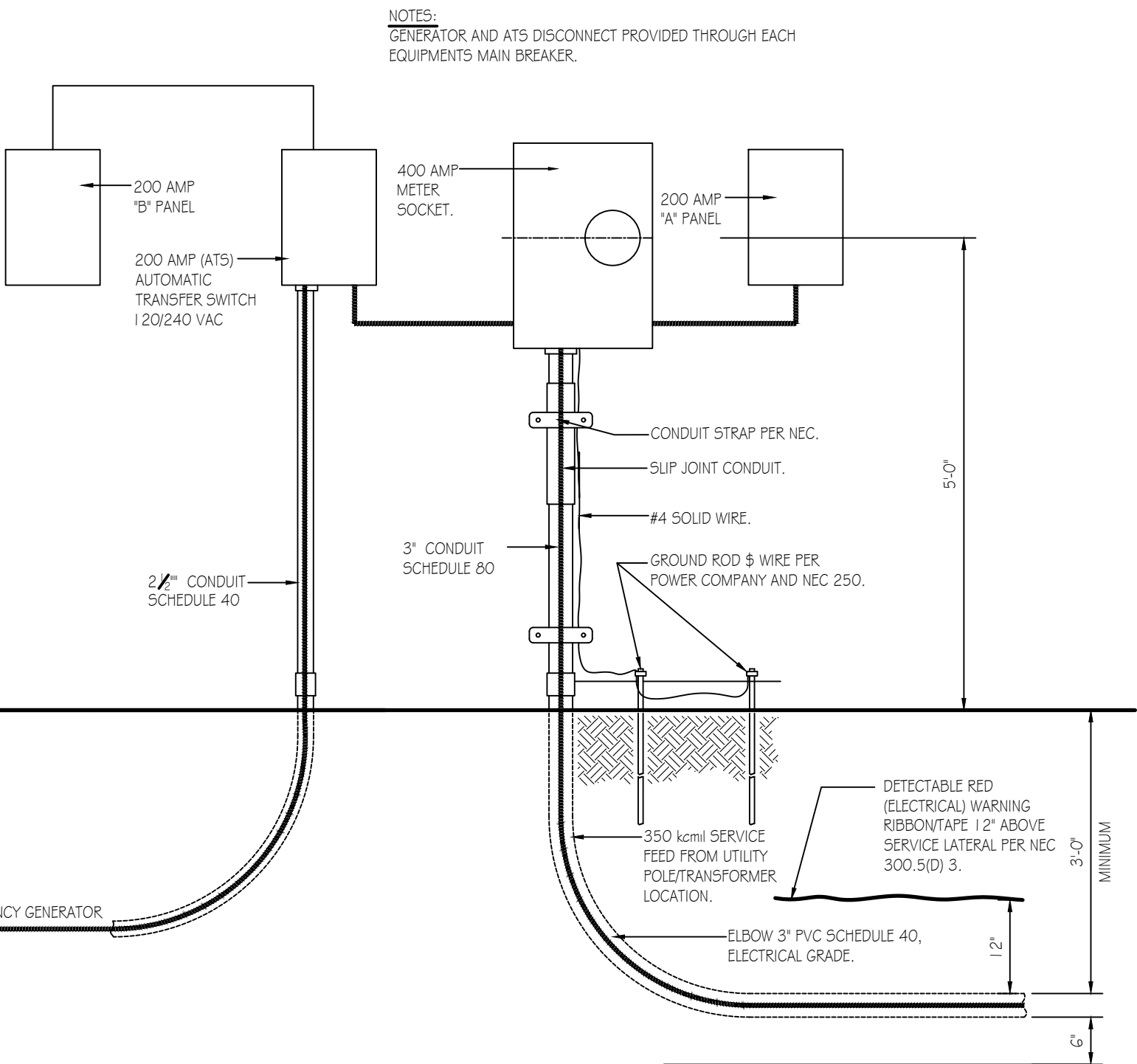
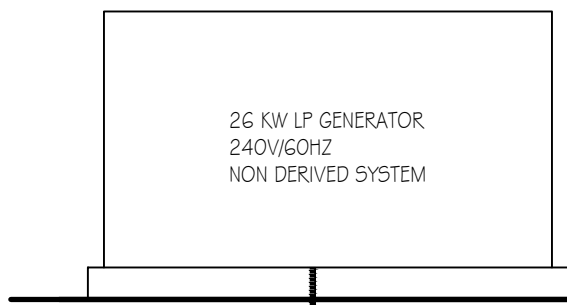
LOAD CENTER: 200A SERVICE PANEL "B" SCHEDULE VOLTAGE: 240/120V SERVICE FEEDER SIZE: 250 kcmil					
Circuit No.	Circuit Breakers		200 AMP Main Service Breaker	Wiring	Conduit
	Poles	Amps		No./Size	Size
1,3	2	30	WALK-IN-FREEZER	Verify w/ Supp.	Verify
2,4	2	30	WALK-IN-FREEZER	Verify w/ Supp.	Verify
5,7	2	30	(FUTURE) WALK-IN-COOLER	Verify w/ Supp.	Verify
6,8	2	30	MECHANICAL ROOM DRYER RECEPTACLE	3 - #10	3/4"
9,11	2	40	HVAC OUTSIDE UNIT #1	3 - #10	3/4"
10,12	2	60	HVAC INSIDE AIR HANDER UNIT #1 HEAT STRIP	Verify w/ M.C.	Verify
13,15	2	30	HVAC INSIDE AIR HANDER UNIT #1	Verify w/ M.C.	Verify
14,16	2	30	WATER HEATER	3 - #12	3/4"
17	1	20	WORK AREA MECHANICAL RECEPTACLES WITH PROTECTION	3 - #12	3/4"
18	1	20	WORK AREA RECEPTACLES WITH PROTECTION	3 - #12	3/4"
19	1	20	WORK AREA SINK/COUNTER GFI RECEPTACLES	3 - #12	3/4"
20	1	20	WORK AREA GENERAL LIGHTING	3 - #12	3/4"
21	1	20	RESEARCH, BATH, & MECH. LIGHTING	3 - #12	3/4"
22	1	20	RESEARCH/BATH SINK GFI RECEPTACLES	3 - #12	3/4"
23	1	20	RESEARCH RECEPTACLES	3 - #12	3/4"
24	1	20	CLOTHES WASHER RECEPTACLE	3 - #12	3/4"
25	1	20	EXTERIOR SECURITY LIGHTS	3 - #12	3/4"
26	1	20	GAS HEATER	3 - #12	3/4"
27,29	2	20	GARAGE DOOR OPENER RECEPTACLES	3 - #12	3/4"
28	1	20	DEDICATED RECEPTACLE	3 - #12	3/4"
30	1	20	DEDICATED RECEPTACLE	3 - #12	3/4"
31	1	20	REFRIGERATOR	3 - #12	3/4"
26-42			SPARE SPACES		

- PROVIDE CAT6 WIRE LABELED AND RAN FROM EACH DATA BOX TO MECHANICAL ROOM. PROVIDE 12' ADDITIONAL COILED LENGTH IN MECHANICAL ROOM FOR EACH RUN.
- MOUNT COMBINATION EXTINGEMERGENCY LIGHTING UNITS TO THE LIGHTING BRANCH CIRCUIT IN THE ROOM IT IS SERVING ON THE LINE SIDE OF ANY SWITCHES.
- VERIFY EXACT MOUNTING LOCATIONS AND HEIGHTS OF DISCONNECT AND EXTERIOR RECEPTACLES FOR FREEZER AND COOLER WITH MANUFACTURER IN FIELD.
- ELECTRICAL CONTRACTOR RESPONSIBLE FOR VENTING BATH EXHAUST VENT ABOVE CEILING TO EXTERIOR WALL AND TO EXTERIOR AS REQUIRED. PROVIDE EXTERIOR VENT COMPLETE WITH CAPISCREEN AS REQUIRED.
- OUTSIDE HVAC UNIT DISCONNECT TO BE TIED INTO SURGE PROTECTOR AS REQUIRED. TYPICAL FOR BOTH HVAC UNIT LOCATIONS.
- ELECTRICAL CONTRACTOR TO PROVIDE 1/2" Ø SCHEDULE 40 PVC CONDUIT AT EACH EXTERIOR DOOR LOCATION FOR FUTURE SECURITY SYSTEM INSTALLATION. CONDUIT TO BE EXTENDED FROM ABOVE METAL CEILING IN WALL CAVITY TO AN EXTERIOR MOUNTED WEATHERPROOF BOX WITH COVER PLATE FOR FUTURE SECURITY SWIPE AND EXTEND 1/2" Ø SCHEDULE 40 CONDUIT HORIZONTALLY FROM BOX TO HOLLOW METAL DOOR JAMB FOR FUTURE ELECTRIC STRIKE ASSOCIATED WITH SEC

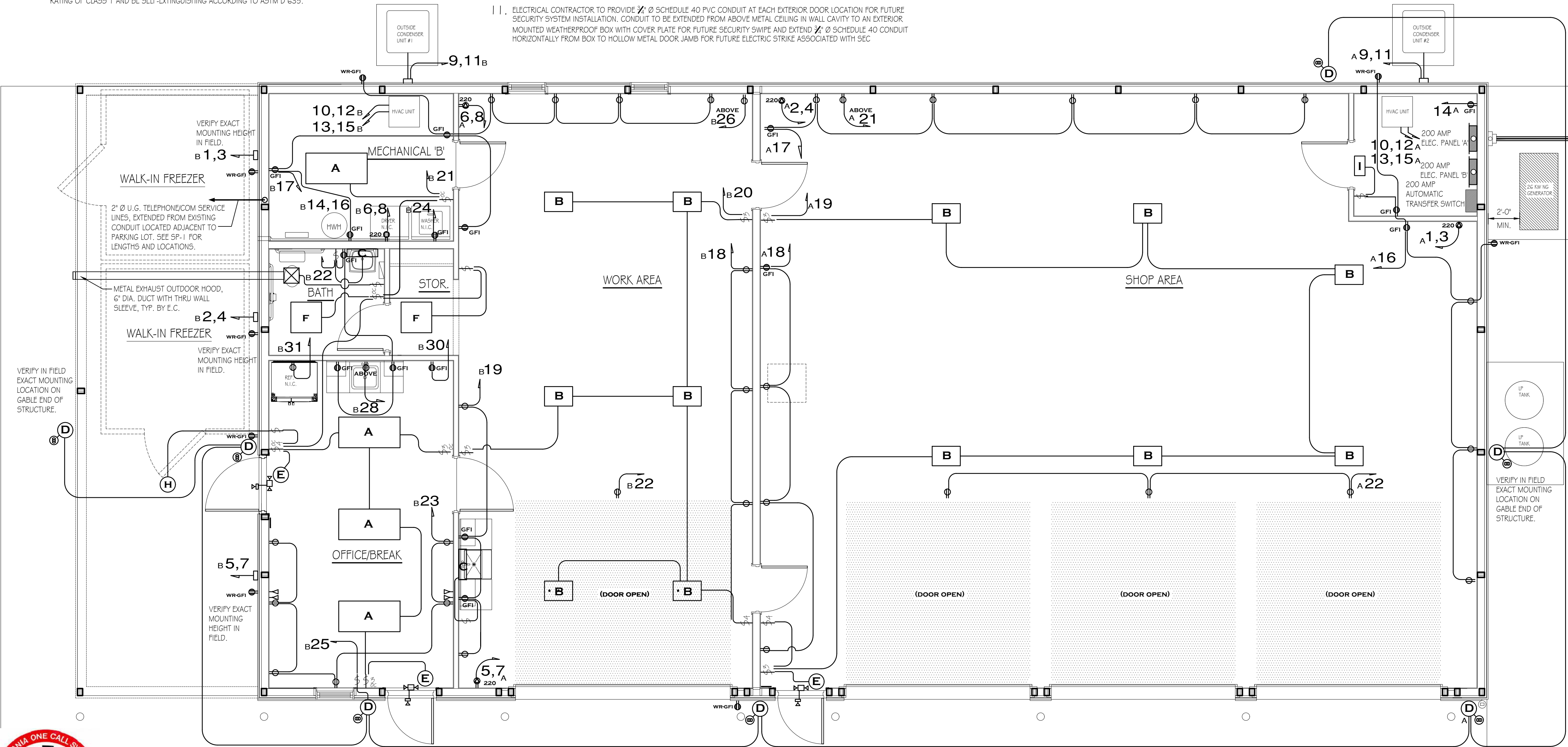
LIGHTING FIXTURE SCHEDULE		
MARK	QTY	FIXTURE TYPE
A	4	2' X 4' LED PANEL
B	12	15.25' X 22" 4 LAMP LED HIGH BAY
C	2	2' INTEGRATED LED WALL MOUNT VANITY LIGHT (1.8 WATT)
D	7	SECURITY PHOTOCELL, WALL MOUNT/OUTSIDE UNIT 1.8 WATT LED
E	3	EXIT & EMERGENCY COMBO LIGHT W/BATTERIES & REMOTE HEAD
F	2	2' X 2' LED PANEL
G	1	110 CFM, LED LIGHT (1.1 WATT) CEILING MOUNT EXHAUST FAN
H	1	LED SURFACE MOUNTED CANOPY
I	1	LED WALL MOUNTED UTILITY (1.5 WATT)

ELECTRICAL WIRING SYMBOLS	
	GFI-WATER RESISTANT-RECEPTACLE
	GFI RECEPTACLE
	DUPLEX OUTLET, SPLIT CIRCUIT
	DUPLEX OUTLET
	50 AMP, 220 VOLT OUTLET, WELDER (VERIFY TYPE & LOCATION WITH FGC)
	30 AMP, 220 VOLT OUTLET
	30 AMP, 220 VOLT OUTLET (DRYER)
	HOME RUN CIRCUIT #
	TELECOMMUNICATIONS OUTLET
	JUNCTION BOX
	PHOTO CELL
	EXIT LIGHTING W/BATTERIES
	SWITCH
	3 SWITCH, 3 WAY
	4 SWITCH, 4 WAY
	2C SWITCH, OCCUPANCY SENSOR
	PRESSURE SWITCH
	WATER PUMP

RECEPTACLE & SWITCH MOUNTING HEIGHTS	
WASHER	36"
DRYER	36"
OFFICE RECEPTACLES AND TELEPHONE	18"
ALL SWITCHES AND OTHER RECEPTACLES	48"



UNDERGROUND SERVICE/POWER RISER DIAGRAM DETAIL  
NO SCALE



FLOOR PLAN - ELECTRICAL  
SCALE: 1/4" = 1'-0"

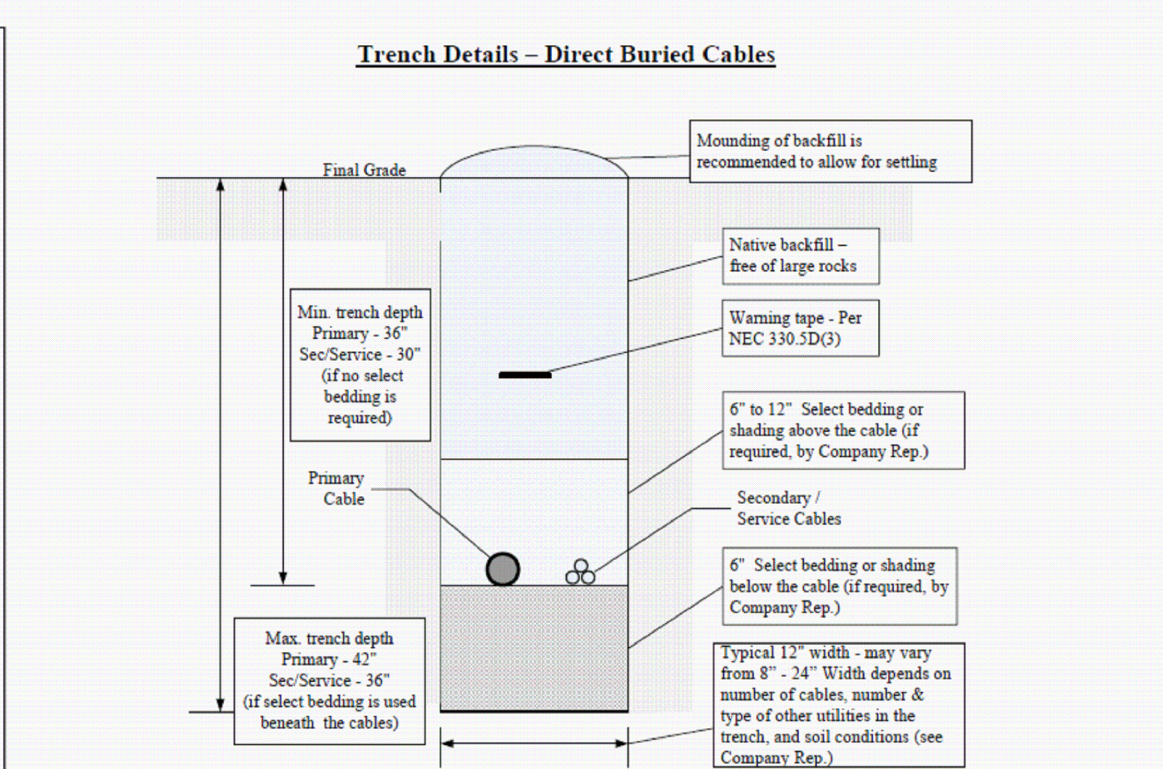
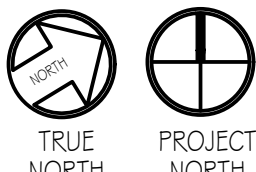
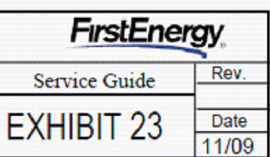


TABLE - MINIMUM COVER REQUIRED PER CODE (INCHES)					
Owner / Code	Customer Installed Facilities / NEC (1)				Company / NEC
	Direct Buried	Rigid Metallic Conduit (RMC)	Rigid Nonmetallic Conduit (RNC)	Street / Road Parking Lot (2)	Direct Buried
0 - 600 V	24	6	18	24	24
> 600 V - 22 kV	30	6	18	24	30
> 22 kV - 40 kV	36	6	24	24	30

- Notes: (1) FEOC typically requires an additional 6 inches of cover to allow for variation in final grade.  
(2) For cables located beneath roads under Penn DOT jurisdiction, cables must be installed in conduit and have a minimum of 36 inches of cover.

TRENCH DETAILS FOR DIRECT BURIED CABLES



PENNSYLVANIA GAME COMMISSION		
SOUTHCENTRAL REGIONAL OFFICE	SMITHFIELD TOWNSHIP	HUNTINGDON COUNTY
NEW 40' x 80' STORAGE BUILDING		
ELECTRICAL FLOOR PLAN, SCHEDULES & DETAILS		
REVISIONS	PROJECT NO.	SCRO-23-01
	DRAWN BY:	M. SPOTTS
	DATE:	9/11/2024
	SHEET NO.	E-1

