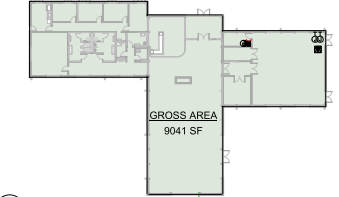


3 FIRST FLOOR NET AREAS
A-101 1/32" = 1'-0"



2 FIRST FLOOR GROSS AREAS
A-101 1/32" = 1'-0"

1 FIRST FLOOR CONSTRUCTION PLAN
A-101 1/8" = 1'-0"

PROJECT INFORMATION:
9053 GROSS SQUARE FEET, 6433 NET SQUARE FEET OF PROGRAM AREA (71%)
Exposed glulam trusses in the Auditorium, with suspended ceilings in offices and toilet rooms.
Glulam structure and exposed deck in the Museum area.
The auditorium wing is separated from the Museum to create separate fire areas, reducing the occupant count of each area below 300.
Exterior materials include manufactured stone and cement board siding. Museum area floor is polished concrete.

DESCRIPTION	DESCRIPTION
RECORD REVISIONS	
Signature Date	
MOSHIER STUDIO	
1501 REEDSDALE ST. SUITE 301 PITTSBURGH, PENNSYLVANIA 15233	
COMMONWEALTH OF PENNSYLVANIA DEPARTMENT OF GENERAL SERVICES	
HARRISBURG, PENNSYLVANIA	
DGS PROJECT No. A-0200-0056 PHASE 1	
NEW PYMATUNING WILDLIFE LEARNING CENTER	
PENNSYLVANIA GAME COMMISSION 20877 HARTSTOWN ROAD, LINESVILLE PA 16424	
FIRST FLOOR PLAN	

VERIFY SCALE
BAR IS ONE (1) INCH LONG
ON ORIGINAL DRAWING:
0 1
IF BAR IS NOT ONE (1) INCH LONG,
ADJUST SCALE ACCORDINGLY.
CONTRACTOR SHALL FIELD VERIFY
ALL DIMENSIONS.
VARIANCE FROM CONTRACT
DOCUMENTS NOT PERMITTED
WITHOUT PROFESSIONAL & BUREAU
OF CONSTRUCTION APPROVAL.

DRAWN BY CHM DATE 05.19.2022
CHECKED BY CHM SCALE As indicated
DRAWING NO. A-101

DESIGN DEVELOPMENT SUBMISSION
NOT FOR CONSTRUCTION