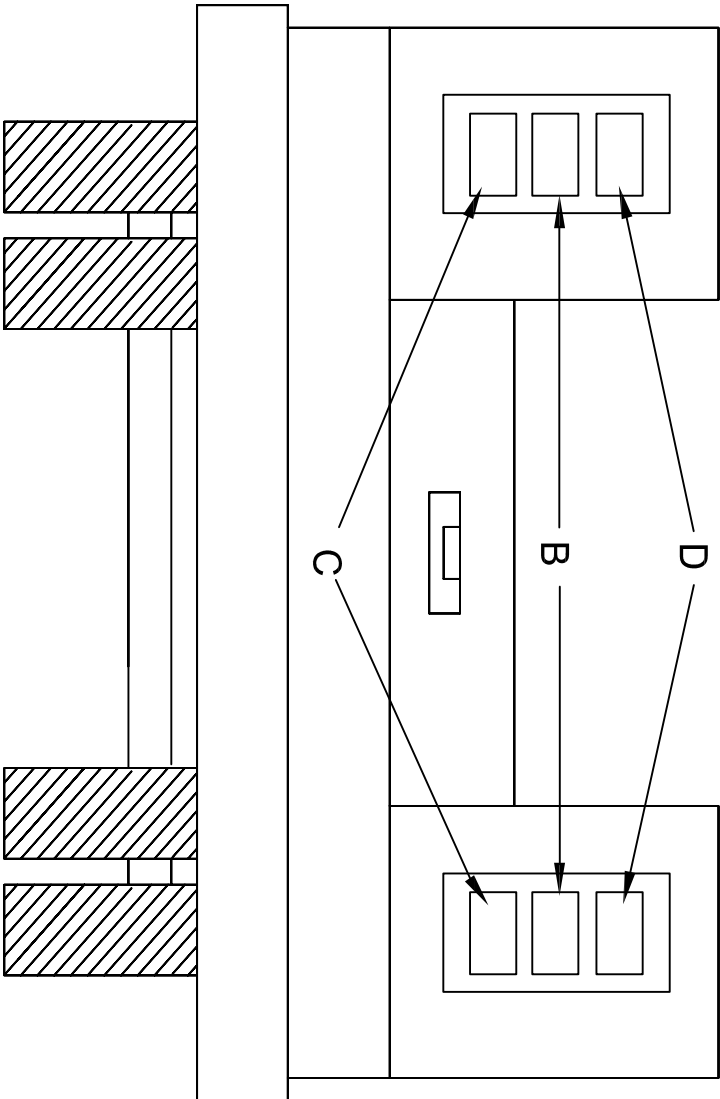


REAR VIEW

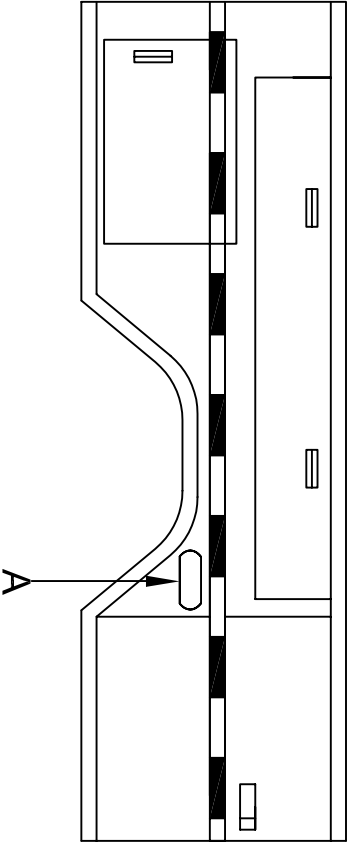


The purpose of this drawing is to show locations for Crew Cab Body Lighting, Whelen part # PADOTSYS5.

- A. LINZ6AD Amber Warning Light, grommet mounted, one each side.
- B. M6BUD Back up Lights.
- C. M5BTDD Stop / Tail / Turn Lights.
- D. M6AD Amber Warning Lights.

Note: Items B, C, & D are Flush mounted in Black Flange Housing #11-486152-000.

Curb Side



PA DEPARTMENT OF TRANSPORTATION

Crew Cab Body Lighting

REVISIONS						
NO.	DATE	BY				
1			DRAWN BY	TOD	SCALE	EQN-120M
2			DATE	09/28/11	CHK'D BY	DMA
3						SHEET 1 OF 1