

LOAD CENTER: 200A SERVICE PANEL SCHEDULE			
VOLTAGE: 240/120V			
SERVICE FEEDER SIZE: 2-#4/0 & 1-#2 AL			
Circuit No.	Circuit Breakers Poles	Amps	Wiring No./Size
			200 AMP Main Service Breaker
1,3	2	40	HVAC Outside Unit
2,4	2	30	HVAC Inside Air Handler Unit
5,7	2	40	HVAC Outside Unit
6,8	2	30	HVAC Inside Air Handler Unit
9,11	2	20	Well Pump
10,12	2	30	Water Heater
13,15	2	20	Septic Dose Pump
16	1	20	Septic Tank Alarm
17	1	20	Exit Lighting
18	1	20	Conference Room Lighting
19	1	20	Offices, Breakroom, Duck Lighting
20	1	20	Corridor & Mechanical Room Lighting
21	1	20	Restrooms Lighting
22	1	20	Duck/Goose Check Lighting
23	1	20	Exterior Entrances Lighting
24	1	20	Exterior Rear Lighting
25	1	20	Office Receptacles
26	1	20	Breakroom Receptacles
27	1	20	Refrigerator
28	1	20	Break Room Exhaust Fan
29	1	20	Duck & Mech. Room Receptacles
30	1	20	Conference Room East Receptacles
31	1	20	Conference Room West Receptacles
32	1	20	Goose Check Receptacles
33	1	20	Restroom Receptacles
34	1	20	Mechanical Room Receptacles
35	1	20	Restroom Exhaust Fans
36	1	20	Service Panel Receptacle
37	1	20	Exterior PGC Sign Lights
38-60			Spare Spaces

PANEL SCHEDULE NOTES:
All exposed wiring in min 3/4" Ø metal conduit, all concealed wiring shall be MC.

LIGHTING FIXTURE SCHEDULE			
MARK	QTY	FIXTURE TYPE	MODEL
A	15	2' x 4' LED Flat Panel	LITHONIA EPANL 22 40L 35k
B	24	2' x 2' LED Flat Panel	LITHONIA EPANL 22 34L 35k
C	3	1 x 4' LED Surface Mounted	LITHONIA 9BL4LP835
D	1	1 1/2" Round LED Surface Mount	LITHONIA FMLRL 1 1/2 14840 M4
E	2	2" Integrated LED wall mount vanity light	LITHONIA FMVTSL 3000K
F	1	4" Integrated LED wall mount vanity light	LITHONIA FMVTSL 3000K
G	7	6" Round Recessed Downlight	LITHONIA WFG LED 40K MVOLT w/New Construction Pan
H	3	WEDGE LED Architectural Wallpack	LITHONIA WEDGE I LED 300K
I	4	LED Site Lighting Wall Mounted	LITHONIA TWX2 LED ALO 40K MVOLT DBBTD
J	2	Linear Asymmetric Distributed Bronze Spot Light with LED source with integral driver. 12" stem with knuckle	AMETRIX A04-S1-A-4000-LED-40K-120-b-AK12

ELECTRICAL WIRING SYMBOLS	
	Duplex GFI Receptacle
	Duplex Outlet
	Quad Outlet
	Home Run/Circuit #
	Water Heater
	Telecommunications Outlet
	Exit & Emergency Egress Lighting
	w/back-up batteries
	Photo Cell
	Switch
	Switch, 3 Way
	Switch, 4 Way
	Occupancy Sensor
	Pressure Switch
	Water Pump
	Dusk to Dawn Photocell
	Exhaust Fan

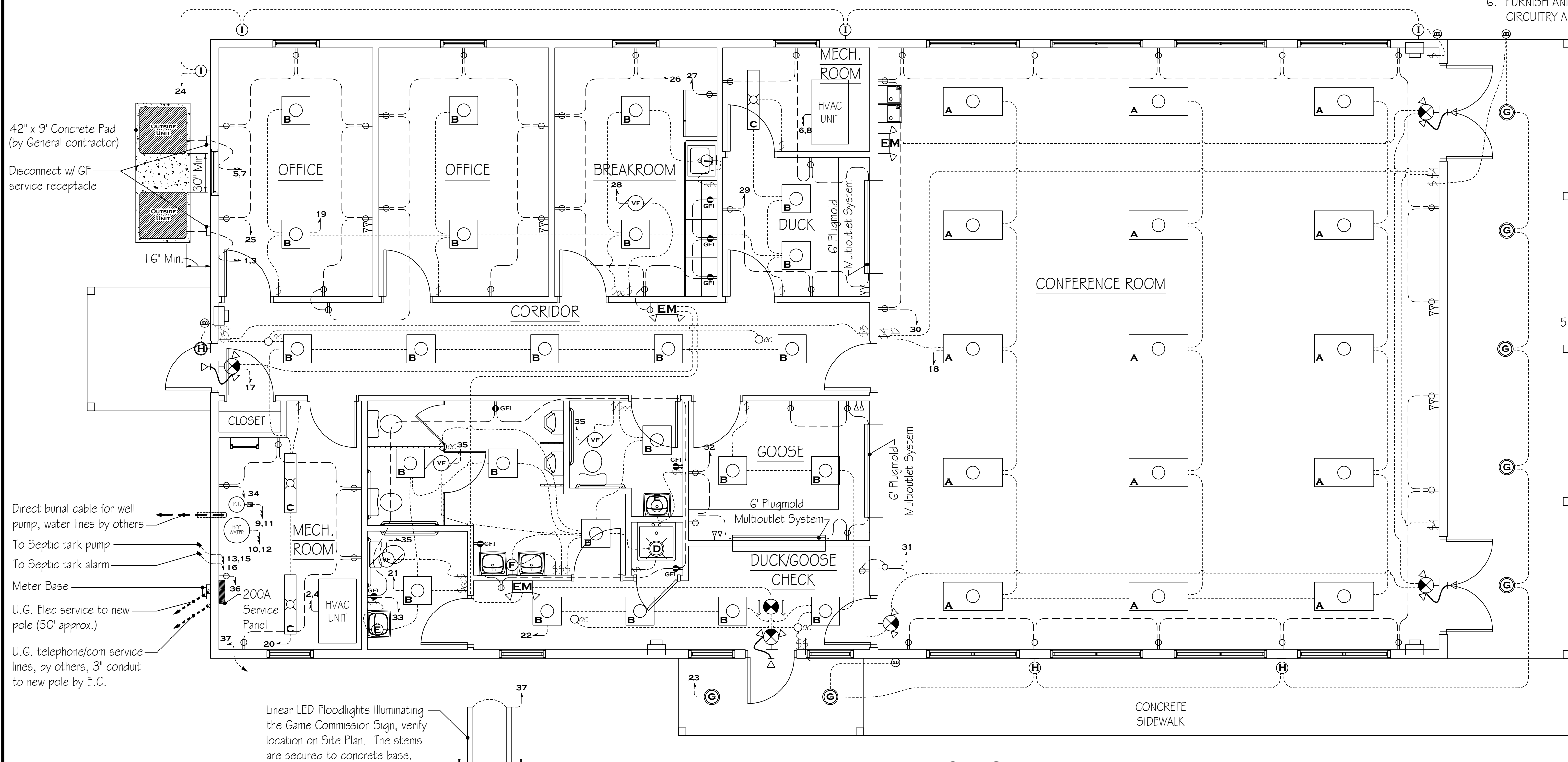
GENERAL ELECTRICAL NOTES:

- FURNISH AND INSTALL SOLID COPPER CONDUCTORS AS SPECIFIED; NO ALUMINUM AND NO STRANDED. MC CABLE IS APPROVED FOR ALL HOME RUN CIRCUITS IF NEATLY INSTALLED.
- ALL CONDUCTORS FOR 120V CIRCUITS OVER 100' IN LENGTH SHALL BE MINIMUM #10AWG. ALL CONDUCTORS FOR 120V CIRCUITS OVER 150' IN LENGTH SHALL BE MINIMUM #8AWG. CONTRACTOR IS RESPONSIBLE FOR VERIFICATION OF FINAL CIRCUIT LENGTHS AND CORRESPONDING WIRE SIZE TO ENSURE VOLTAGE DROP IS MAINTAINED WITHIN NEC LIMITS.
- ALL WORK SHALL BE PERFORMED AS REQUIRED BY APPLICABLE SECTION OF THE NATIONAL ELECTRICAL CODE (NEC), LATEST EDITION, AND ALL GOVERNING UCC BUILDING CODES AND REGULATIONS.
- PROVIDE GROUNDING AND BONDING FOR ELECTRICAL SYSTEMS. ELECTRICAL COMPONENTS, DEVICES AND ACCESSORIES SHALL BE LISTED AND LABELED AS DEFINED IN NFPA 70 AND COMPLY WITH UL 467 FOR GROUNDING AND BONDING MATERIALS AND EQUIPMENT. INSTALL INSULATED EQUIPMENT GROUNDING CONDUCTORS ALL FEEDERS AND BRACH CIRCUITS, LIGHTING CIRCUITS, RECEPTACLE CIRCUITS SINGLE PHASE MOTOR AND APPLIANCE BRANCH CIRCUITS, ARMORED AND METAL-CLAD CABLE RUNS AND AS REQUIRED BY NFPA 70.
- PROVIDE ALL HANGERS AND SUPPORTS FOR ELECTRICAL SYSTEMS, INCLUDING STEEL SLOTTED SUPPORT SYSTEMS, CONDUIT AND CABLE SUPPORT DEVICES, SUPPORTS FOR CONDUCTORS IN VERTICAL CONDUIT. HANGERS AND SUPPORTS SHALL HAVE A FLAME RATING OF CLASS 1 AND BE SELF-EXTINGUISHING ACCORDING TO ASTM D 635.

LIGHTING GENERAL NOTES:

- FURNISH AND INSTALL NEW EPANL COMPATIBLE OCCUPANCY SENSOR (WSXA) SWITCHES AND CEILING/SURFACE MOUNTED OCCUPANCY SENSORS (NCM-LARGE MOTION) AT LOCATIONS AS INDICATED ON ELECTRICAL - FLOOR PLAN. FURNISH AND INSTALL EPANL COMPATIBLE WALL DIMMING SWITCHES (SPOD) AT LOCATIONS AS INDICATED ON ELECTRICAL - FLOOR PLAN.
- THE CONTRACTOR SHALL VERIFY DIMENSIONS PRIOR TO INSTALLATION. CONTRACTOR SHALL COORDINATE ALL WORK WITH OTHER TRADES TO PROVIDE A COMPLETE AND OPERABLE LIGHTING SYSTEM. CONTRACTOR SHALL COORDINATE LOCATION OF FIXTURES, DEVICES, ETC. WITH OTHER TRADES IN ORDER TO AVOID INTERFERENCES.
- ALL WIRING SHALL BE TYPE "THHN/THHW" UNLESS OTHERWISE NOTED; MINIMUM WIRING SHALL BE #12. ALL WIRE SHALL BE COPPER. MINIMUM CONDUIT SIZE SHALL BE 3/4". SYSTEM AND EQUIPMENT GROUNDING CONTINUITY SHALL BE ASSURED AS REQUIRED BY APPLICABLE SECTIONS OF THE NEC.
- ALL CIRCUIT PROTECTIVE DEVICES SHALL HAVE THE REQUIRED RATING INTERRUPTING CAPACITY EQUAL TO OR GREATER THAN THE AVAILABLE SHORT-CIRCUIT CURRENT AT ITS SUPPLY TERMINAL.
- TYPICAL FIXTURE TAG "A" DENOTES FIXTURE TYPE TO BE CONNECTED TO NEW ELECTRICAL PANEL. PROVIDE ALL ACCESSORY LIGHTING CONTROLS AND MOUNTING HARDWARE AS REQUIRED FOR INSTALLATION OF NEW LIGHTING SYSTEMS.
- FURNISH AND INSTALL NEW WEATHERPROOF DUSK TO DAWN ELECTRIC PHOTOCELL SENSOR FOR EXTERIOR LIGHTING CIRCUITRY AND FIXTURES AT LOCATIONS AS INDICATED ON ELECTRICAL - FLOOR PLAN.

RECEPTACLE & SWITCH MOUNTING HEIGHTS	
Office Receptacles and Telephone	18"
All switches and other receptacles	42"

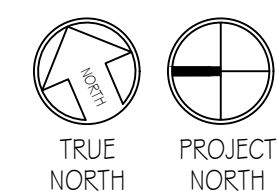


DATA / IT:

- FURNISH AND INSTALL EMT OR PVC CONDUIT IN WALL CAVITY AND/OR SLABS AS APPLICABLE. TERMINATE THE CONDUIT AND/OR CHASES INTO THE WORK BOXES. CONDUITS AND CHASES MAY TERMINATE ABOVE WALL ASSEMBLY OR TO DESIGNATED WORK ACCESS AREA.
- INSTALL CAT6 CABLING FOR ALL IT AND PHONE LINES. PGC IS TO DESIGNATE LOCATIONS OF WHICH WORK BOXES ARE TO RECEIVE DATA OR PHONE PORT FACE PLATES. ALL CABLING HOME-RUNS ARE TO BE ROUTED APPROPRIATELY THROUGH CONDUITS AND CABLE TRAYS AND TERMINATED THROUGH A CHASE IN THE MECHANICAL ROOM WITH 10' SPARE CABLING (USED IN FINAL CONNECTIONS).
- WHERE ADJACENT DATA PORTS ARE DENOTED PER THE DRAWINGS, DOUBLE PORTS ARE ALLOWABLE.
- ALL DATA PORTS ARE TO BE LABELED WITH A NUMERICAL SYSTEM AND THE HOME-RUN CABLING IS TO BE LABELED CORRESPONDINGLY FOR FINAL CONNECTIONS.

FIRST FLOOR PLAN - ELECTRICAL

SCALE: 1/4" = 1'-0"



PENNSYLVANIA GAME COMMISSION		
STATE GAME LANDS #214	NORTH SHENANGO TWP.	CRAWFORD CO.
NEW 40' x 80' WATERFOWL CHECK BUILDING		
ELECTRICAL FLOOR PLAN, SCHEDULES & DETAILS		
REVISIONS		PROJECT NO. PGC-214-21-02
△ REV 1 12.15.23		DRAWN BY: CLOUSER/SPOTTS
△		DATE: 2/27/2023
△		SHEET NO. E-1