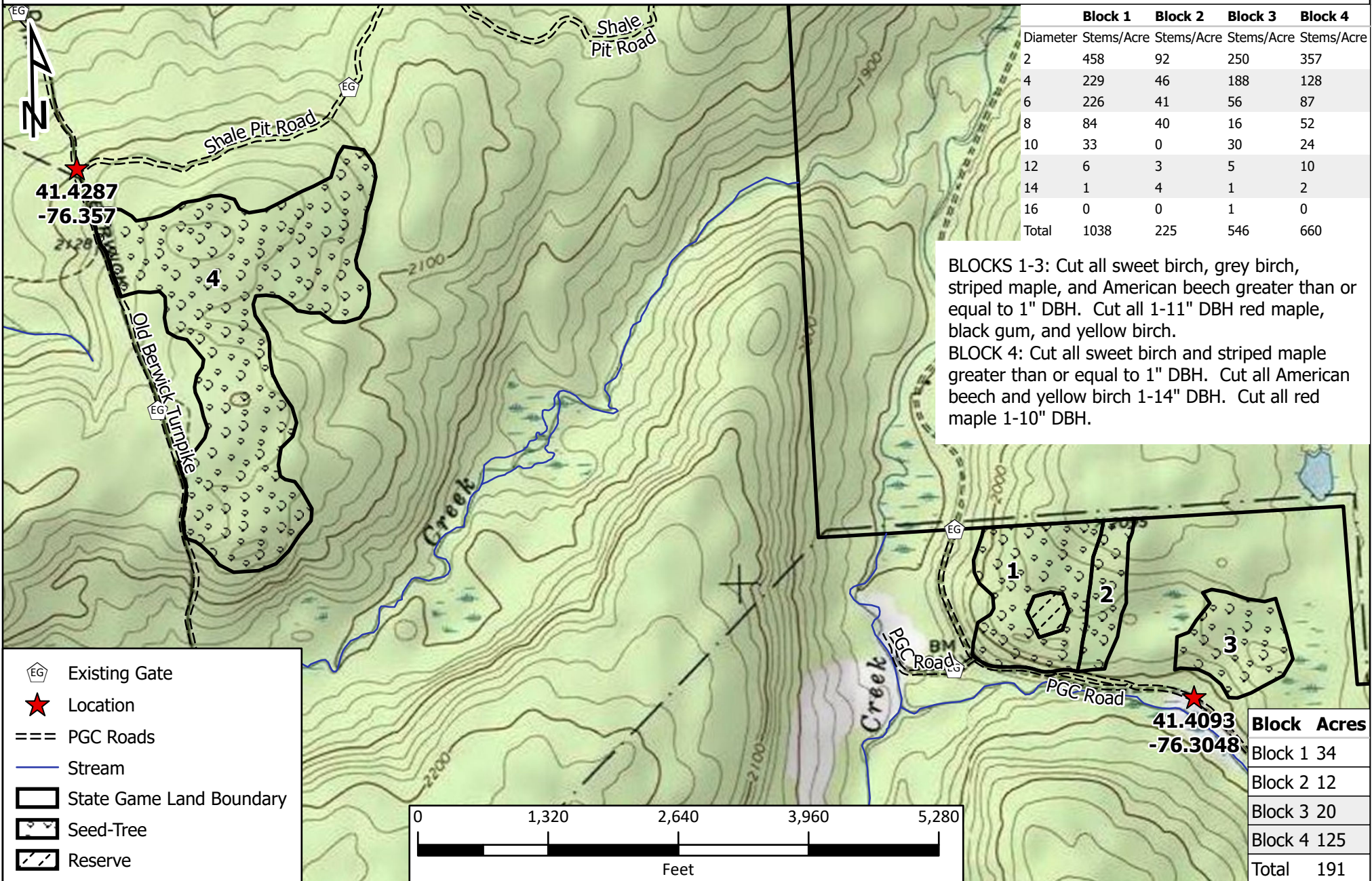


SGL 013
 Sullivan County
 Cherry & Colley Twps.
 Forester: E.Delp

Burnt Foot Cutting Project

013-2022-05



	Block 1	Block 2	Block 3	Block 4
Diameter	Stems/Acre	Stems/Acre	Stems/Acre	Stems/Acre
2	458	92	250	357
4	229	46	188	128
6	226	41	56	87
8	84	40	16	52
10	33	0	30	24
12	6	3	5	10
14	1	4	1	2
16	0	0	1	0
Total	1038	225	546	660

BLOCKS 1-3: Cut all sweet birch, grey birch, striped maple, and American beech greater than or equal to 1" DBH. Cut all 1-11" DBH red maple, black gum, and yellow birch.

BLOCK 4: Cut all sweet birch and striped maple greater than or equal to 1" DBH. Cut all American beech and yellow birch 1-14" DBH. Cut all red maple 1-10" DBH.

Block	Acres
Block 1	34
Block 2	12
Block 3	20
Block 4	125
Total	191