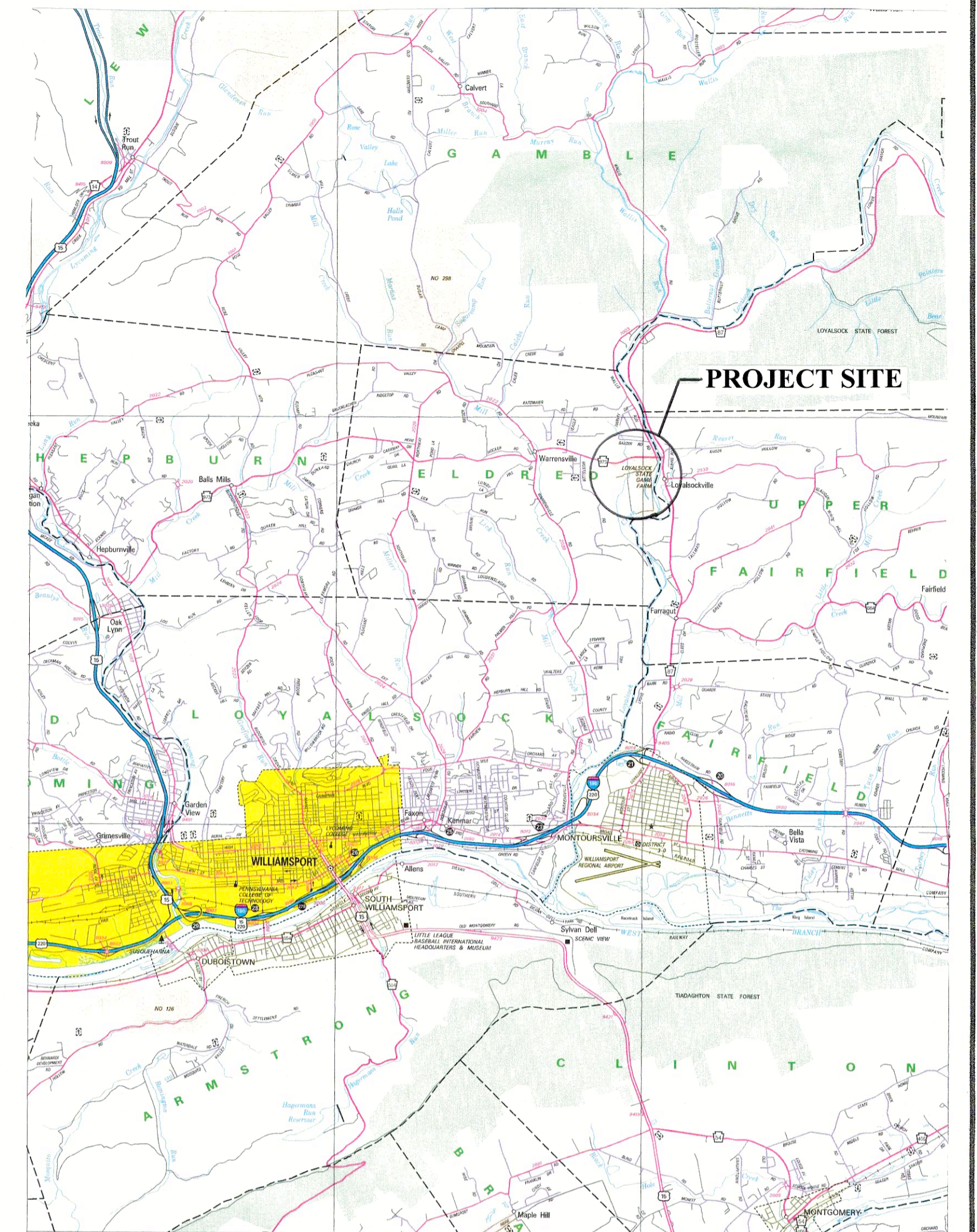


SITE PLAN

Scale: 1 in. = 400 ft.

WORK AREA DETAIL

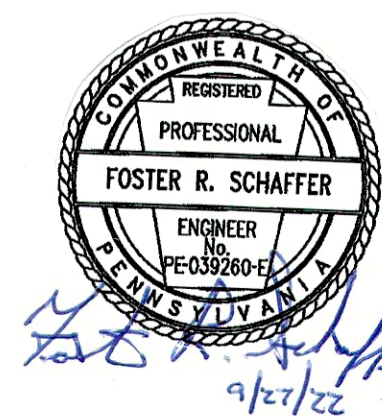
Scale: 1/4 in. = 1 ft.



LOCATION MAP

PROJECT NOTES

1. The scope of this project is to furnish and install propane fired emergency generators at four brooder houses at the Loyalsock Game Farm. This includes all wiring and conduits including automatic transfer switches.
2. The Contractor is responsible for coordination with the local electric company. This includes any inspections required by the utility.
3. The emergency generators are to be installed on existing concrete pads.
4. The PA Game Commission will arrange for connection of propane lines from the existing tanks to the new emergency generators. This is not part of the contract.
5. Damage to existing buildings, parking lots and farm facilities caused by construction operations must be immediately repaired by the Contractor.
6. Clean all equipment and vehicles thoroughly (especially the undercarriage and wheels) before they are brought to the site to prevent the spread of invasive species.
7. All vehicles are required to be disinfected each time they enter the game farm. The PA Game Commission has an automatic tire washing station at the entrance to the game farm.



PENNSYLVANIA GAME COMMISSION		
LOYALSOCK GF	ELDPRED TWP.	LYCOMING CO.
BROODER HOUSE EMERGENCY GENERATORS		
LOCATION MAP, SITE PLAN, WORK AREA DETAIL AND NOTES		
REVISIONS		
△	PROJECT NO.	PGC-LGF-22-02
△	DRAWN BY:	SS
△	DATE:	9/27/22
△	SHEET NO.	1 OF 1