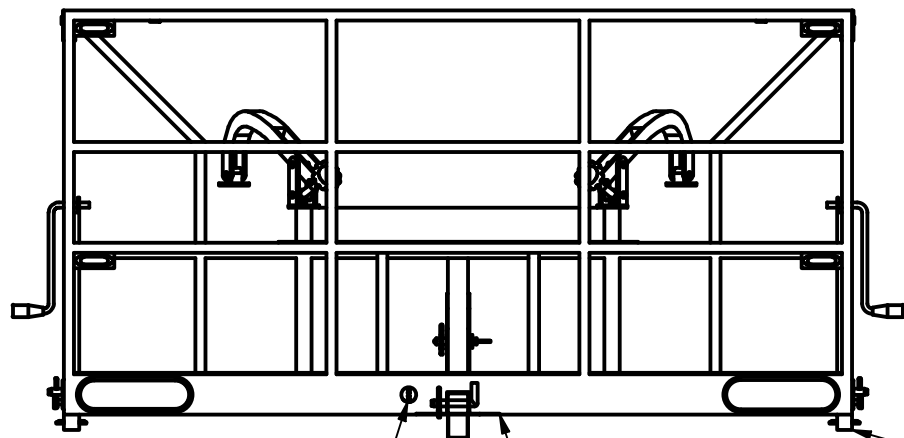
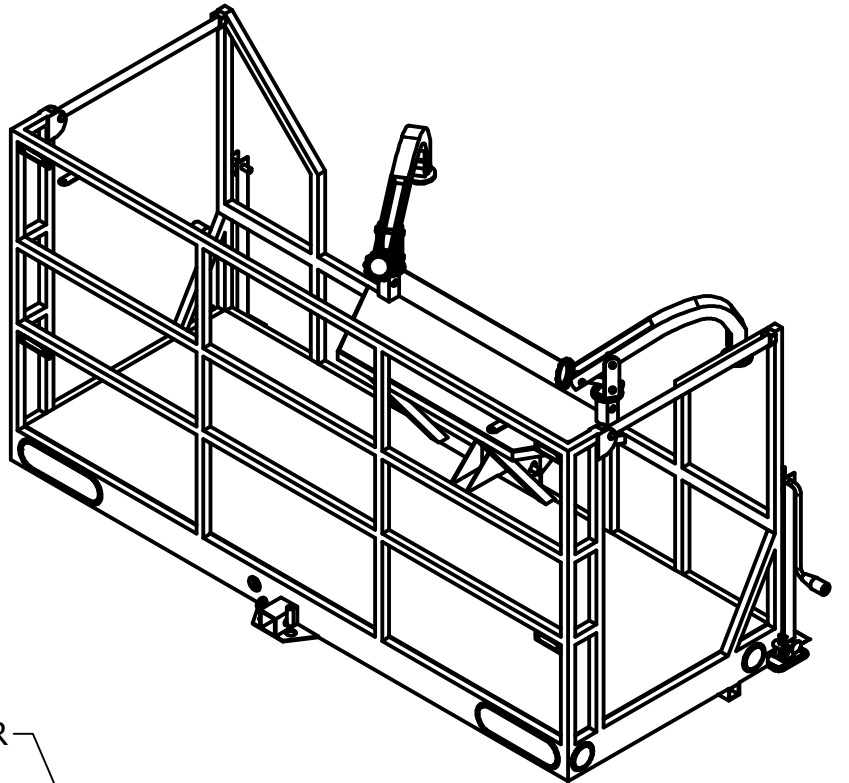


5/8" x 4" HITCH PIN WITH PIN CLIP — SAFETY CABLE ANCHOR POINT

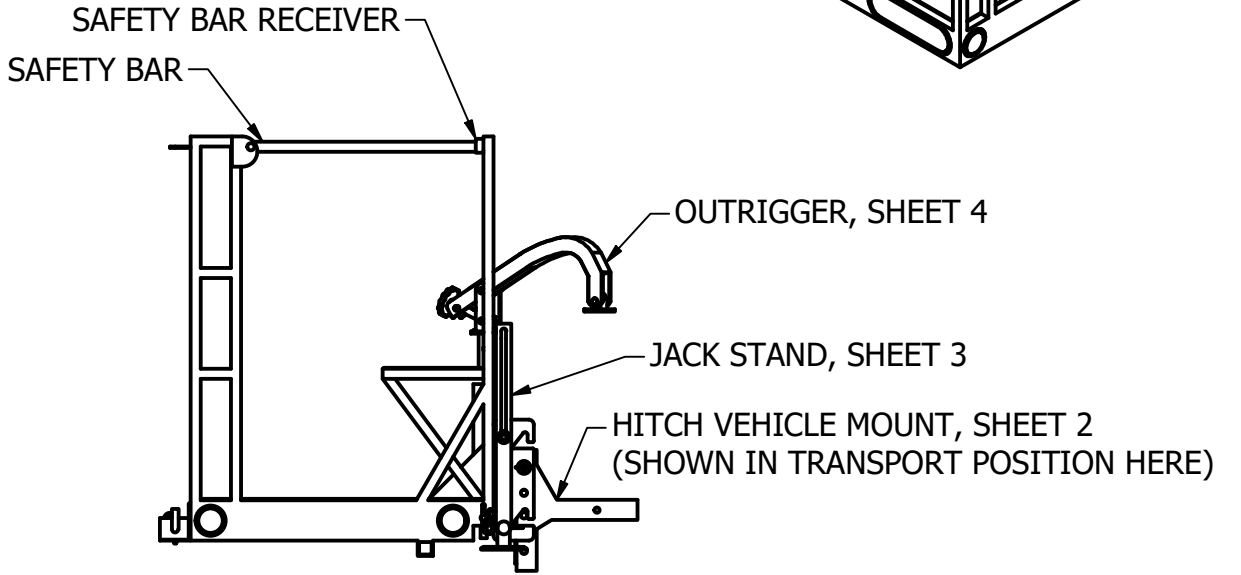
PHYSICAL SPECIFICATIONS	
WIDTH	78"
DEPTH	30"
HEIGHT	40"
WEIGHT (APPROXIMATE)	375LB
MAX WEIGHT CAPACITY	350LB

TOW CAPACITY TO NOT EXCEED 1,300LB OR EXCEED TONGUE WEIGHT OF 200LB



4 PIN CONNECTOR — CENTER JACK STAND RECEIVER AND TOW HITCH RECEIVER

SAFETY BASKET RECEIVES ELECTRICAL POWER VIA 7 WAY ROUND PIN CONNECTOR (SEE EQN-80A & EQN-80B)

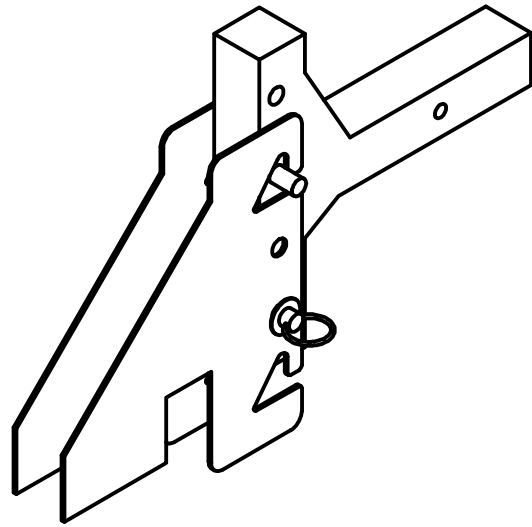


JACK STAND RECEIVER

DRAWN	LWB	6/22/2022	PA DEPARTMENT OF TRANSPORTATION	
CHECKED			TITLE	
QA			HITCH MOUNTED SAFETY BASKET	
MFG			SIZE	DWG NO
APPROVED			B	EQN-1091
			SCALE	REV
			1 / 19	
			SHEET 1 OF 4	

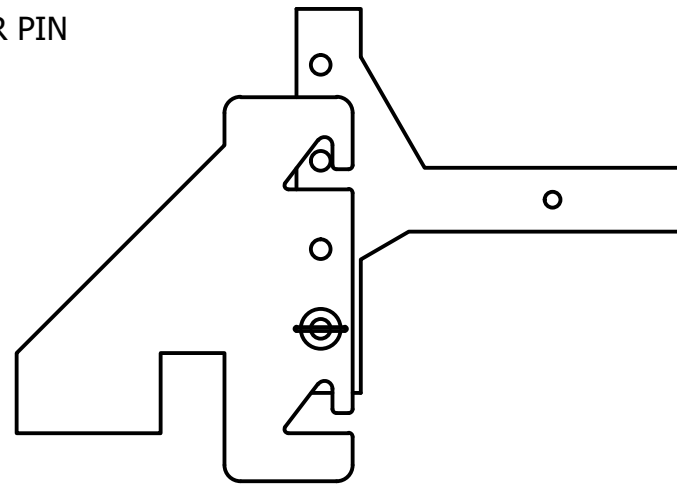
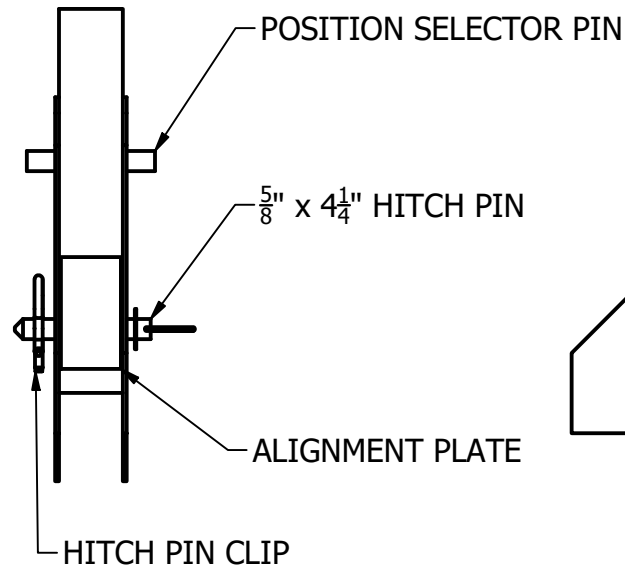
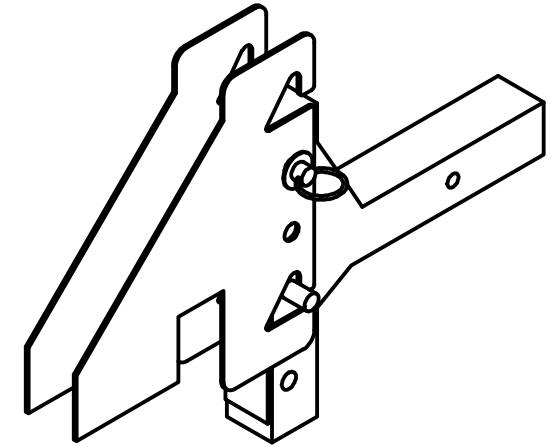
HITCH VEHICLE MOUNT IN WORKING POSITION

FOR TRAVEL TO AND FROM WORK ZONES

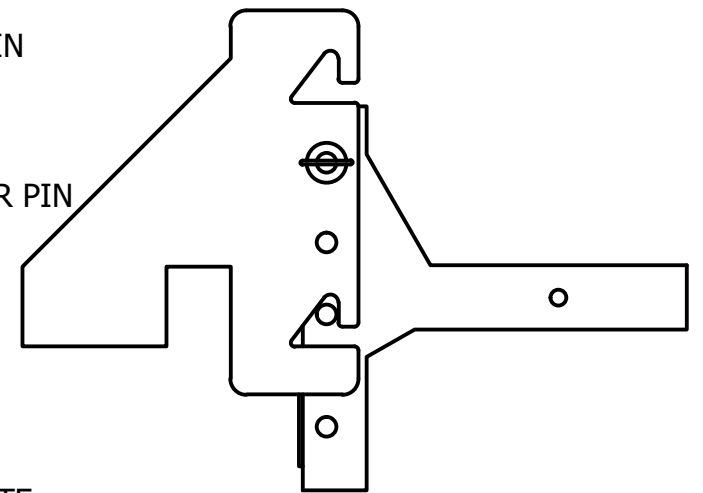
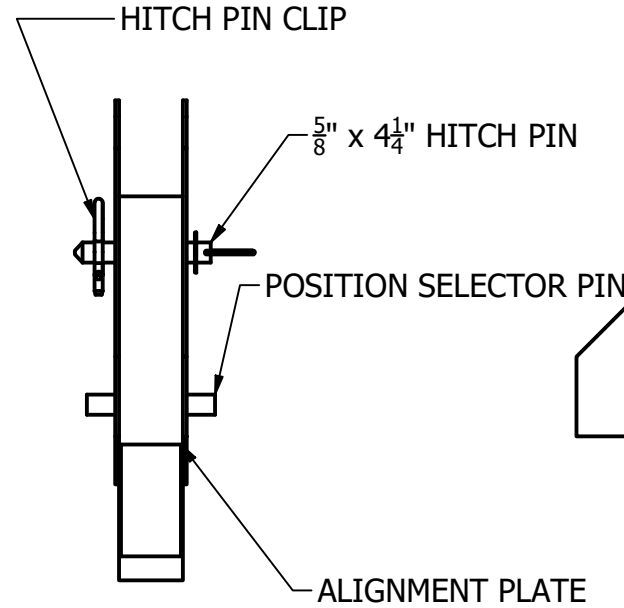


HITCH VEHICLE MOUNT IN TRANSPORT POSITION

FOR WORKING IN A WORK ZONE



ATTACHED TO VEHICLE BY 2" RECEIVER
 SECURED WITH $\frac{1}{2}$ " x $\frac{1}{4}$ " HITCH PIN AND A HITCH PIN CLIP



DRAWN		PA DEPARTMENT OF TRANSPORTATION		
LWB	6/22/2022	TITLE		
CHECKED		HITCH MOUNTED SAFETY BASKET		
QA		SIZE	DWG NO	REV
MFG		B	EQN-1091	
APPROVED		SCALE	1/6	SHEET 2 OF 4

4

3

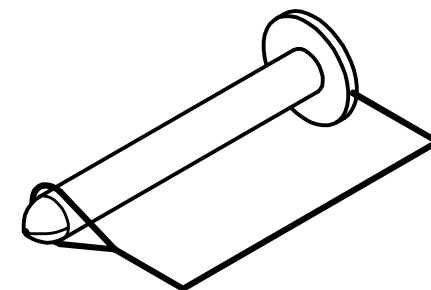
2

1

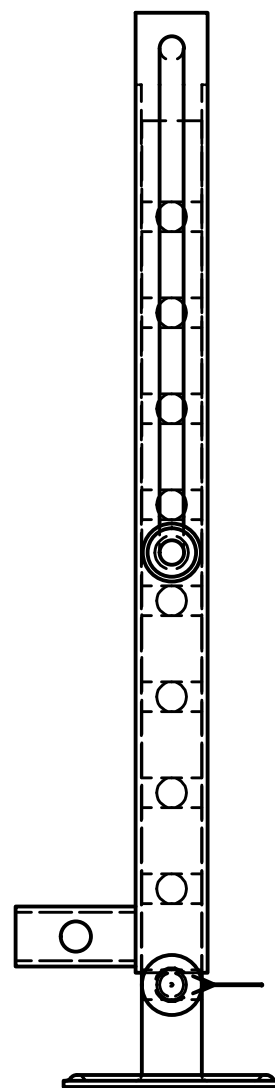
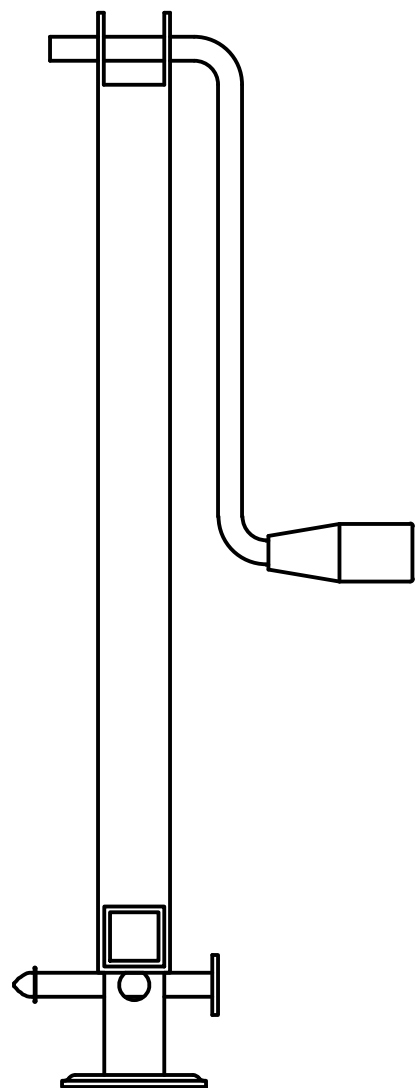
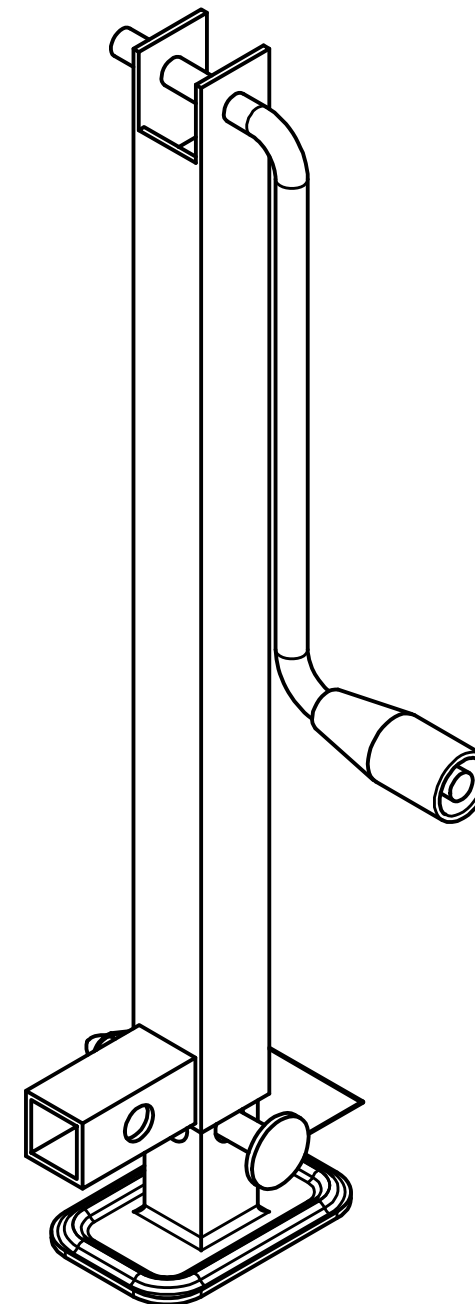
JACK STAND

SAFETY BASKET IS EQUIPPED WITH THREE JACK STANDS, THREE JACK STAND RECEIVERS, AND ONE JACK STAND STORAGE RECEIVER.

JACK STANDS ARE SECURED TO BASKET WITH $\frac{1}{2}$ " x $3\frac{1}{5}$ " HITCH PINS AND PIN CLIPS



1/2" x 4" HITCH PIN WITH SPRING CLIP



DRAWN	LWB	6/22/2022	PA DEPARTMENT OF TRANSPORTATION	
CHECKED			TITLE	
QA			HITCH MOUNTED SAFETY BASKET	
MFG			SIZE	DWG NO
APPROVED			B	EQN-1091
			SCALE	REV
			1/4	
			SHEET 3 OF 4	

4

3

2

1

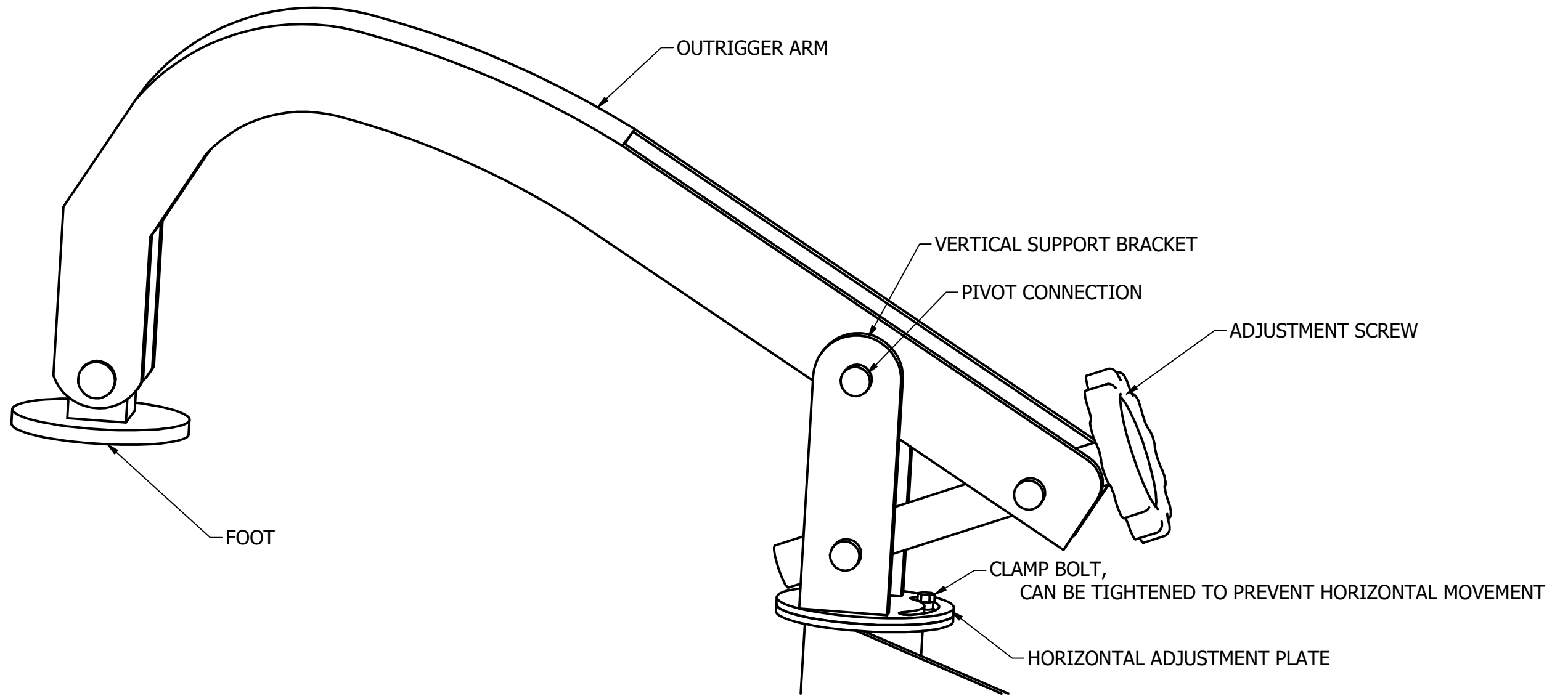
B

B

A

A

OUTRIGGER



DRAWN		PA DEPARTMENT OF TRANSPORTATION		
LWB	6/22/2022	TITLE		
CHECKED		HITCH MOUNTED SAFETY BASKET		
QA		SIZE	DWG NO	REV
MFG		B	EQN-1091	
APPROVED		SCALE	1/2	SHEET 4 OF 4