

PENNSYLVANIA GAME COMMISSION

PROJECT NO. PGC-159-20-01

STATE GAME LANDS #159

NEW 32' x 64' STORAGE BUILDING

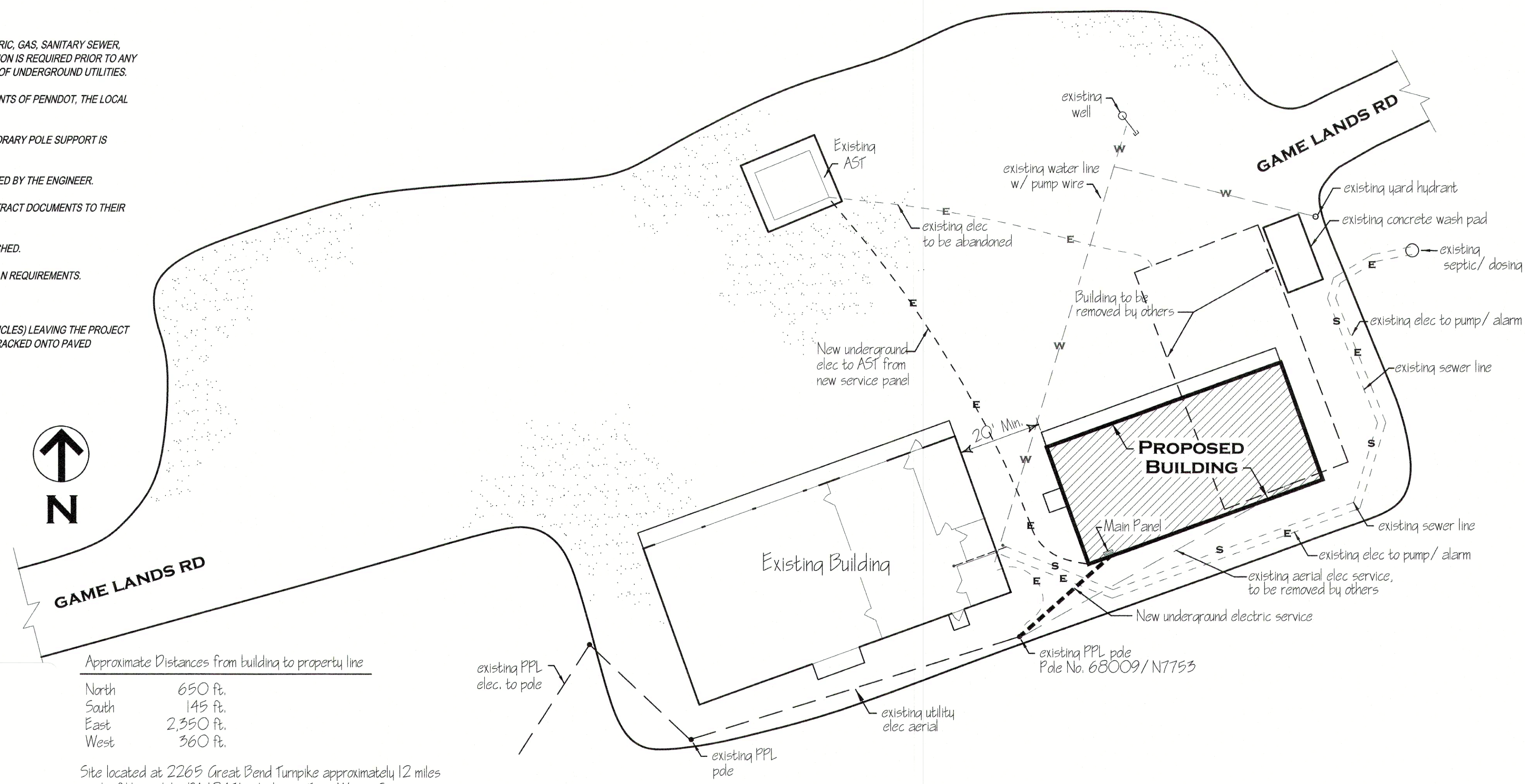
LEBANON TOWNSHIP, WAYNE COUNTY, PENNSYLVANIA

CONTRACT NO. 1: GENERAL CONSTRUCTION
 CONTRACT NO. 2: ELECTRICAL CONSTRUCTION

JANUARY 2021

GENERAL NOTES:

- UTILITY LINE LOCATIONS SHOWN ON THE DRAWINGS ARE APPROXIMATE. UNDERGROUND TELEPHONE, ELECTRIC, GAS, SANITARY SEWER, WATER AND STORMWATER DRAINAGE LINES MAY BE PRESENT AT SOME WORK LOCATIONS. FIELD VERIFICATION IS REQUIRED PRIOR TO ANY CONSTRUCTION. CONTACT PA ONE CALL AND COMPLY WITH ACT 287 (AS AMENDED) REGARDING LOCATIONS OF UNDERGROUND UTILITIES.
- ALL WORK WITHIN THE PUBLIC RIGHT-OF-WAY SHALL BE CONDUCTED IN ACCORDANCE WITH THE REQUIREMENTS OF PENNDOT, THE LOCAL MUNICIPALITY AND THE CONTRACT DOCUMENTS.
- CONTRACTOR SHALL COORDINATE WITH AFFECTED UTILITY COMPANIES IN THE EVENT ITEMS SUCH AS TEMPORARY POLE SUPPORT IS REQUIRED. THIS WORK SHALL BE COMPLETED AT NO ADDITIONAL COST TO THE OWNER.
- EXISTING DRAINAGE FACILITIES SHALL REMAIN INTACT DURING CONSTRUCTION, UNLESS OTHERWISE DIRECTED BY THE ENGINEER.
- ALL AREAS DISTURBED BY THE CONSTRUCTION WORK SHALL BE RESTORED IN ACCORDANCE WITH THE CONTRACT DOCUMENTS TO THEIR ORIGINAL CONDITION OR BETTER.
- ALL DISTURBED AREAS NOT RECEIVING OTHER SURFACE TREATMENT SHALL BE GRADED, SEEDED, AND MULCHED.
- CONTRACTOR SHALL REFER TO CONTRACT DOCUMENTS FOR SOIL EROSION & SEDIMENTATION CONTROL PLAN REQUIREMENTS.
- MAINTAIN ACCESS TO DRIVEWAYS AND ENTRANCES LOCATED ALONG THE PROJECT.
- THE CONTRACTOR SHALL ENSURE THAT ALL CONSTRUCTION VEHICLES (INCLUDING MATERIAL SUPPLIER VEHICLES) LEAVING THE PROJECT AREA HAVE MUD BUILDUP REMOVED FROM THE TIRES BEFORE EXITING ONTO PAVED ROADWAYS. ALL MUD TRACKED ONTO PAVED ROADWAYS SHALL BE IMMEDIATELY REMOVED FROM THE ROADWAY.



Approximate Distances from building to property line

North	650 ft.
South	145 ft.
East	2,350 ft.
West	360 ft.

Site located at 2265 Great Bend Turnpike approximately 12 miles north of Honesdale, PA 18431 in Lebanon Twp., Wayne County.

SITE PLAN
 SCALE: 1" = 20'

DRAWING INDEX

C-1	COVER SHEET & BUILDING SITE PLAN
A-1	BUILDING FLOOR PLAN & ELEVATIONS
A-2	BUILDING SECTIONS, DETAILS & SCHEDULES
E-1	ELECTRICAL FLOOR PLAN, SCHEDULES & DETAILS

UCC BUILDING APPROVAL

These plans are deemed in compliance with the Pennsylvania Construction Code Law (1999, November 10, P.L. 491, NO. 45) and its regulations.

Plan Code: **B** File Number: **541462** Permit Num: **202100012**

Constr Type: **VB** Story Height: **1** BSMT:

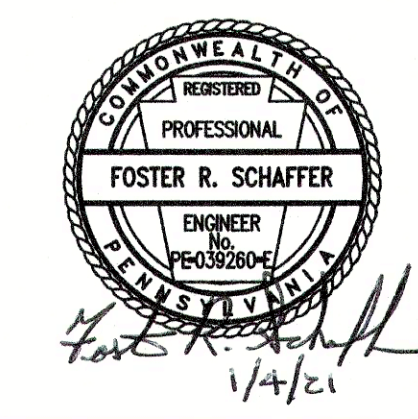
Occupancy(s): **S1**

TYPE REV	BLDG	ELEC	MECH	PLUM	ENERGY	ACCESS
	X	X	X	X	X	X

Fire Protection: ELY) Number of Sheets: 4
 Special Inspections: Code Edition: 2015/2018 Date: 1/8/2021
 PRIMARY EXAMINER: Hoskin, Terry E



Handwritten initials/signature.



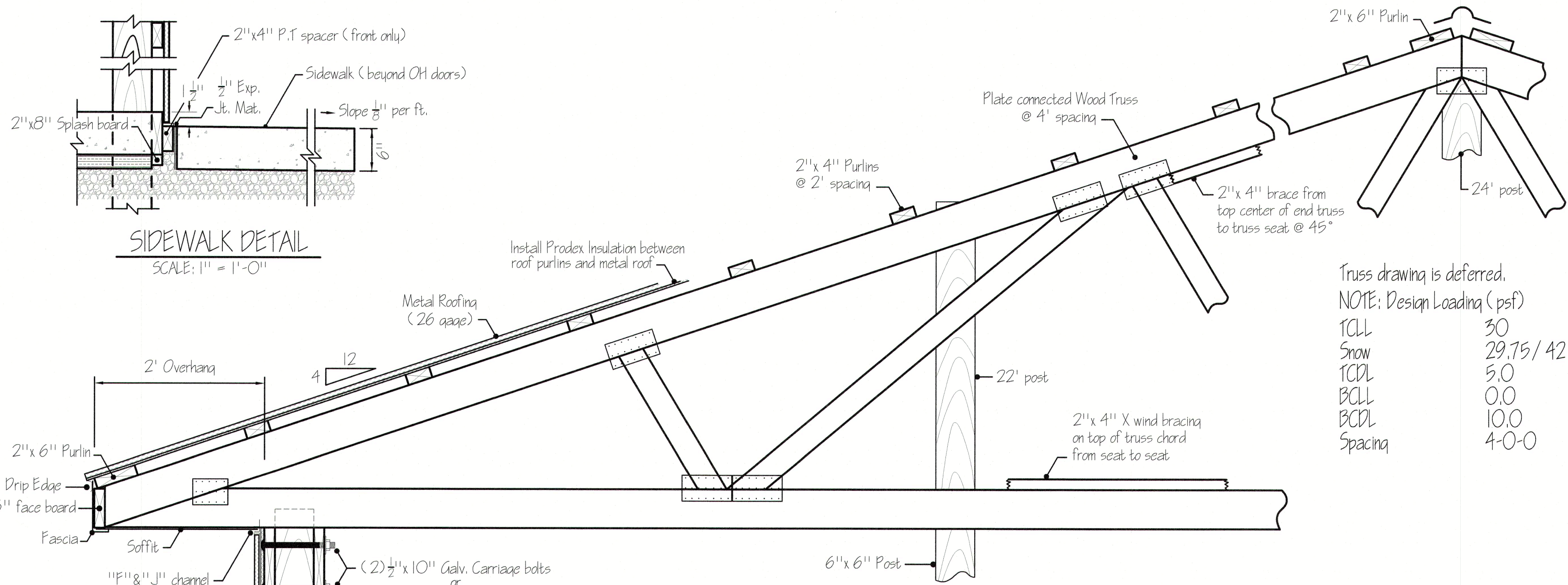
PENNSYLVANIA GAME COMMISSION

STATE GAME LANDS #159 | LEBANON TWP. | WAYNE CO.

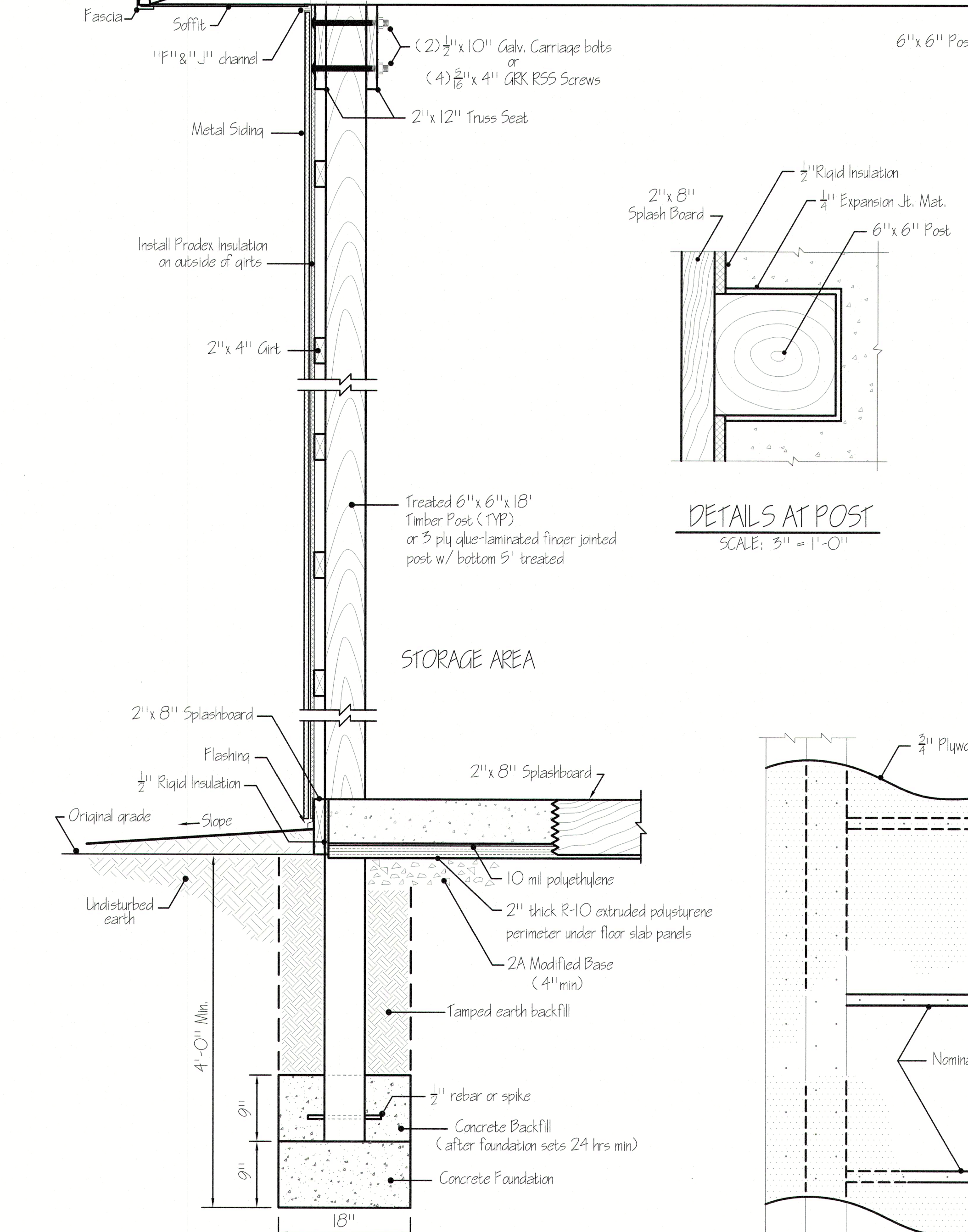
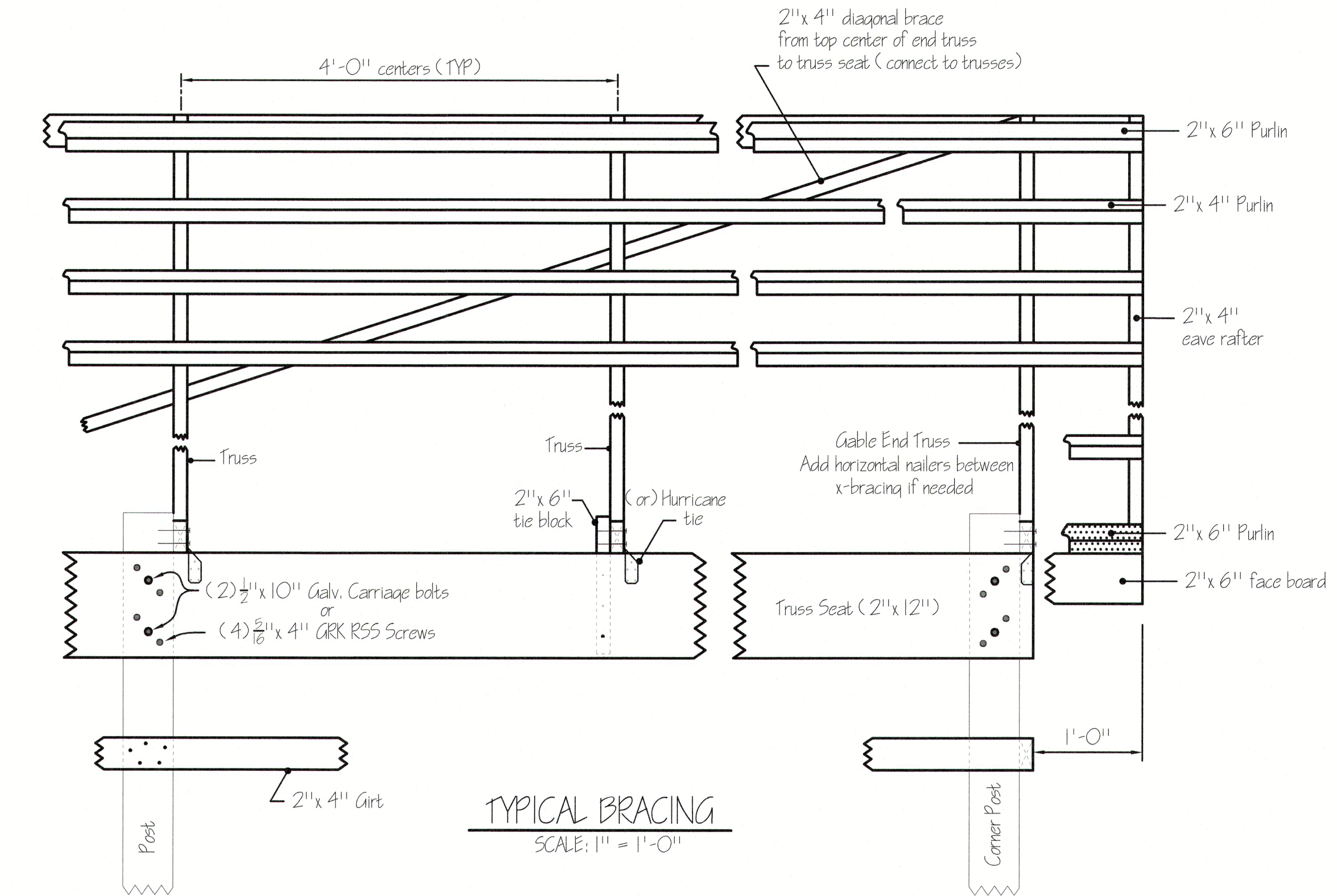
NEW 32' x 64' STORAGE BUILDING

COVER SHEET AND BUILDING SITE PLAN

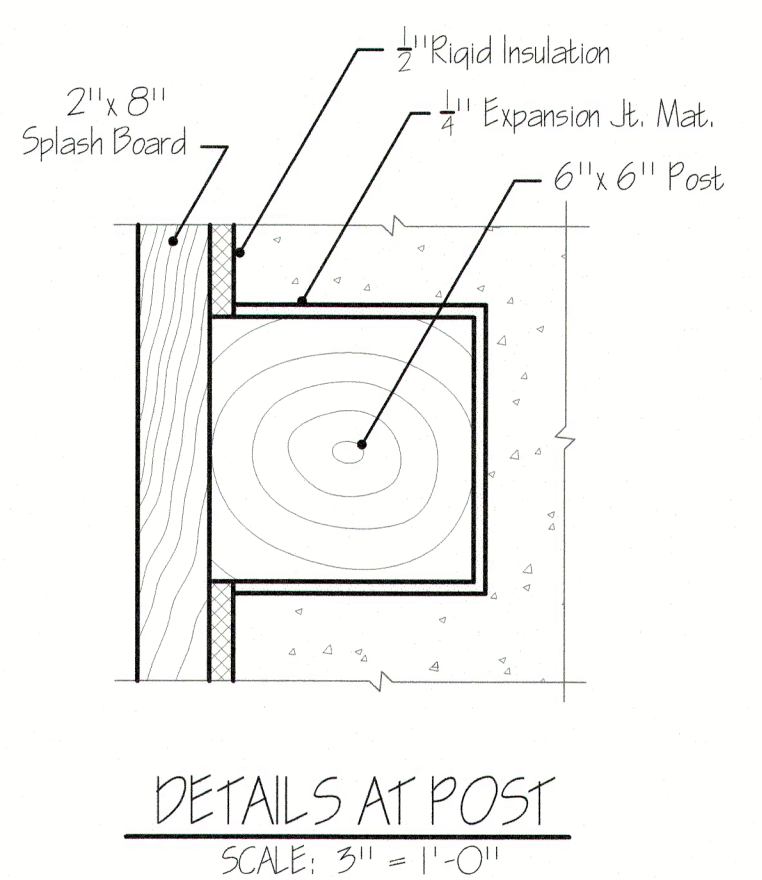
REVISIONS	PROJECT NO.	PGC-159-20-01
▲	DRAWN BY:	C. CLOUSER
▲	DATE:	1/4/2021
▲	SHEET NO.	C-1



Truss drawing is deferred.
 NOTE: Design Loading (psf)
 TOLL 30
 Snow 29.75/42
 TCDL 5.0
 BCLL 0.0
 BCDL 10.0
 Spacing 4-0-0



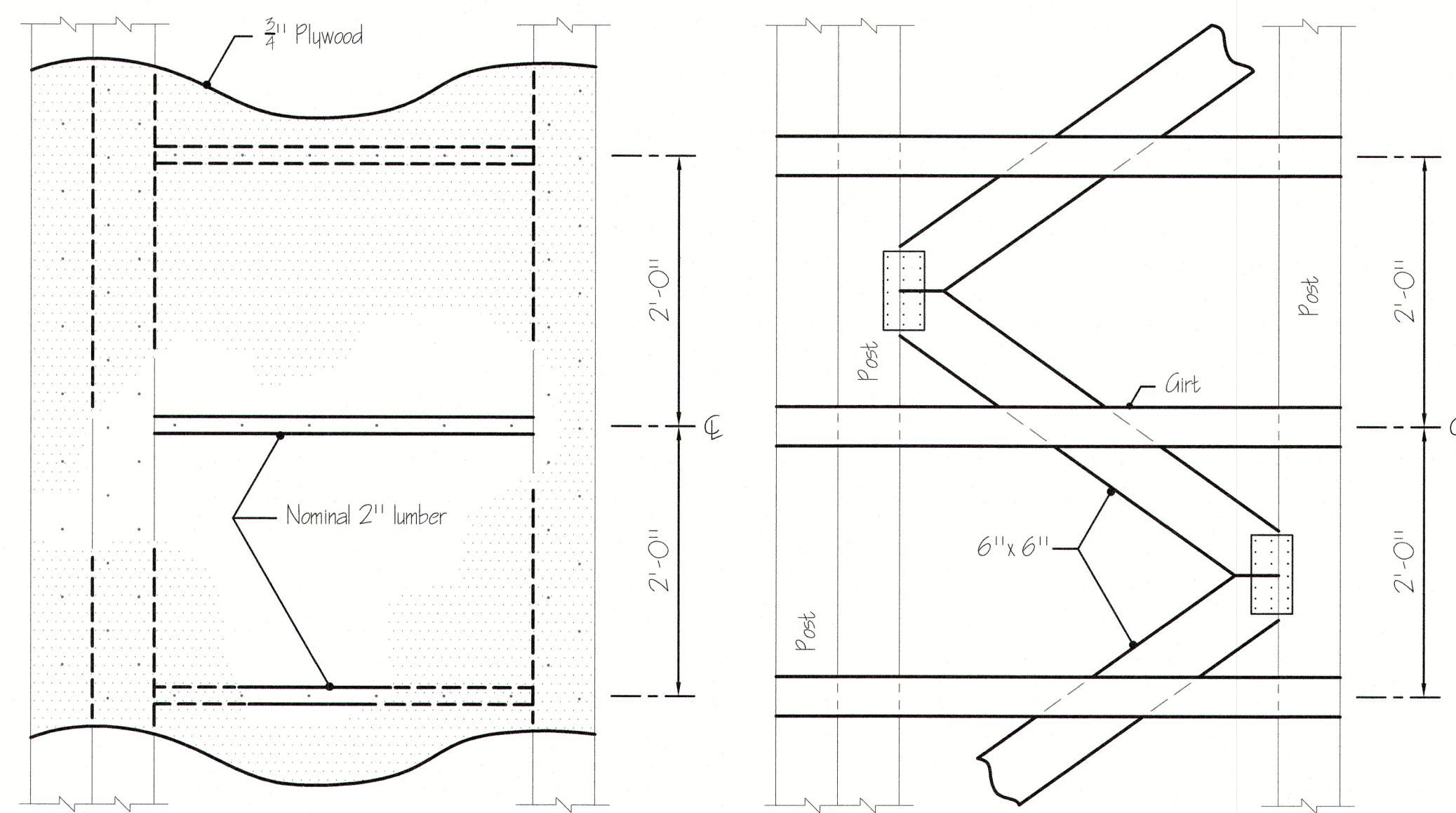
CROSS SECTION DETAIL
 SCALE: 1" = 1'-0"



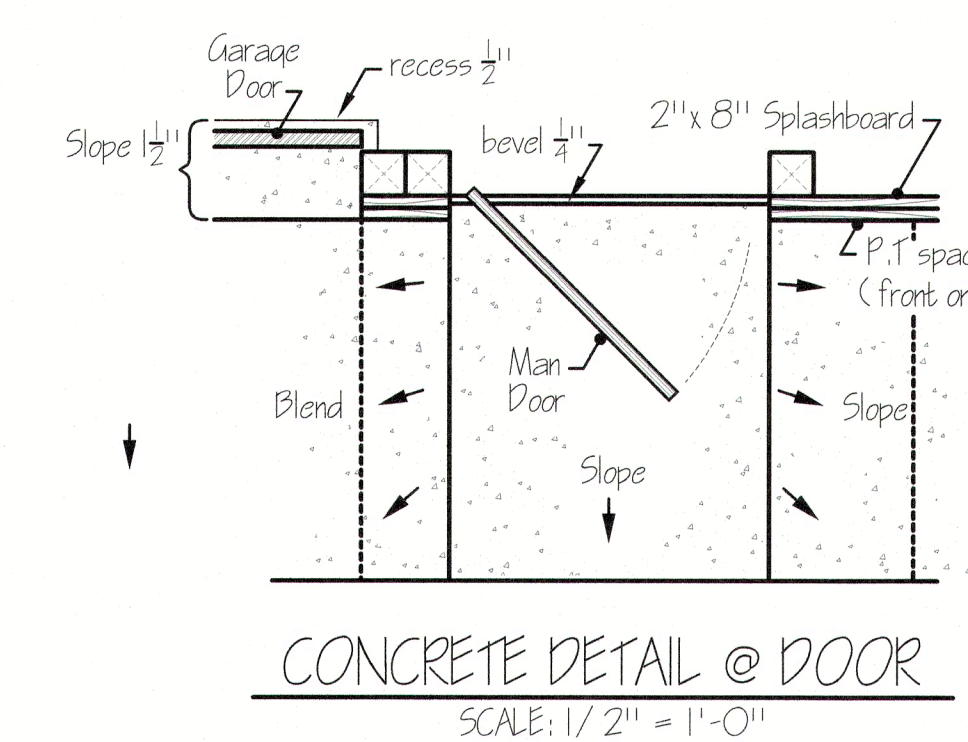
DETAILS AT POST
 SCALE: 5" = 1'-0"

Mark	Type	W	H	T	Hand	Qty	Remarks
A	1	3'-0"	7'-0"	1-3/4"	RHR	1	Insulated Core w/ glass, Panic Bolt, Closure
B	2	3'-0"	7'-0"	1-3/4"	LHR	1	Insulated Core w/ glass, Panic Bolt, Closure
C	3	6'-0"	7'-0"	1-3/4"		1	Insulated Core w/ lockset & Flush Bolts
D	O.H.	12'-0"	12'-0"		See Specs.	4	Insulated Section Overhead Door

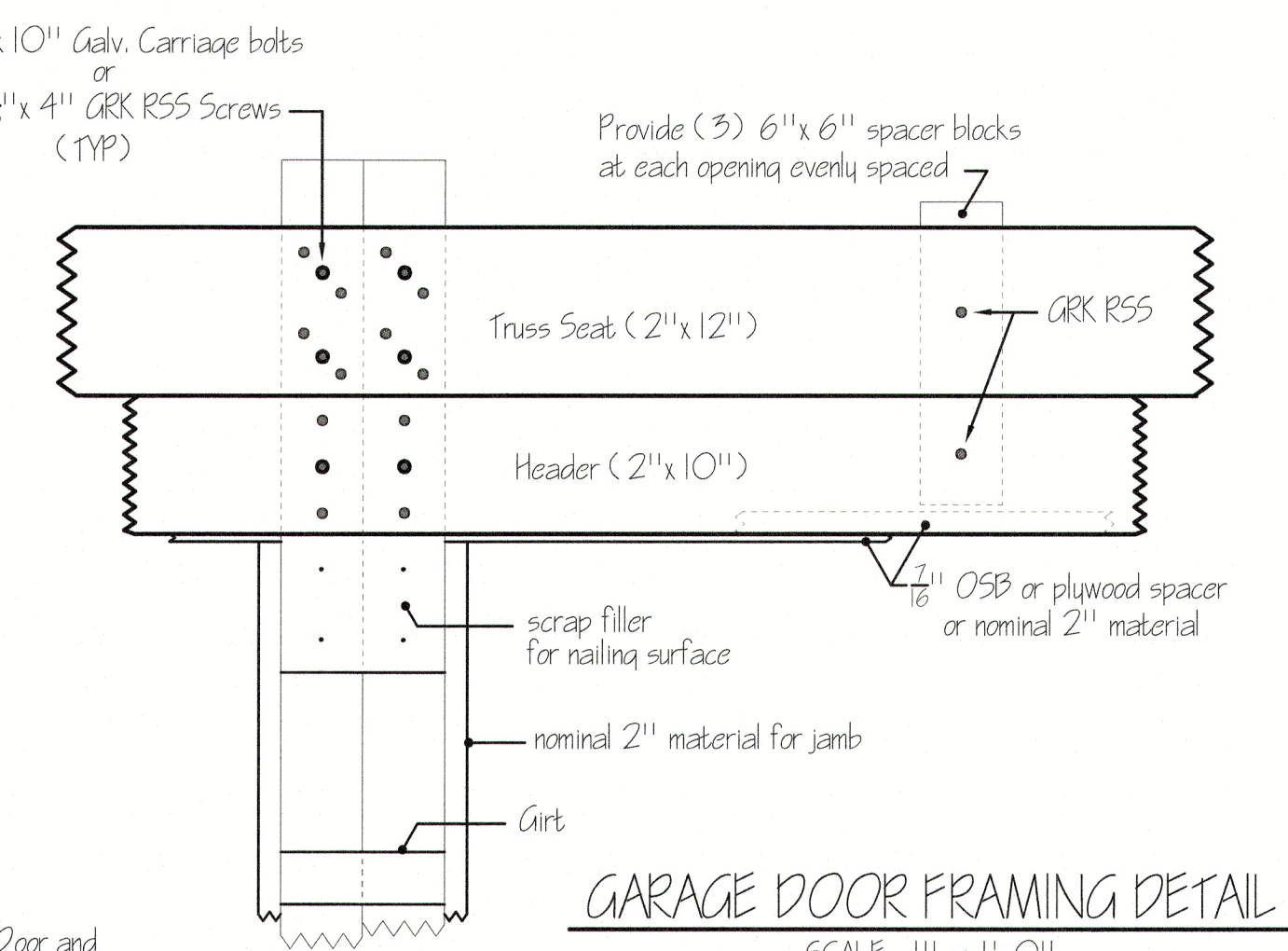
DOOR SCHEDULE



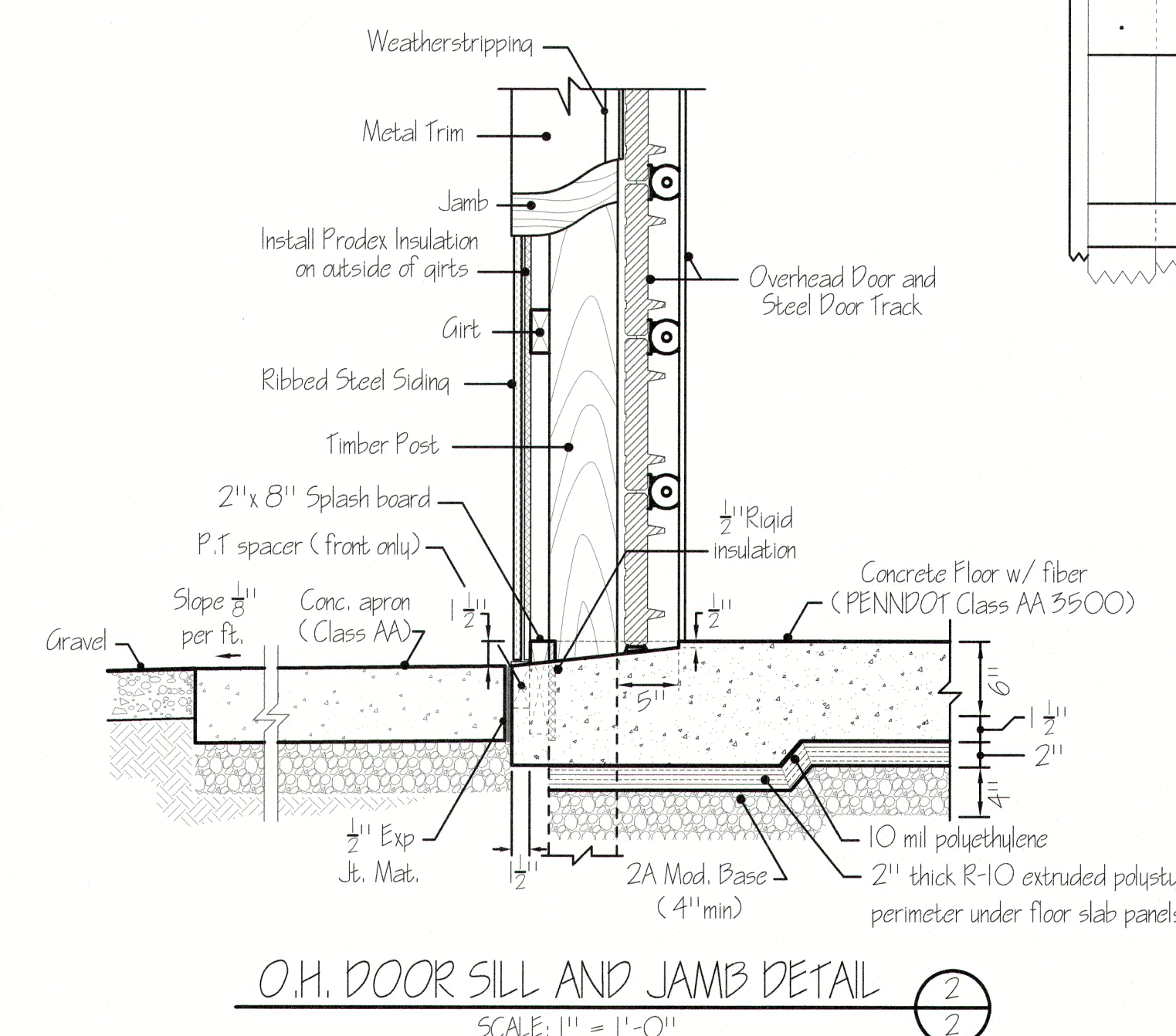
PLYWOOD BRACING OR 6" x 6" BRACING
 SCALE: 1" = 1'-0" (FRONT CORNERS ONLY)



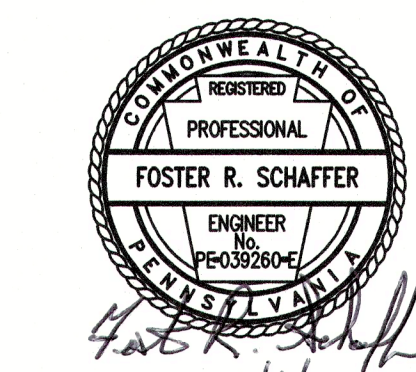
CONCRETE DETAIL @ DOOR
 SCALE: 1/2" = 1'-0"



GARAGE DOOR FRAMING DETAIL
 SCALE: 1" = 1'-0"



O.H. DOOR SILL AND JAMB DETAIL
 SCALE: 1" = 1'-0"



PENNSYLVANIA GAME COMMISSION

STATE GAME LANDS #159 LEBANON TWP. WAYNE CO.

NEW 32' x 64' STORAGE BUILDING

BUILDING SECTIONS & DETAILS

REVISIONS	PROJECT NO.	PGC-159-20-01
▲	DRAWN BY:	C. CLOUSER
▲	DATE:	1/4/2021
▲	SHEET NO.	A-2

LOAD CENTER		All exposed wiring in min 3/4" conduit	
VOLTAGE: 240/120V			
SERVICE FEEDER SIZE: 2-#4/O & 1-#2 AL			
Circuit No.	Circuit Breakers Poles / Amps	200 AMP Main Service Breaker	Wiring No./ Size / Conduit Size
1	1	20	Baseboard Heating Unit #1 3 - #10 1"
2	1	20	Baseboard Heating Unit #2 3 - #10 1"
3	2	50	220 Volt Welding Outlet 3 - #6 1-1/4"
4	1	20	Heated Storage Room Receptacles 3 - #12 3/4"
5	1	20	Storage Receptacles, East side 3 - #12 3/4"
6	1	20	Storage Receptacles, West side 3 - #12 3/4"
7	1	20	Storage Lighting, West side 3 - #12 3/4"
8	1	20	Storage Lighting, East side 3 - #12 3/4"
9	1	20	Heated Storage Room Lighting 3 - #12 3/4"
10	1	20	Exterior Lighting 3 - #12 3/4"
11	1	20	Exit and Emergency Lighting 3 - #12 3/4"
12	1	20	Service Panel Receptacle 3 - #12 3/4"
13	1	20	ATS Fuel Tank Monitoring System 3 - #12 1"
14	1	20	ATS Fuel Pump 3 - #10 1"
15-42			2 Spare Spaces

ELECTRICAL WIRING SYMBOLS

- ⊖ Receptacle Protected w/ GFI Breaker
- ⊕ Duplex Outlet, Split Circuit
- ⊕ Duplex Outlet
- ⊕ 220 Volt Welding Outlet (Verify type & location with PGC crew)
- ⊖ Home Run / Circuit #
- ⊖ Junction Box
- ⊖ Photo Cell
- ⊖ Exit Lighting w/ batteries
- ⊖ Switch
- ⊖ Switch, 3 Way
- ⊖ Baseboard Heating Unit, 1250 watts, see Specifications

GENERAL ELECTRICAL NOTES:

- FURNISH AND INSTALL SOLID COPPER CONDUCTORS AS SPECIFIED; NO ALUMINUM AND NO STRANDED. MC CABLE IS APPROVED FOR ALL HOME RUN CIRCUITS IF NEATLY INSTALLED.
- ALL CONDUCTORS FOR 120V CIRCUITS OVER 100' IN LENGTH SHALL BE MINIMUM #10AWG. ALL CONDUCTORS FOR 120V CIRCUITS OVER 150' IN LENGTH SHALL BE MINIMUM #8AWG. CONTRACTOR IS RESPONSIBLE FOR VERIFICATION OF FINAL CIRCUIT LENGTHS AND CORRESPONDING WIRE SIZE TO ENSURE VOLTAGE DROP IS MAINTAINED WITHIN NEC LIMITS.
- ALL WORK SHALL BE PERFORMED AS REQUIRED BY APPLICABLE SECTION OF THE NATIONAL ELECTRICAL CODE (NEC), LATEST EDITION, AND ALL GOVERNING UCC BUILDING CODES AND REGULATIONS.
- PROVIDE GROUNDING AND BONDING FOR ELECTRICAL SYSTEMS. ELECTRICAL COMPONENTS, DEVICES AND ACCESSORIES SHALL BE LISTED AND LABELED AS DEFINED IN NFPA 70 AND COMPLY WITH UL 467 FOR GROUNDING AND BONDING MATERIALS AND EQUIPMENT. INSTALL INSULATED EQUIPMENT GROUNDING CONDUCTORS ALL FEEDERS AND BRANCH CIRCUITS, LIGHTING CIRCUITS, RECEPTACLE CIRCUITS SINGLE PHASE MOTOR AND APPLIANCE BRANCH CIRCUITS, ARMORED AND METAL-CLAD CABLE RUNS AND AS REQUIRED BY NFPA 70.
- PROVIDE ALL HANGERS AND SUPPORTS FOR ELECTRICAL SYSTEMS, INCLUDING STEEL SLOTTED SUPPORT SYSTEMS, CONDUIT AND CABLE SUPPORT DEVICES, SUPPORTS FOR CONDUCTORS IN VERTICAL CONDUIT. HANGERS AND SUPPORTS SHALL HAVE A FLAME RATING OF CLASS I AND BE SELF-EXTINGUISHING ACCORDING TO ASTM D 635.

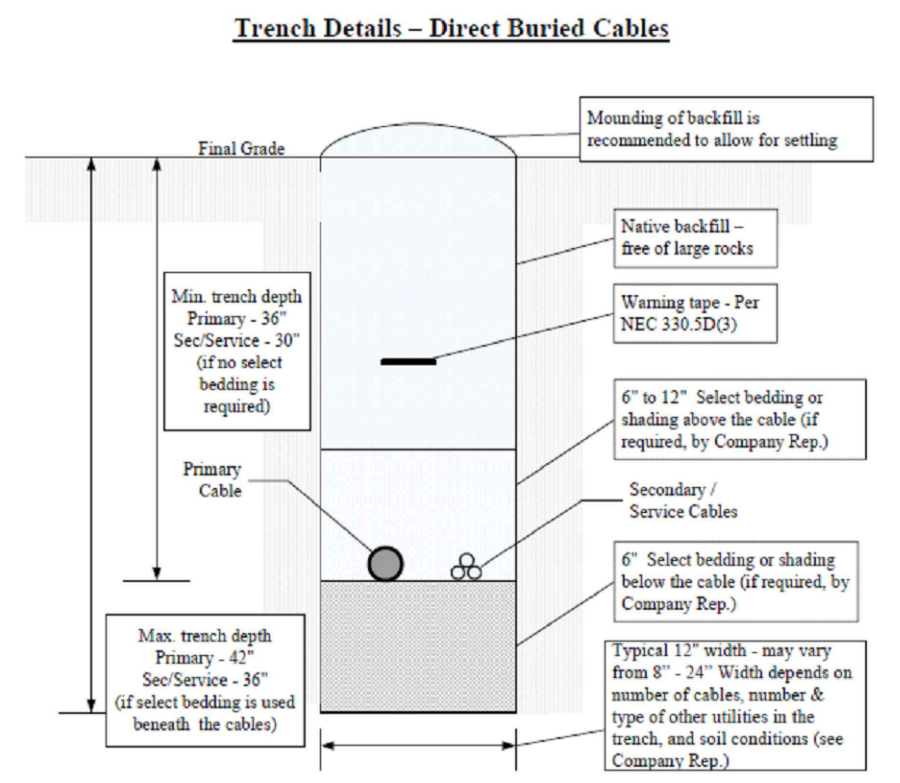


TABLE - MINIMUM COVER REQUIRED PER CODE (INCHES)

Owner / Code	Customer Installed Facilities / NEC (1)				Company / NESC
	Voltage (0-0)	Direct Buried	Rigid Metallic Conduit (RMC)	Rigid Nonmetallic Conduit (RNC)	
0 - 600 V	24	6	18	24	24
> 600 V - 22 kV	30	6	18	24	30
> 22 kV - 40 kV	36	6	24	24	30

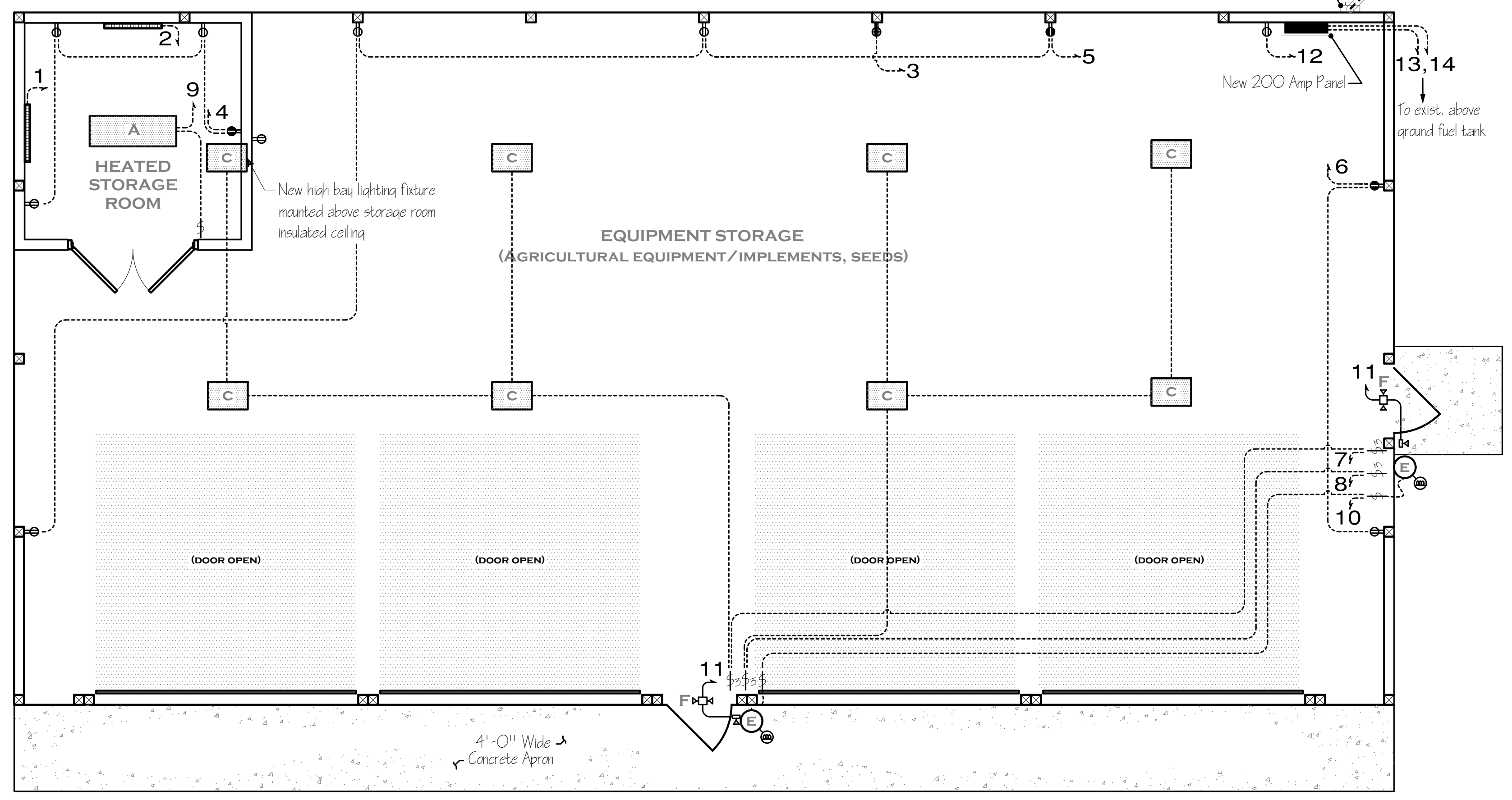
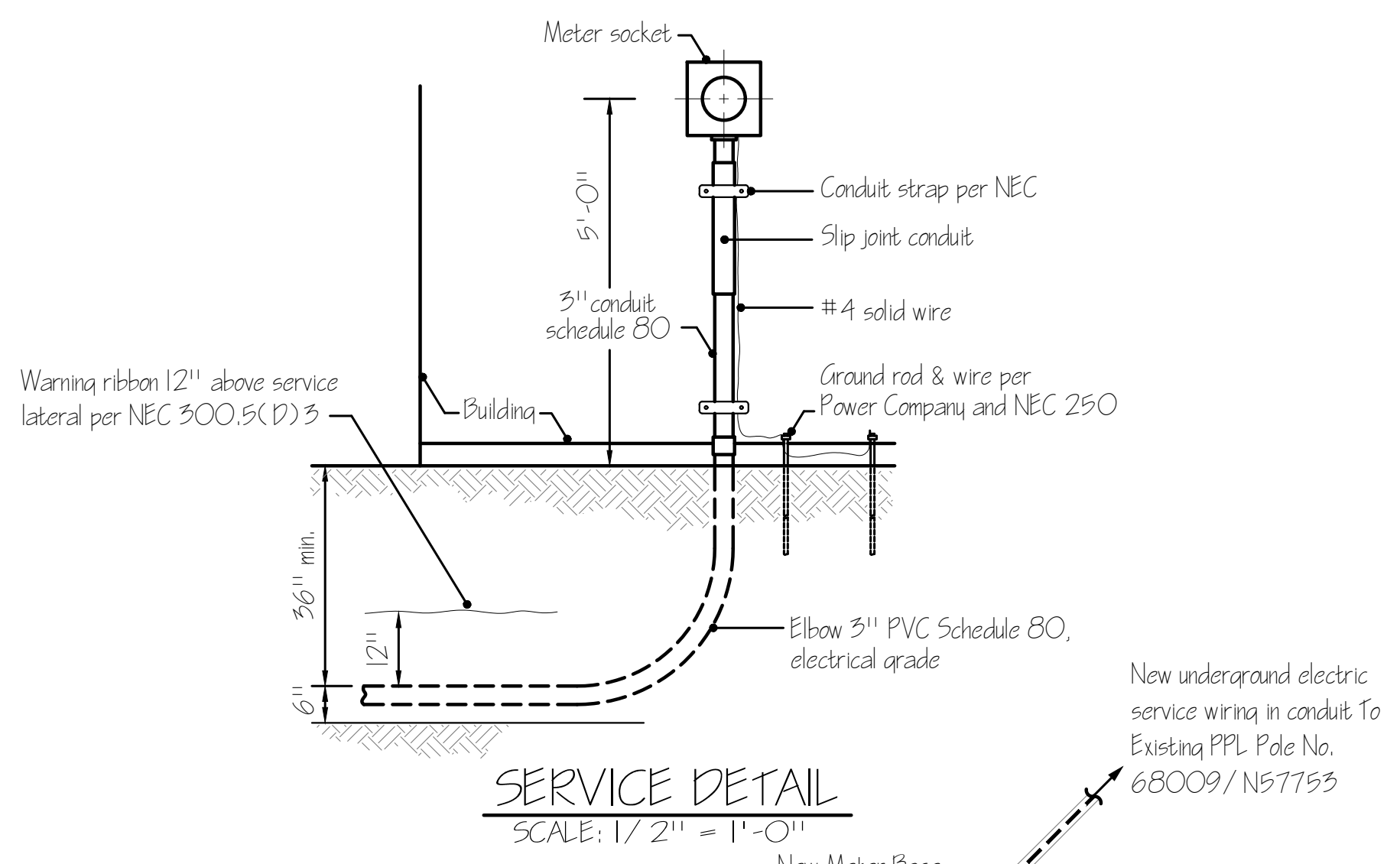
Notes: (1) FECC typically requires an additional 6 inches of cover to allow for variation in final grade.
 (2) For cables located beneath roads under Penn DOT jurisdiction, cables must be installed in conduit and have a minimum of 36 inches of cover.

LIGHTING FIXTURE SCHEDULE

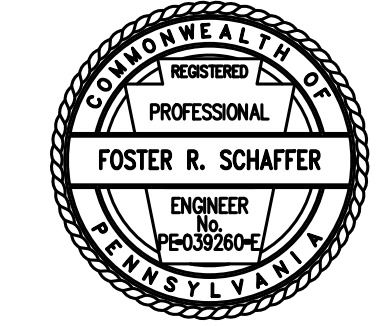
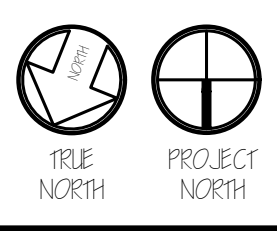
MARK	QTY	LIGHTING SCHEDULE	MODEL
A	1	16.75" x 4" Surface Mount, 4 Lamp Elec Ballast, 15	LITHONIA SB432MVOLTCEB1015
B	0	2' x 4' LED Panel	SIMKAR LDP245OLA011
C	8	15.25" x 22" 4 LAMP LED HIGH BAY	LITHONIA BHI1900OLM SPO80 MD OZIO 4CK 80 CRI
D	0	2' Fluorescent wall mount	LITHONIA 1189CORE
E	2	Security motion, Wall Mount/ Outside Unit 26 WATT LED	RAB SMLSLS 2X13 BRONZE
F	2	Exit & Emergency combo light w/ batteries & remote head	LITHONIA ECRLEDHO M6 w/ ELA LED WP MI2

LIGHTING FIXTURE SCHEDULE NOTES:

- Quotes for lighting fixtures can be provided by Gene Grassel of Dauphin Electric @ 717-986-9558.
- Receptacles and switch mounting heights - 48" A.F.F.



NEW STORAGE BUILDING FLOOR PLAN - ELECTRICAL PLAN
SCALE: 1/4" = 1'-0"



PENNSYLVANIA GAME COMMISSION

STATE GAME LANDS #159	LEBANON TWP.	WAYNE CO.
NEW 32' x 64' STORAGE BUILDING		
ELECTRIC FLOOR PLAN, SCHEDULES & DETAILS		
REVISIONS	PROJECT NO.	PGC-159-20-01
	DRAWN BY:	C. CLOUSER
	DATE:	1/4/2021
	SHEET NO.	E-1