

**SGL 230 and 249 Hedgerow Regeneration Project  
GENERAL SPECIFICATIONS**

**I. SCOPE OF WORK:**

The Pennsylvania Game Commission (PGC), Southcentral Region, requires mowing and/or mechanical cutting and felling of all shrubs and trees on 4 acres of overgrown hedgerows o SGL 230 in North Middleton and Middlesex Township, Cumberland County, and 17 acres of overgrown hedgerows in Tyrone and Huntington TWP in Adams County. Services shall include, but not be limited to, the furnishing of all labor, superintendence, tools and equipment for the work as per Attachment 1, Mowing/Mechanical Cutting and Felling Specifications. **Total number of acres treated will be contingent on available funds. All Purchase Orders require the contractor to provide the equipment, labor, insurance, and all miscellaneous expenses to complete the operation.**

Any questions concerning the technical aspects of this contract should be directed to Eric Horsh ([ehorsh@pa.gov](mailto:ehorsh@pa.gov)) at 717-676-8282

**II. PROJECT LOCATIONS:**

The project is located on three different Game lands in 2 counties, SGL No. 230 in North Middleton and Middlesex Township, Cumberland County near the town of Carlisle Springs (attachment 2), and SGL 249 in Tyrone and Huntington TWP in Adams County near the town of Heidlersburg (attachment 3). The project consists of mowing and felling all vegetation from the mapped hedgerows totaling 21 acres. **Total number of acres treated will be contingent on available funds.**

**SITE INSPECTION AND ASSISTANCE:**

PGC personnel will conduct a one-time meeting to answer any questions regarding the project. The meeting will consist of photos and video of each project location. The meeting will be held on **February 23<sup>rd</sup> 2018 at 0900 am at the Game lands headquarters building on SGL 249, at 1070 Lake Meade Rd East Berlin PA 17316. See attachment number 5.**

**III. DAMAGE TO COMMONWEALTH PROPERTY:**

The contractor shall be responsible for any damage to Commonwealth property resulting from the completion of this contract. The contractor shall immediately repair, in a manner that meets with the approval of the PGC, any damage to roads and other facilities resulting from the contractor's activities, beyond what is reasonably considered normal wear and tear.

**IV. PAYMENT TERMS:**

Payment shall be on a reimbursement basis for actual acres correctly completed as measured by the PGC. All work shall be completed prior to June 15, 2018. **Total number of acres treated will be contingent on available funds.**

**V. CONTRACT REQUIREMENTS:**

- A. All work must be completed by the contract termination date: **June 15, 2018.**
- B. The contractor agrees to comply with all attachments. The Commission reserves the right to reject any or all bids.

- C. As a further guarantee of faithful performance of the conditions set forth in this Contract, the successful bidder hereby agrees to furnish the PA Game Commission with Cashiers or Treasurers Check, payable to "Pennsylvania Game Commission", in the amount of **15% of the total bid price prior to work beginning.**

The performance bond should be mailed or otherwise delivered to the following address:

Attn: LMGS Eric Horsh  
PA Game Commission  
8627 William Penn Highway  
Huntingdon, PA 16652

The performance bond will be released upon satisfactory completion of the project as determined by the PGC.

- D. Failure to comply with any of the terms or conditions of the Contract may result in cancellation of the agreement and claim may be made against the surety or the security for all or part of the damages sustained by such noncompliance.
- E. Any extension of time under the Contract, or forbearance of cancellation and claim against the surety will not result in a release of the surety or the Principal from their obligations under the Contract and the surety.

#### **VI. INSURANCE REQUIREMENTS:**

- A. The contractor will provide Workmen's Compensation insurance sufficient to cover all of the employees of contractor working to fulfill this contract.
- B. Comprehensive General Liability Insurance, including bodily injury and property damage insurance, to protect the Commonwealth and the contractor from claims arising out of the performance of the contract. The amount of Bodily Injury Insurance shall not be less than \$300,000.00 for injury to or death of persons per occurrence. The amount of Property Damage Insurance shall not be less than \$300,000.00 per occurrence.

**HOLD HARMLESS:** The contractor shall be responsible for and agrees to indemnify and hold harmless the Commonwealth from and against damages to property or injuries (including death) to any persons and other losses, damages, expenses, claims, demands, suits, and actions by any party against the Commonwealth in connection with the work performed by the contractor.

**ATTACHMENT 1**  
**MOWING / MECHANICAL CUTTING AND FELLING SPECIFICATIONS**  
**SGL 230, SGL 249--- HABITAT PROJECT**

1. The area to be treated will be mapped and marked with orange flagging.
2. All vegetation in the treatment area shall be either mechanically mowed or felled by hand, as close to the ground as possible but no more than 4 inch stump remaining. Any hand felled woody material may be removed by and retained by the contractor but must be removed no later than June 15, 2018.
3. All materials that are hand felled and remaining on site shall be pushed into brush piles in the hedgerow.
4. Roads, road berms, ditches, culverts, and waterways must be kept clear of woody debris.
5. Heavy equipment shall not be operated when ground conditions are such that excessive soil disturbance and damage will result. The contractor may be required to repair areas that become rutted due to work.
6. The contractor shall remove all trash and garbage generated from the completion of this contract on a daily basis. This includes all materials generated from the support of felling tools and equipment, and any other items or refuse generated by the contractor's employees.
7. The contractor shall notify the LMGS Horsh three days prior to beginning the project. The contractor may work at times other than the schedule of the LMGS Horsh. The contractor may be present at the final inspection.
8. The contractor shall comply with all State Game Lands regulations.
9. The following are "Non-work days" for this project:
  - A. The day of the youth spring gobbler hunt (April 21).
  - B. All Saturdays of the statewide spring gobbler season including April 28, May 5, 12, 19, 26 (Note: The contractor has the option of working after 1:00pm on these Saturdays.)

# Attachment 2

## SGL 249 Comp 1 Mowing



Disclaimer: The User shall save the Commonwealth and The Pennsylvania Game Commission harmless from any suits, claims, or actions arising out of the use of the data files or accompanying documentation, or arising out of any defect in the data files or accompanying documentation. The Commonwealth and The Pennsylvania Game Commission exclude any and all implied warranties and make no warranty or representation with respect to the data files or accompanying documentation, including quality, performance, merchantability, or fitness for a particular purpose. These data files and documentation are provided "as is" and the User assumes the entire risk as to their quality and performance. The Geographic information contained on this site is NOT to be construed or used as authoritative data. The Game Commission and the relevant data providers have taken steps to ensure a high level of accuracy in all spatial and attribute data, but transcription errors, errors in the source documents or in the collection of data can occur. Neither the Game Commission nor any of the relevant data providers (1) make any representations or warranties with respect to the accuracy, timeliness or completeness of the data or (2) assume any liability for either any errors, omissions or inaccuracies in the information provided regardless of their cause, or for any decision made, action taken or action not taken by the user in reliance upon any maps or information provided.





# SGL 249 Comp 2 mowing



Disclaimer: The User shall save the Commonwealth and The Pennsylvania Game Commission harmless from any suits, claims, or actions arising out of the use of the data files or accompanying documentation, or arising out of any defect in the data files or accompanying documentation. The Commonwealth and The Pennsylvania Game Commission exclude any and all implied warranties and make no warranty or representation with respect to the data files or accompanying documentation, including quality, performance, merchantability, or fitness for a particular purpose. These data files and documentation are provided "as is" and the User assumes the entire risk as to their quality and performance. The Geographic information contained on this site is NOT to be construed or used as authoritative data. The Game Commission and the relevant data providers have taken steps to ensure a high level of accuracy in all spatial and attribute data, but transcription errors, errors in the source documents or in the collection of data can occur. Neither the Game Commission nor any of the relevant data providers (1) make any representations or warranties with respect to the accuracy, timeliness or completeness of the data or (2) assumes any liability for either any errors, omissions or inaccuracies in the information provided regardless of their cause, or for any decision made, action taken or action not taken by the user in reliance upon any maps or information provided.





# Spatial Integration Management System



Disclaimer: The User shall save the Commonwealth and The Pennsylvania Game Commission harmless from any suits, claims, or actions arising out of the use of the data files or accompanying documentation, or arising out of any defect in the data files or accompanying documentation. The Commonwealth and The Pennsylvania Game Commission exclude any and all implied warranties and make no warranty or representation with respect to the data files or accompanying documentation, including quality, performance, merchantability, or fitness for a particular purpose. These data files and documentation are provided "as is" and the User assumes the entire risk as to their quality and performance. The Geographic information contained on this site is NOT to be construed or used as authoritative data. The Game Commission and the relevant data providers have taken steps to ensure a high level of accuracy in all spatial and attribute data, but transcription errors, errors in the source documents or in the collection of data can occur. Neither the Game Commission nor any of the relevant data providers (1) makes any representations or warranties with respect to the accuracy, timeliness or completeness of the data or (2) assumes any liability for either any errors, omissions or inaccuracies in the information provided regardless of their cause, or for any decision made, action taken or action not taken by the user in reliance upon any maps or information provided.





# Attachment 3

## SGL 230 Mowing



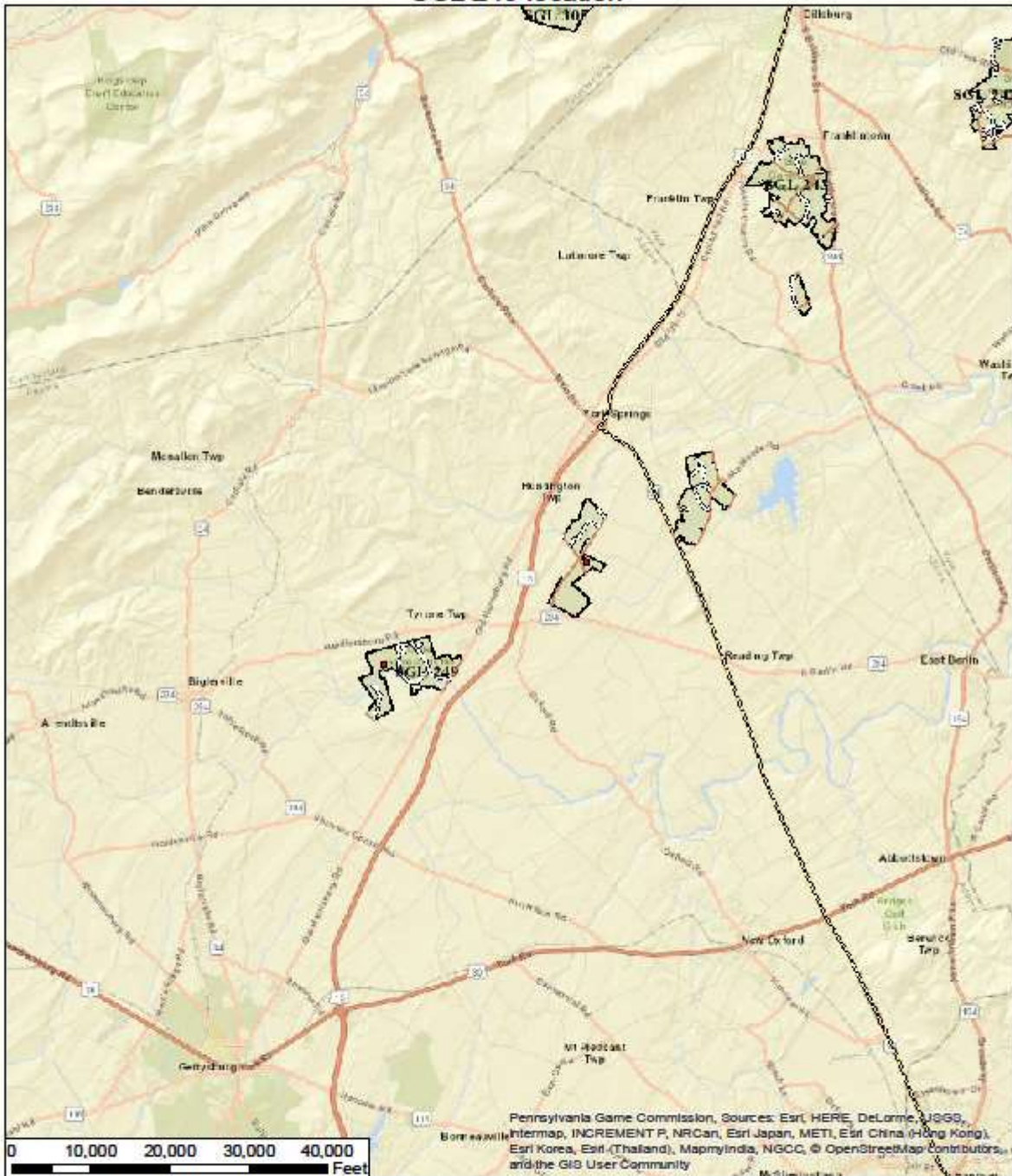
Disclaimer: The User shall save the Commonwealth and The Pennsylvania Game Commission harmless from any suits, claims, or actions arising out of the use of the data files or accompanying documentation, or arising out of any defect in the data files or accompanying documentation. The Commonwealth and The Pennsylvania Game Commission exclude any and all implied warranties and make no warranty or representation with respect to the data files or accompanying documentation, including quality, performance, merchantability, or fitness for a particular purpose. These data files and documentation are provided "as is" and the User assumes the entire risk as to their quality and performance. The Geographic information contained on this site is NOT to be construed or used as authoritative data. The Game Commission and the relevant data providers have taken steps to ensure a high level of accuracy in all spatial and attribute data, but transcription errors, errors in the source documents or in the collection of data can occur. Neither the Game Commission nor any of the relevant data providers (1) make any representations or warranties with respect to the accuracy, fitness or completeness of the data or (2) assume any liability for either any errors, omissions or inaccuracies in the information provided regardless of their cause, or for any decision made, action taken or action not taken by the user in reliance upon any maps or information provided.





# Attachment 4 Location maps

## SGL 249 location



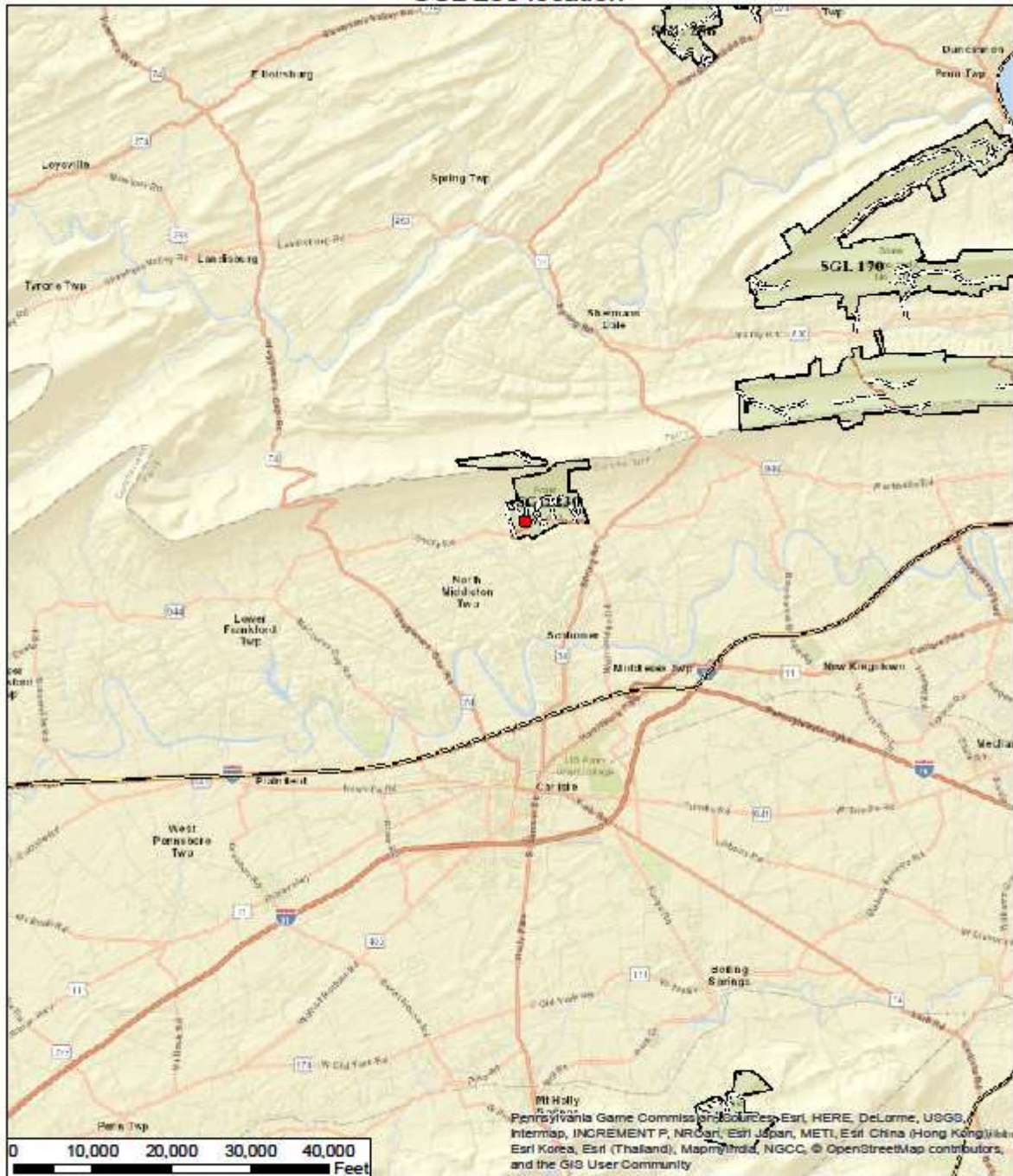
Disclaimer: The User shall save the Commonwealth and The Pennsylvania Game Commission harmless from any suits, claims, or actions arising out of the use of the data files or accompanying documentation, or arising out of any defect in the data files or accompanying documentation. The Commonwealth and The Pennsylvania Game Commission make no implied warranties and make no warranty or representation with respect to the data files or accompanying documentation, including quality, performance, merchantability, or fitness for a particular purpose. These data files and documentation are provided "as is" and the User assumes the entire risk as to their quality and performance. The Geographic information contained on this site is NOT to be construed or used as authoritative data. The Game Commission and the relevant data providers have taken steps to ensure a high level of accuracy in all spatial and attribute data, but transcription errors, errors in the source documents or in the collection of data can occur. Neither the Game Commission nor any of the relevant data providers (1) make any representations or warranties with respect to the accuracy, timeliness or completeness of the data or (2) assume any liability for either any errors, omissions or inaccuracies in the information provided regardless of their cause, or for any decision made, action taken or action not taken by the user in reliance upon any maps or information provided.





Attachment 4 (cont.)

SGL 230 location



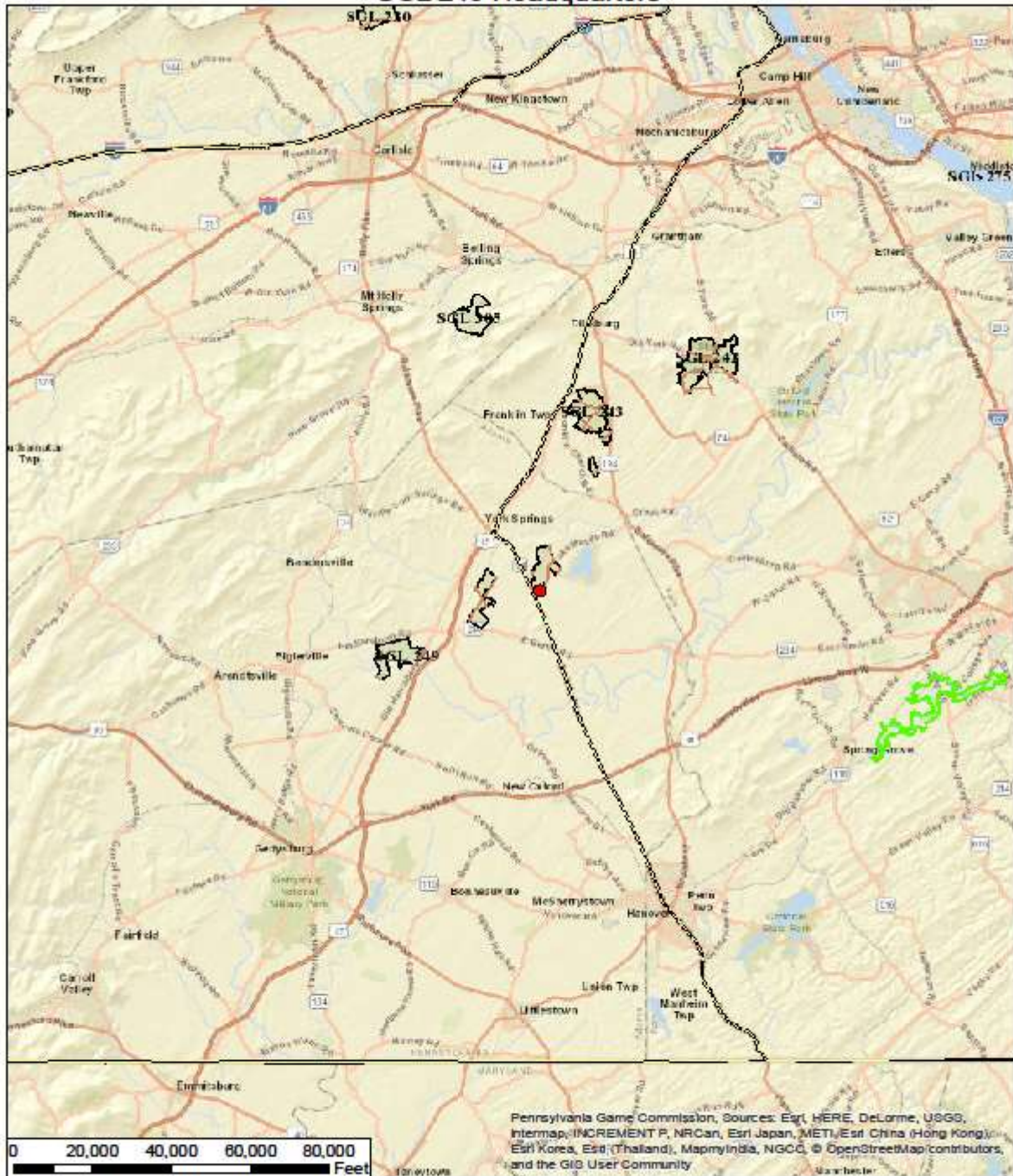
Disclaimer: The User shall save the Commonwealth and The Pennsylvania Game Commission harmless from any suits, claims, or actions arising out of the use of the data files or accompanying documentation, or arising out of any defect in the data files or accompanying documentation. The Commonwealth and The Pennsylvania Game Commission exclude any and all implied warranties and make no warranty or representation with respect to the data files or accompanying documentation, including quality, performance, merchantability, or fitness for a particular purpose. These data files and documentation are provided "as is" and the User assumes the entire risk as to their quality and performance. The Geographic information contained on this site is NOT to be construed or used as authoritative data. The Game Commission and the relevant data providers have taken steps to ensure a high level of accuracy in all spatial and attribute data, but transcription errors, errors in the source documents or in the collection of data can occur. Neither the Game Commission nor any of the relevant data providers (1) make any representations or warranties with respect to the accuracy, timeliness or completeness of the data or (2) assume any liability for either any errors, omissions or inaccuracies in the information provided regardless of their cause, or for any decision made, action taken or action not taken by the user in reliance upon any maps or information provided.





# Attachment 5

## SGL 249 Headquarters



Disclaimer: The User shall save the Commonwealth and The Pennsylvania Game Commission harmless from any suits, claims, or actions arising out of the use of the data files or accompanying documentation, or arising out of any defect in the data files or accompanying documentation. The Commonwealth and The Pennsylvania Game Commission make no warranty or representation with respect to the data files or accompanying documentation, including quality, performance, merchantability, or fitness for a particular purpose. These data files and documentation are provided "as is" and the User assumes the entire risk as to their quality and performance. The Geographic information contained on this site is NOT to be construed or used as authoritative data. The Game Commission and the relevant data providers have taken steps to ensure a high level of accuracy in all spatial and attribute data, but transcription errors, errors in the source documents or in the collection of data can occur. Neither the Game Commission nor any of the relevant data providers (1) make any representations or warranties with respect to the accuracy, timeliness or completeness of the data or (2) assume any liability for either any errors, omissions or inaccuracies in the information provided regardless of their cause, or for any decision made, action taken or action not taken by the user in reliance upon any maps or information provided.

