

**Attachment A**  
**Concrete Curb and Sidewalk Replacement**  
**Cambria County, Johnstown Driver's Exam Center**  
**Project# 11387861**  
**Building# 093DL01**

**I. Bidding Requirements**

The Contractor to provide bid for entire project.

**II. Work Included**

The following items are site specific requirements of the project.

- Contractor to repair, replace and install the necessary materials to complete the work identified below per each area identified in the Base Bid requirements.
- Remove existing concrete curbing and sidewalks from front parking area. Install new curbing and ADA ramps. Replace existing sidewalks and concrete pads in front of side entrance and Boiler room doorway. Replace existing damaged asphalt paving in parking lot. Seal coat asphalt lots in front and rear driving course. Paint new lines for parking spaces.
- Inspect the existing sub-base replace any unsuitable material and install 6" of aggregate material (Type A-57) to form a thoroughly compacted base.
- Forms: Use wood or metal forms that extend the full depth of concrete.
- Concrete Sidewalks: Place Class A concrete (4000psi) in the forms strike-off and broom finish. Form transverse dummy joints at 5 foot intervals, approximately 1/8" wide and at least 1" deep.
- Concrete curbs: Place concrete in forms in layers not exceeding 5" when using vibratory equipment to prevent voids. Smooth and finish the top surface of curb. While the concrete is still plastic round the front and rear edges. Place depressed curbs for ramps where indicated.
- Expansion Joints: Use a premolded 1/2" expansion joint material for the full depth of the sidewalk, opposite expansion joints in adjacent curb, between curb and sidewalk and between sidewalk and rigid structures.
- Removal of Forms: Do not remove side forms until at least 12 hours after placing concrete.

**Attachment A**  
**Concrete Curb and Sidewalk Replacement**  
**Cambria County, Johnstown Driver's Exam Center**  
**Project# 11387861**  
**Building# 093DL01**

- Backfilling: After the concrete has cured for 72 hours, backfill spaces adjacent to the sidewalk and curbs with acceptable embankment material. Repair any damage caused by construction. Dispose of any unsuitable or surplus materials.
  
- ADA Curb Ramps: All ADA concrete sidewalks, curbs and ramps will conform to PENNDOT Roadway Standards: RC67M and Pub 408 sec: 676. Use Type 1 Curb detail for (2) separate curb ramps. One to be located on East (left side) in front of ADA parking. The other to be located on the West (right side) in front of crosswalk.
  
- Line Painting: Repaint existing parking spaces and cross-walks. Use an Application rate (15 mils +/- 1mil) for 4" width.
  
- ADA Signs: Replace existing signs (2) with new R7-8 (2) and R7-8B (1).

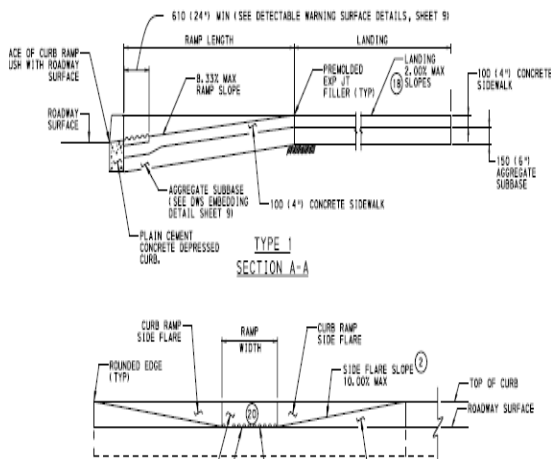
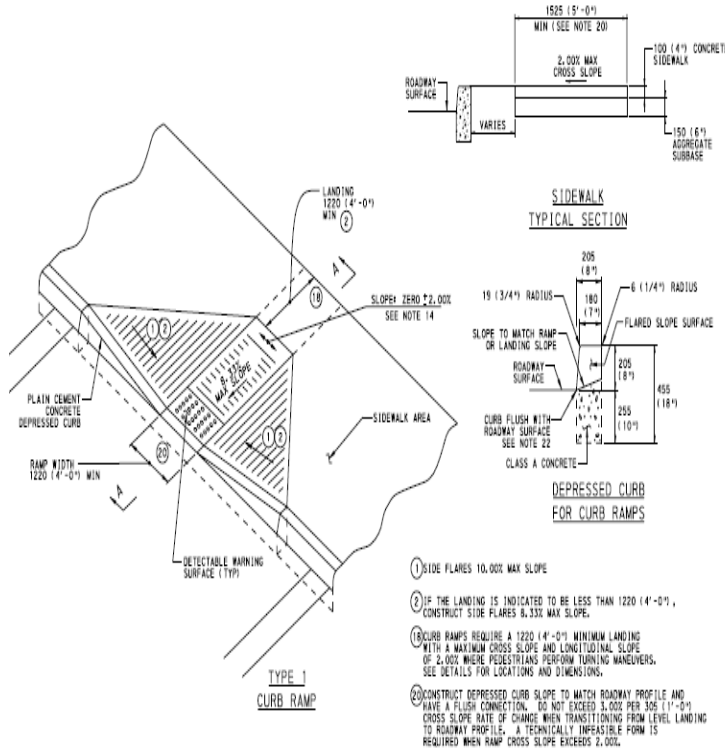
# Attachment A

## Concrete Curb and Sidewalk Replacement

### Cambria County, Johnstown Driver's Exam Center

#### Project# 11387861

#### Building# 093DL01



PERCENT SLOPE	EQUIVALENT SLOPE
10.00%	10:1 (1:1.10)
8.33%	12:1 (1:1.50)
7.14%	14:1 (1:1.75)
5.00%	20:1 (1:2.00)
2.00%	50:1 (1:5.00)
1.00%	100:1 (1:10.00)

EQUIVALENT SLOPES

#### NOTES

1. PROVIDE MATERIALS AND CONSTRUCTION MEETING THE REQUIREMENTS OF PUBLICATION 408, SECTIONS 350, 409, 630, 676 AND 694.
2. PROVIDE EXPANSION JOINT MATERIAL 13 (1/2") THICK WHERE CURB RAMP ADJOINS ANY RIGID PAVEMENT, SIDEWALK OR STRUCTURE WITH THE TOP OF JOINT FILLER FLUSH WITH ADJACENT CONCRETE SURFACE.
3. CONSTRUCT CURB RAMPS WITH A MINIMUM 1220 (4'-0") X 4'-0" CLEAR SPACE BEYOND THE CURB FACE, WITHIN THE WIDTH OF THE CROSSWALK AND WHOLLY OUTSIDE THE PARALLEL VEHICLE TRAVEL LANE. SEE SHEET 7 FOR CROSSWALK DETAILS.
4. SEAL JOINTS WITH AN APPROVED SEALING MATERIAL.
5. PROVIDE SLIP RESISTANT TEXTURE ON CURB RAMP BY COARSE BROODING TRANSVERSE TO THE SLOPE OF THE RAMP. EXTEND TEXTURE THE FULL WIDTH AND LENGTH OF THE CURB RAMP INCLUDING FLARED SIDE RAMPS.
6. MODIFY CONSTRUCTION DETAILS TO ADAPT DIMENSIONS TO EXISTING CURB HEIGHTS WHERE THE CURB IS LESS THAN THE STANDARD 205 (8") HEIGHT.
7. CURB RAMP AND SIDE FLARE LENGTHS ARE VARIABLE AND BASED ON CURB HEIGHT AND THE SIDEWALK SLOPE.
8. TO AVOID CHASING GRADE INDEFINITELY WHEN TRaversING THE HEIGHT OF CURB, RAMP LENGTH NOT TO EXCEED 4500 (15'-0"). ADJUST RAMP SLOPE AS NEEDED TO PROVIDE ACCESS TO THE MAXIMUM EXTENT FEASIBLE.
9. NON-WALK AREA IS AN OBSTRUCTED OR GRASS/NOV-PAVED AREA ADJACENT TO THE PEDESTRIAN ACCESS ROUTE THAT IS NOT USED BY THE PEDESTRIAN FOR ACCESS.
10. THE DETAILS DEPICT PEDESTRIAN PUSHBUTTON POLES TO ILLUSTRATE THE RECOMMENDED PLACEMENT OF PEDESTRIAN PUSHBUTTONS. FOR ALTERNATION PROJECTS, PROVIDE ACCESS TO EXISTING PEDESTRIAN PUSHBUTTONS TO THE MAXIMUM EXTENT FEASIBLE. INSTALL PEDESTRIAN PUSHBUTTON STUB POLES, WHERE APPLICABLE, SO AS NOT TO CREATE PEDESTRIAN OBSTRUCTIONS.
11. ALL DIMENSIONS ARE IN MILLIMETERS UNLESS OTHERWISE NOTED. US CUSTOMARY UNITS IN ( ) PARENTHESES.
12. ALIGN DETECTABLE WARNING SURFACE TRUNCATED DOMES ON A SQUARE GRID IN THE PREDOMINANT DIRECTION OF THE RAMP AND PERPENDICULAR TO CURB.
13. PROVIDE DETECTABLE WARNING SURFACES (DWS) 610 (24") MINIMUM (IN THE DIRECTION OF PEDESTRIAN TRAVEL) ACROSS FULL WIDTH OF RAMP AT THE GRADE BREAK NEAR STREET EDGE. PROVIDE DWS THAT CONTRAST VISUALLY WITH ADJACENT WALKWAY SURFACES, EITHER LIGHT-ON-DARK OR DARK-ON-LIGHT FOR THE FULL WIDTH OF RAMP.
14. FOR NEW CONSTRUCTION, DO NOT EXCEED 2.00% CROSS SLOPE ON THE CURB RAMP OR PEDESTRIAN ACCESSIBLE ROUTE.
15. FOR NEW CONSTRUCTION AND ALTERATIONS, CONSTRUCT CURB RAMP AND FLARE SLOPES WITH THE FLATTEST SLOPE POSSIBLE. THE SLOPES INDICATED IN THE DETAILS SHOW THE MAX SLOPE ALLOWABLE. SLOPES THAT EXCEED THOSE INDICATED IN THE DETAILS, OR CONTRACT DOCUMENTS AS APPLICABLE, WILL NOT BE ACCEPTED AND WILL BE RECONSTRUCTED.
16. CONSTRUCT SIDEWALKS AT A LONGITUDINAL SLOPE NOT TO EXCEED 5.00%. FOR ROADWAY PROFILE SLOPES THAT EXCEED 5.00%, CONSTRUCT PARALLEL SIDEWALKS ADJACENT TO ROADWAY AT A LONGITUDINAL SLOPE NOT TO EXCEED ROADWAY PROFILE SLOPE.
17. THE CHANGE IN GRADE AT THE BOTTOM OF THE CURB RAMP AND ADJOINING ROAD SURFACE IS NOT TO EXCEED AN ALGEBRAIC DIFFERENCE OF 11.00%. THE COUNTER SLOPE OF THE CUTTER OR ROAD AT THE FOOT OF A CURB RAMP, LANDING OR BLENDED TRANSITION IS NOT TO EXCEED 5.00%. SEE SHEET 8 FOR DETAILS.
18. THE CONSTRUCTION STANDARDS DEPICTED ARE MOST APPROPRIATE FOR NEW CONSTRUCTION. ALL CONSTRUCTION MUST MEET THE STANDARDS CONTAINED HEREIN UNLESS OTHERWISE NOTED OR DIRECTED.
19. ALL SLOPES ARE MEASURED WITH RESPECT TO A LEVEL PLANE. THEREFORE, THE LENGTH OF RAMP IS NOT SOLELY DEPENDANT ON THE HEIGHT OF CURB. FOR EXAMPLE, A 150 (6") CURB DOES NOT NECESSARILY MEAN A RAMP LENGTH OF 1830 (6'-0") FOR A 12:1 (1:1.50) SLOPE.
20. SIDEWALK WIDTH MAY BE REDUCED TO 1220 (4'-0") WHEN PASSING AREAS 1525 X 1525 (5'-0" X 5'-0") ARE PROVIDED EVERY 61 METERS (200').
21. THE TRAVEL LANE IS DEFINED BY THE OUTSIDE EDGE OF THE WHITE PAVEMENT MARKING LINE. IF A WHITE PAVEMENT MARKING LINE DOES NOT EXIST, THE TRAVEL LANE IS DEFINED BY THE CONTRACT DOCUMENTS.
22. CONSTRUCT DEPRESSED CURB FOR CURB RAMPS FLUSH TO ADJACENT ROADWAY. GRADE EDGE OF ROAD ELEVATIONS AT THE FLOW LINE TO ENSURE POSITIVE DRAINAGE AND PREVENT PONDING. FOR LEVEL LANDINGS BEHIND DEPRESSED CURB, ADJUST SLOPES TO PROVIDE POSITIVE DRAINAGE.
23. CHEEK WALLS ARE PERMITTED WHEN ADJACENT TO NON-WALK AREAS OR ELEVATION DIFFERENCES CANNOT BE ACCOMMODATED BY FLARES OR GRADING. GRADE GRASS AREAS OR OTHER NON-WALK AREAS AT 3:1 (1:3) MAXIMAL. DO NOT INSTALL CHEEK WALLS THAT INTERSECT THE PEDESTRIAN ACCESS ROUTE.
24. CONSTRUCT TOP OF PLAIN CEMENT CONCRETE DEPRESSED CURB TO BE FLUSH WITH ADJACENT SURFACES (RAMPS, SIDEWALKS, FLARES).
25. FOR CURB RAMPS THAT LEAD TO A SINGLE CROSSWALK, THE RAMP (EXCLUDING FLARES) TO BE FULLY INSIDE OF MARKED CROSSWALK LINES. SEE SHEET 7 FOR DETAILS.
26. A 1220 (4'-0") MAXIMUM DIGITAL DISPLAY LEVEL WILL BE USED TO VERIFY THE SLOPES OF CURB RAMPS AND SIDEWALKS.

**COMMONWEALTH OF PENNSYLVANIA**  
**DEPARTMENT OF TRANSPORTATION**  
INTEGRITY • SAFETY • MOBILITY  
**CURB RAMPS AND SIDEWALKS**

**Attachment A**  
**Concrete Curb and Sidewalk Replacement**  
**Cambria County, Johnstown Driver's Exam Center**  
**Project# 11387861**  
**Building# 093DL01**

END OF SECTION.

**Submittals and final Deliverable items**

- The Department will provide the awarded contractor a complete breakdown of the required submittals based off of the "System" identified, I.E. " Roofing System"
- Contractor to provide three (3) copies of the entire project documentation in three (3) ring Binders.
- Binders to include the following items:
  - Bid Documents & Specifications
  - All project meeting minutes (pre-bid, pre-Job, Interim, and Final inspection)
  - Email Correspondence
  - Submittals
  - L&I approved Engineered Drawings (Paper/CD)
  - L&I Building Permits, Inspection Logs, Occupancy Permit, Other correspondence
  - Certifications
  - Certified Payrolls (Prevailing Wage rates)
  - Waste receipts
  - Photos Before, during and after concrete and asphalt completed
    - A sufficient amount of Photos is required for all phases of construction on all buildings, base on award.
    - Building Final-Exterior all four sides of sidewalks
  - Operation and Maintenance manuals
  - Contractors Warranty
  - Manufactures Warranty

I. SUBMITTAL PROCEDURE

- A. Submit Two (2) copies of all items shown on submittal schedule except for "samples".
- B. Identify project number, project name and location, and contractor's name and address on all submittals.

**Attachment A**  
**Concrete Curb and Sidewalk Replacement**  
**Cambria County, Johnstown Driver's Exam Center**  
**Project# 11387861**  
**Building# 093DL01**

- C. Provide space for review stamps of Contractor and Department. Put contractor stamp of approval on each item submitted.
- D. Revise and resubmit submittals as required, identify all changes made since previous submittal.
- E. No work shall be performed until all submittals are approved by the Department. Work performed prior to submittal approval is performed at the Contractor's risk and may be subject to repair, replacement or other corrective measures as deemed necessary by the Department with no additional contract time or money.
- F. Review of shop drawings will be general and for the limited purpose of checking for general conformance with the design; and shall not relieve the Contractor from the responsibility for proper fitting and construction of the work, nor from furnishing materials and work required by the Contract which may not be indicated on the shop drawings when reviewed.
- G. The submittals required by this contract are subject to reproduction for the Department's internal use only. By signature on this bid proposal, both the Contractor and the equipment manufacturer authorize the Department to reproduce any materials including printed literature and training aids, submitted in fulfillment of this contract.

II. MANUFACTURER'S INSTRUCTIONS

- A. When specified in individual specification sections, submit manufacturer's printed instructions for delivery, storage, assembly, installation, start-up, adjusting and finishing, and maintenance, in quantities specified for product data.
- B. Identify conflicts between manufacturer's instructions and contract documents.

III. MANUFACTURER'S CERTIFICATES

- A. When specified in individual specification sections or on submittal schedule, submit manufacturer's certificates to for review.

**Attachment A**  
**Concrete Curb and Sidewalk Replacement**  
**Cambria County, Johnstown Driver's Exam Center**  
**Project# 11387861**  
**Building# 093DL01**

- B. Indicate that material or product conforms to or exceeds specified requirements. Submit supporting reference date, affidavits and certifications as appropriate.
- C. Certificates may be recent or previous test results on material or product, but in all cases must be acceptable to Department.

IV. SUBMITTAL SCHEDULE

A. Abbreviations:

SoSu - Source of Supply

CoCh - Color Chart

DeDa - Descriptive Data or Catalog Cuts

Cert - Certificates

ShDr - Shop or Installation Drawings

Samp – Samples

B. Schedule:

Description of items to be submitted	SoSu	DeDa	ShDr	CoCh	Samp	Cert
1. Cost Breakdown	X	X				
2. Work Schedule	X	X				
3. Engineered Stamped Drawings	X	X	X			X
4. L&I Permit Documents	X	X				X
5. Waste receipts	X					
6. Digital Photos	X					
7. Concrete	X					X
8. Steel Reinforcement	X	X				x
9. Paint	X		X			
10. Final Deliverable Items 3 ring binder	X					