

PENNSYLVANIA GAME COMMISSION

PROJECT NO. PGC-025-22-01

STATE GAME LANDS #025

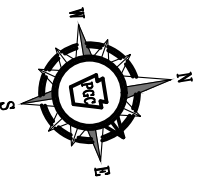
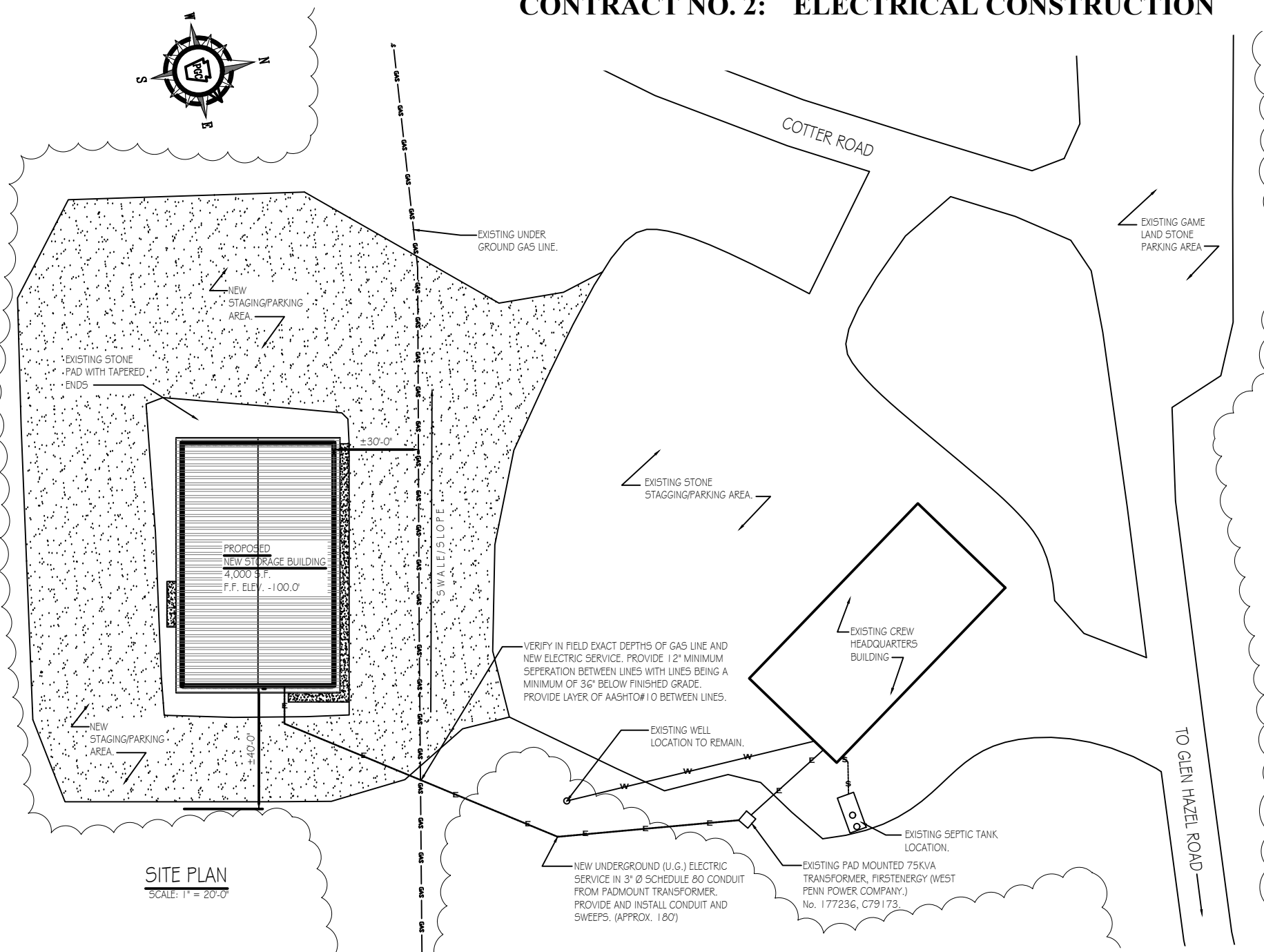
NEW 50' x 80' STORAGE BUILDING

CITY OF SAINT MARYS, ELK COUNTY, PENNSYLVANIA

CONTRACT NO. 1: GENERAL CONSTRUCTION
CONTRACT NO. 2: ELECTRICAL CONSTRUCTION

SITE PLAN GENERAL NOTES:

- UTILITY LINE LOCATIONS SHOWN ON THE DRAWINGS ARE APPROXIMATE. UNDERGROUND TELEPHONE, ELECTRIC, GAS, SANITARY SEWER, WATER AND STORMWATER DRAINAGE LINES MAY BE PRESENT AT SOME WORK LOCATIONS. FIELD VERIFICATION IS REQUIRED PRIOR TO ANY CONSTRUCTION. CONTACT PA ONE CALL AND COMPLY WITH ACT 287 (AS AMENDED) REGARDING LOCATIONS OF UNDERGROUND UTILITIES.
- ALL WORK WITHIN THE PUBLIC RIGHT-OF-WAY SHALL BE CONDUCTED IN ACCORDANCE WITH THE REQUIREMENTS OF PENNDOT, THE LOCAL MUNICIPALITY AND THE CONTRACT DOCUMENTS.
- CONTRACTOR SHALL COORDINATE WITH AFFECTED UTILITY COMPANIES IN THE EVENT ITEMS SUCH AS TEMPORARY POLE SUPPORT IS REQUIRED. THIS WORK SHALL BE COMPLETED AT NO ADDITIONAL COST TO THE OWNER.
- EXISTING DRAINAGE FACILITIES SHALL REMAIN INTACT DURING CONSTRUCTION, UNLESS OTHERWISE DIRECTED BY THE ENGINEER.
- ALL AREAS DISTURBED BY THE CONSTRUCTION WORK SHALL BE RESTORED IN ACCORDANCE WITH THE CONTRACT DOCUMENTS TO THEIR ORIGINAL CONDITION OR BETTER.
- ALL DISTURBED AREAS NOT RECEIVING OTHER SURFACE TREATMENT SHALL BE GRADED, SEEDED, AND MULCHED.
- CONTRACTOR SHALL REFER TO CONTRACT DOCUMENTS FOR SOIL EROSION & SEDIMENTATION CONTROL PLAN REQUIREMENTS.
- MAINTAIN ACCESS TO DRIVEWAYS AND ENTRANCES LOCATED ALONG THE PROJECT.
- THE CONTRACTOR SHALL ENSURE THAT ALL CONSTRUCTION VEHICLES (INCLUDING MATERIAL SUPPLIER VEHICLES) LEAVING THE PROJECT AREA HAVE MUD BUILDUP REMOVED FROM THE TIRES BEFORE EXITING ONTO PAVED ROADWAYS. ALL MUD TRACKED ONTO PAVED ROADWAYS SHALL BE IMMEDIATELY REMOVED FROM THE ROADWAY.



PROJECT VICINITY MAP
NOT TO SCALE

DRAWING INDEX

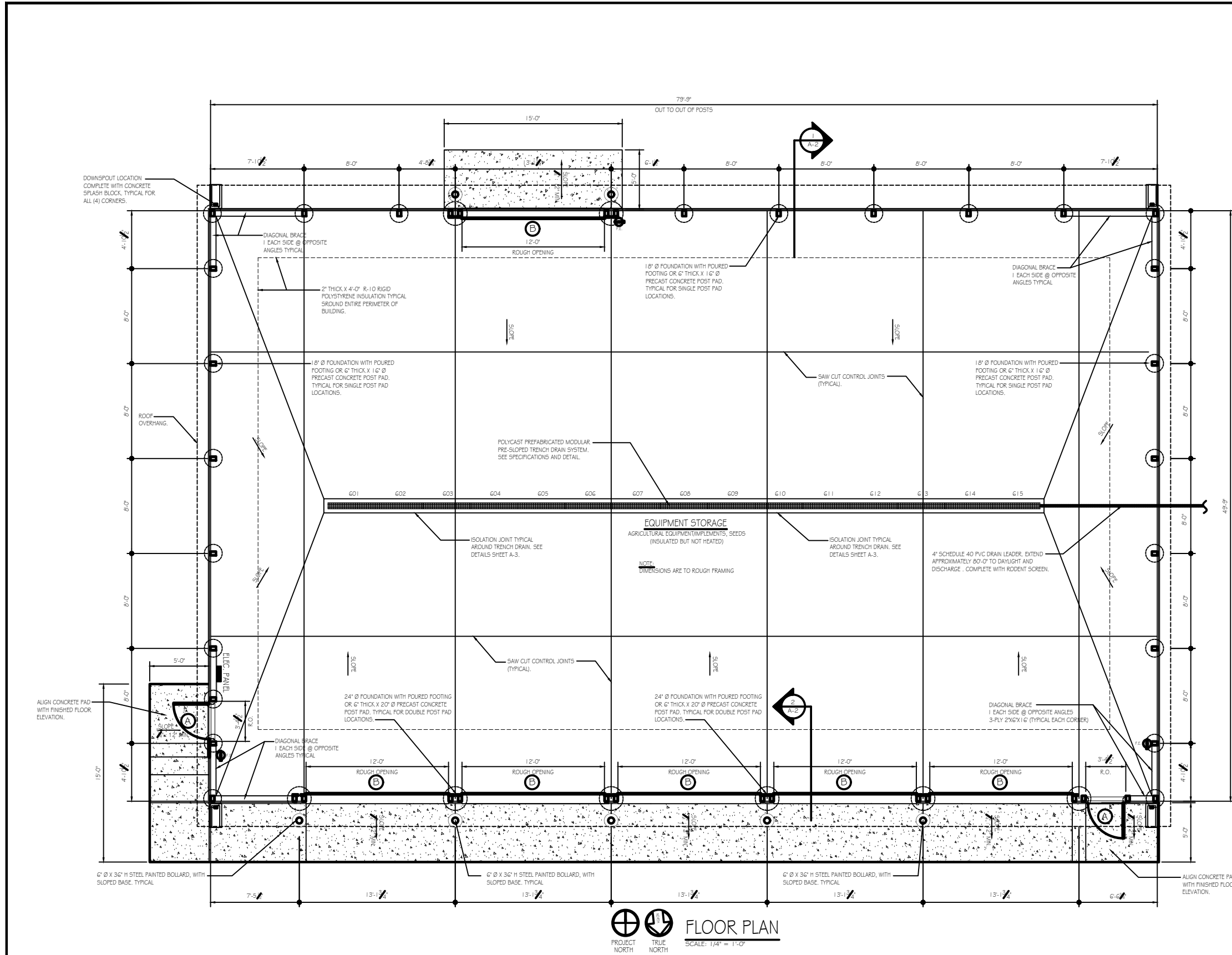
CS-1	COVER SHEET & BUILDING SITE PLAN
A-1	BUILDING FLOOR PLAN & ELEVATIONS
A-2	WALL SECTION & DETAILS
A-3	SECTIONS, DETAILS & DOOR SCHEDULE
E-1	ELECTRICAL FLOOR PLAN, SCHEDULES & DETAILS



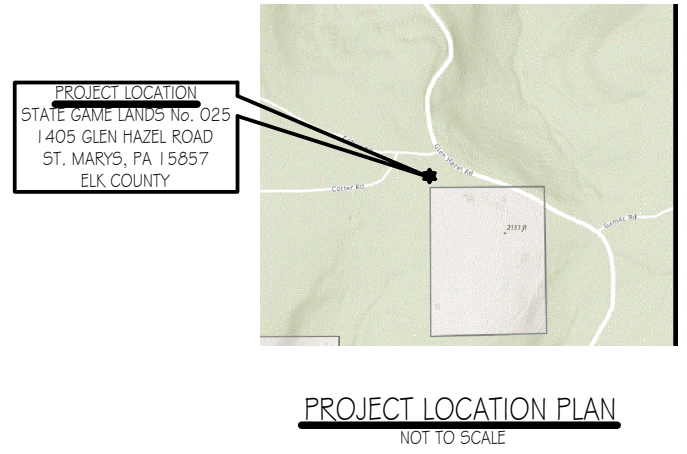
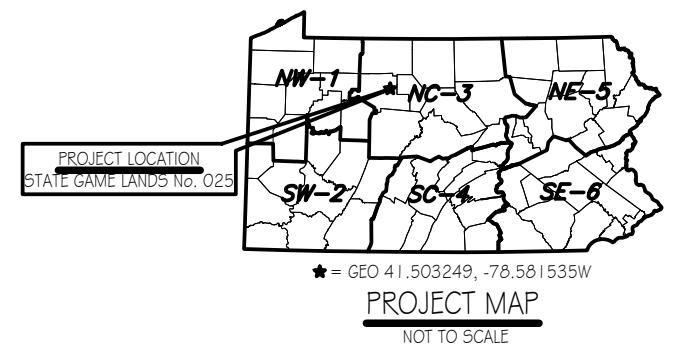
SITE PLAN
SCALE: 1" = 20'-0"



PENNSYLVANIA GAME COMMISSION		
STATE GAME LANDS # 025	CITY OF ST. MARYS	ELK COUNTY
NEW 50' x 80' STORAGE BUILDING		
COVER SHEET & BUILDING SITE PLAN		
REVISIONS	PROJECT NO.	PGC-025-22-01
	DRAWN BY:	M. SPOTTS
	DATE:	5/5/23
	SHEET NO.	CS-1



FLOOR PLAN
 PROJECT NORTH TRUE NORTH
 SCALE: 1/4" = 1'-0"



BUILDING CODE SUMMARY

Code: International Building Code, 2018 edition

Scope: Construction of a new storage building on State Game Lands No. 025 in City of Saint Marys, Elk County. The new storage building will house vehicles, excavation equipment, implements and tools necessary for maintaining state game land grounds and roadways.

Summary:

- Use & Occupancy Group: 312.1 Agricultural Building/Utility and Miscellaneous Group U
- Construction Type: VB (Table 601)
- New Building Area: 4,000s.f.
- Allowable Area: 5,500 s.f.
- Building Stories: 1 Story, No basement, Allowable Stories: 1 (504.4)
- Fire Protection: No fire suppression, not required.
- Fire Extinguishers: Units of "A" = 4,000 / 1,500 = 2.66 ~ 3 (Table 906.3(1)) Fire extinguisher shall be provided at each of the two building exits and one at the opposite end of building near OH door.
- Occupant Load: Storage, Occupancy Factor = 300 gross
4,000 S.F./300 = 13.3 ~ 14 persons
- Egress Width: 14 x 0.2 inches = 2.8 inches min. (1005.3.2).
- Means Of Egress: 2 Exits provided = 72 inches; 1 required (1007.1, 1 Table 1015.1).
- Accessibility: Not required, agricultural building. (Chapter 11)
- Energy Efficiency: Building/structure will not be heated or airconditioned.
Low-Energy Building. (IECC)(C402.1.1)

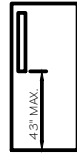


PENNSYLVANIA GAME COMMISSION		
STATE GAME LANDS # 025	CITY OF ST. MARYS	ELK COUNTY
NEW 50' x 80' STORAGE BUILDING		
BUILDING FLOOR PLAN		
REVISIONS	PROJECT NO.	PGC-025-22-01
	DRAWN BY:	M. SPOTTS
	DATE:	5/5/23
	SHEET NO.	A-1

Mark	Type	W	H	T	Hand	Qty	Remarks
A	I	3'-0"	7'-0"	1-3/4"	RHR	2	INSULATED CORE, PANIC BOLT, CLOSER
B	O.H.	12'-0"	12'-0"	SEE SPECIFICATIONS		6	INSULATED SECTIONAL OVERHEAD DOOR

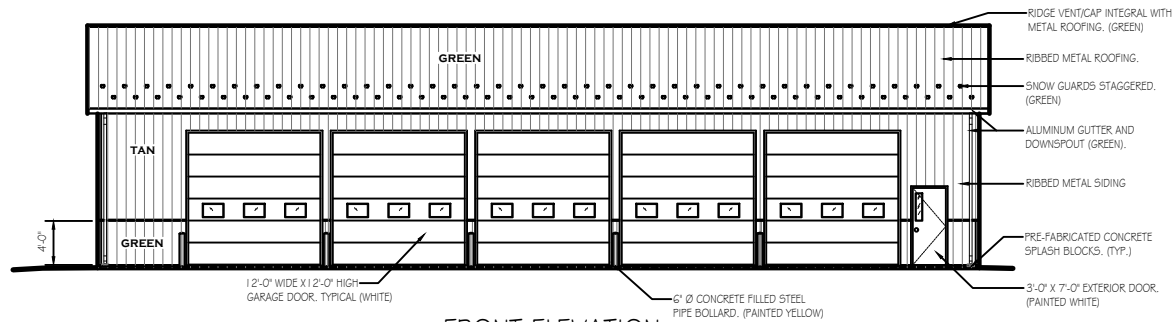
DOOR SCHEDULE NOTES:

- 1) ALL CORES TO BE BEST CORMAX, 7 PIN COMPATIBLE.
- 2) SEE PROJECT SPECIFICATIONS FOR DOOR FRAMES & DOOR HARDWARE REQUIRED.



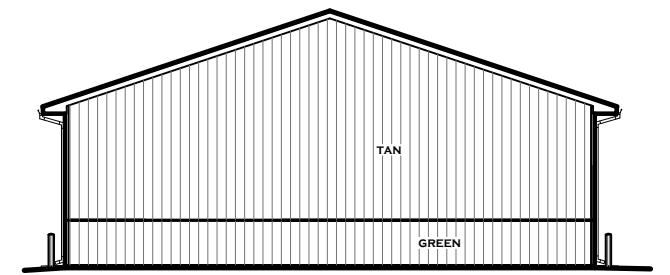
TYPE I

DOOR SCHEDULE
N.T.S.



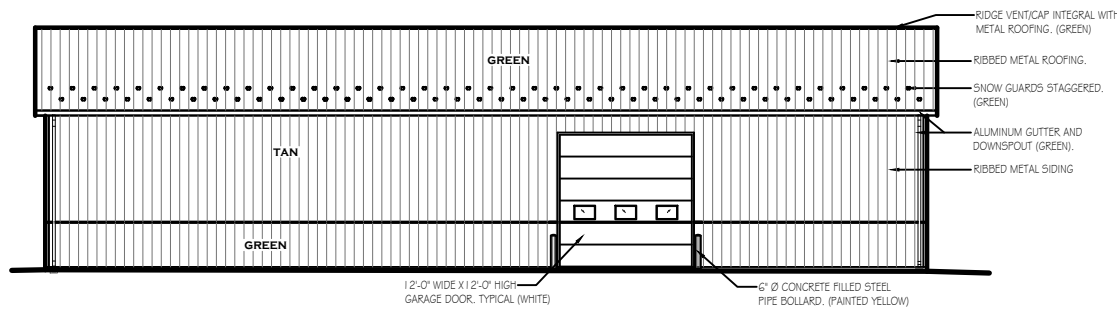
FRONT ELEVATION

SCALE: 1/8" = 1'-0"



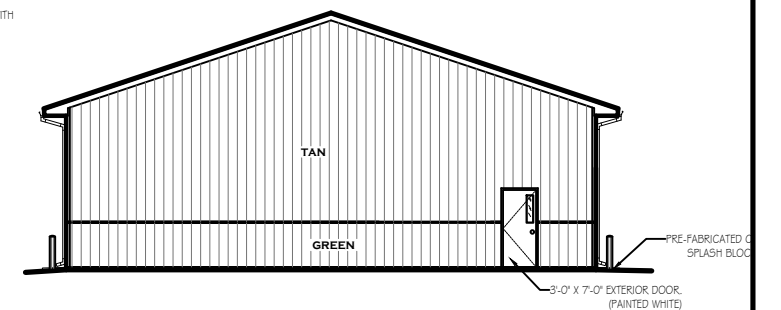
LEFT ELEVATION

SCALE: 1/8" = 1'-0"



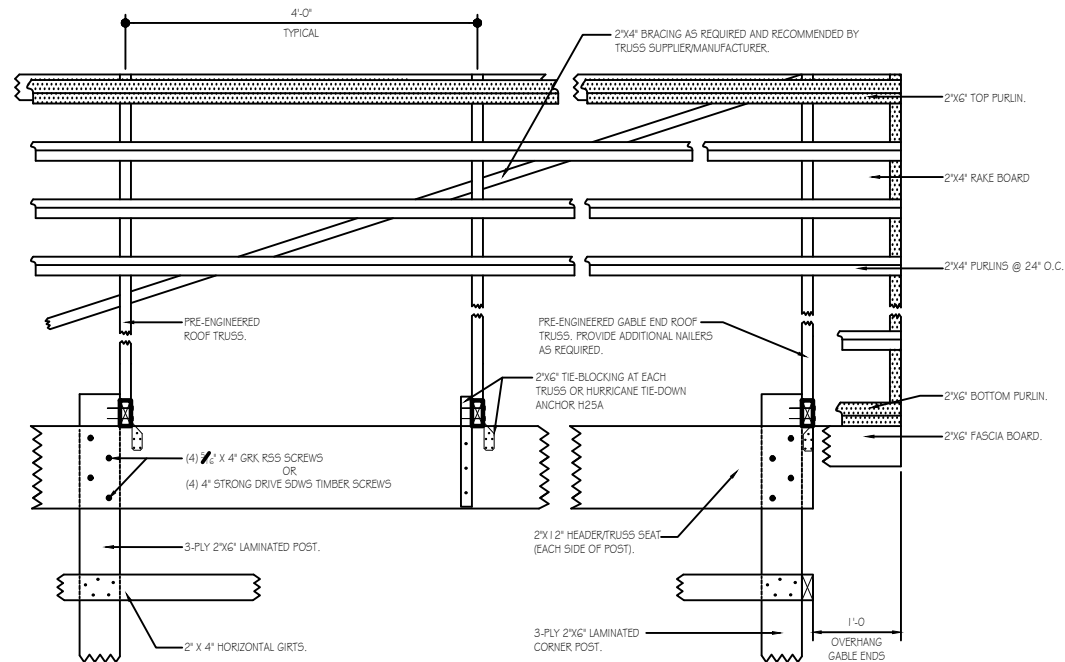
REAR ELEVATION

SCALE: 1/8" = 1'-0"



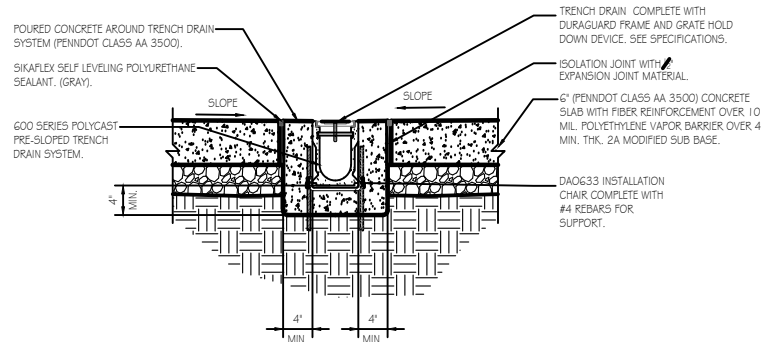
RIGHT ELEVATION

SCALE: 1/8" = 1'-0"



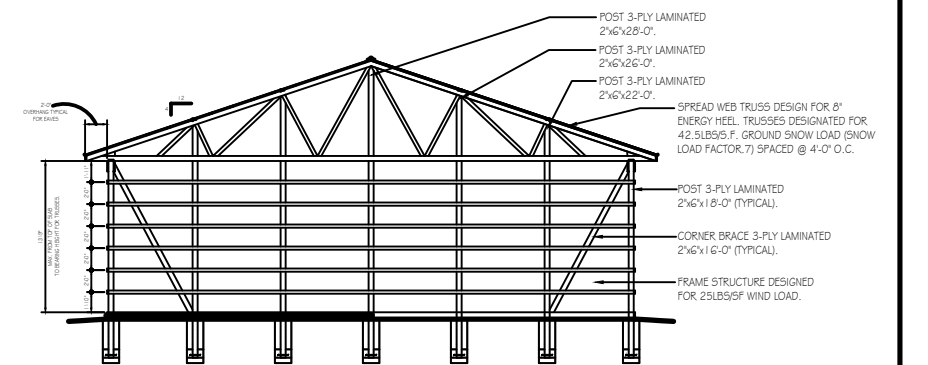
TYPICAL ROOF FRAMING/BRACING DETAIL

SCALE: 1" = 1'-0"



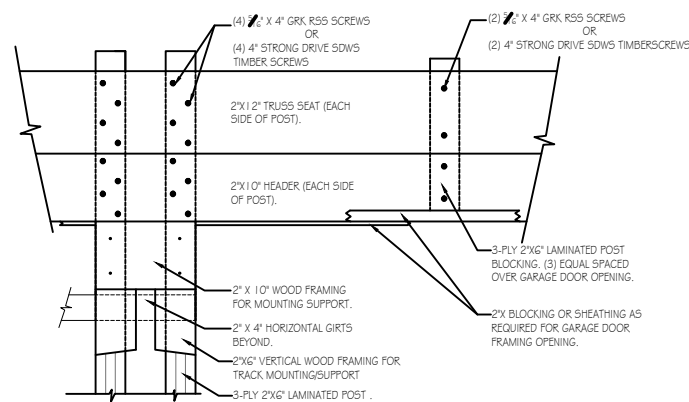
TRENCH DRAIN DETAIL

SCALE: 1" = 1'-0"



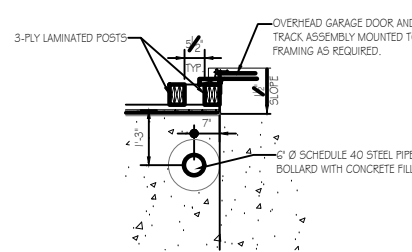
TYPICAL SECTION

SCALE: 1/8" = 1'-0"



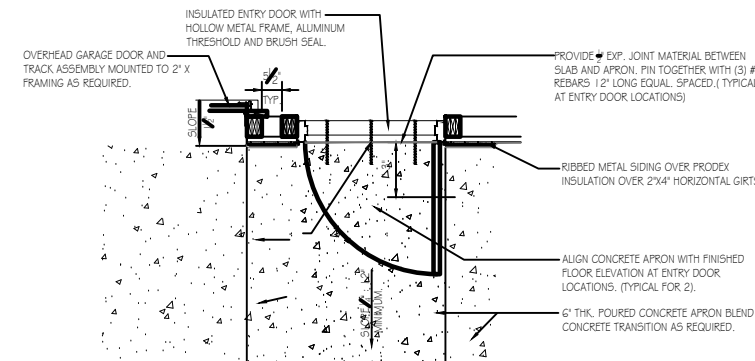
GARAGE DOOR FRAMING DETAIL

SCALE: 1" = 1'-0"



DETAIL AT BOLLARD

SCALE: 1/2" = 1'-0"

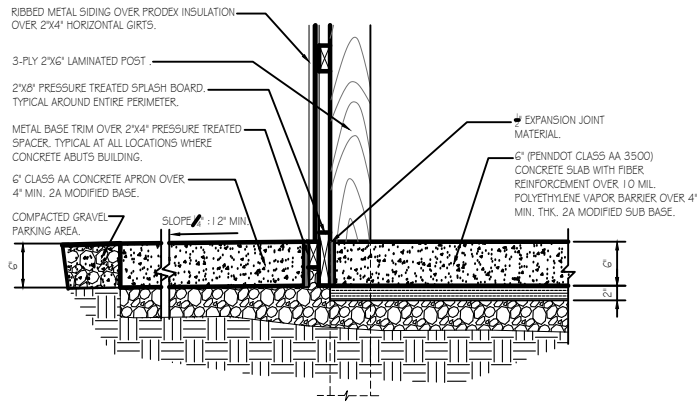


DETAIL AT ENTRY DOOR

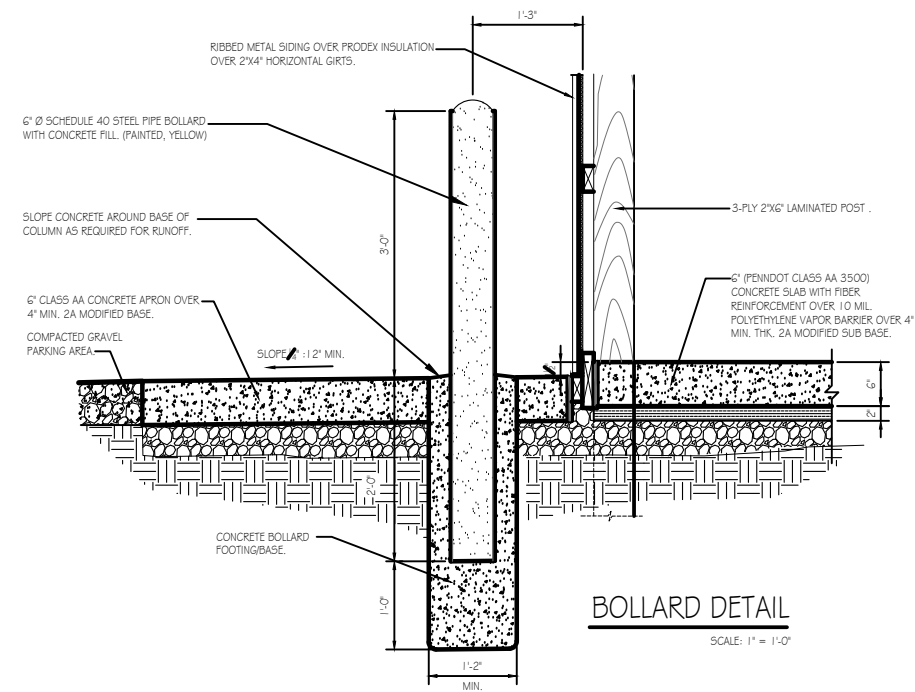
SCALE: 1/2" = 1'-0"



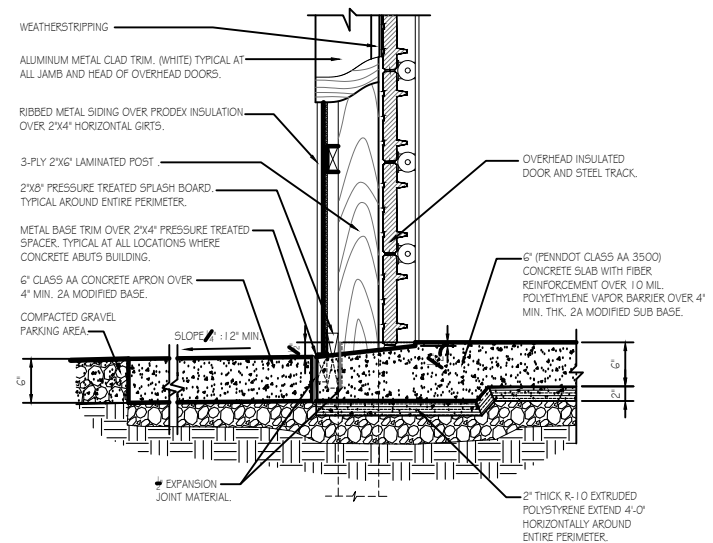
PENNSYLVANIA GAME COMMISSION		
STATE GAME LANDS # 025	CITY OF ST. MARYS	ELK COUNTY
NEW 50' x 80' STORAGE BUILDING		
BUILDING ELEVATIONS, SECTION, DETAILS & DOOR SCHEDULE		
REVISIONS	PROJECT NO.	PGC-025-22-01
	DRAWN BY:	M. SPOTTS
	DATE:	5/5/23
	SHEET NO.	A-2



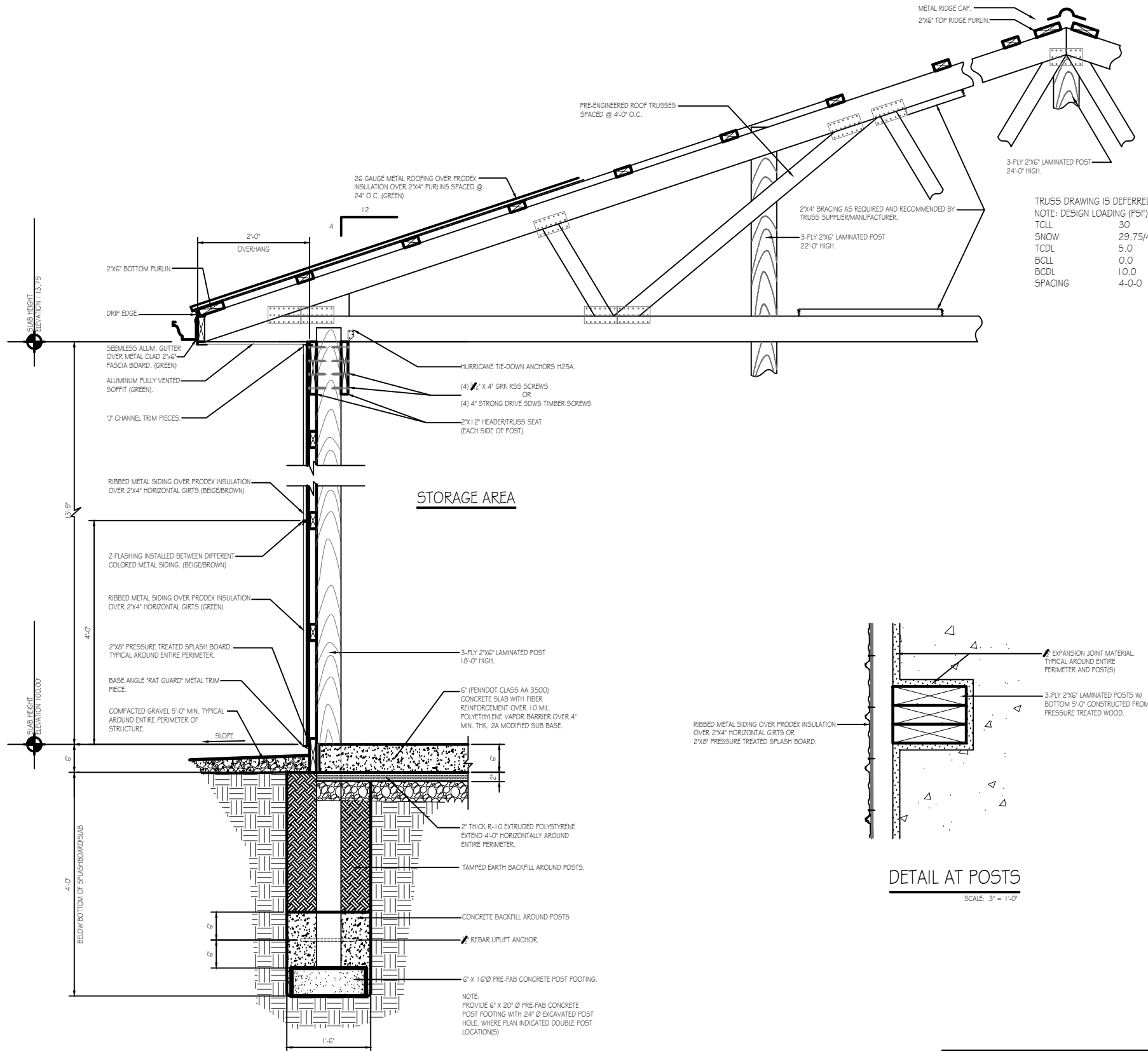
DETAIL @ CONCRETE SIDEWALK
SCALE: 1" = 1'-0"



BOLLARD DETAIL
SCALE: 1" = 1'-0"



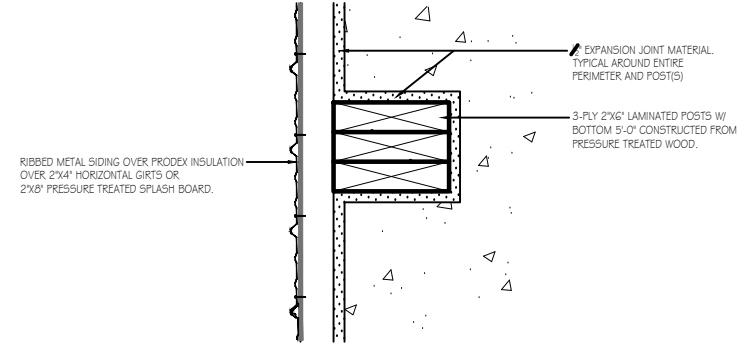
O.H. DOOR SILL AND JAMB DETAIL
SCALE: 1" = 1'-0"



WALL SECTION DETAIL
SCALE: 1" = 1'-0"

TRUSS DRAWING IS DEFERRED.
NOTE: DESIGN LOADING (PSF)

TCLL	30
SNOW	29.75/42
TCDL	5.0
BCLL	0.0
BCDL	10.0
SPACING	4-0-0



DETAIL AT POSTS
SCALE: 3" = 1'-0"



PENNSYLVANIA GAME COMMISSION		
STATE GAME LANDS # 025	CITY OF ST. MARYS	ELK COUNTY
NEW 50' x 80' STORAGE BUILDING		
SECTIONS & DETAILS		
REVISIONS	PROJECT NO.	PGC-025-22-01
	DRAWN BY:	M. SPOTTS
	DATE:	5/5/23
	SHEET NO.	A-3

LOAD CENTER - 200A
 VOLTAGE: 240/120V
 SERVICE FEEDER SIZE: 4-#250 kcmil

ALL EXPOSED WIRING IN MIN. 1/2" CONDUIT.

CIRCUIT NO.	CIRCUIT BREAKERS		200 AMP Main Breaker Panel	Wiring No./Size	Conduit Size
	POLES	AMPS			
1	2	50	220 VOLT WELDING OUTLET	3 - #6	1-1/4"
2					
3					
4	2	50	220 VOLT WELDING OUTLET	3 - #6	1-1/4"
5	1	20	STORAGE RECEPTACLES, NORTH SIDE	3 - #12	3/4"
6	1	20	STORAGE RECEPTACLES, WEST SIDE	3 - #12	3/4"
7	1	20	STORAGE RECEPTACLES, SOUTH SIDE	3 - #12	3/4"
8	1	20	STORAGE RECEPTACLES, EAST SIDE	3 - #12	3/4"
9	1	20	DOOR LIFT RECEPTACLES	3 - #12	3/4"
10	1	20	DOOR LIFT RECEPTACLES	3 - #12	3/4"
11	1	20	STORAGE LIGHTING, WEST SIDE	3 - #12	3/4"
12	1	20	STORAGE LIGHTING, EAST SIDE	3 - #12	3/4"
13	1	20	SERVICE PANEL RECEPTACLES	3 - #12	3/4"
14-24			SPARE SPACES		

ELECTRICAL WIRING SYMBOLS

- WR-GFI GFI-WATER RESISTANT-RECEPTACLE
- GFI GFI RECEPTACLE
- DUPLX OUTLET, SPLIT CIRCUIT
- DUPLX OUTLET
- 50 AMP, 220 VOLT OUTLET, WELDER (VERIFY TYPE & LOCATION WITH PGC)
- 30 AMP, 220 VOLT OUTLET
- 30 AMP, 220 VOLT OUTLET (DRYER)
- HOME RUN/CIRCUIT #
- TELECOMMUNICATIONS OUTLET
- JUNCTION BOX
- PHOTO CELL
- EXIT LIGHTING W/BATTERIES
- SWITCH
- 3 SWITCH, 3 WAY
- 4 SWITCH, 4 WAY
- OC SWITCH, OCCUPANCY SENSOR
- PRESSURE SWITCH
- WATER PUMP

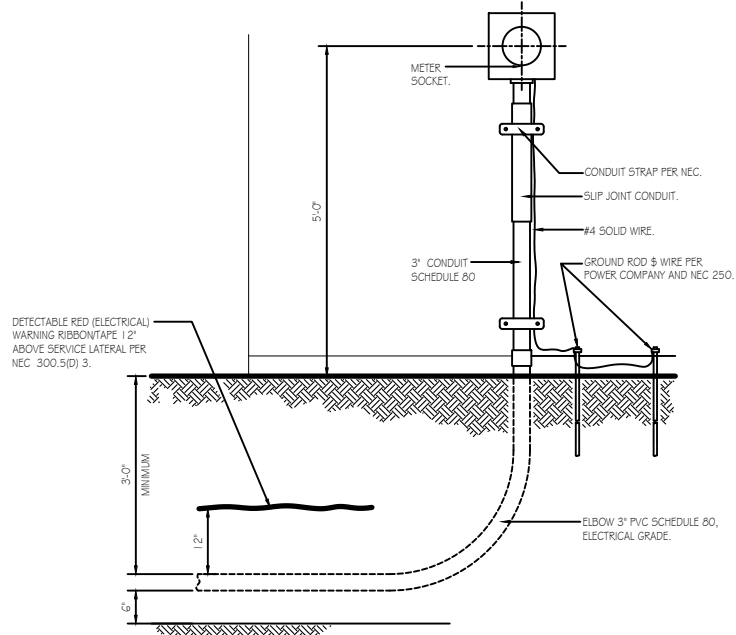
GENERAL ELECTRICAL NOTES:

- FURNISH AND INSTALL SOLID COPPER CONDUCTORS AS SPECIFIED; NO ALUMINUM AND NO STRANDED. MC CABLE IS APPROVED FOR ALL HOME RUN CIRCUITS IF NEATLY INSTALLED.
- ALL CONDUCTORS FOR 120V CIRCUITS OVER 100' IN LENGTH SHALL BE MINIMUM #10AWG. ALL CONDUCTORS FOR 120V CIRCUITS OVER 150' IN LENGTH SHALL BE MINIMUM #8AWG. CONTRACTOR IS RESPONSIBLE FOR VERIFICATION OF FINAL CIRCUIT LENGTHS AND CORRESPONDING WIRE SIZE TO ENSURE VOLTAGE DROP IS MAINTAINED WITHIN NEC LIMITS.
- ALL WORK SHALL BE PERFORMED AS REQUIRED BY APPLICABLE SECTION OF THE NATIONAL ELECTRICAL CODE (NEC), LATEST EDITION, AND ALL GOVERNING UCC BUILDING CODES AND REGULATIONS.
- PROVIDE GROUNDING AND BONDING FOR ELECTRICAL SYSTEMS. ELECTRICAL COMPONENTS, DEVICES AND ACCESSORIES SHALL BE LISTED AND LABELED AS DEFINED IN NFPA 70 AND COMPLY WITH UL 467 FOR GROUNDING AND BONDING MATERIALS AND EQUIPMENT. INSTALL INSULATED EQUIPMENT GROUNDING CONDUCTORS ALL FEEDERS AND BRANCH CIRCUITS, LIGHTING CIRCUITS, RECEPTACLE CIRCUITS SINGLE PHASE MOTOR AND APPLIANCE BRANCH CIRCUITS, ARMORED AND METAL-CLAD CABLE RUNS AND AS REQUIRED BY NFPA 70.
- PROVIDE ALL HANGERS AND SUPPORTS FOR ELECTRICAL SYSTEMS, INCLUDING STEEL SLOTTED SUPPORT SYSTEMS, CONDUIT AND CABLE SUPPORT DEVICES, SUPPORTS FOR CONDUCTORS IN VERTICAL CONDUIT. HANGERS AND SUPPORTS SHALL HAVE A FLAME RATING OF CLASS 1 AND BE SELF-EXTINGUISHING ACCORDING TO ASTM D 635.
- MOUNT COMBINATION EXIT/EMERGENCY LIGHTING UNITS TO THE LIGHTING BRANCH CIRCUIT IN THE ROOM IT IS SERVING ON THE LINE SIDE OF ANY SWITCHES.

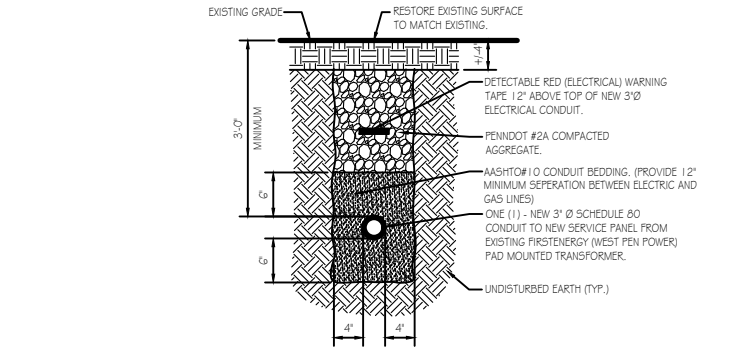
LIGHTING FIXTURE SCHEDULE

MARK	QTY	LIGHTING FIXTURE	MODEL
A	2	EXIT & EMERGENCY COMBO LIGHT W/ BATTERIES & REMOTE HEAD.	LITHONIA ECRLEDHO MG WELA LED WP M12
B	3	SECURITY PHOTOCELL, WALL MOUNT/OUTSIDE UNIT 1.8 WATT LED	LITHONIA TWS LED P1.50K MVOLT PE DOB M4
C	10	15.25' X 22.4' LAMP LED HIGH BAY	LITHONIA IBH 15000LM 50080 MD QZ10 40K 80 CRI

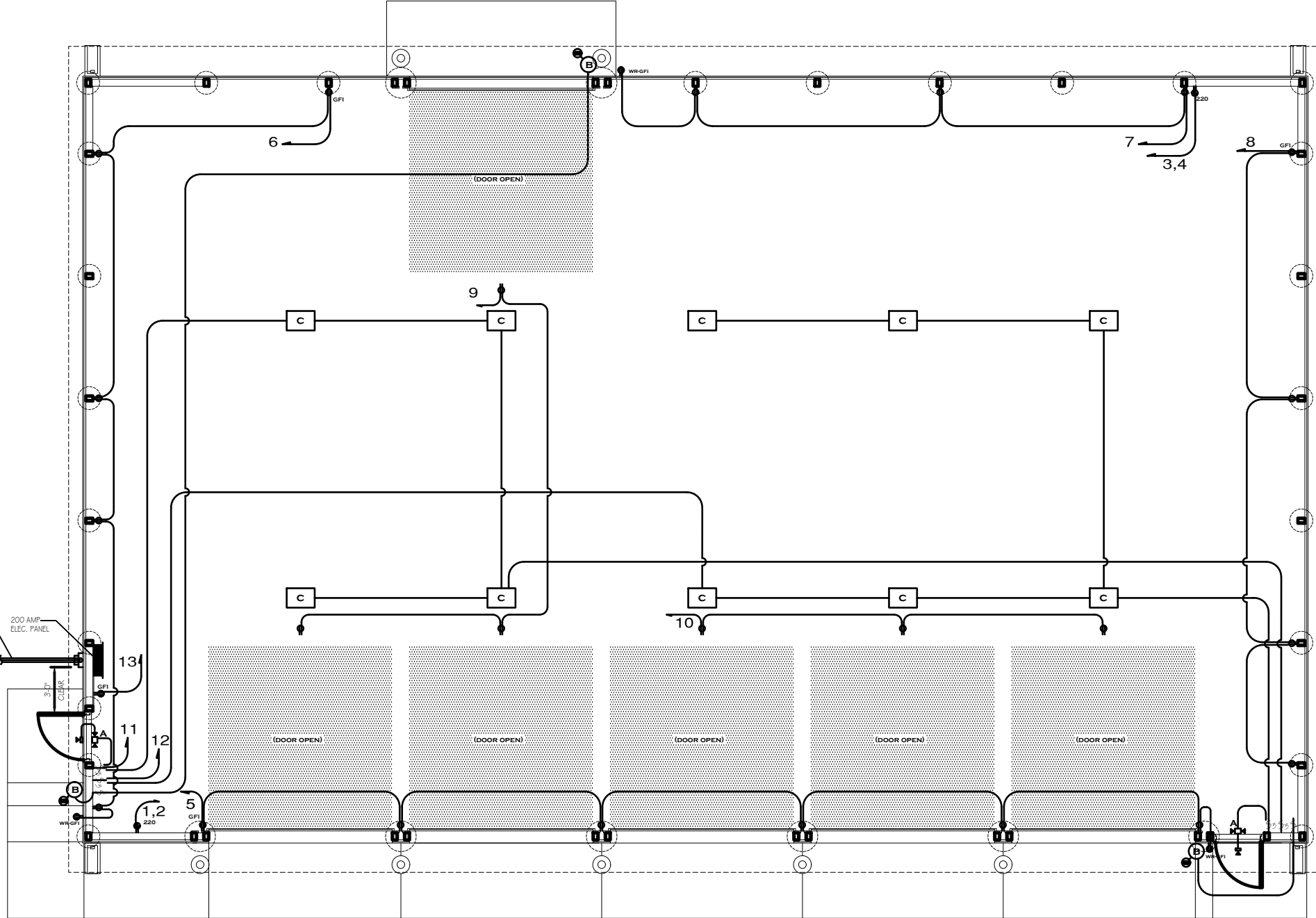
LIGHTING FIXTURE SCHEDULE NOTES:
 1. RECEPTACLES AND SWITCH MOUNTING HEIGHTS - 48" A.F.F.



SERVICE DETAIL
NO SCALE



TYPICAL ELECTRICAL TRENCH DETAIL
NO SCALE



NEW STORAGE BUILDING FLOOR PLAN - ELECTRICAL PLAN
SCALE: 1/4" = 1'-0"



PENNSYLVANIA GAME COMMISSION		
STATE GAME LANDS # 025	CITY OF ST. MARYS	ELK COUNTY
NEW 50' x 80' STORAGE BUILDING		
ELECTRICAL FLOOR PLAN, SCHEDULES & DETAILS		
REVISIONS	PROJECT NO.	PGC-025-22-01
	DRAWN BY:	M. SPOTTS
	DATE:	5/5/23
	SHEET NO.	E-1