



PICTURE OF BUILDING (EAST SIDE)



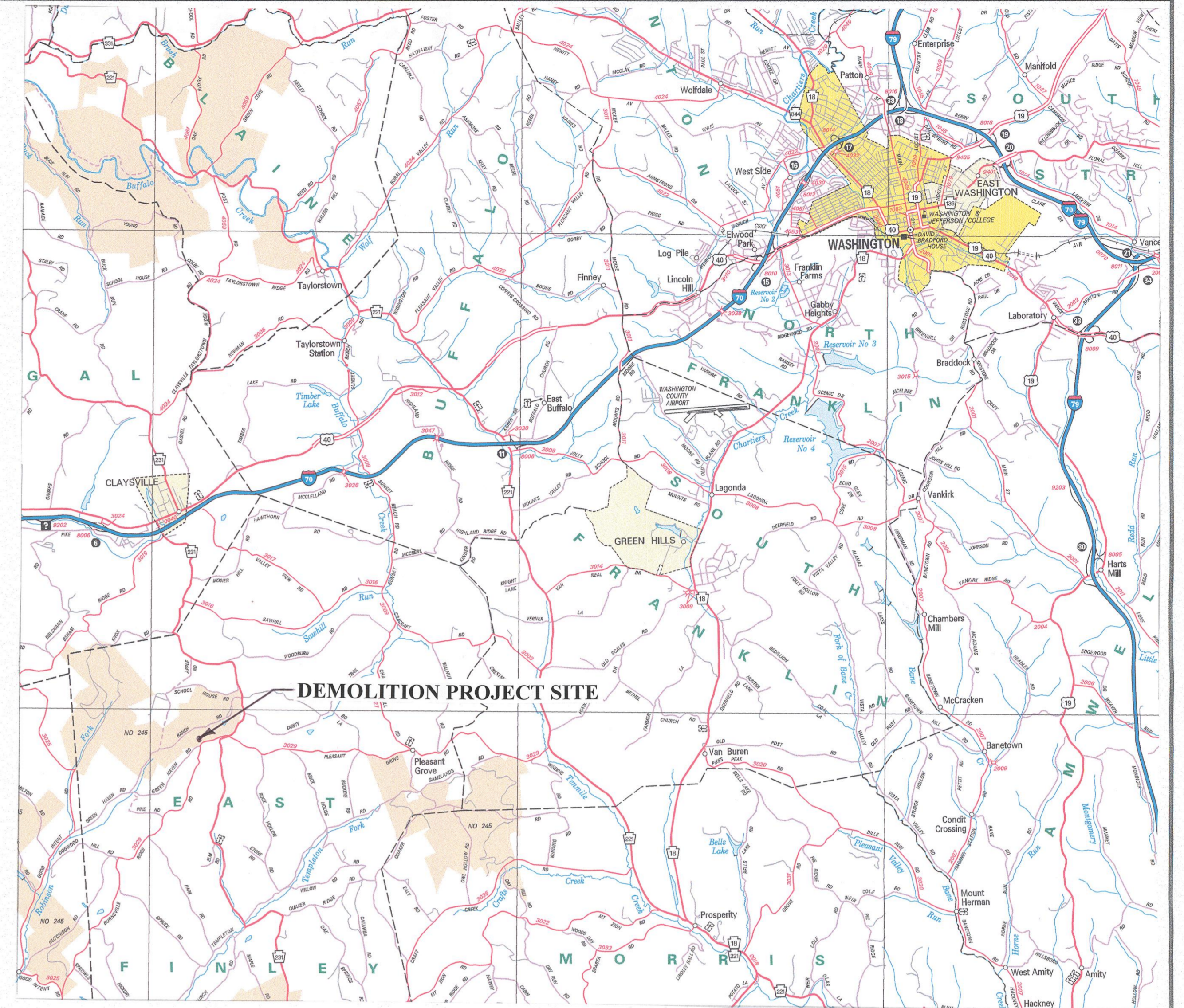
PICTURE OF BUILDING (SOUTH SIDE)



PICTURE OF BUILDING (WEST SIDE)



PICTURE OF BUILDING (NORTH SIDE)

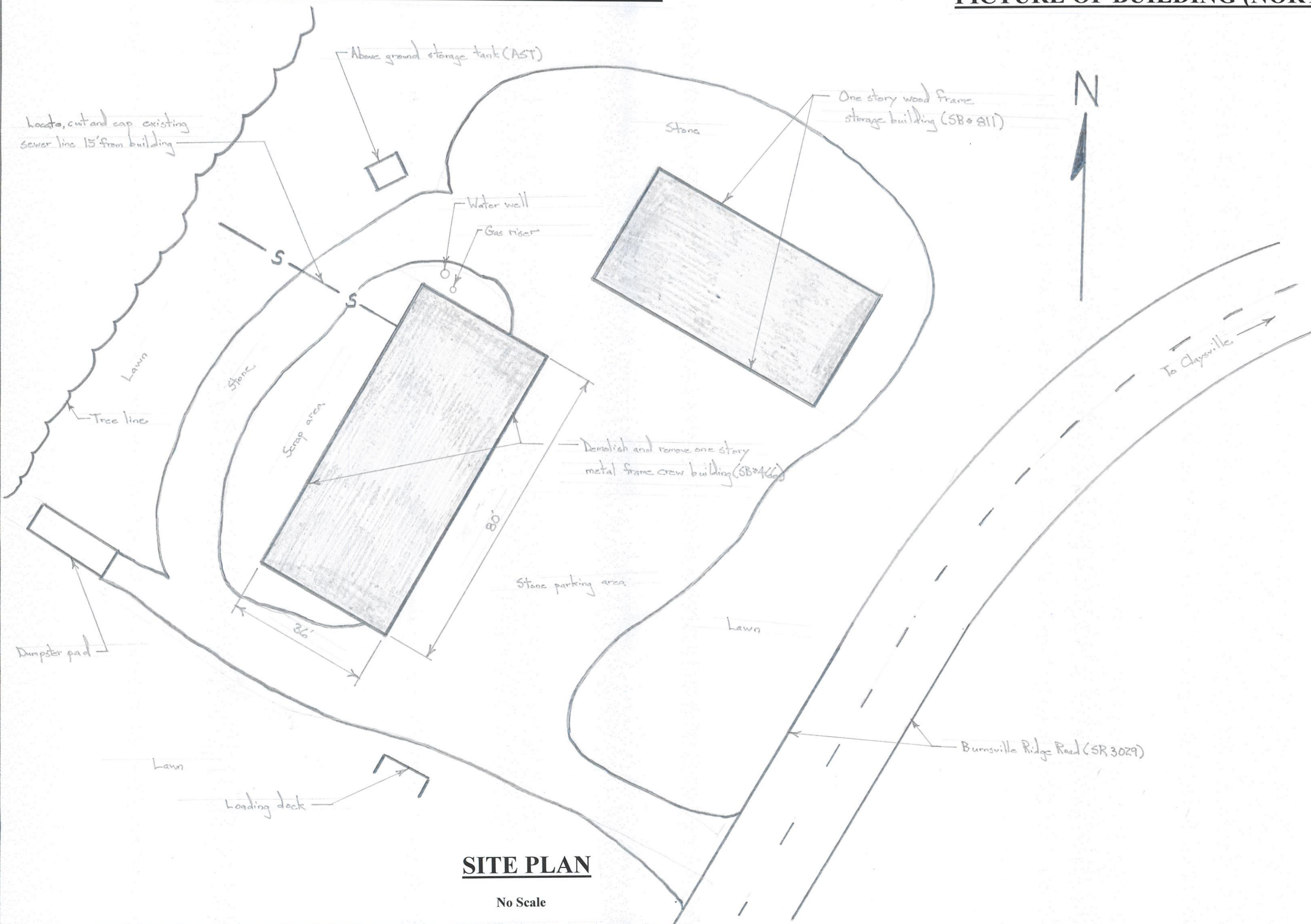


DEMOLITION PROJECT SITE

LOCATION MAP

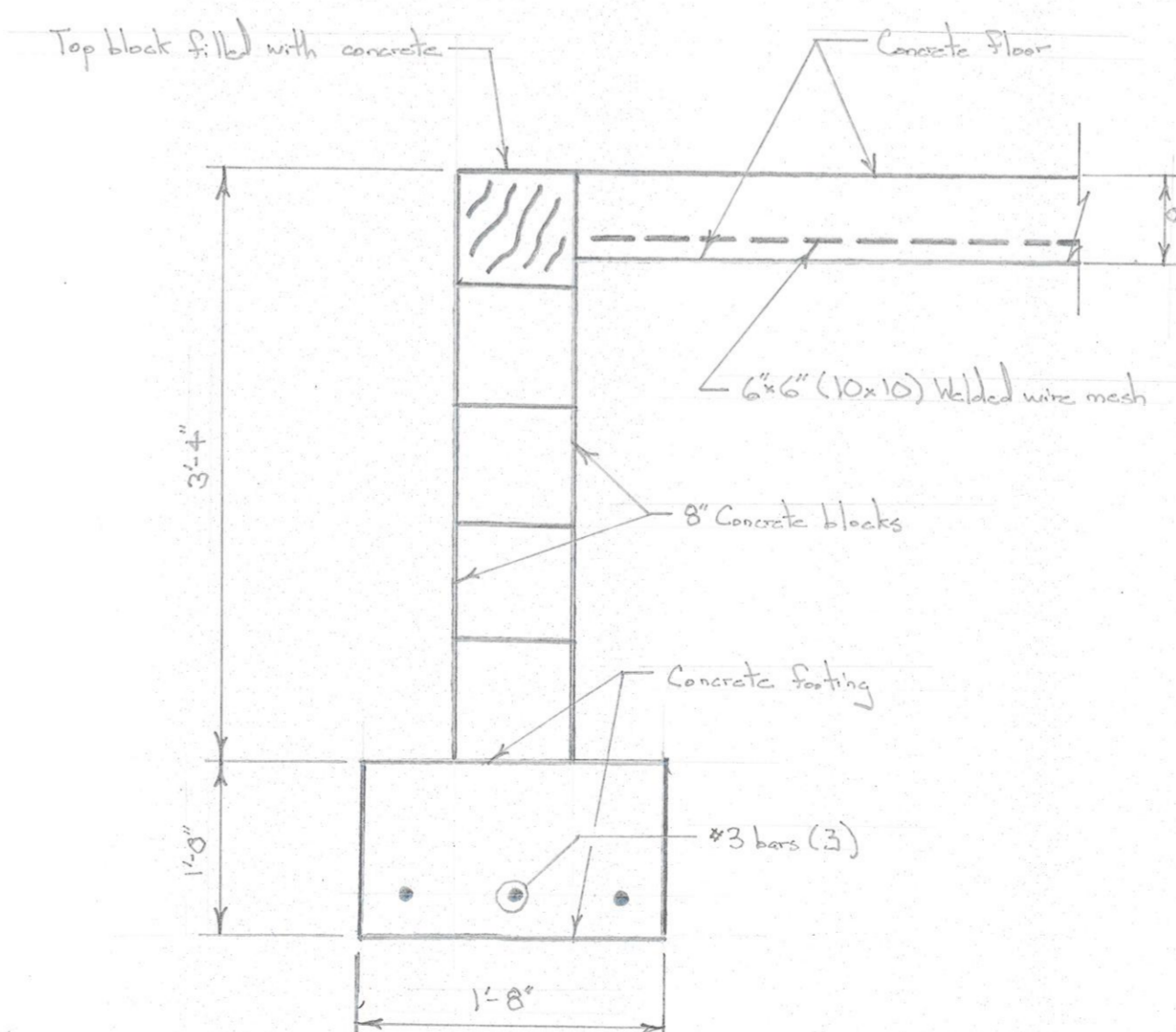
SCOPE OF PROJECT

- Demolish crew building (SB#466) on SGL #245. The building is a one-story metal sided, metal frame structure with a concrete floor slab and block/concrete footing. Burning or blasting is not permitted.
- The floor slab is to be broken up and removed from the site. The concrete block / concrete footing must also be removed and broken up. Broken pieces of concrete and masonry are to be disposed of off-site.
- The PGC will arrange for disconnection of the gas, electric and phone lines from the building. The PGC will also remove the computer antenna from the building.
- The Contractor is responsible for careful disconnection of the water and septic system lines, plugging the lines and marking the locations of the ends of the lines.
- Remove and properly dispose of all interior items, trash and debris at the site.
- The Contractor is allowed to salvage any building materials (metal siding, metal frame, doors, etc.) to offset the costs of the project.
- All building components, contents, trash and litter must be removed from the site. Demolition debris and trash must be disposed of at a DEP approved landfill.
- After the building floor slab and footings are removed, stabilize the disturbed area by spreading 120 tons of #2A coarse aggregate to a depth of six inches (minimum) over the old building footprint. The voids from the removal of the building footings must also be filled with the #2A coarse aggregate. Grade the stone smooth; compaction is not required.



SITE PLAN

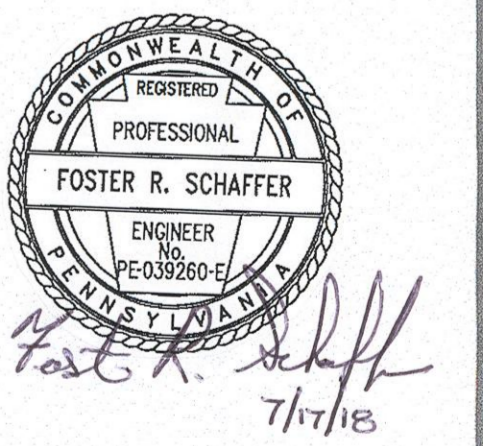
No Scale



FOUNDATION / FLOOR DETAIL

Scale: 1/4" = 1'-0"

Note: Finish concrete and rebar at piers for building columns.



PENNSYLVANIA GAME COMMISSION		
STATE GAME LANDS #245	EAST FINLEY TWP.	WASHINGTON CO.
DEMOLITION OF CREW HQ BUILDING (SB #446)		
LOCATION MAP, SITE PLAN, DETAILS AND NOTES		
REVISIONS	PROJECT NO.	PGC 245-18-1
▲	DRAWN BY:	SS
▲	DATE:	7/17/18
▲	SHEET NO.	1 OF 1