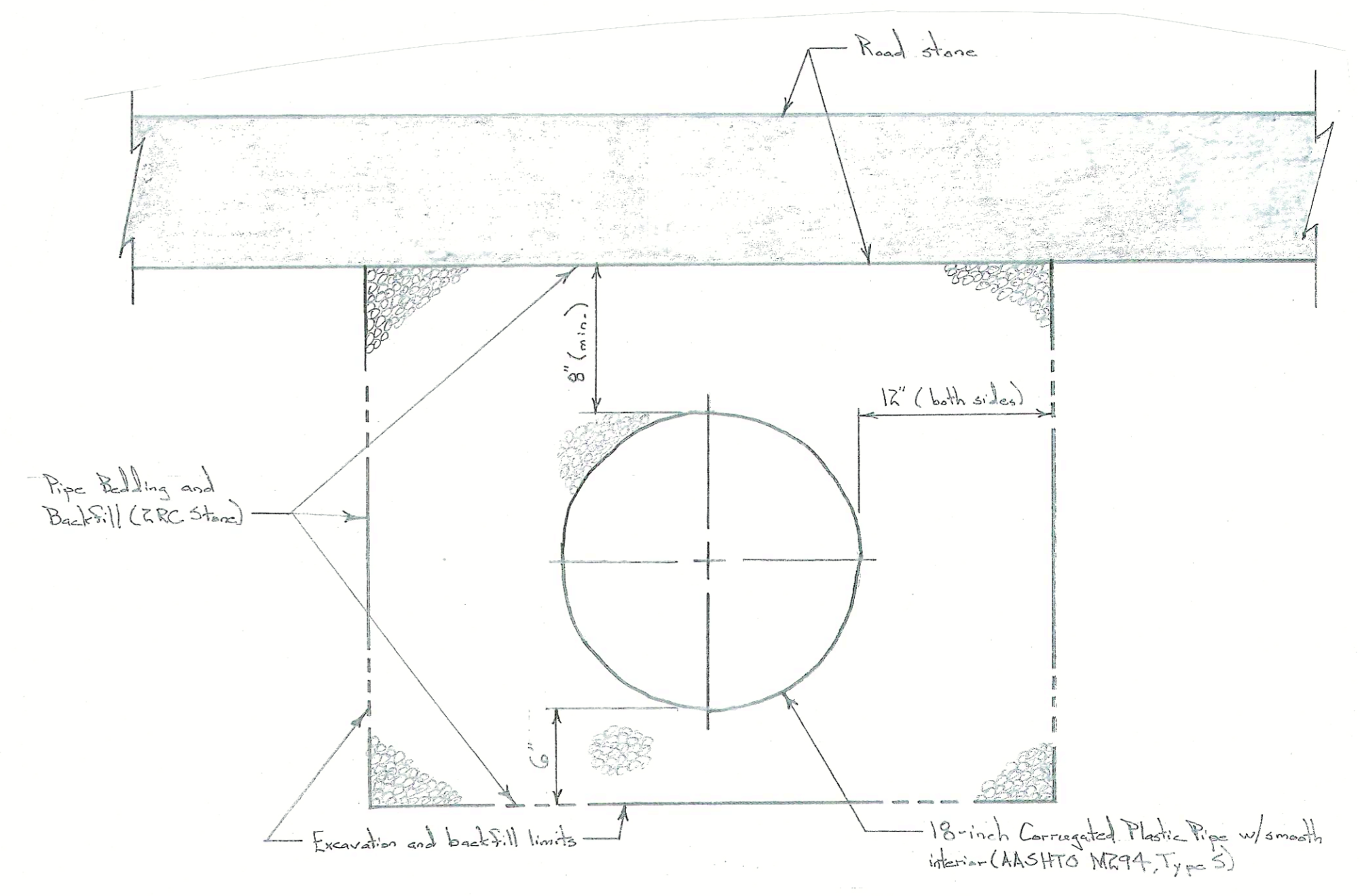


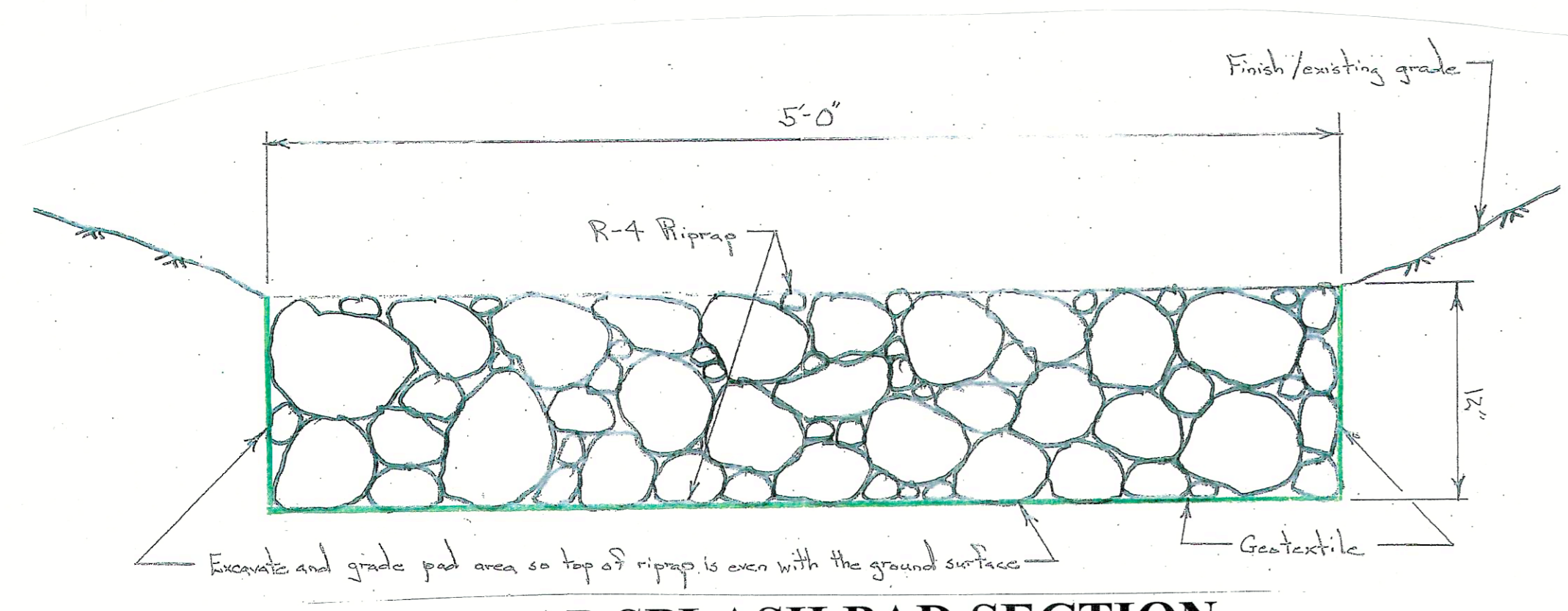
DRAINAGE PIPE PLAN

Scale: 1/4 in. = 1 ft.



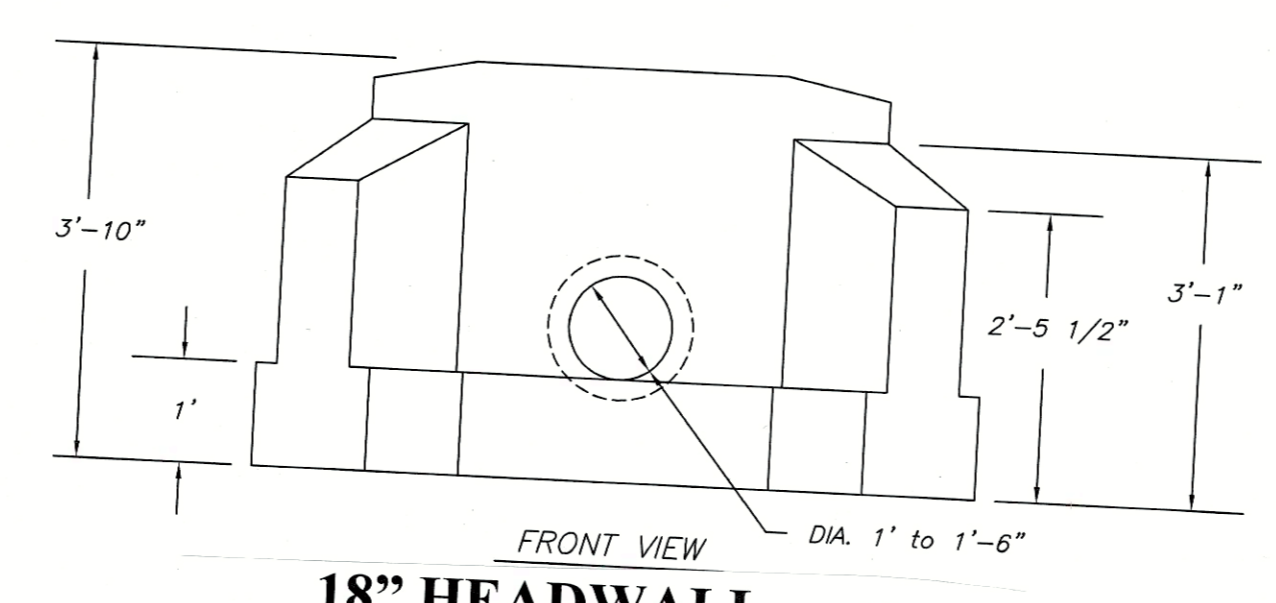
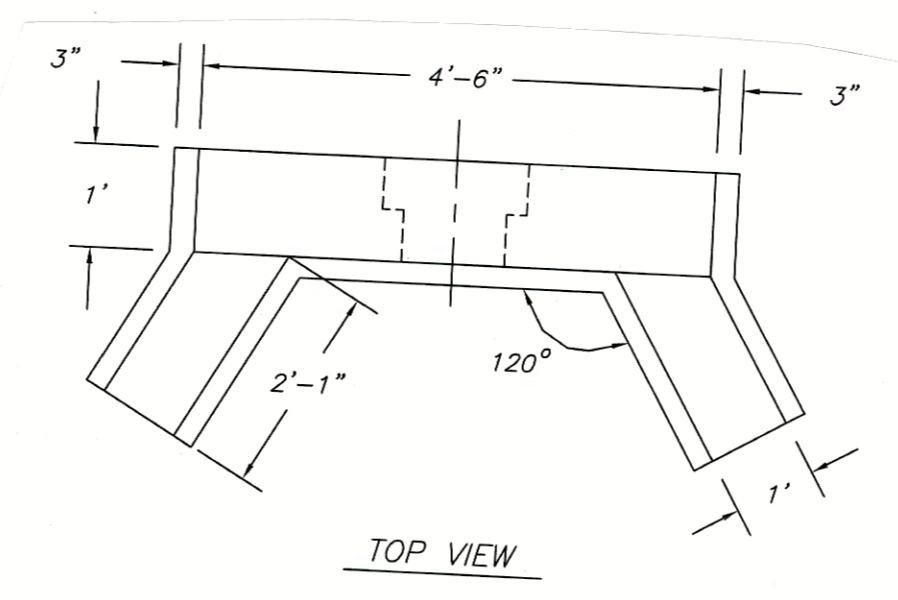
DRAINAGE PIPE SECTION

Scale: 1-1/2 in. = 1 ft.



RIPRAP SPLASH PAD SECTION

Scale: 1-1/2 in. = 1 ft.



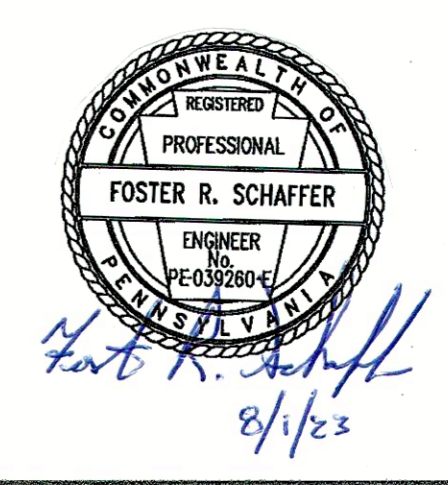
**18" HEADWALL
HEADWALL DETAILS**

No Scale

- NOTES:
1. MINIMUM 4,000 P.S.I. CONCRETE AT 28 DAYS WITH 5.5% A.E.
 2. REINFORCEMENT-A.S.T.M. A615 GRADE 60, MINIMUM 1 1/2" COVER
 3. ALL EXPOSED EDGES ARE CHAMFERED 1"
 4. MATERIAL AND CONSTRUCTION SHALL COMPLY WITH PENN. D.O.T. PUB. 408
 5. APPROX. WEIGHTS :
18" = 4,000 LBS.

DRAINAGE PIPE NOTES

1. The minimum fall in the new drainage pipes is 3-inches over a 10-foot length (slope of 0.025).
2. Pipes should cross the road to suit field conditions and existing drainage paths. New pipes are 30-foot long. Pipes should cross the road or on a slight angle to suit flow patterns.
3. Perform minor grading at the inlet and outlet ends of the new and existing drainage pipes so that flow smoothly enters and exits the pipes.
4. Minimum cover over the new drainage pipes is 12-inches.
5. The depth of placement of the new drainage pipes can vary to meet field conditions. The downstream ends of the pipes can be deeper to meet field conditions and slope requirements.
6. The PGC has a supply of new 18-inch diameter corrugated plastic pipes stockpiled at the project site. There are 45 (forty-five) 20-foot sections of pipe available in this stockpile.



PENNSYLVANIA GAME COMMISSION		
SQL #295	LOGAN TWP.	CLINTON CO.
CHERRY RUN ROAD MAINTENANCE PROJECT		
DRAINAGE PIPE DETAILS		
REVISIONS	PROJECT NO.	PGC-295-23-01
▲	DRAWN BY:	FS
▲	DATE:	8/1/23
▲	SHEET NO.	3 OF 3