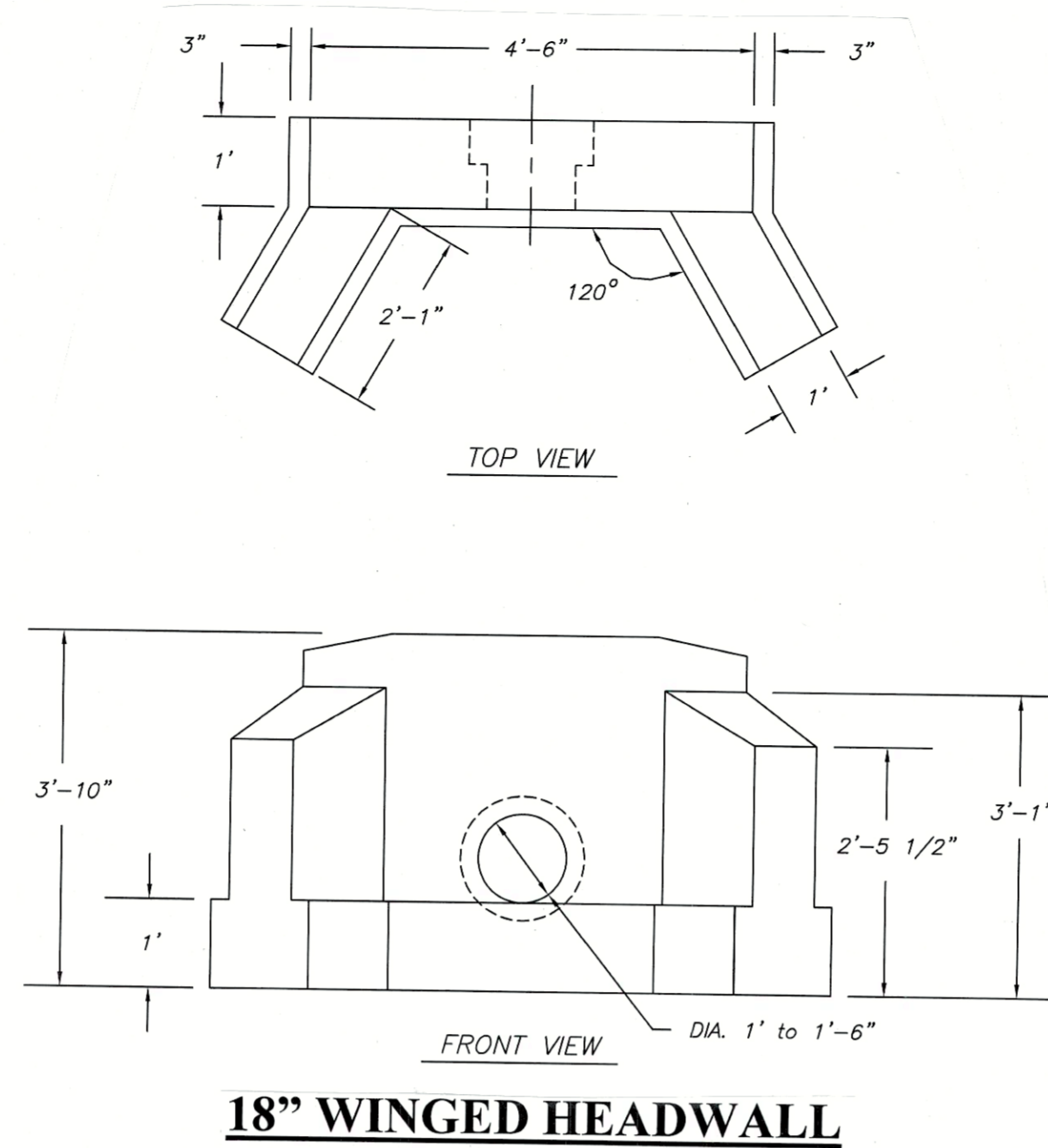


DRAINAGE PIPE PLAN

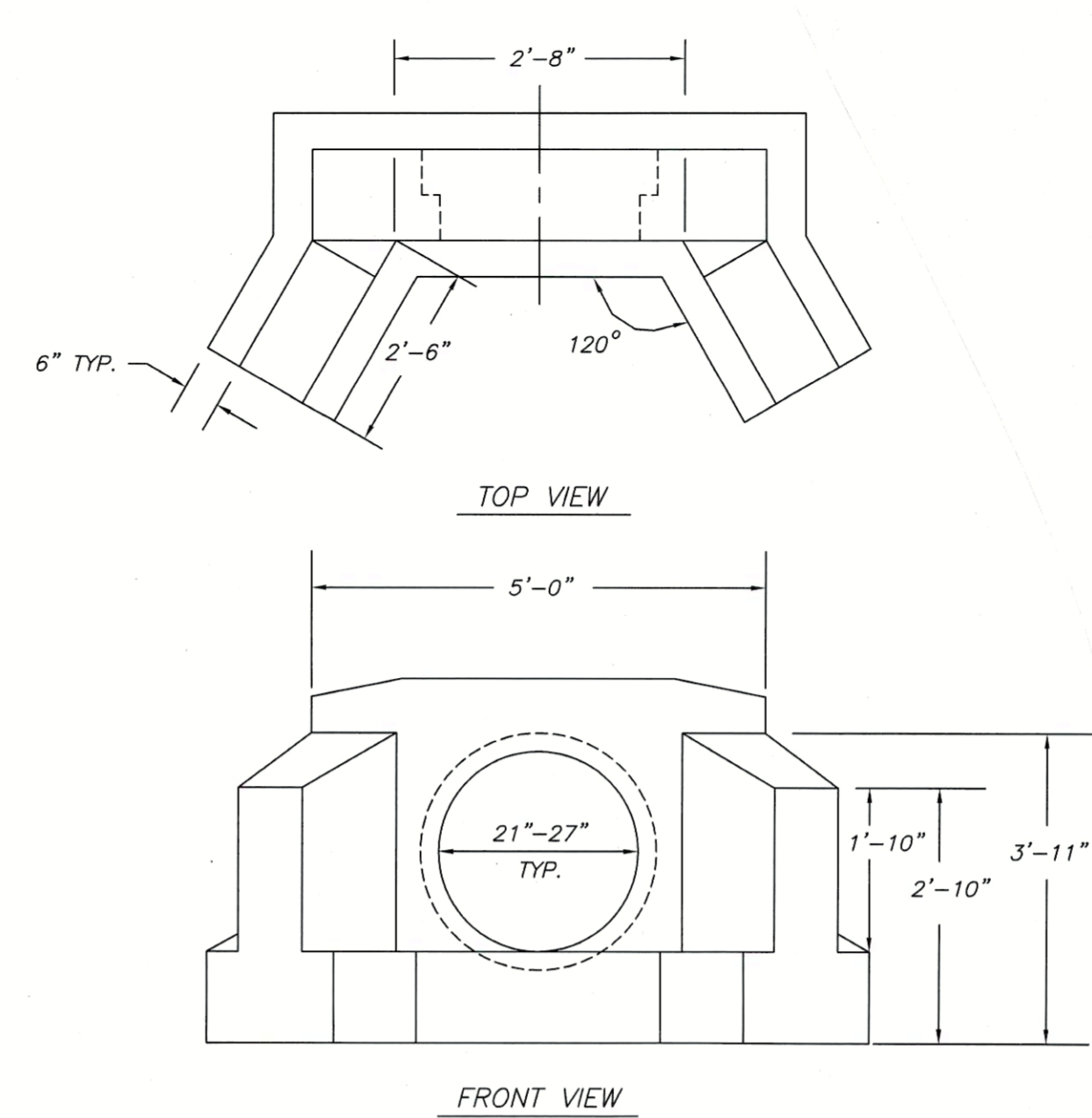
Scale: 1/2 in. = 1 ft.

DRAINAGE PIPE NOTES

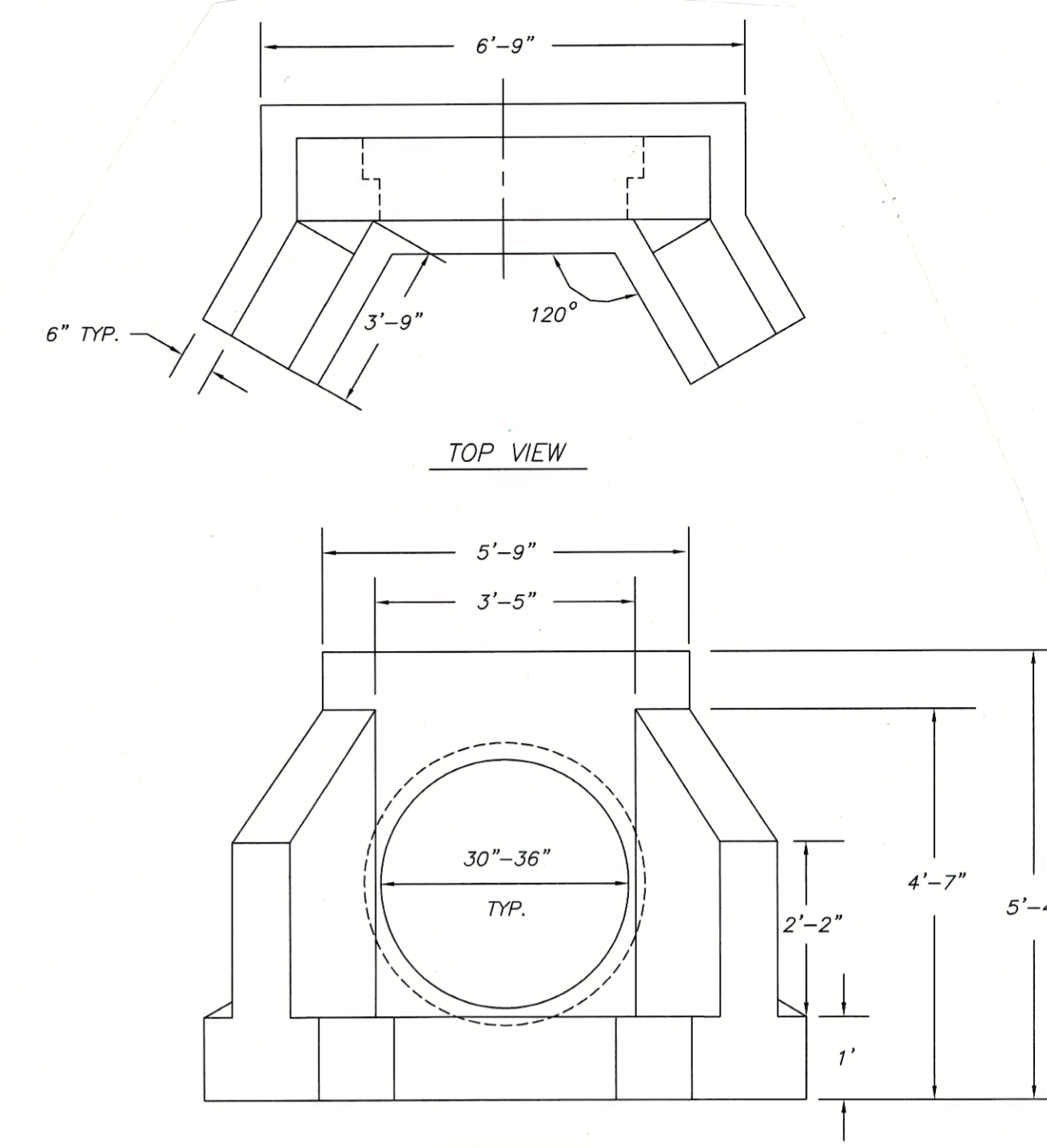
1. The minimum fall in the new drainage pipes is 3-inches over a 10-foot length (slope of 0.025).
2. Pipes should cross the road to suit field conditions and existing drainage paths. New pipes are 20-foot long. Pipes should cross perpendicularly to the road or on a slight angle to suit flow patterns.
3. Perform minor grading at the inlet and outlet ends of the new and existing drainage pipes so that flow smoothly enters and exits the pipes.
4. Minimum cover over the new drainage pipes is 12-inches.
5. The depth of placement of the new drainage pipes can vary to meet field conditions. The downstream ends of the pipes can be deeper to meet field conditions and slope requirements.
6. The PGC has a stockpile of new 18-inch diameter corrugated plastic pipes stockpiled in a parking area along the road at Sta. 51+84. There are sixteen 20-foot sections of pipe available in this stockpile. There is also approximately 350 tons of #2A coarse aggregate stockpiled in the same parking area. This stone should be used for pipe bedding and backfill or road surface stone.



18" WINGED HEADWALL



24" WINGED HEADWALL

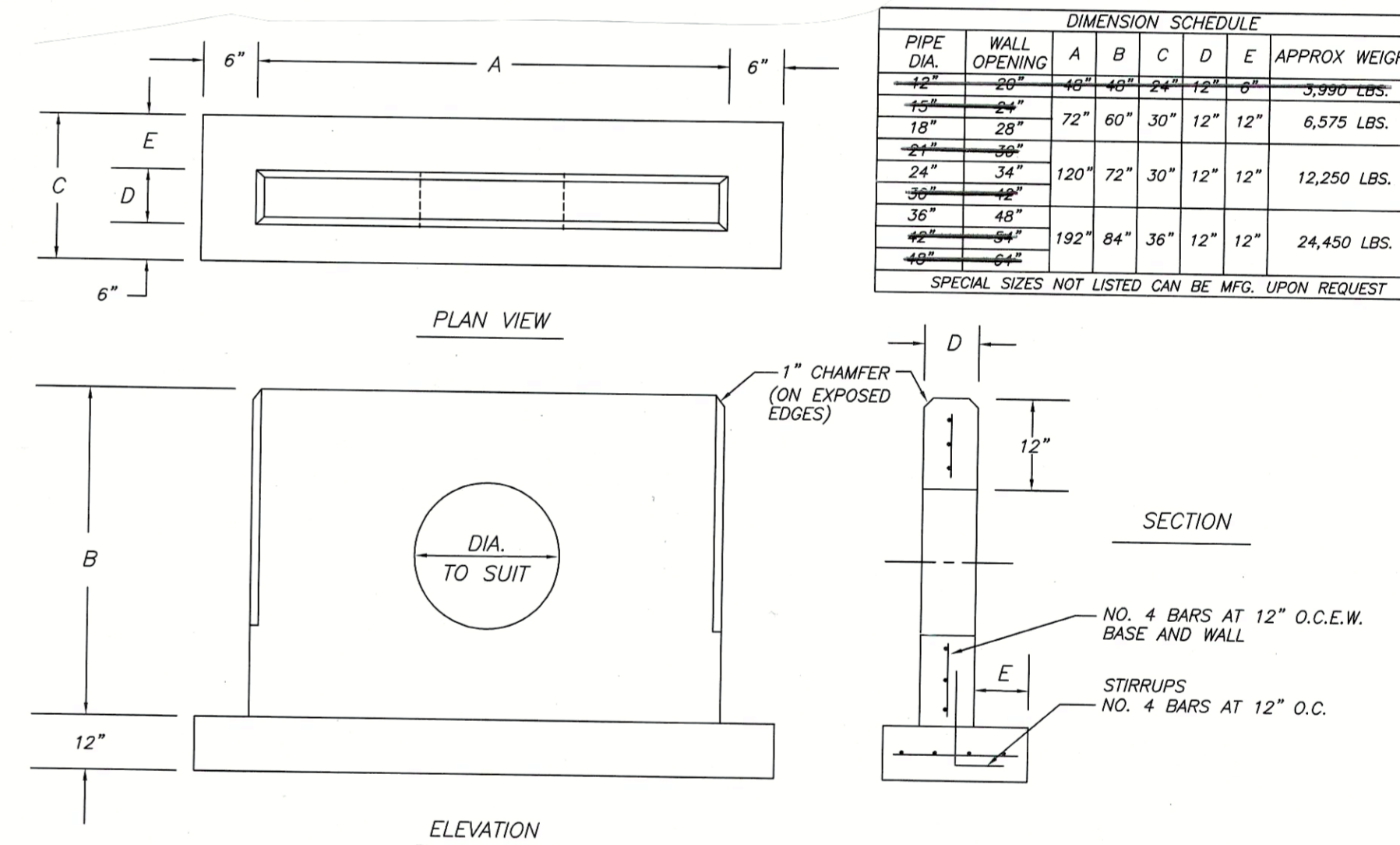


36" WINGED HEADWALL

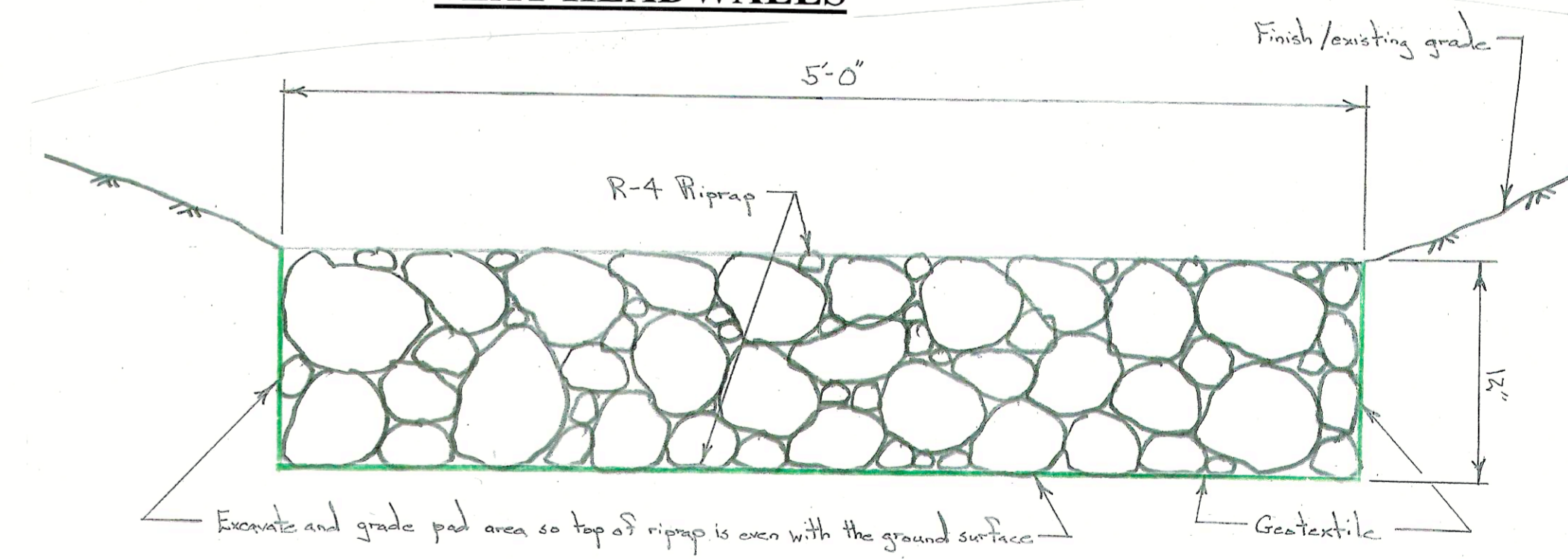
- NOTES:
1. MINIMUM 4,000 P.S.I. CONCRETE AT 28 DAYS WITH 5.5% A.E.
 2. REINFORCEMENT-A.S.T.M. A615 GRADE 60, MINIMUM 1 1/2" COVER
 3. ALL EXPOSED EDGES ARE CHAMFERED 1"
 4. MATERIAL AND CONSTRUCTION SHALL COMPLY WITH PENN. D.O.T. PUB. 408
 5. APPROX. WEIGHTS:
18" = 4,000 LBS.
24" = 5,200 LBS.
36" = 8,150 LBS.

HEADWALL DETAILS

No Scale

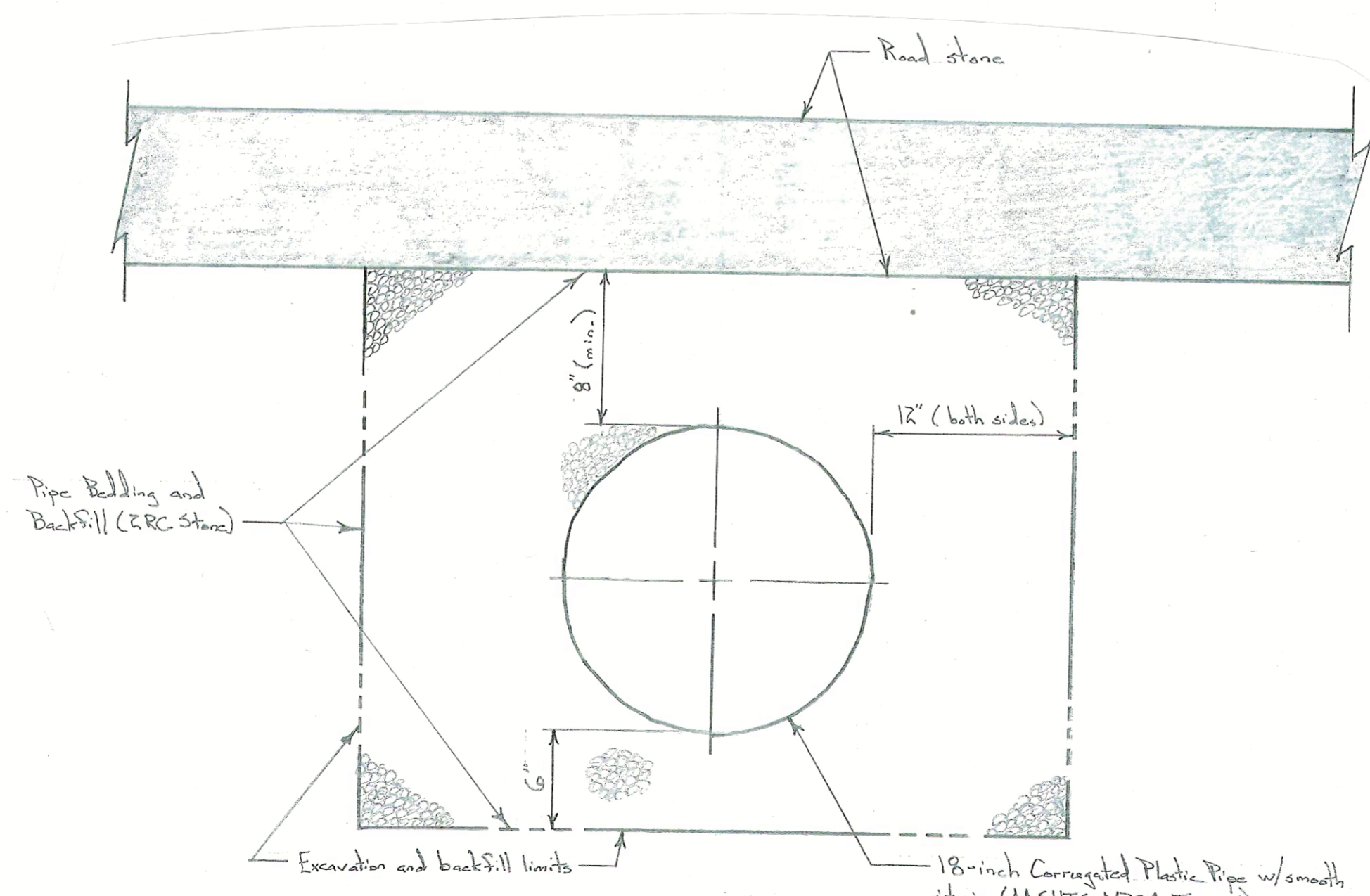


FLAT HEADWALLS



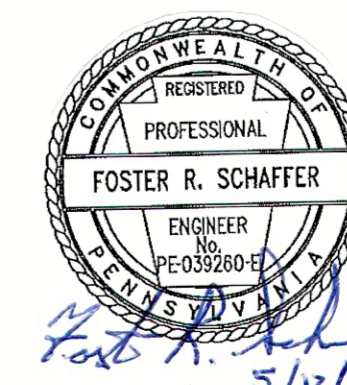
RIPRAP SPLASH PAD SECTION

Scale: 1-1/2 in. = 1 ft.



DRAINAGE PIPE SECTION

Scale: 1-1/2 in. = 1 ft.



PENNSYLVANIA GAME COMMISSION		
SG# 112	HENDERSON & MILLER TWSPS.	HUNTINGDON CO.
BIG PARKING LOT ROAD MAINTENANCE PROJECT		
DRAINAGE PIPE DETAILS		
REVISIONS	PROJECT NO.	PGC-112-23-01
▲	DRAWN BY:	SS
▲	DATE:	5/12/23
▲	SHEET NO.	3 OF 3