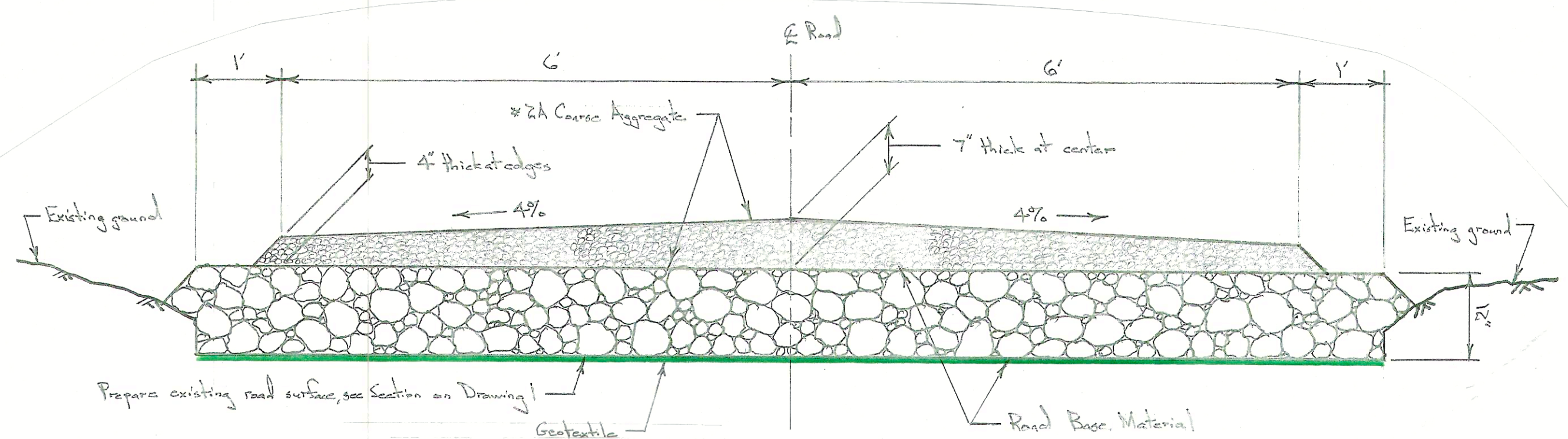


**ROAD SECTION (STA. 0+00 TO STA. 3+51)**

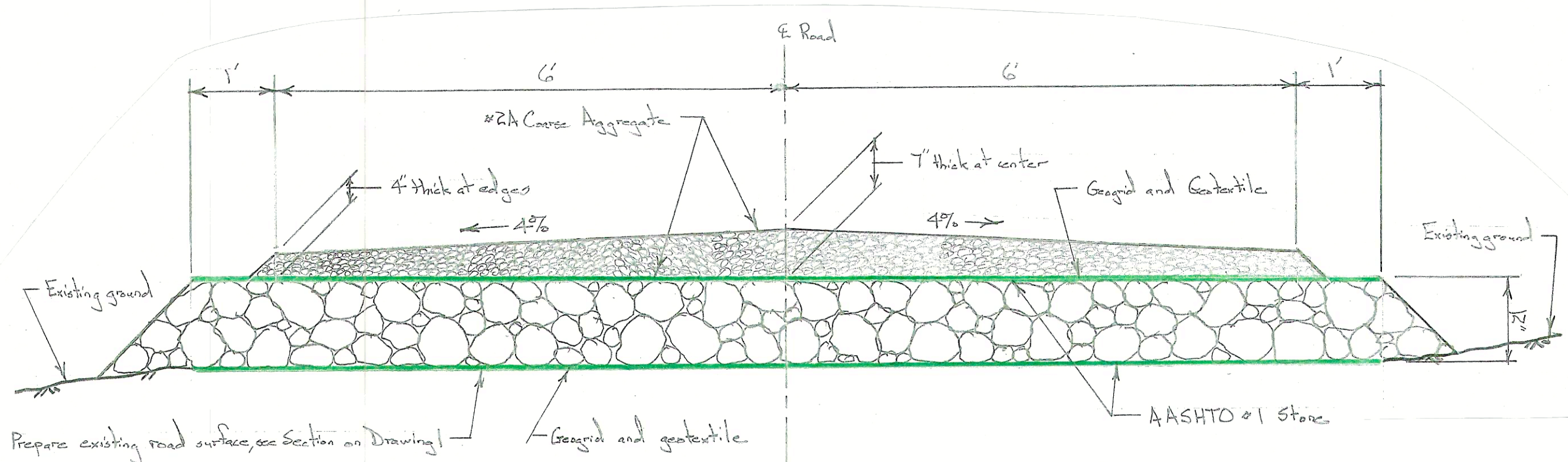
Scale: 3/4 in. = 1 ft.



**ROAD SECTION (STA. 3+51 TO STA. 35+44)**

Scale: 3/4 in. = 1 ft.

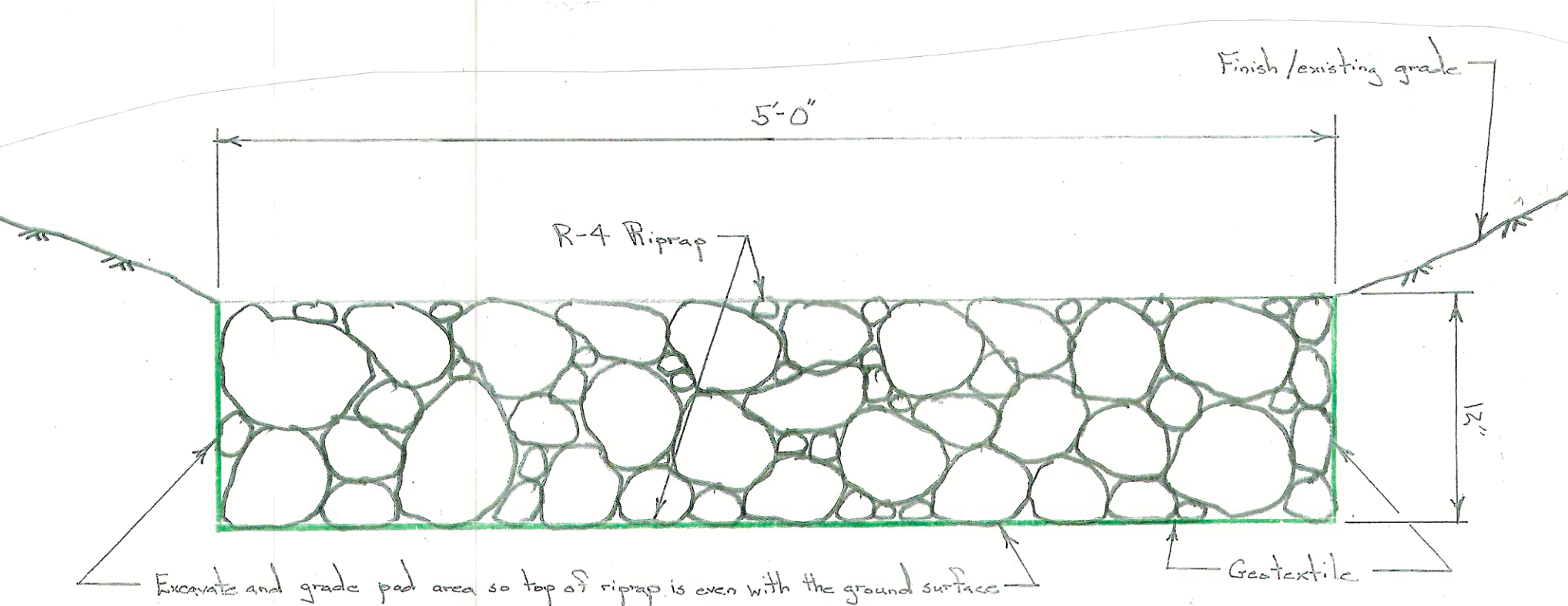
Note: Construct French Mattress drainage features according to station locations within this reach of the road.



**FRENCH MATTRESS SECTION**

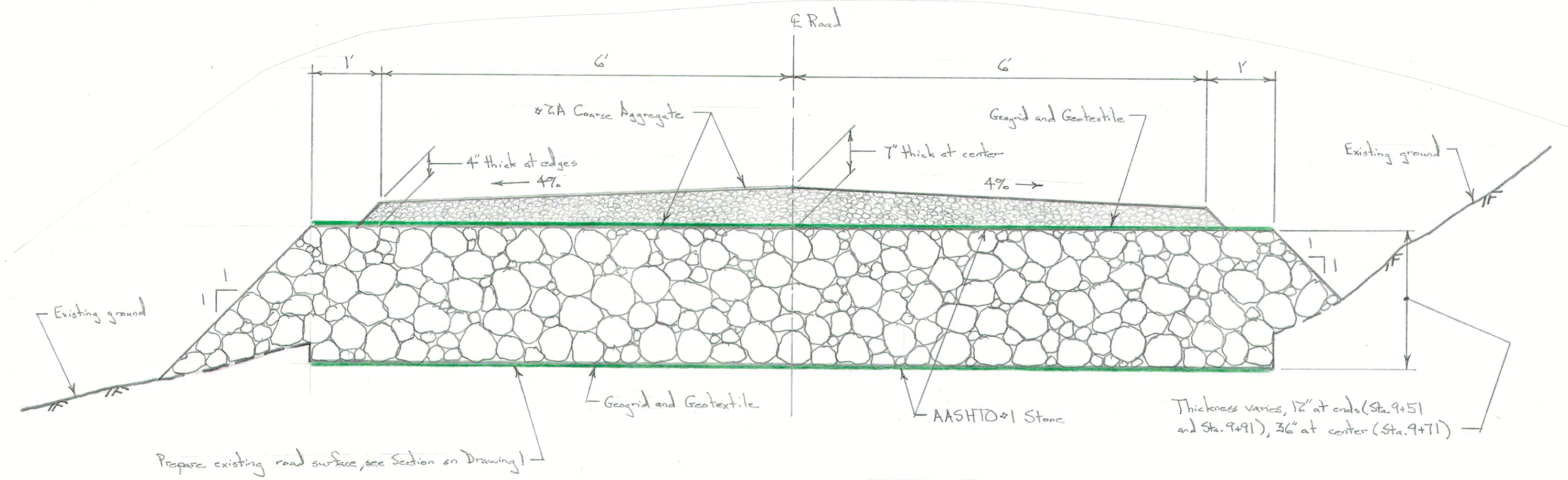
Scale: 3/4 in. = 1 ft.

Note: Use this section at the following locations; Sta. 13+26 to Sta. 13+91 and Sta. 15+30 to Sta. 15+60.



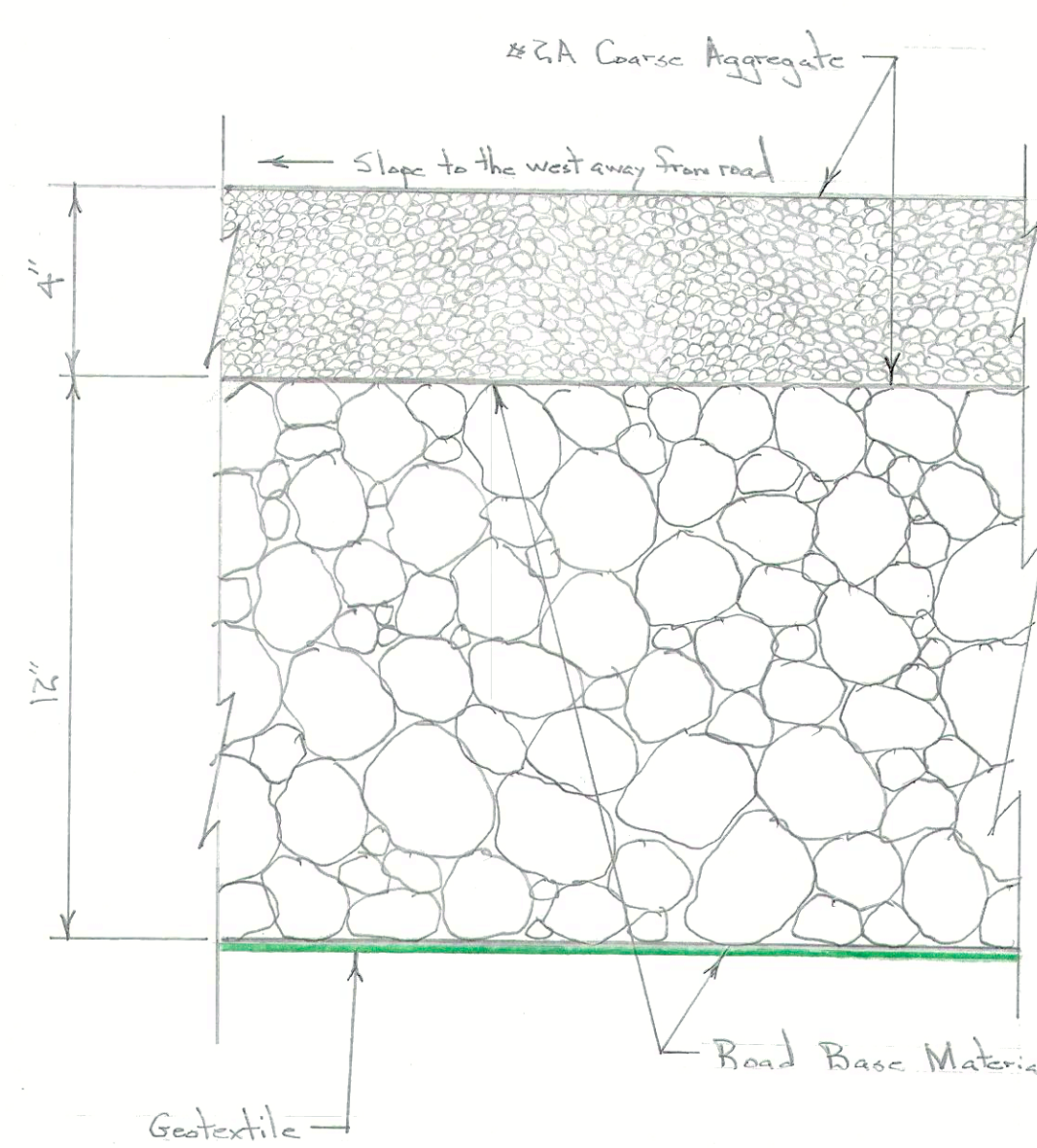
**RIPRAP SPLASH PAD DETAIL**

Scale: 1-1/2 in. = 1 ft.



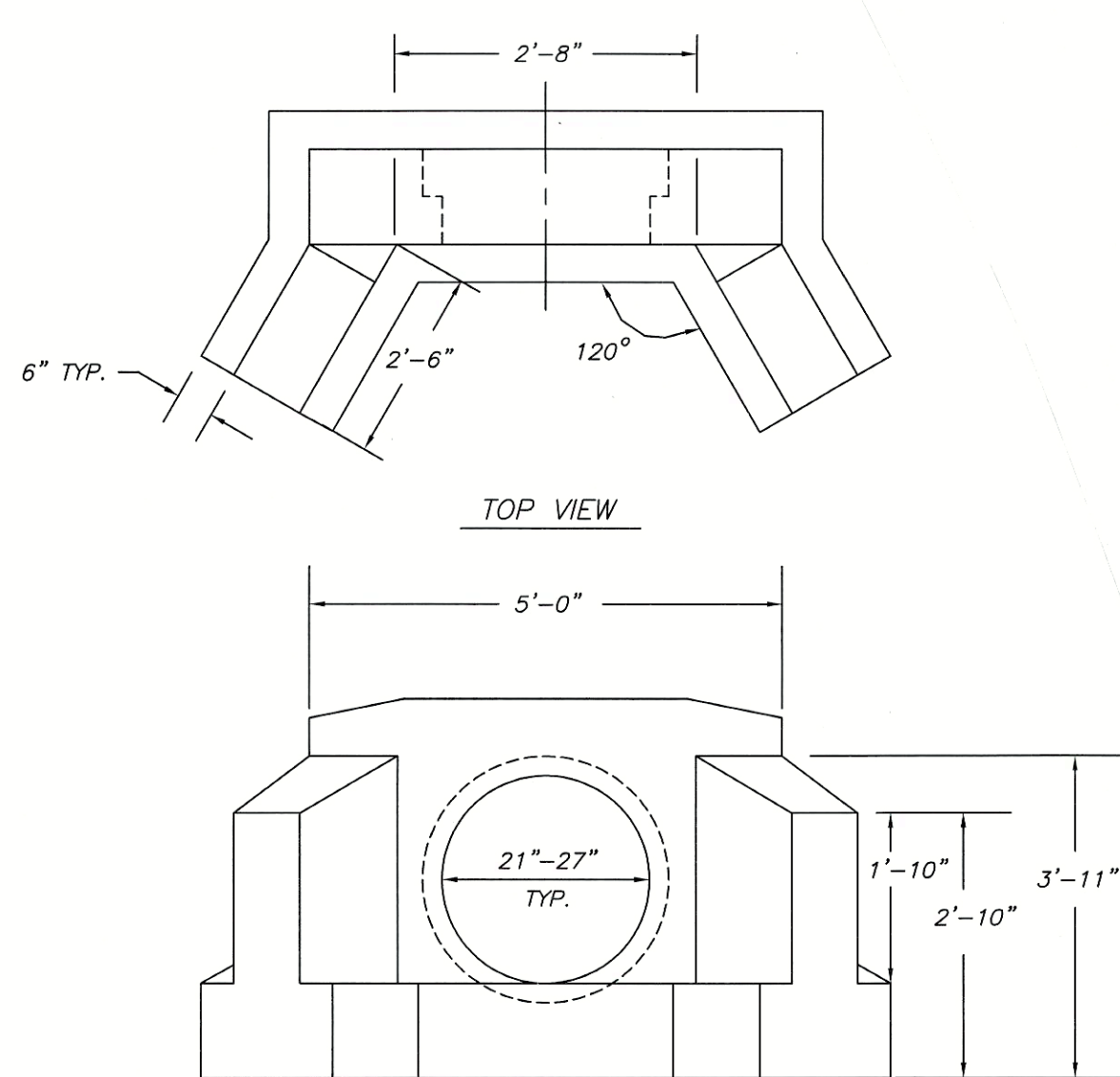
**FRENCH MATTRESS SECTION (STA. 9+51 TO STA. 9+91)**

Scale: 3/4 in. = 1 ft.



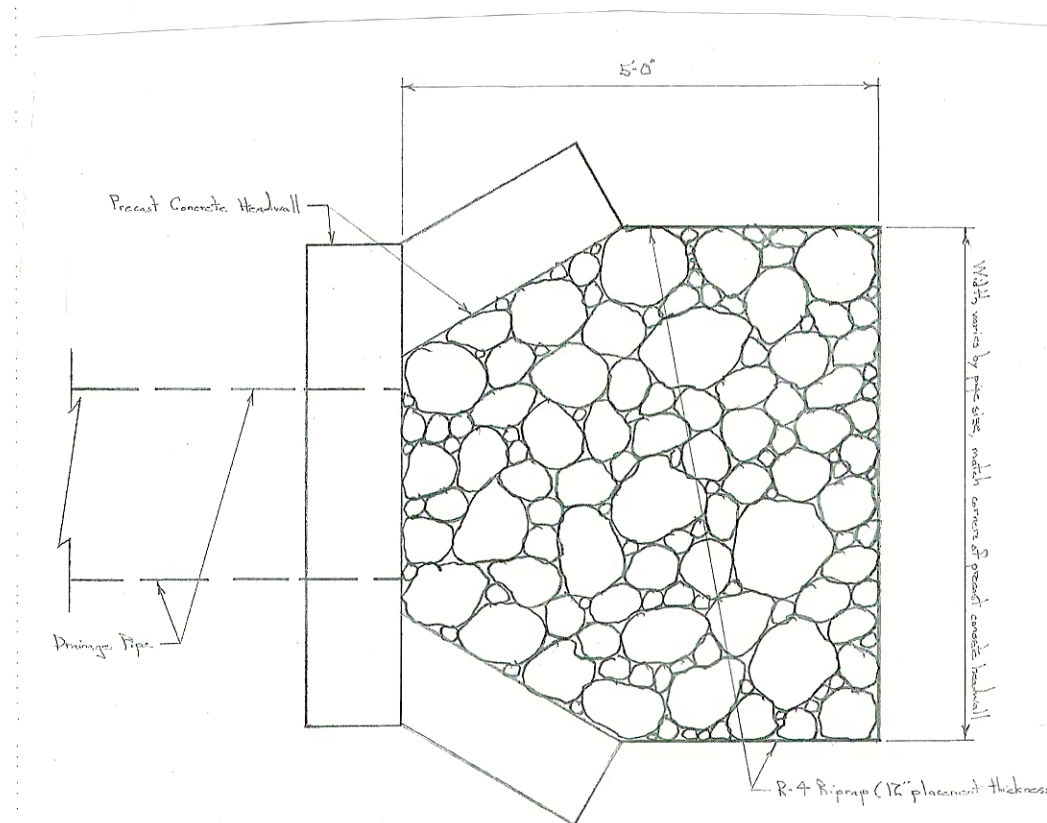
**PASSING LANE SECTION**

Scale: 3 in. = 1 ft.



**HEADWALL DETAILS**

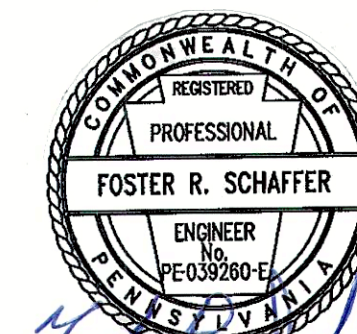
No Scale



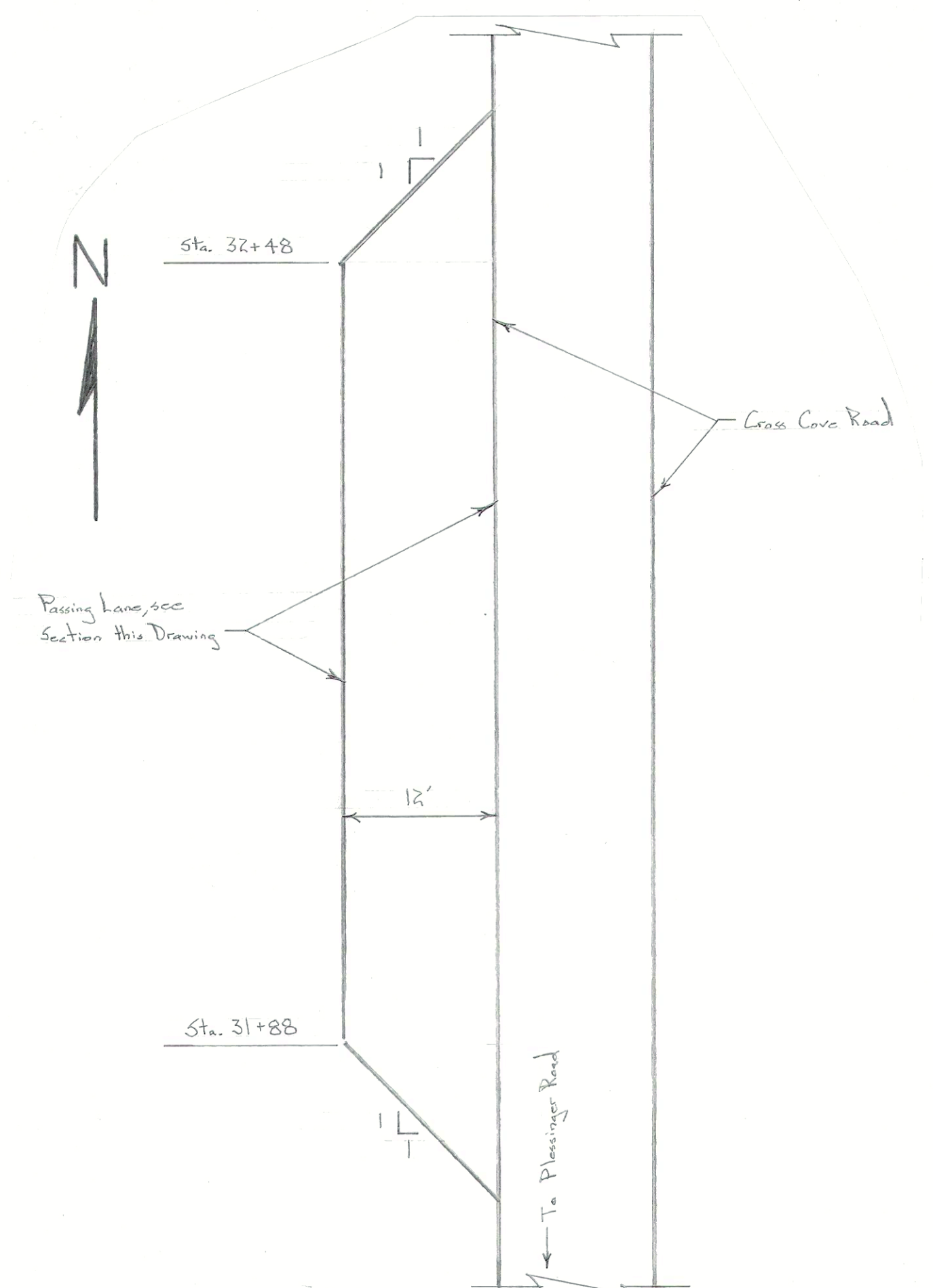
**RIPRAP PAD PLAN**

Scale: 1/2 in. = 1 ft.

- NOTES:
1. MINIMUM 4,000 P.S.I. CONCRETE AT 28 DAYS WITH 5.5% A.E.
  2. REINFORCEMENT-A.S.T.M. A615 GRADE 60, MINIMUM 1 1/2" COVER
  3. ALL EXPOSED EDGES ARE CHAMFERED 1"
  4. MATERIAL AND CONSTRUCTION SHALL COMPLY WITH PENN. D.O.T. PUB. 408
  5. APPROX. WEIGHTS: 24" = 5,200 LBS.



Foster R. Schaffer  
1/30/23



**PASSING LANE PLAN**

Scale: 1 in. = 10 ft.

PENNSYLVANIA GAME COMMISSION		
BRUSH CREEK TWP.	SQL #65	FULTON CO.
CROSS COVER ROAD MAINTENANCE PROJECT		
ROAD SECTIONS AND DETAILS		
REVISIONS	PROJECT NO.	PGC-65-23-01
▲	DRAWN BY:	FS
▲	DATE:	1/30/23
▲	SHEET NO.	2 OF 2