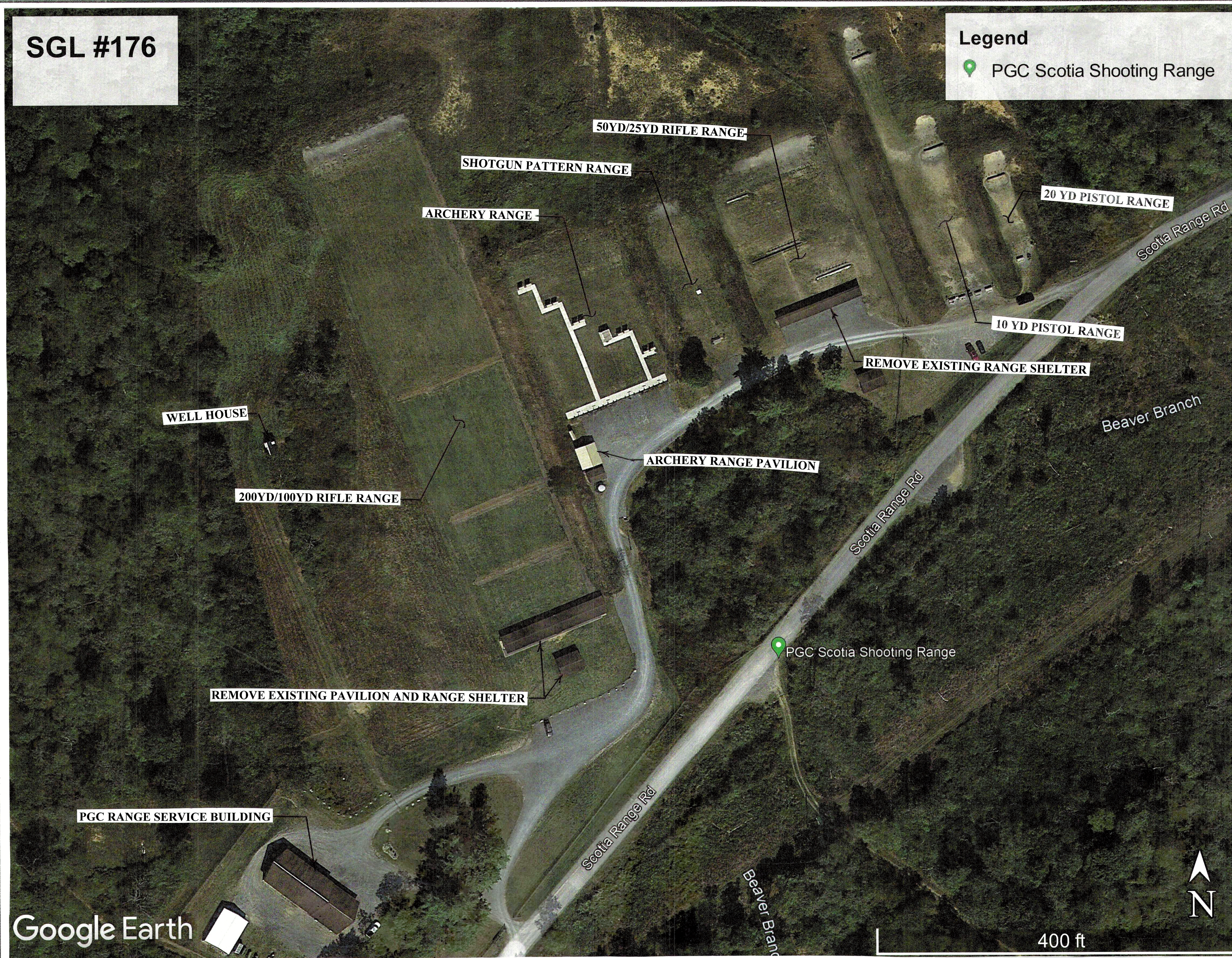


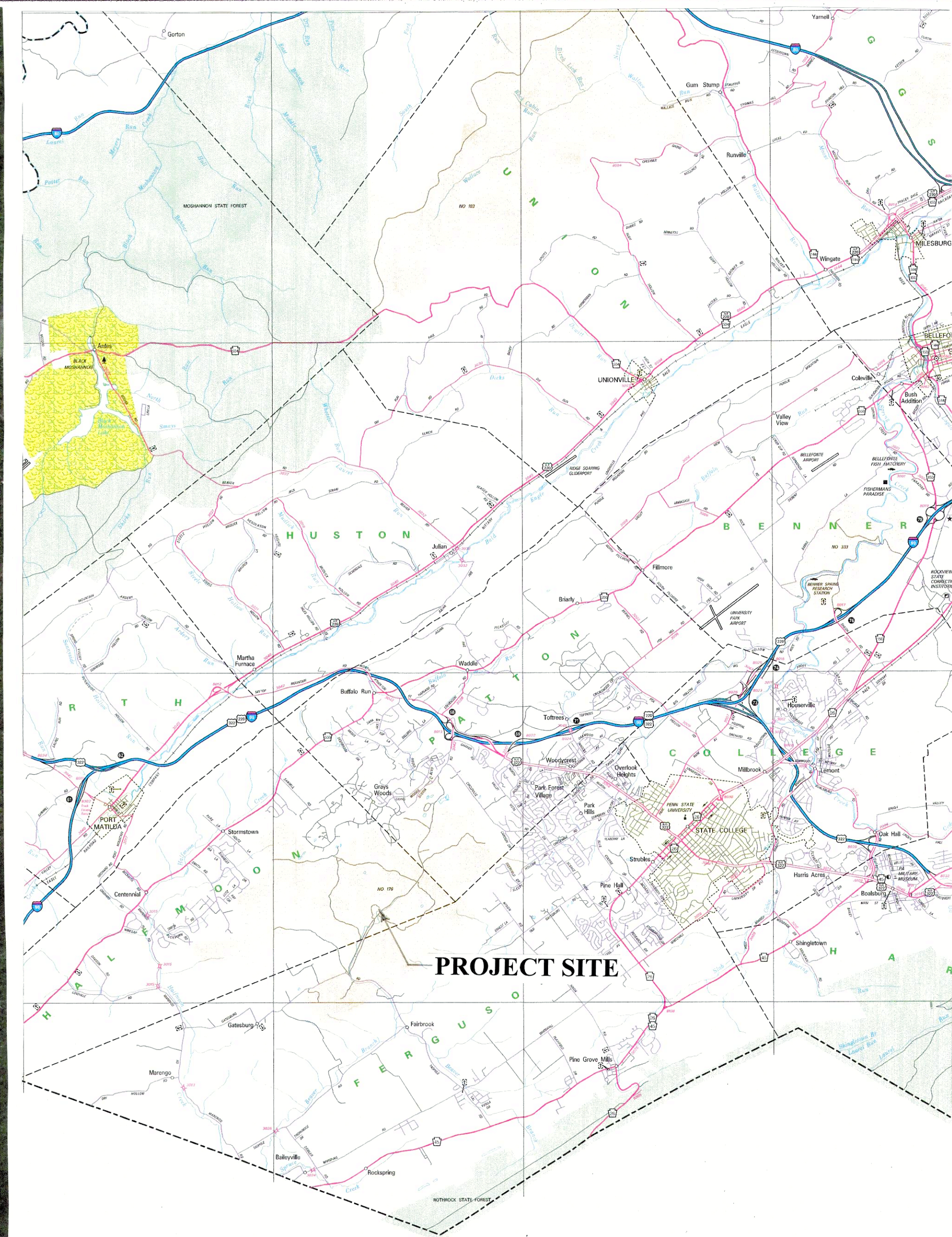
SGL #176

Legend

PGC Scotia Shooting Range



Google Earth



LOCATION MAP

PROJECT NOTES

- Access to the work site is from either the west or east using Scotia Range Road. Heavy hauling on Scotia Range Road is permitted with a strict speed limit of 15-MPH for gravel trucks and other heavy loads.
- The Contractor is responsible for controlling access to the site. The Contractor shall post signs and close gates to the project area.
- The Contractor shall maintain access to the range service building for PGC staff.
- The Contractor is responsible for all road bonding that may be required for heavy hauling on local and state roads to get to the project site.
- The Contractor is responsible for contacting PA One Call (8-1-1) at least three (3) business days prior to any earth moving activities or heavy hauling to ensure all utility lines are clearly identified.
- Damage to existing roads, trails and food plots caused by construction operations must be immediately repaired by the Contractor.
- This project is on state game lands; work is prohibited the following days.
 - All Saturdays in the months of October, November and December
 - All the days of the statewide bear season
 - The entire two weeks of the general firearms deer season
 - The opening day of the flintlock muzzleloader season
 - The opening day and all Saturdays during Spring turkey season including youth Spring gobbler
- The Contractor (including employees and sub-contractors) may not hunt during construction operations or in areas that are closed to the general public.
- Concrete Notes are found on Drawing 8 of 9.
- Handicapped Parking Sign Details are on Drawing 6 of 9.

BUILDING CODE ANALYSIS

SHOOTING STATION SHELTERS - SCOTIA RANGE, SGL #176, PHASE 1
HALFMOON TOWNSHIP, CENTER COUNTY

Scope: Construction of 11 shooting station shelters to service the four out of five shooting ranges at the Scotia Range Complex on SGL #176. The shooting station shelters are pole structures with metal panel roofs and concrete floor slabs ranging in size from 10' x 16' to 10' x 64'. Each 8' bay in the shelters is one shooting station.

Occupancy: There are a total of 37 shooting stations in the 11 shelters. Each shooting station can contain 2 occupants. Total occupancy for the shooting range complex is 74.

Governing Code: IBC 2018

Code Chapter Chapter Heading

3 Use and Occupancy Classification
303.4, Assembly Group A-3 for open pavilion area.

6 Types of Construction

Table 601, Type VB	Fire Resistance Rating
Structural Frame	0
Floor Construction	0
Roof Construction	0

11 Accessibility

1103.1 - Access to all shooting station shelters and target lines is provided. Handicapped designated parking spaces at all ranges with direct access to the shooting station shelters is provided. The range complex is 100% accessible.

13 Energy Efficiency

ECC Chapter 4, C402.1.1 Exemption (Low energy building - space not conditioned)

AERIAL PHOTO - RANGE SITE

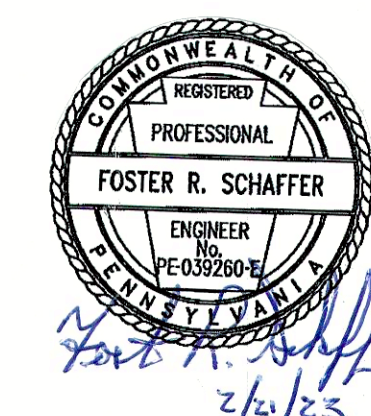
Scale: 1 in. = 63 ft. (Approx.)

EROSION & SEDIMENTATION CONTROL NOTES

- An E&S Permit is not required for this project; however, the Contractor shall notify the Centre County Conservation District at 814-355-6817 at least 7 days prior to work commencing at the site.
- The Contractor shall ensure that all construction vehicles (including material supplier vehicles) leaving the project area have mud buildup removed from the tires before exiting the site. All mud tracked onto Scotia Range Road shall be immediately removed from the roadway.
- Disturbed earth areas not receiving other surface treatment shall be stabilized with seed, lime, fertilizer and mulch immediately after construction is completed.
- Clean all equipment and vehicles thoroughly (especially the undercarriage and wheels) before they are brought to the site to prevent the spread of invasive species.
- All building materials and wastes must be removed from the site and recycled or disposed of in accordance with DEP's Solid Waste Management Regulations at 25 PA Code 260.1 et seq., 271.1 and 287.1 et seq. No building wastes or unused building materials shall be burned, buried, dumped or discharged at the site.
- Permanent stabilization is defined as minimum uniform 70% perennial vegetative cover or another means, with a density capable of resisting accelerated erosion and sedimentation.

DRAWING INDEX

- | | |
|--------|---------------------------------------------------|
| 1 of 9 | Location Map, Site Photo and Notes |
| 2 of 9 | Archery Range Plan and Details |
| 3 of 9 | Archery Target Station Details |
| 4 of 9 | Shotgun Pattern Range Plan and Details |
| 5 of 9 | 50YD / 25YD Rifle Range Plan |
| 6 of 9 | 50YD / 25YD Rifle Range Sections |
| 7 of 9 | 10YD / 20YD Pistol Range Plan and Sections |
| 8 of 9 | Shooting Station Shelter and Parking Area Details |
| 9 of 9 | Target Line Details and Fence Plan |



PENNSYLVANIA GAME COMMISSION

SGL #176 HALFMOON TWP. CENTRE CO.
SCOTIA RANGE COMPLEX RENOVATION PROJECT, PHASE 1
LOCATION MAP, SITE PHOTO AND NOTES

REVISIONS	PROJECT NO.	PGC-176-23-01
▲	DRAWN BY:	JS
▲	DATE:	2/21/23
▲	SHEET NO.	1 OF 9