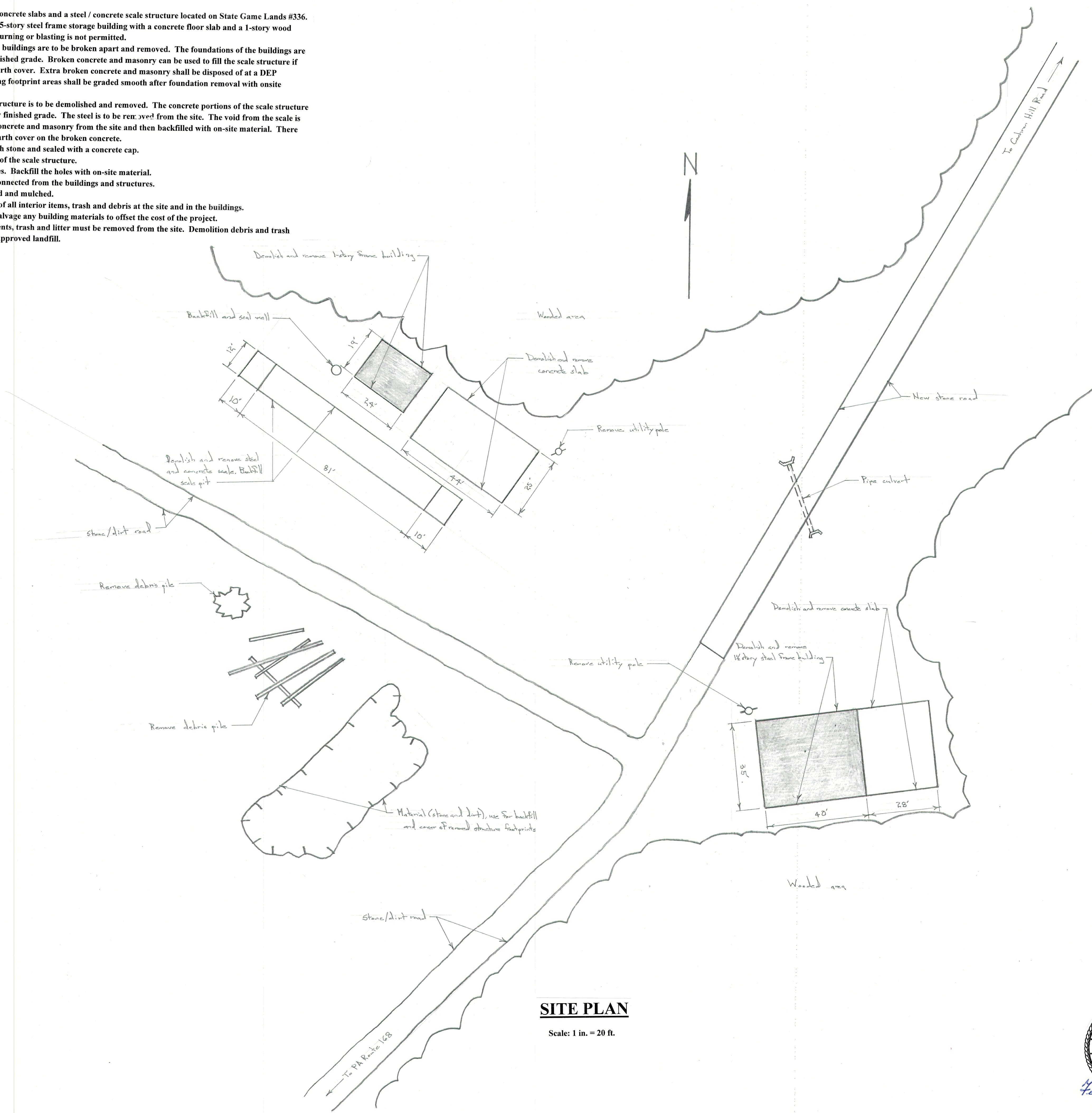


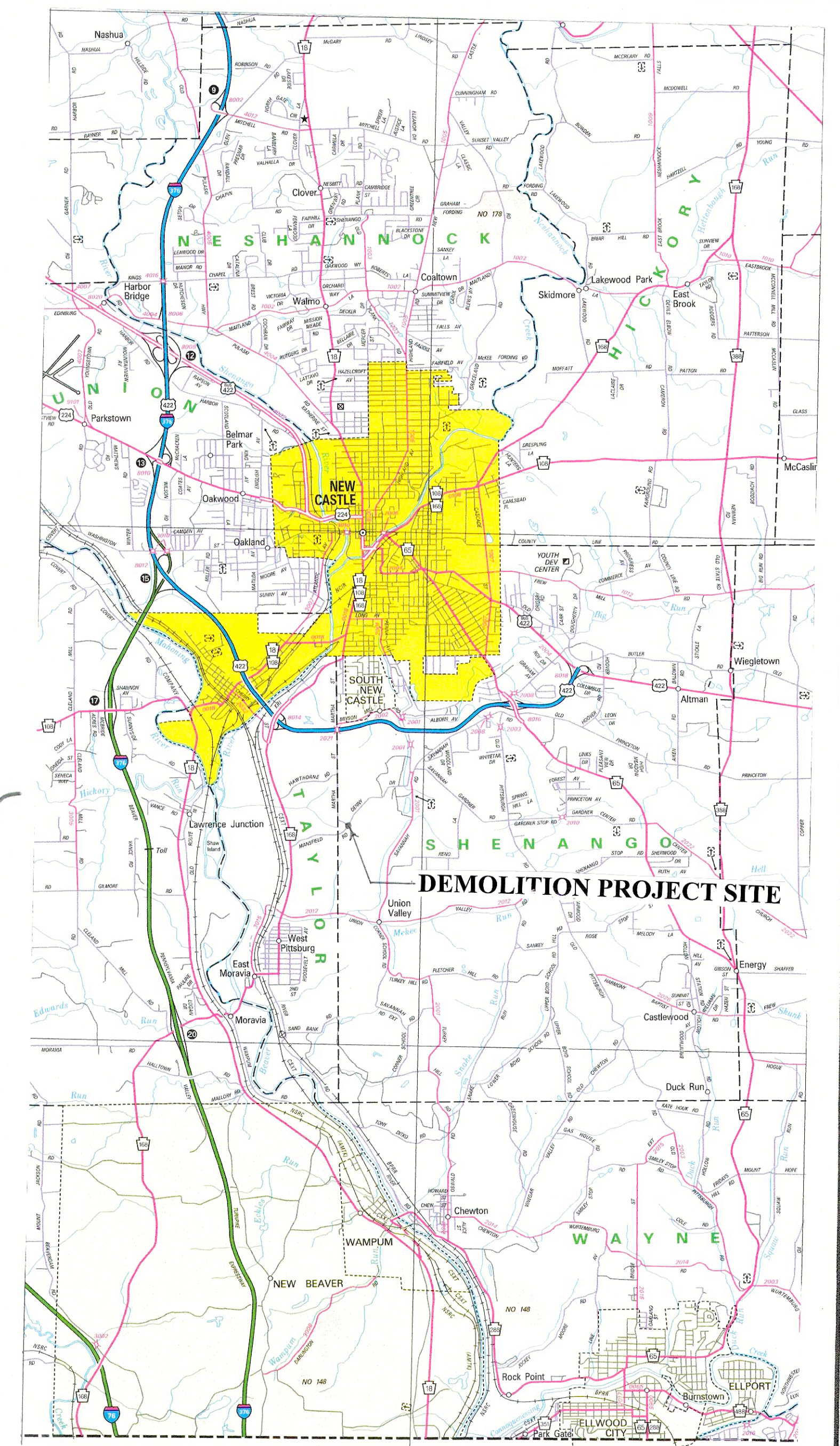
SCOPE OF PROJECT

- Demolish two buildings, two concrete slabs and a steel / concrete scale structure located on State Game Lands #336. The two buildings include a 1.5-story steel frame storage building with a concrete floor slab and a 1-story wood frame scale house building. Burning or blasting is not permitted.
- The concrete floor slabs of the buildings are to be broken apart and removed. The foundations of the buildings are to be removed 2-feet below finished grade. Broken concrete and masonry can be used to fill the scale structure if there is at least 12-inches of earth cover. Extra broken concrete and masonry shall be disposed of at a DEP approved landfill. The building footprint areas shall be graded smooth after foundation removal with onsite material.
- The concrete and steel scale structure is to be demolished and removed. The concrete portions of the scale structure are to be removed 2-feet below finished grade. The steel is to be removed from the site. The void from the scale is to be backfilled with broken concrete and masonry from the site and then backfilled with on-site material. There must be at least 12-inches of earth cover on the broken concrete.
- The well is to be backfilled with stone and sealed with a concrete cap.
- Remove the debris piles south of the scale structure.
- Remove both of the utility poles. Backfill the holes with on-site material.
- All utility lines have been disconnected from the buildings and structures.
- Disturbed areas shall be seeded and mulched.
- Remove and properly dispose of all interior items, trash and debris at the site and in the buildings.
- The Contractor is allowed to salvage any building materials to offset the cost of the project.
- All building components, contents, trash and litter must be removed from the site. Demolition debris and trash must be disposed of at a DEP approved landfill.

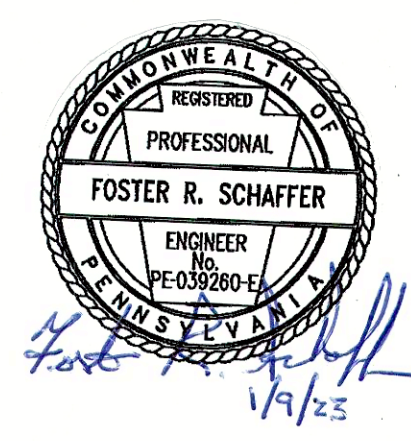


SITE PLAN

Scale: 1 in. = 20 ft.



LOCATION MAP



PENNSYLVANIA GAME COMMISSION		
SGL #336	SHENANGO TOWNSHIP	LAWRENCE CO.
WINE BUILDINGS DEMOLITION PROJECT		
LOCATION MAP, SITE PLAN AND SCOPE NOTES		
REVISIONS		PROJECT NO. PGC-336-23-01
△		DRAWN BY: JS
△		DATE: 1/9/23
△		SHEET NO. 1 OF 2