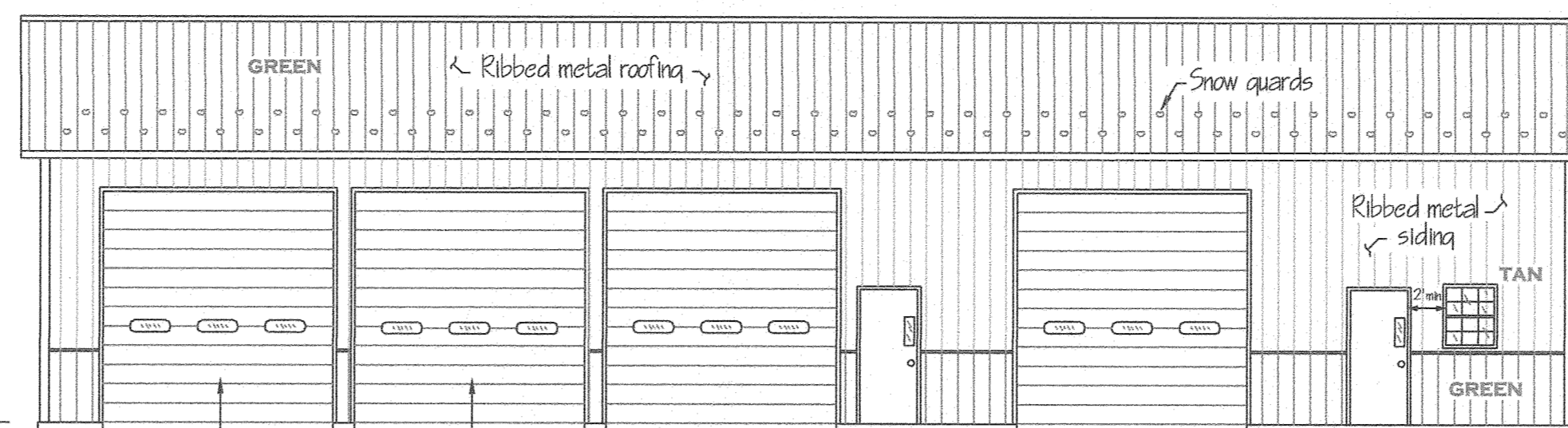
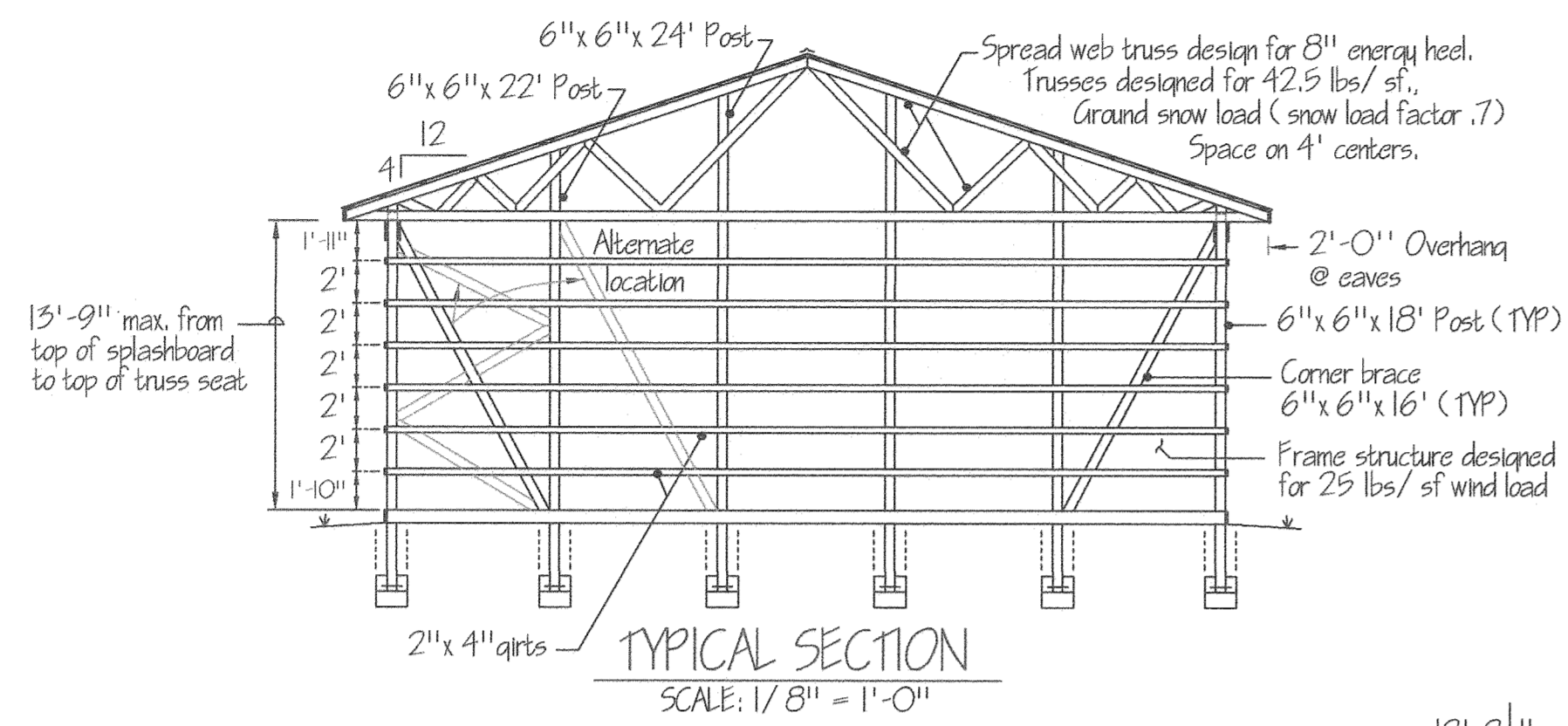


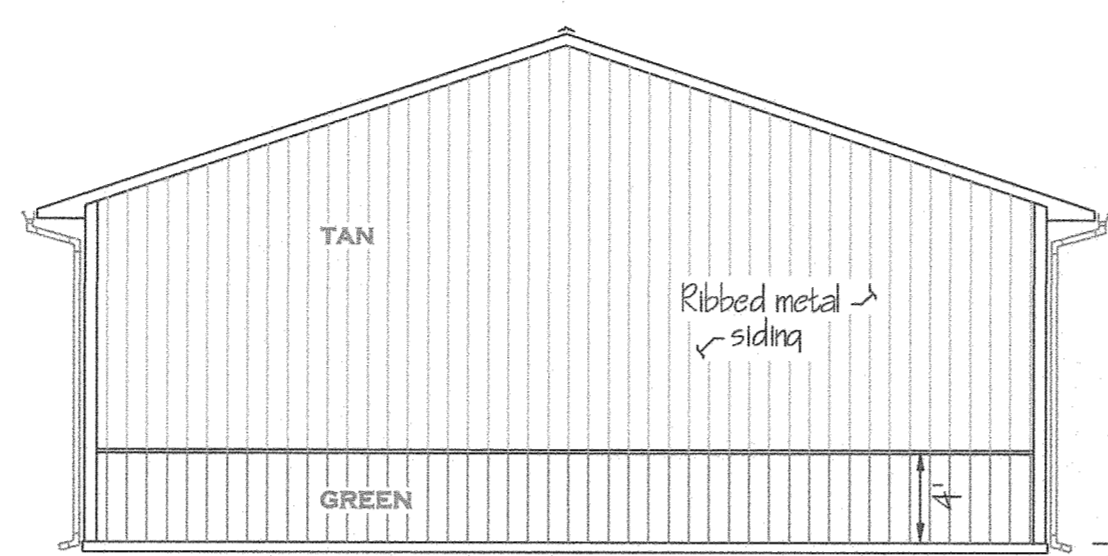
BACK ELEVATION
SCALE: 1/8" = 1'-0"



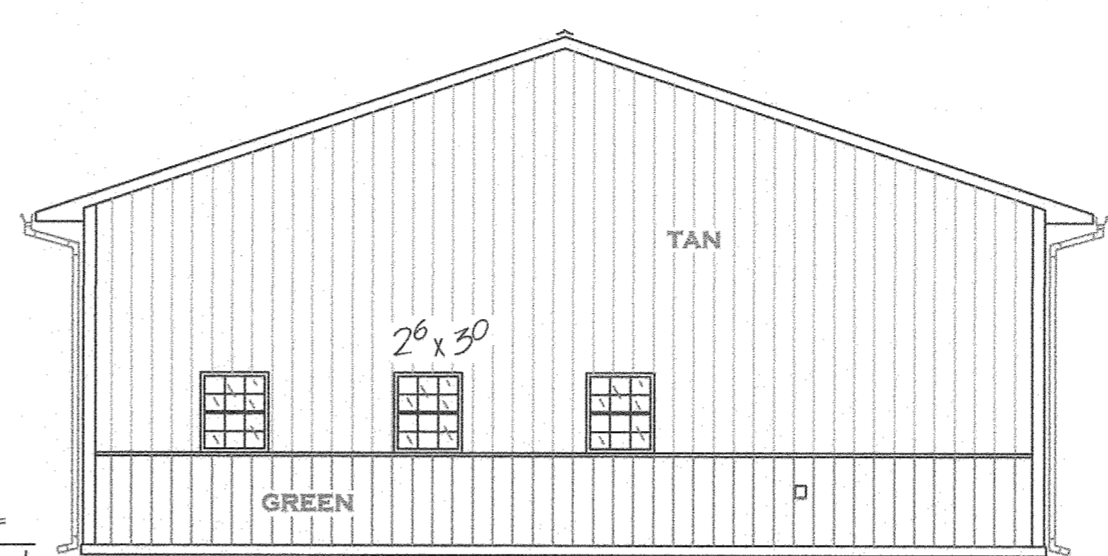
FRONT ELEVATION
SCALE: 1/8" = 1'-0"



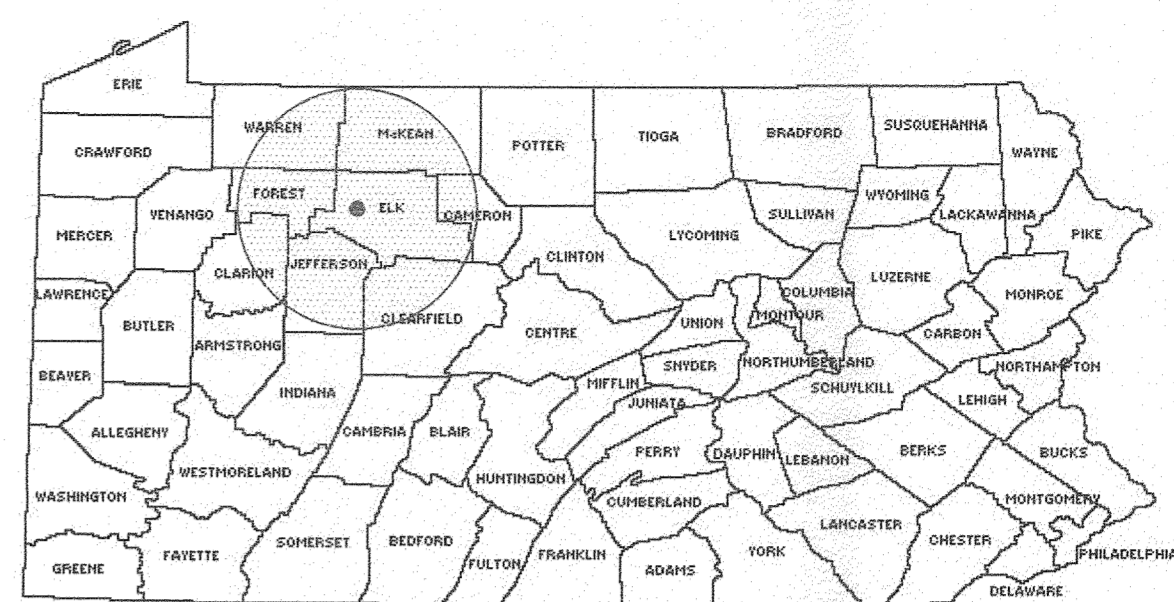
TYPICAL SECTION
SCALE: 1/8" = 1'-0"



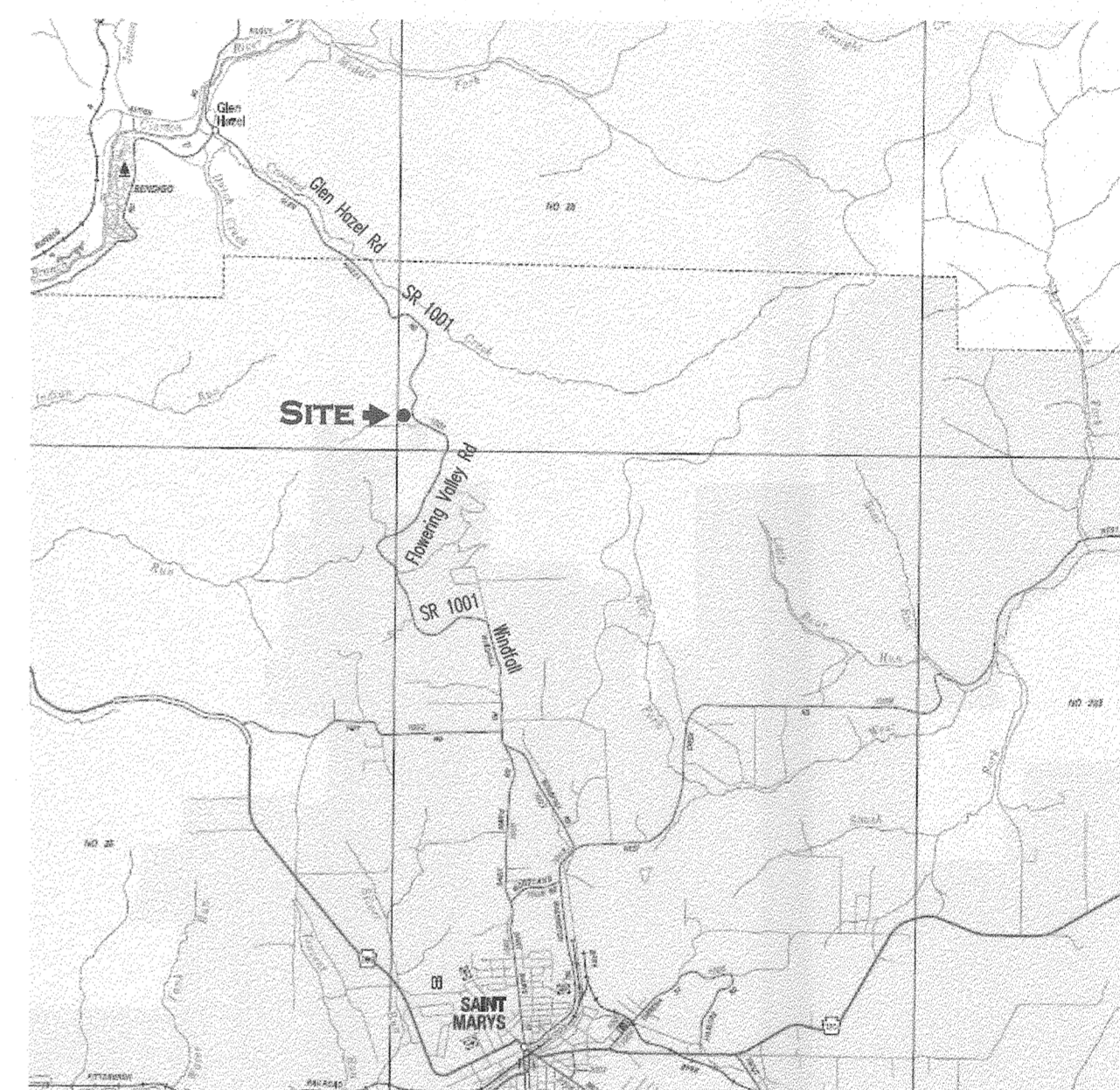
LEFT ELEVATION
SCALE: 1/8" = 1'-0"



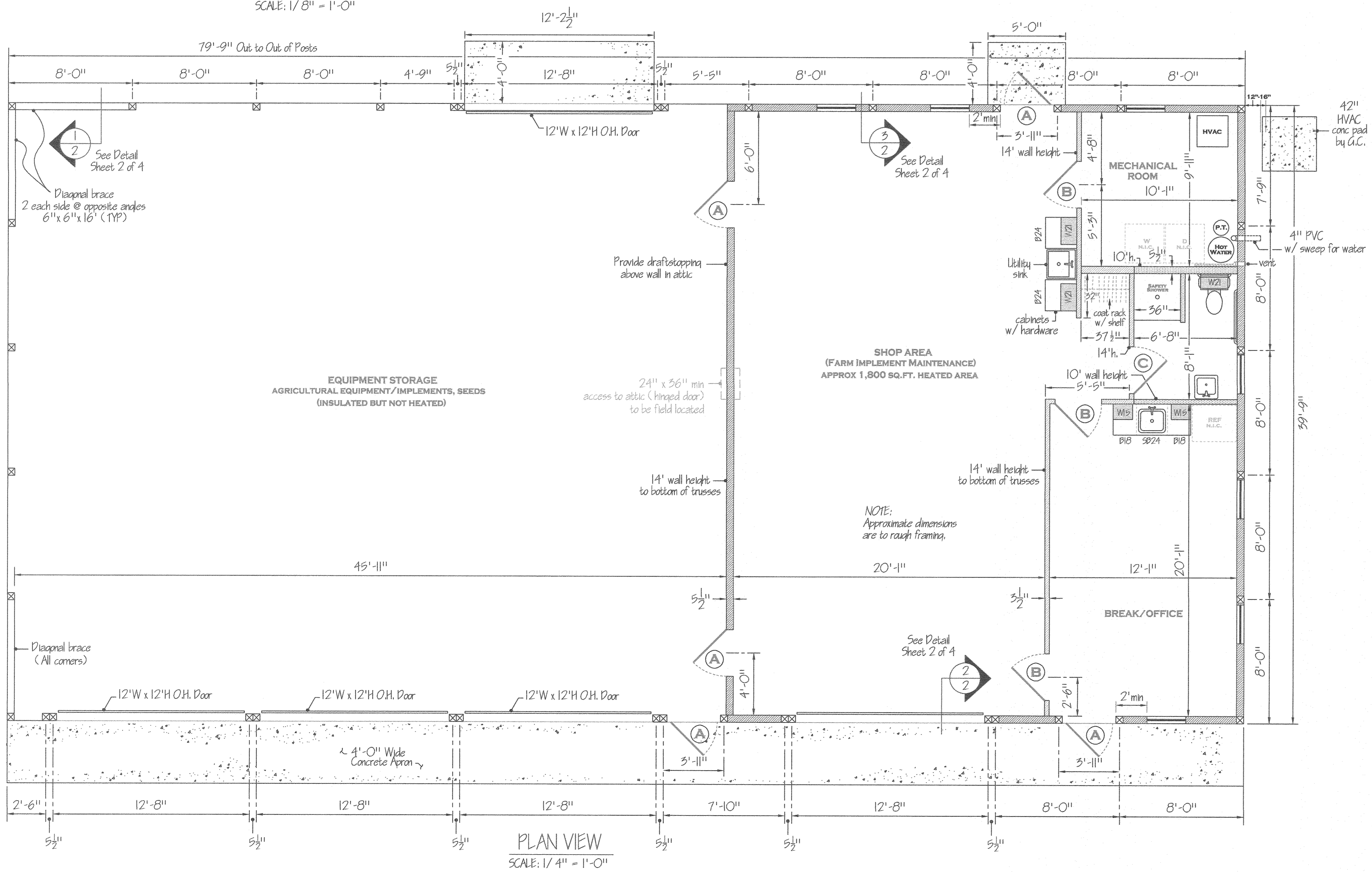
RIGHT ELEVATION
SCALE: 1/8" = 1'-0"



LOCATION MAP
NOT TO SCALE



VICINITY MAP
NOT TO SCALE



PLAN VIEW
SCALE: 1/4" = 1'-0"

Construction of new storage building on State Game Lands #025
Benzinger TWP., Elk County, PA. Must comply to UCC Code.

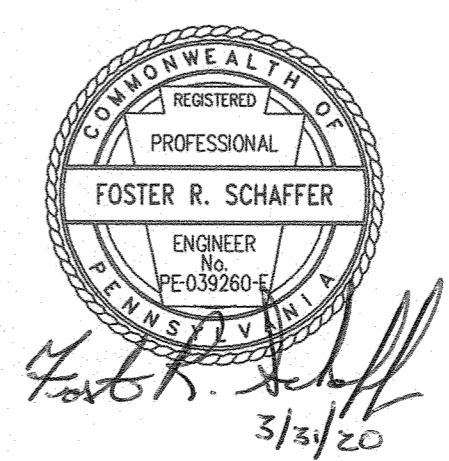
Code Chapter 5
Chapter Heading Use and Occupancy Classification
304.1 B Buildings occupied portion for Office
311.1 5-1 Buildings occupied for storage that are not 5-2

6 Type of Construction
Table 601 Type VB

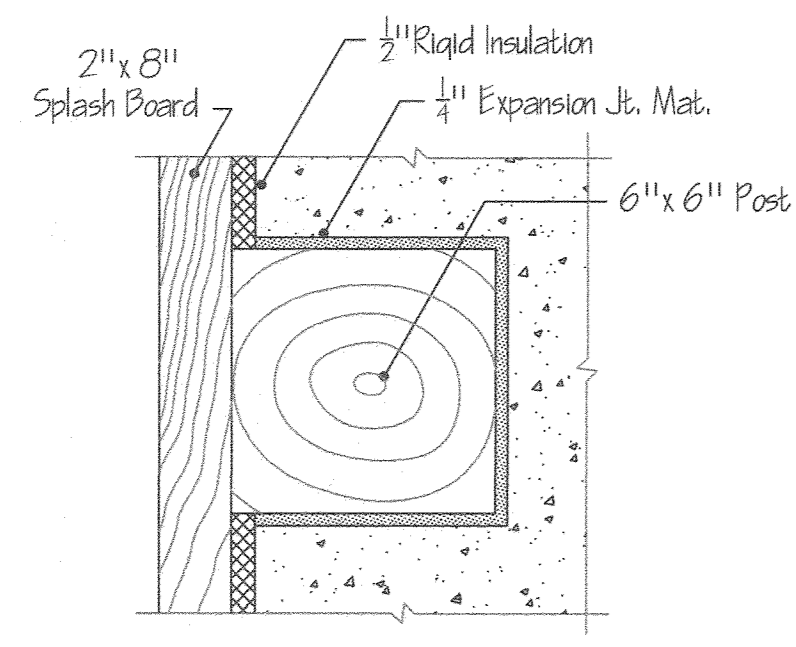
10 Means of Egress
Table 1004.1 Max floor area per Occupant
Group Occ. Factor Sq.Ft. Occupancy
Storage 300 gross 3,200

11 Accessibility
Not required (Exemption from L&I AAB)

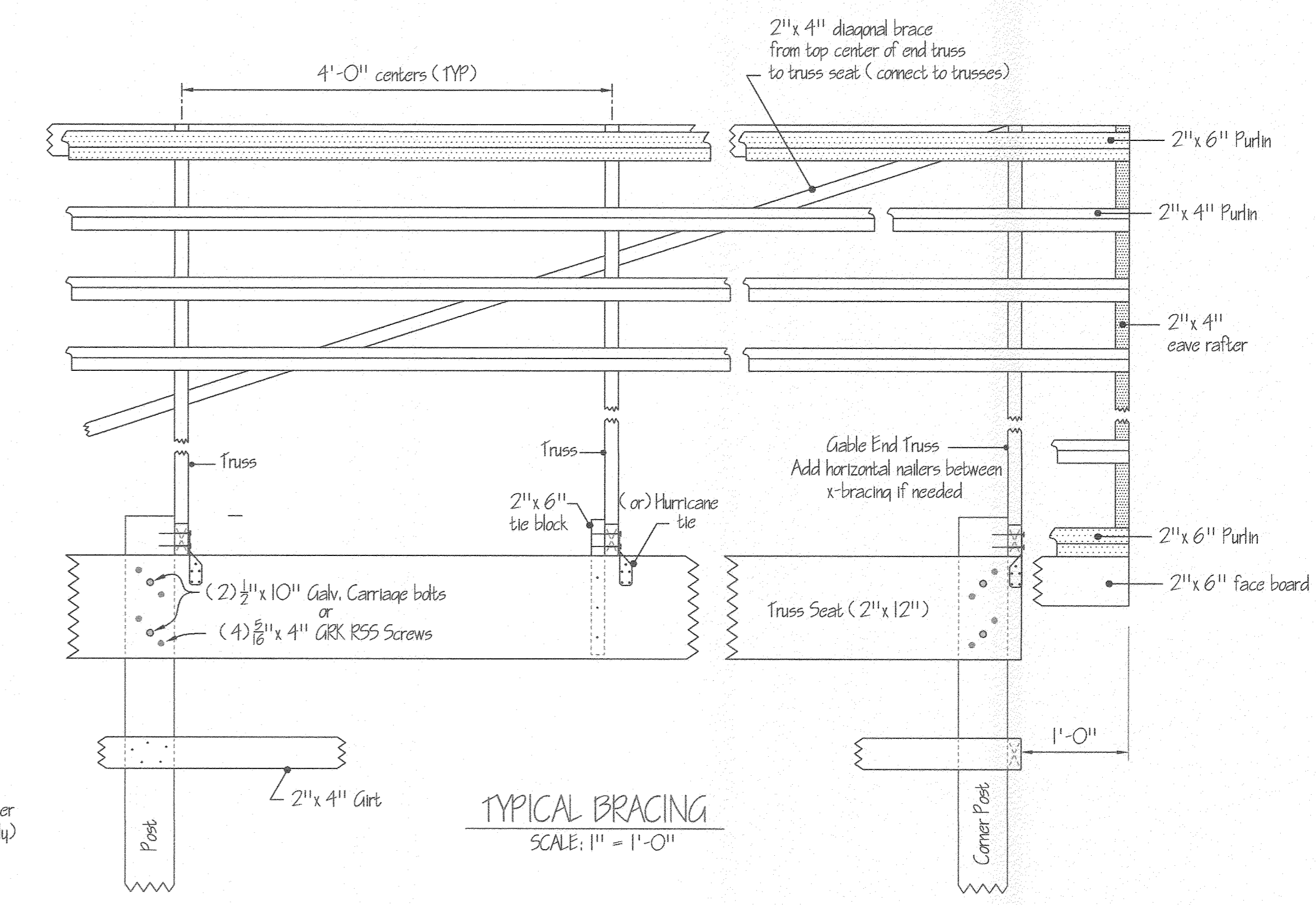
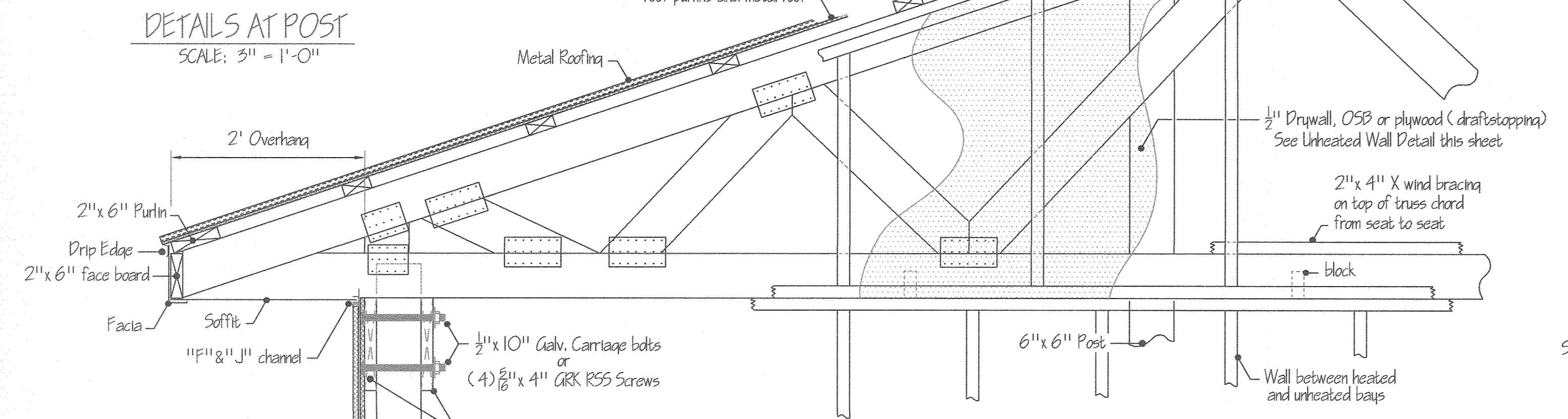
NOTE:
SEE SHEET 5 FOR SITE PLAN



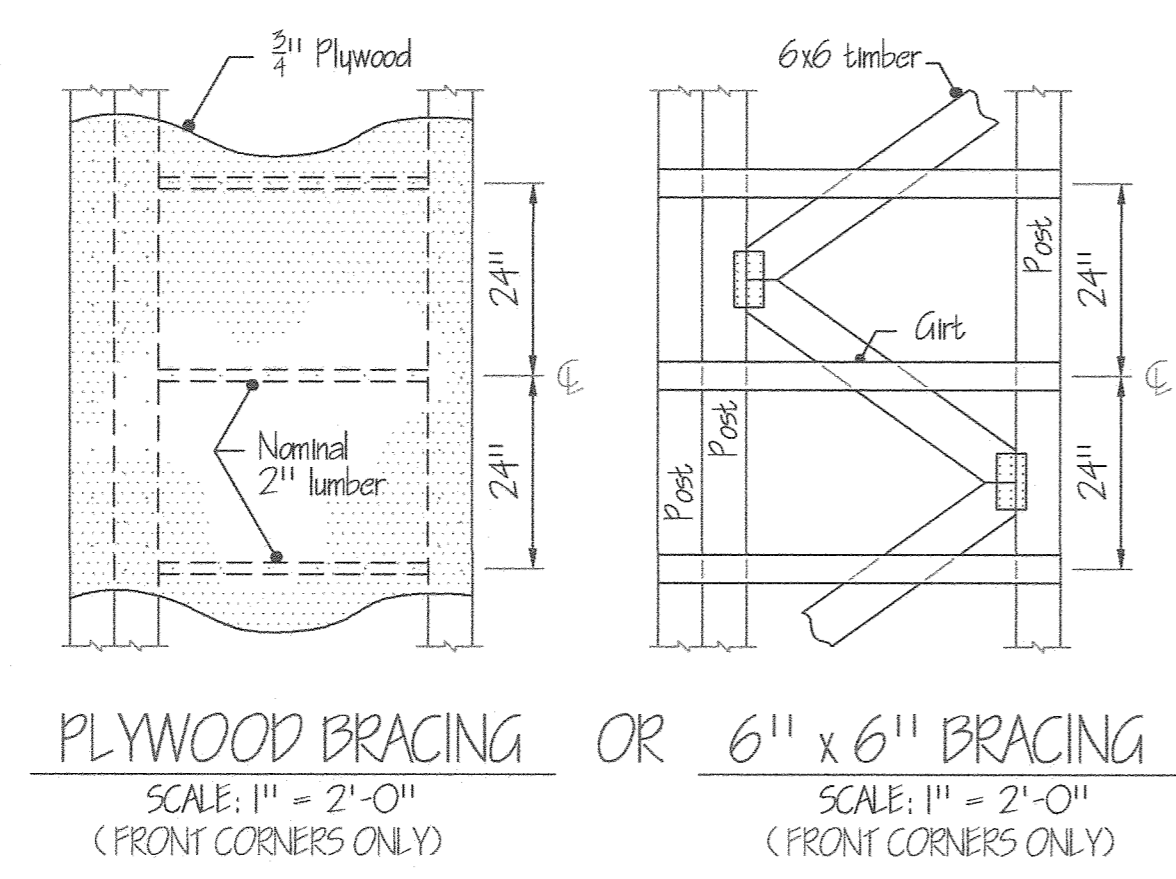
PENNSYLVANIA GAME COMMISSION		
STATE GAME LANDS #025	BENZINGER TWP.	ELK CO.
LOCATION MAP, PLAN VIEW AND ELEVATIONS		
REVISIONS		
PROJECT NO.	PGC-025-19-2	
DRAWING NO.	025-FLOOR PLAN	
DRAWN BY:	JBM	
DATE:	02-21-20	
SHEET NO.	1 OF 5	



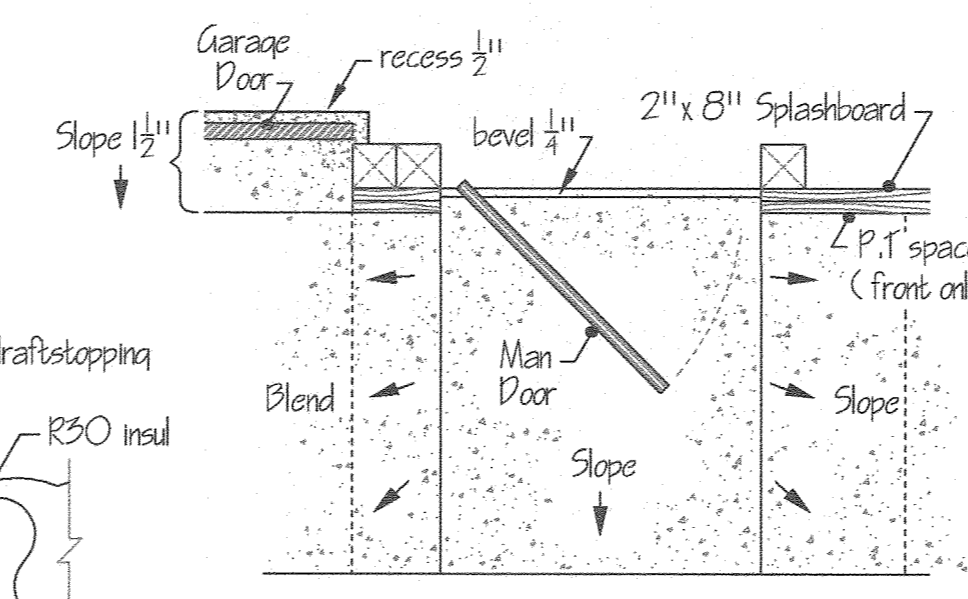
NOTE: Truss designed w/8" energy heel.
Design information is deferred.



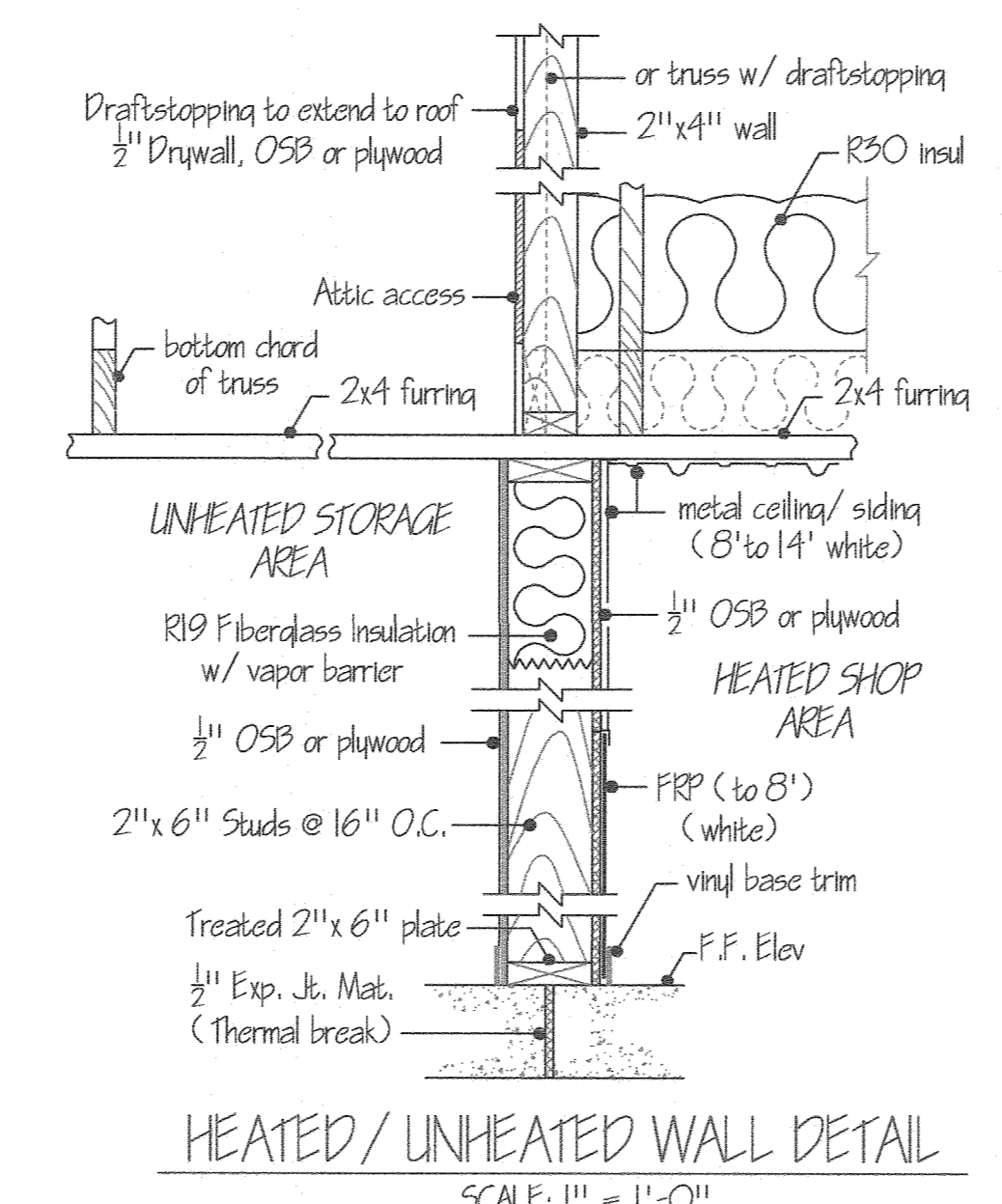
TYPICAL BRACING
SCALE: 1" = 1'-0"



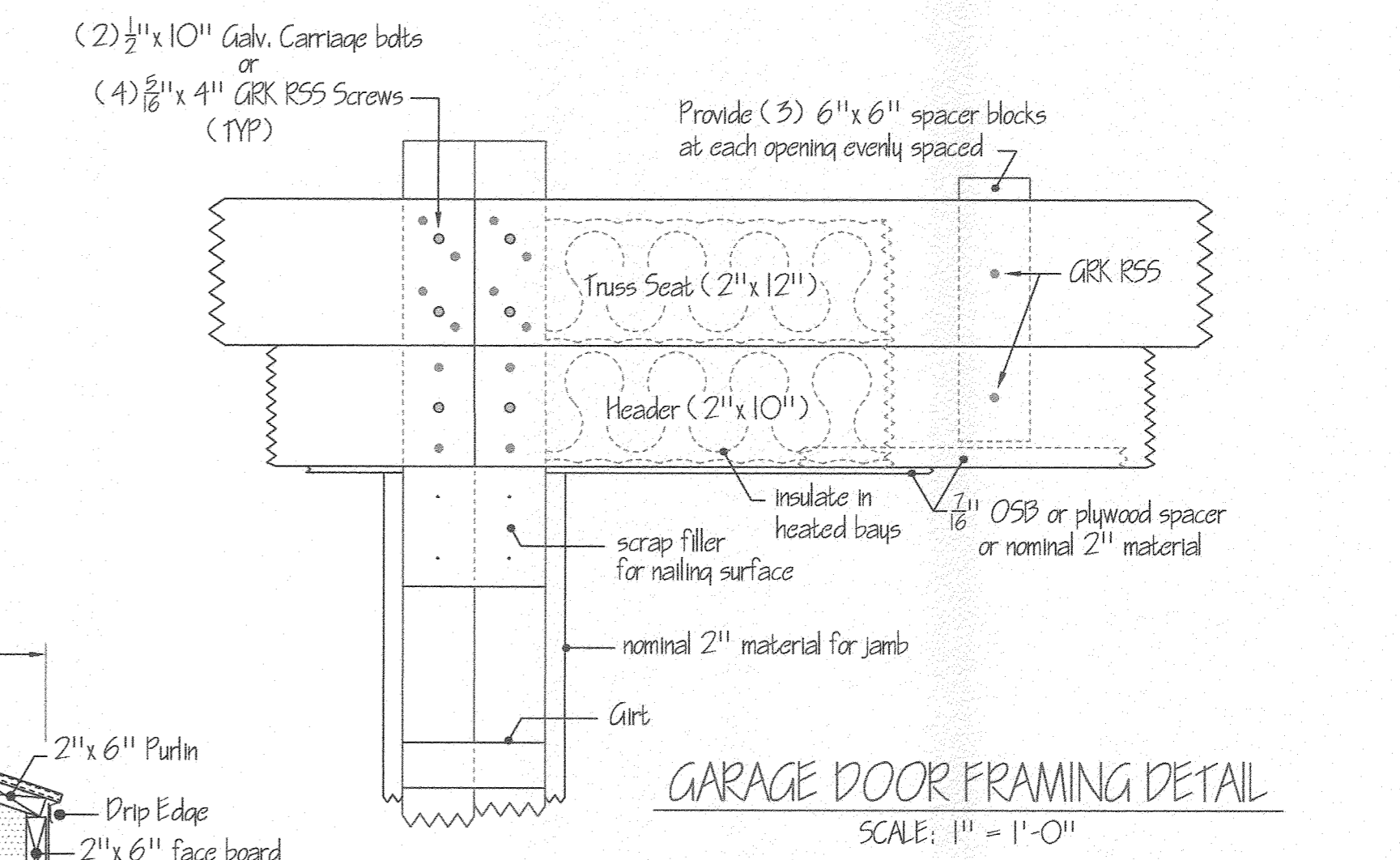
PLYWOOD BRACING OR 6" x 6" BRACING
SCALE: 1" = 2'-0" (FRONT CORNERS ONLY)



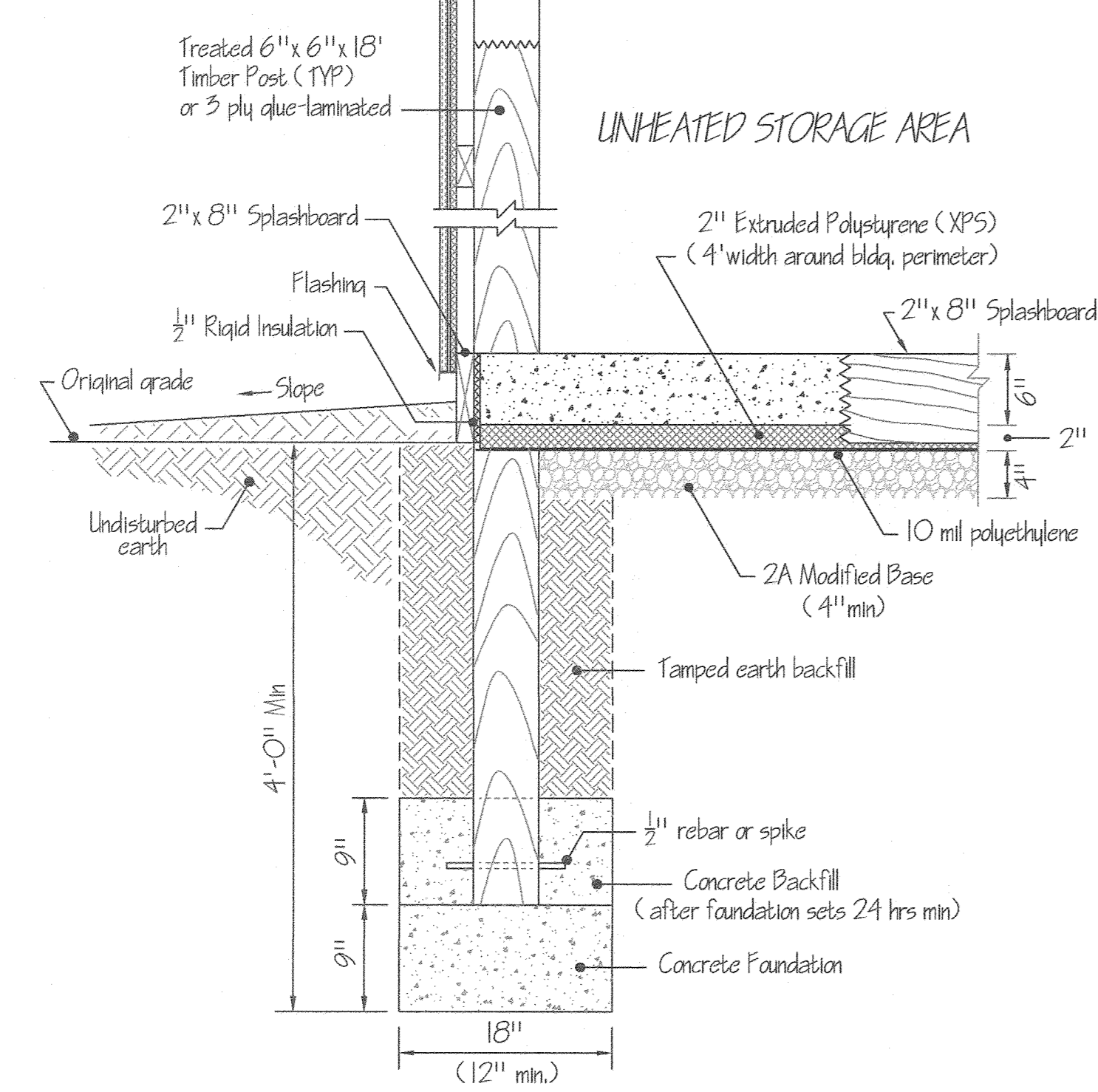
CONCRETE DETAIL @ DOOR
SCALE: 1/2" = 1'-0"



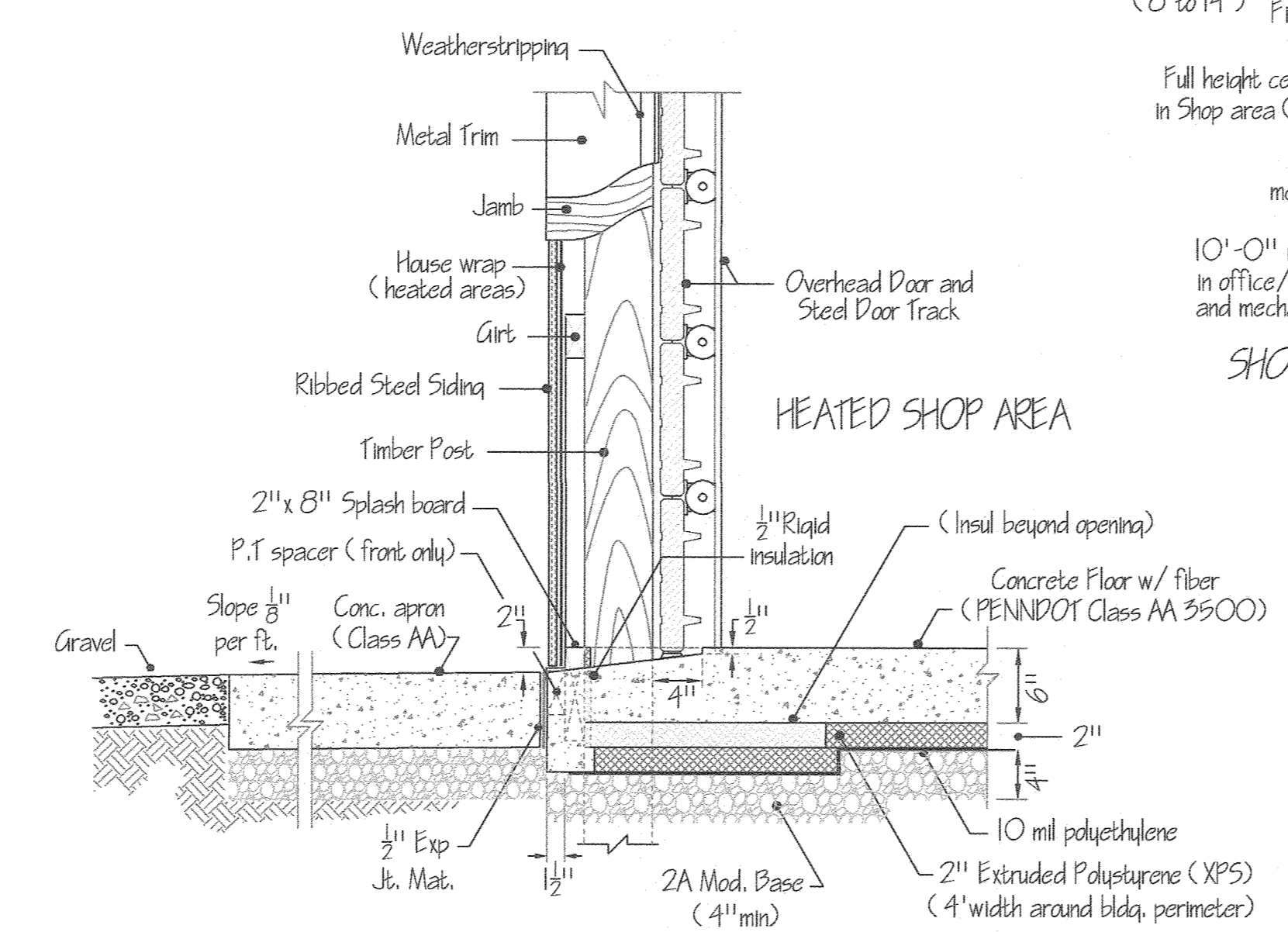
HEATED / UNHEATED WALL DETAIL
SCALE: 1" = 1'-0"



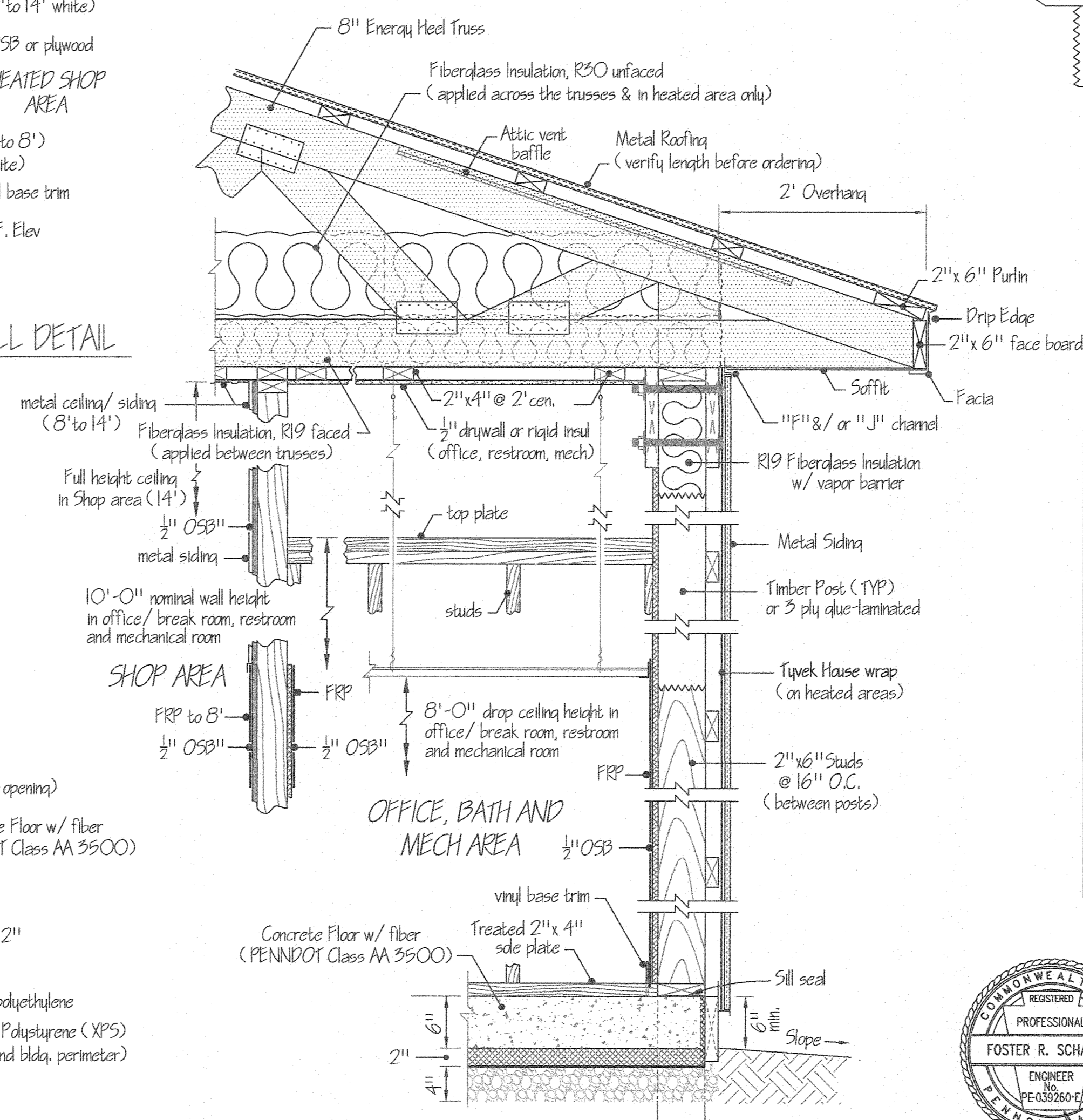
GARAGE DOOR FRAMING DETAIL
SCALE: 1" = 1'-0"



CROSS SECTION DETAIL 1
SCALE: 1" = 1'-0"



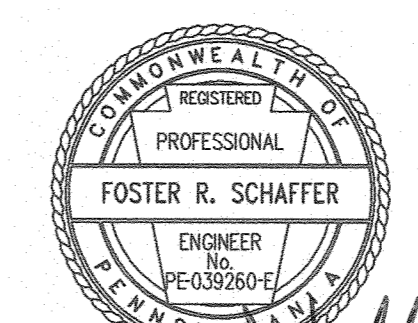
O.H. DOOR SILL AND JAMB DETAIL 2
SCALE: 1" = 1'-0"



CROSS SECTION DETAIL 3
SCALE: 1" = 1'-0"

Mark	Type	W	H	T	Hand	Qty	Remarks
A	3	3'-0"	7'-0"	1-3/4"	LHR	5	Insulated Core w/ glass, Panic Bolt, Closure
B	1	3'-0"	7'-0"	1-3/4"	RH	1	Non-insulated w/ glass & passage set
B	1	3'-0"	7'-0"	1-3/4"	RHR	1	Non-insulated w/ glass & passage set
B	4	3'-0"	7'-0"	1-3/4"	LHR	1	Non-insulated w/ glass, vent & passage set
C	2	3'-0"	7'-0"	1-3/4"	RH	1	Non-insulated Core w/ lockset

DOOR SCHEDULE



Foster R. Schaffer
3/31/20

PENNsylvania GAME COMMISSION		
STATE GAME LANDS #025	BENZINGER TWP.	ELK CO.
FRAMING DETAILS		
REVISIONS	PROJECT NO. PGC-025-19-2	DRAWING NO. 025-DETAILS-2
	DRAWN BY: JBM	DATE: 02-21-20
	SHEET NO.	2 OF 5

LOAD CENTER
VOLTAGE: 240/120V
SERVICE FEEDER SIZE: 2-#4/0 & 1-#2 AL

Circuit No.	Circuit Breakers Poles	Amps	200 AMP Main Service Breaker	Wiring No./Size
1,3	2	50	220 Volt Outlet (Welder)	3 - #6
2,4	2	30	220 Volt Outlet (Air compressor)	3 - #10
5,7	2	20	Wall Pump	3 - #12
6,8	2	30	Water Heater	3 - #10
9,11	2	40	HVAC Outside Unit	3 - #8
10,12	2	60	HVAC Inside Air Handler Heat Strips	
13,15	2	30	HVAC Inside Air Handler Unit	
14	2	20	Shop Receptacles w/ GFCI protection	3 - #12
16	2	20	Shop Receptacles w/ GFCI protection	3 - #12
17	1	20	Work Shop General Lighting	3 - #12
18	1	20	Exit Lighting	3 - #12
19	1	20	Utility GFI Receptacles	3 - #12
20	1	20	Office, Restroom, Mech Lighting & Washer recept	3 - #12
21	1	20	Implement Storage Lighting	3 - #12
22	1	20	Implement Storage Receptacles	3 - #12
23	1	20	Implement Storage Receptacles	3 - #12
24	1	20	Office Receptacles	3 - #12
25	1	20	Office Receptacles	3 - #12
26	1	20	Break, Restroom GFI Receptacles	3 - #12
27	1	20	Mechanical Room GFI Receptacle/ Microwave	3 - #12
28	1	20	Shop Exterior GFI Receptacle	3 - #12
29	1	20	Septic Tank alarm	3 - #12
30,32	2	30	Mechanical room Dryer receptacle	3 - #10
31	1	20	Garage door openers	3 - #12
33	1	20	Spare Breaker	
34	1	20	Spare Breaker	
35	1	20	Spare Breaker	
36-42			Spare Spaces	

ELECTRICAL WIRING SYMBOLS

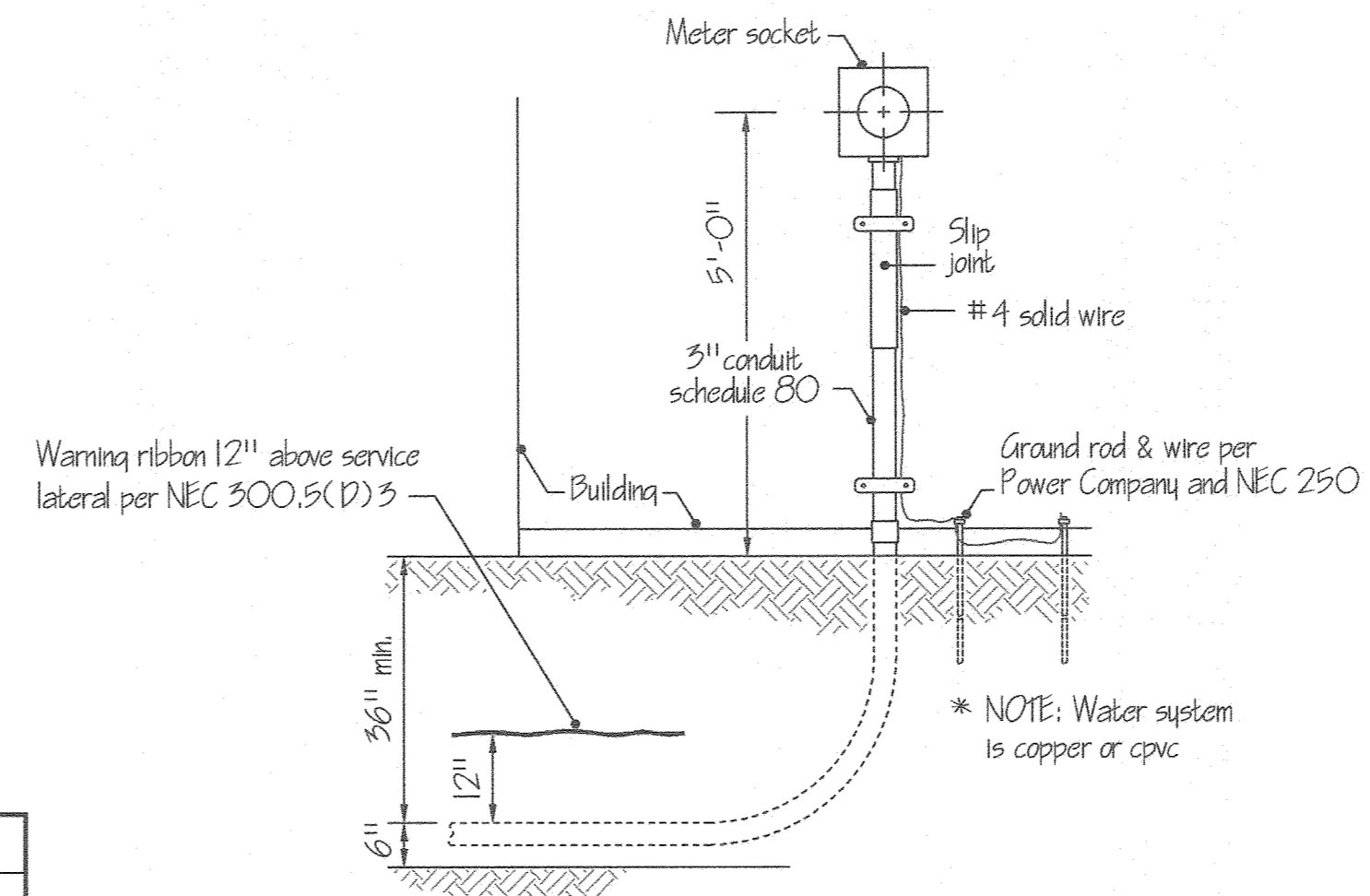
- GFI Receptacle
- ⊕ Duplex Outlet, Split Circuit
- ⊖ Duplex Outlet
- ⊙ 30 Amp, 220 Volt Outlet
- ⊙ 30 Amp, 220 Volt Outlet
- ⊙ 30 Amp, 220 Volt Outlet (Dryer)
- Home Run / Circuit #
- ⊙ Water Heater
- ⊙ Telecommunications Outlet
- ⊙ Junction Box
- ⊙ Photo Cell
- ⊙ Exit lighting w/ batteries
- ⊙ Switch
- ⊙ Switch, 3 Way
- ⊙ Switch, 4 Way
- ⊙ Pressure Switch
- ⊙ Water Pump

RECEPTACLE & SWITCH MOUNTING HEIGHTS

Microwave	66"
Washer	36"
Dryer	36"
Office Receptacles and Telephone	18"
All switches and other receptacles	48"

MARK	QTY	LIGHTING SCHEDULE	MODEL
A	0	16.75" x 4" Surface Mount, 4 Lamp Elec Ballast, 15	LITHONIA SB452MVOL10EPI015
B	4	2" x 4" LED Panel	SIMKAR LDP2430L40U1
C	11	15.25" x 22" 4 LAMP LED HIGH BAY	LITHONIA LPH1500CLM SP080 MP OZIO 40K 80 CRI
D	1	2" Integrated LED wall mount vanity light (25 watt)	LITHONIA FMV1SL 3000K
E	3	Security motion, Wall Mount/ Outside Unit	HEATH ZENITH SL-5630-BZ
F	3	Exit & Emergency combo light w/ batteries & remote head	LITHONIA ECRLEDPO W6 w/ ELA LED WP M12

Quotes for lighting fixtures can be provided by Gene Grassell @ 717-986-9558



SERVICE DETAIL
SCALE: 1/2" = 1'-0"

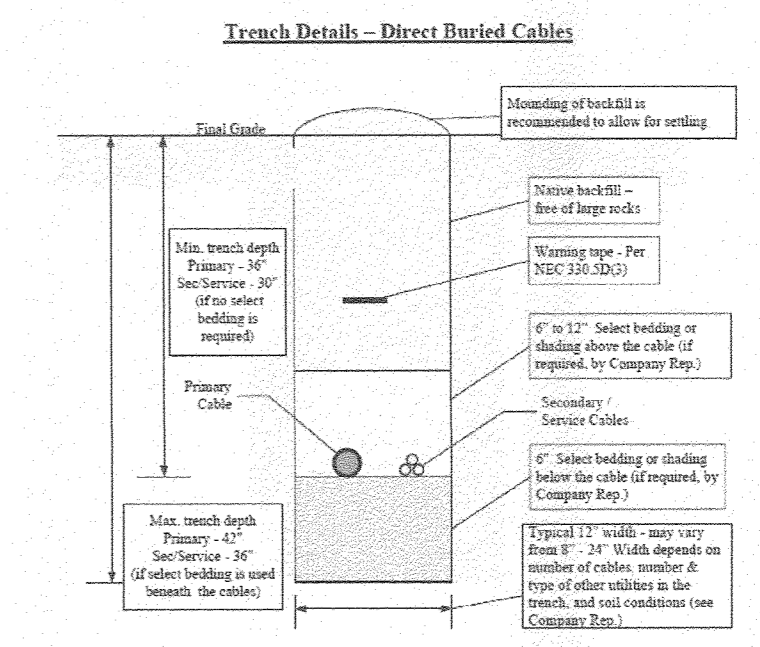


TABLE - MINIMUM COVER REQUIRED PER CODE (INCHES)

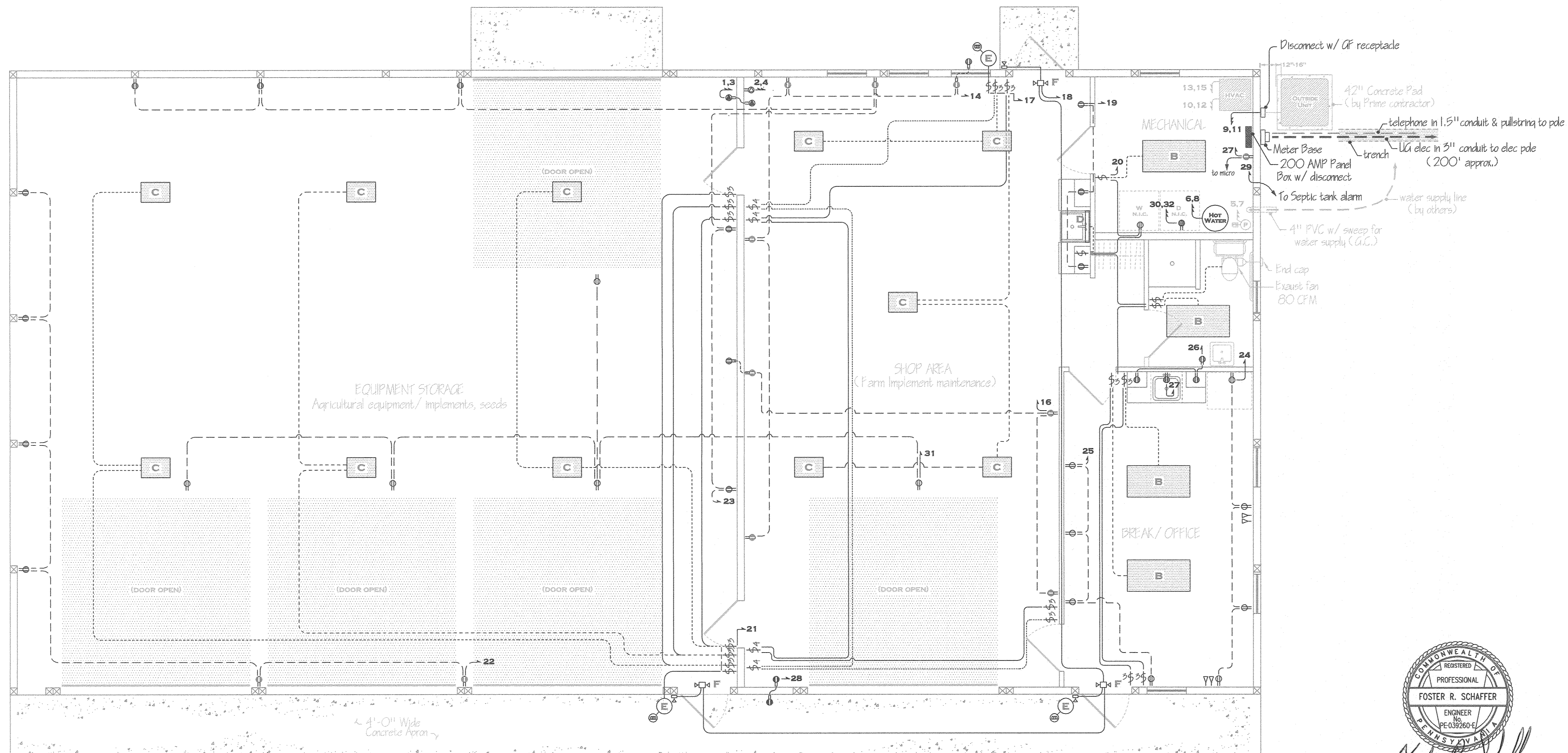
Voltage (0-10)	Street	Right-of-Way	Right-of-Way	Street	Right-of-Way	Street	Right-of-Way
	Direct Burial	Conduit (RMC)	Conduit (RMC)	Direct Burial	Conduit (RMC)	Direct Burial	Conduit (RMC)
0-600 V	24	6	18	24	24		
>600 V-22 kV	30	6	18	24	30		
>22 kV-40 kV	36	6	24	24	30		

Notes: (1) FEGC typically requires an additional 6 inches of cover to allow for variation in final grade.
(2) For cables located beneath roads under Penn DOT jurisdiction, cables must be installed in conduit and have a minimum of 36 inches of cover.

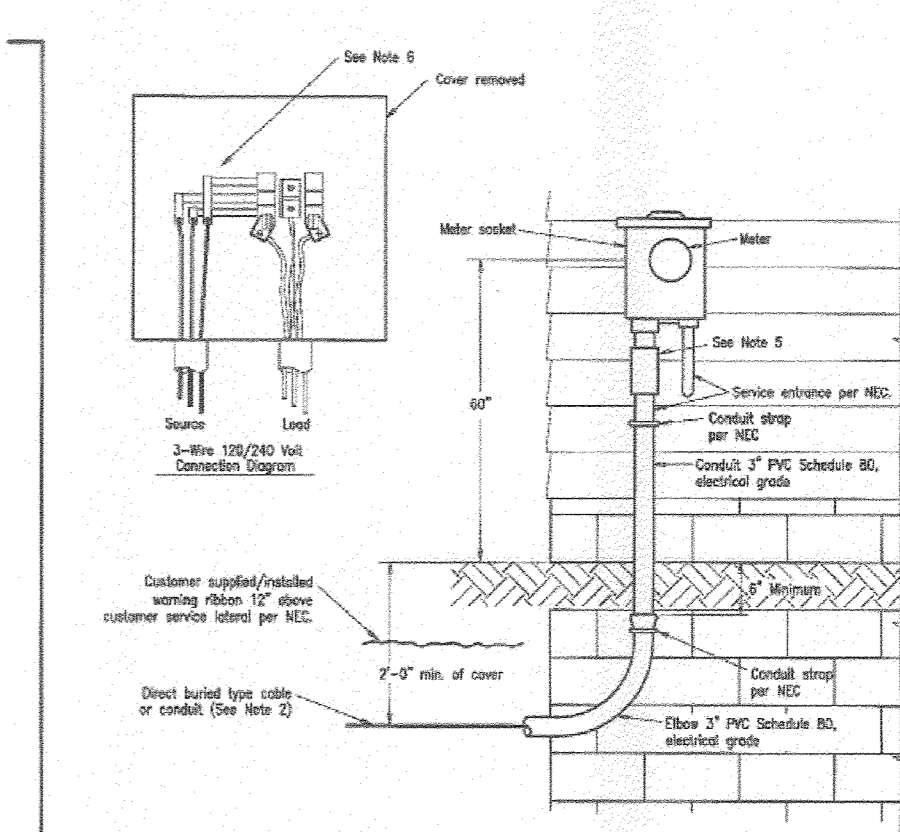
TRENCH DETAILS FOR DIRECT BURIED CABLES

FirstEnergy	Rev
Service Guide	Rev
EXHIBIT 23	Date
	1/1/00

* Match receptacle to welder



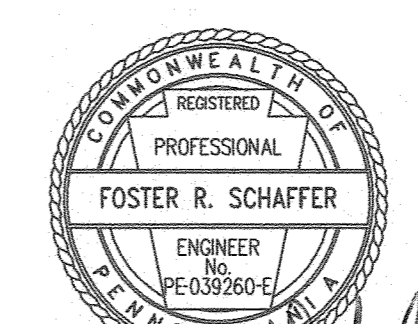
PLAN VIEW
SCALE: 1/4" = 1'-0"



NOTES:
1. For customer/Company responsibilities, see Exhibit 1.
2. For trenching and conduit details, see Exhibit 24.
3. See Section 810 for underground service details.
4. Meter socket may be connected to external ground rods, if required by the local inspection authorities.
5. The customer shall provide a well tamped and firm trench (see Exhibit 24). The customer shall provide ground movement protection per NEC 300.5(j) to prevent damage due to settlement or frost heaves. The Company recommends that the customer use a slip-joint conduit product. Additionally, sufficient stock or a stock box should be provided by the customer to allow for cable movement. For a 3-inch dia. conduit installation, the Company recommends that the customer install a slip joint with an attached stock box.
6. Side-mounted meter socket only.

TYPICAL SINGLE-PHASE UNDERGROUND SERVICE LATERAL INSTALLATION 400 AMP OR LESS

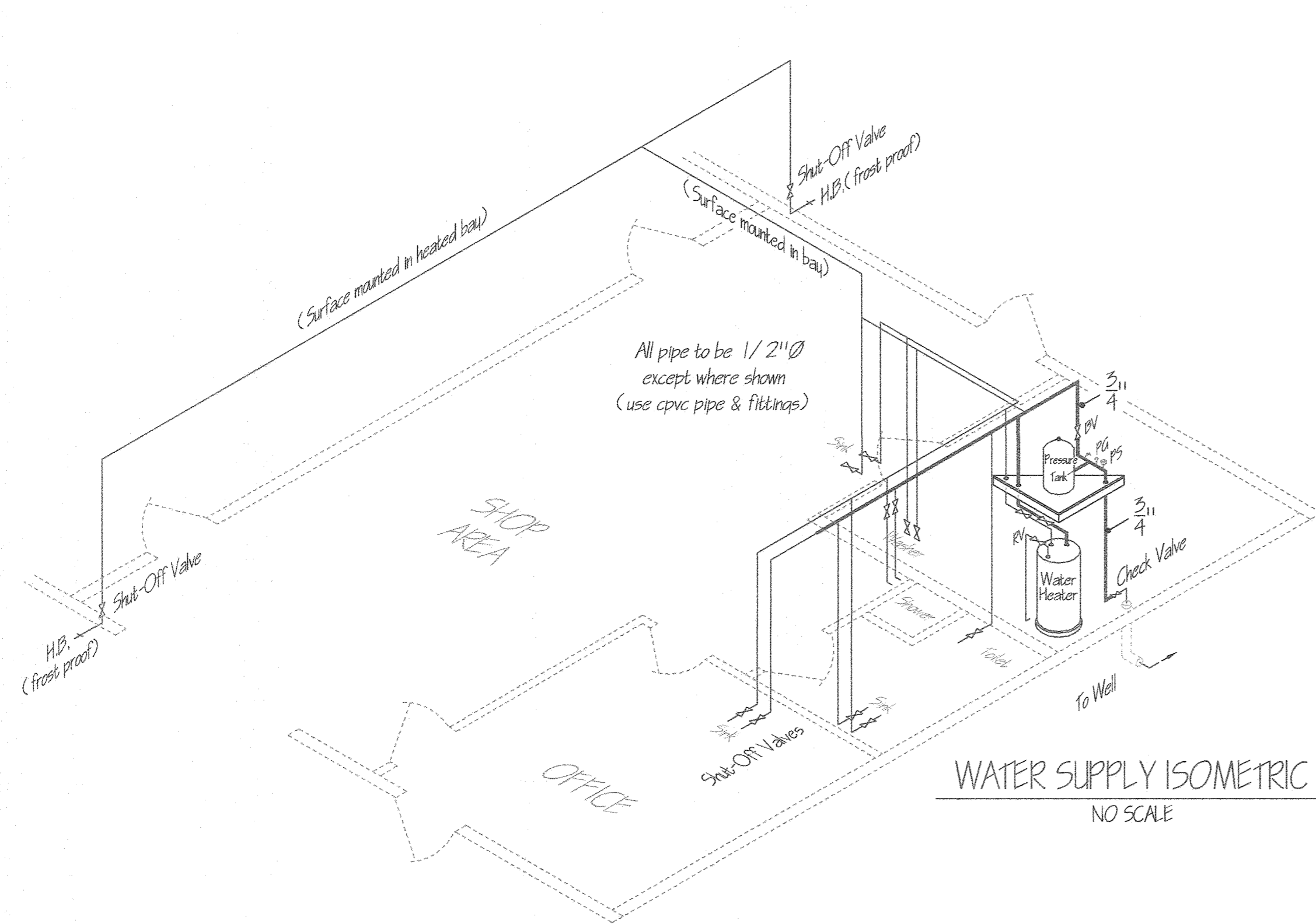
FirstEnergy	Rev
Service Guide	Rev
EXHIBIT 8	Date
PA	1/1/00



Foster R. Schaffer
3/31/20

PENNSYLVANIA GAME COMMISSION

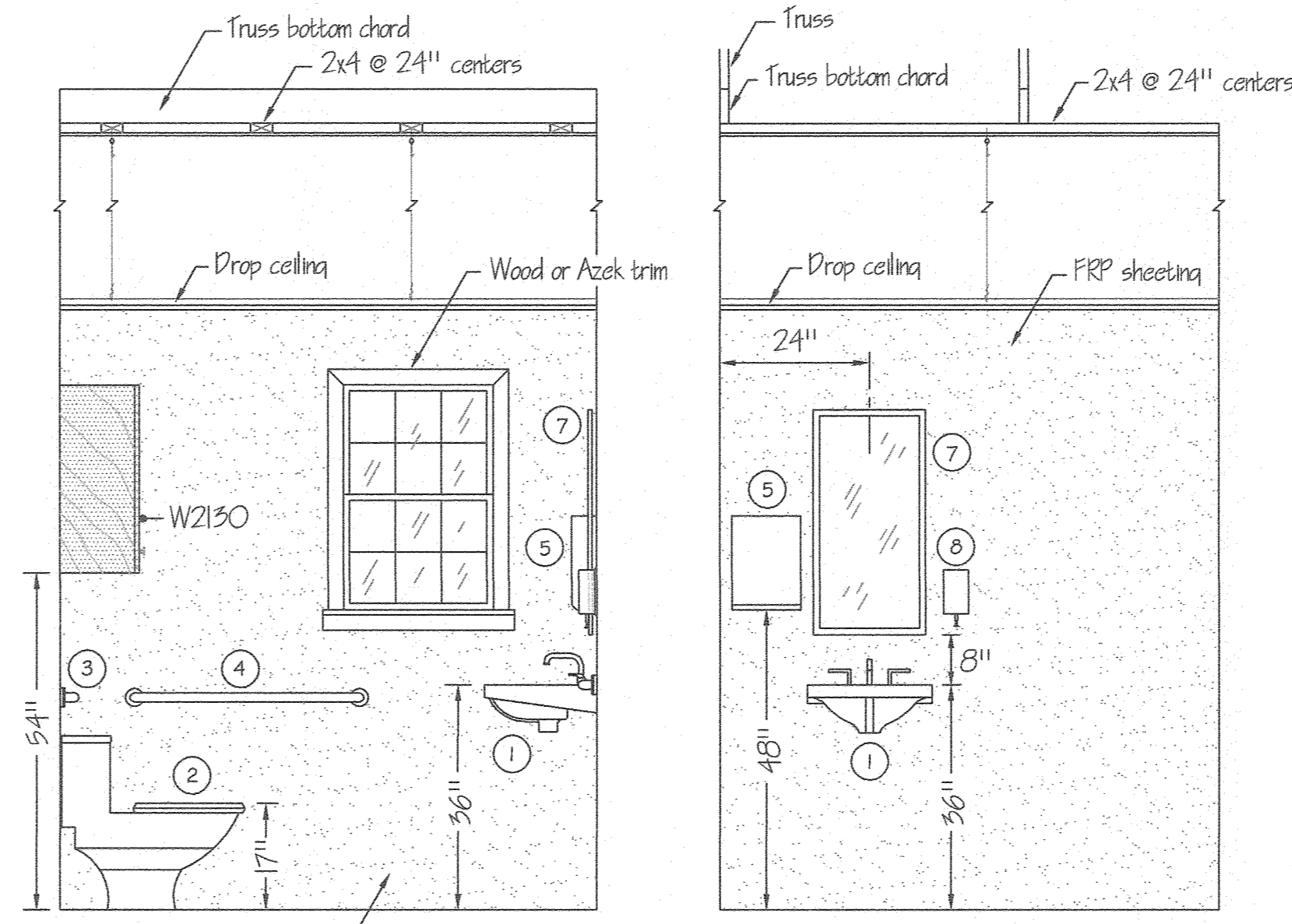
STATE GAME LANDS #025	BENZINGER TWP.	ELK CO.
ELECTRIC DETAILS		
REVISIONS	PROJECT NO.	PGC-025-19-2
△	DRAWING NO.	025-ELECTRIC-3
△	DRAWN BY:	JBM
△	DATE:	02-22-20
△	SHEET NO.	3 OF 5



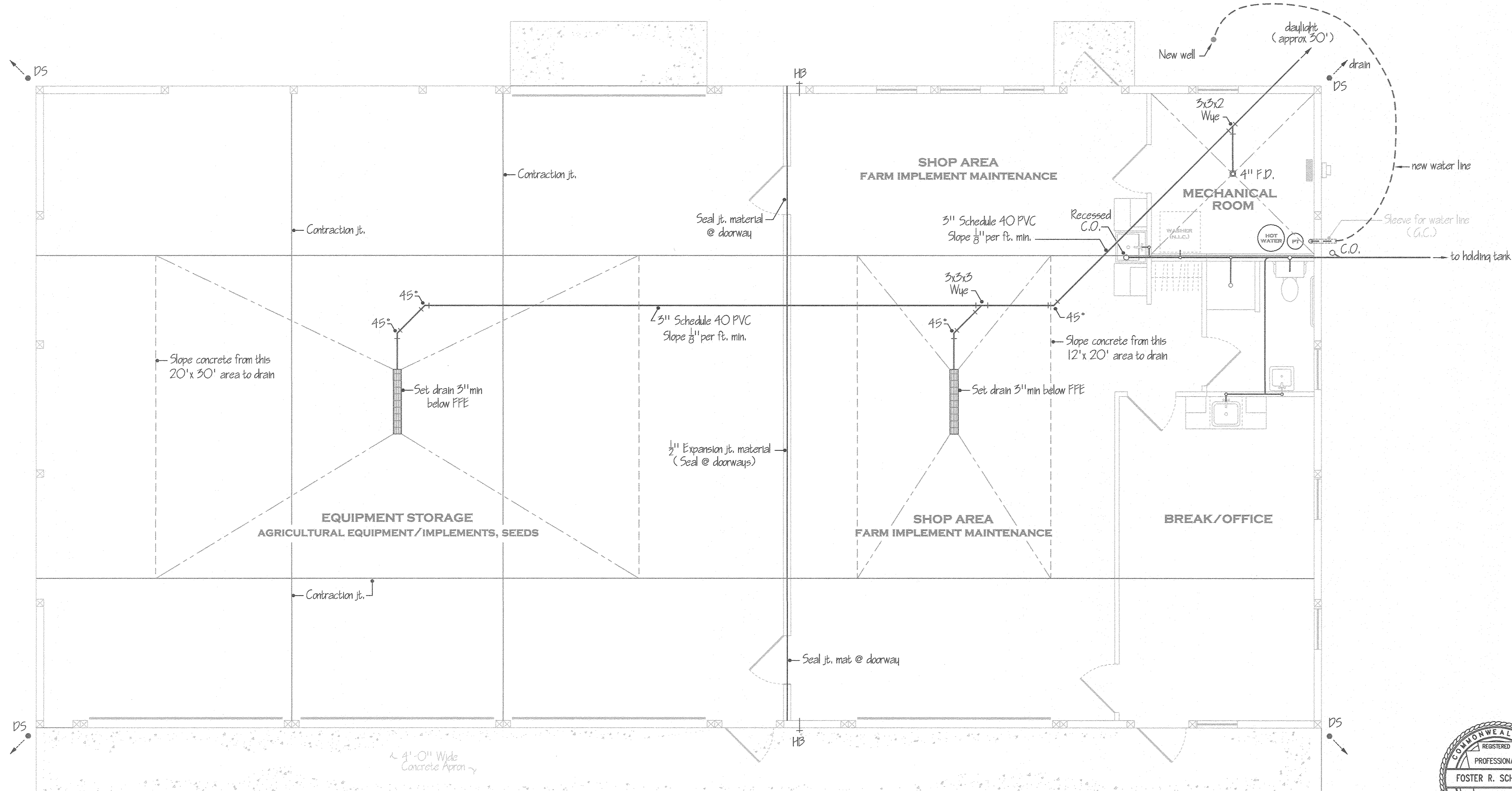
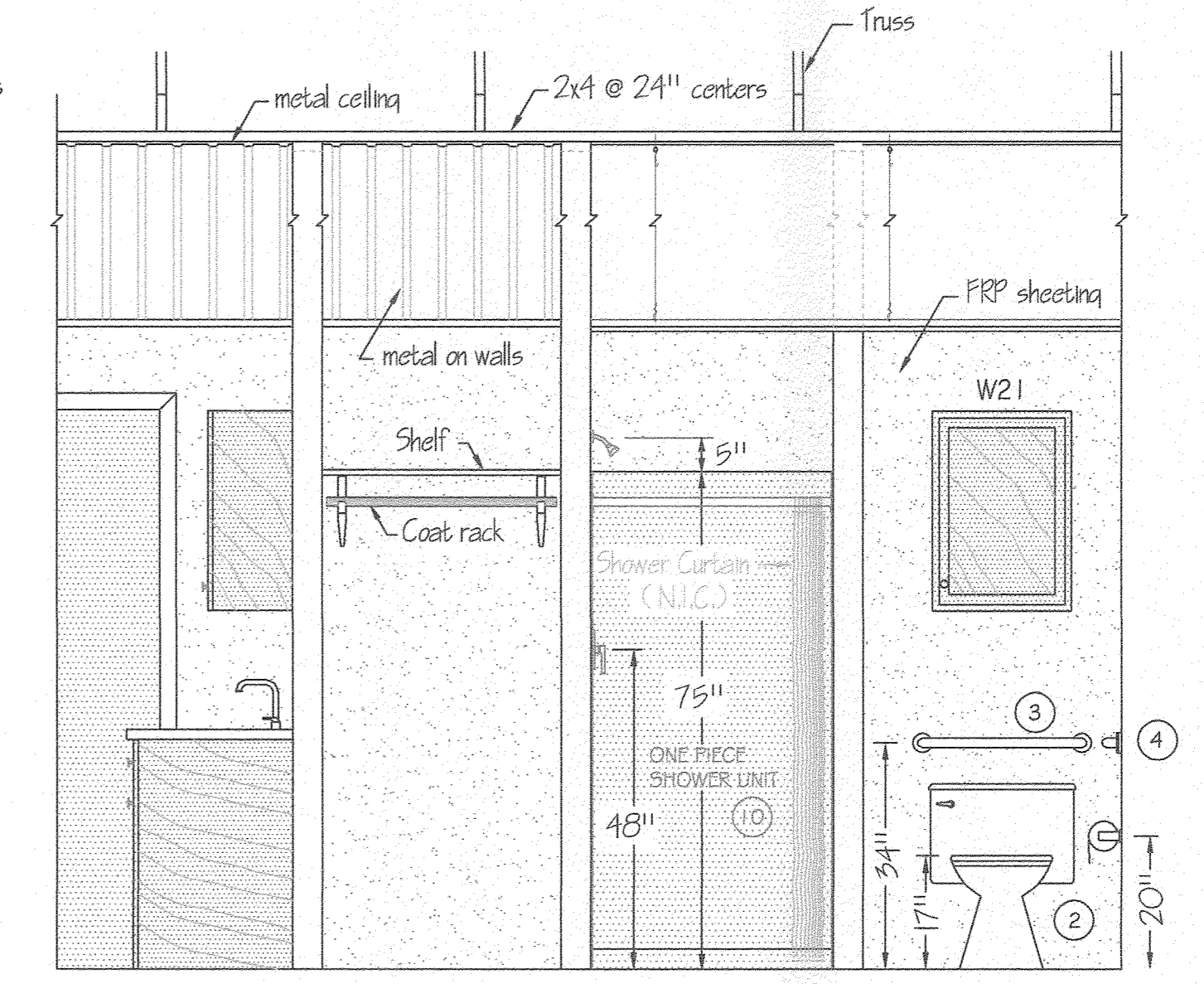
WATER SUPPLY ISOMETRIC
NO SCALE

BRADLEY CORP. (FOR REF. ONLY)
FIXTURE/ACCESSORY LEGEND

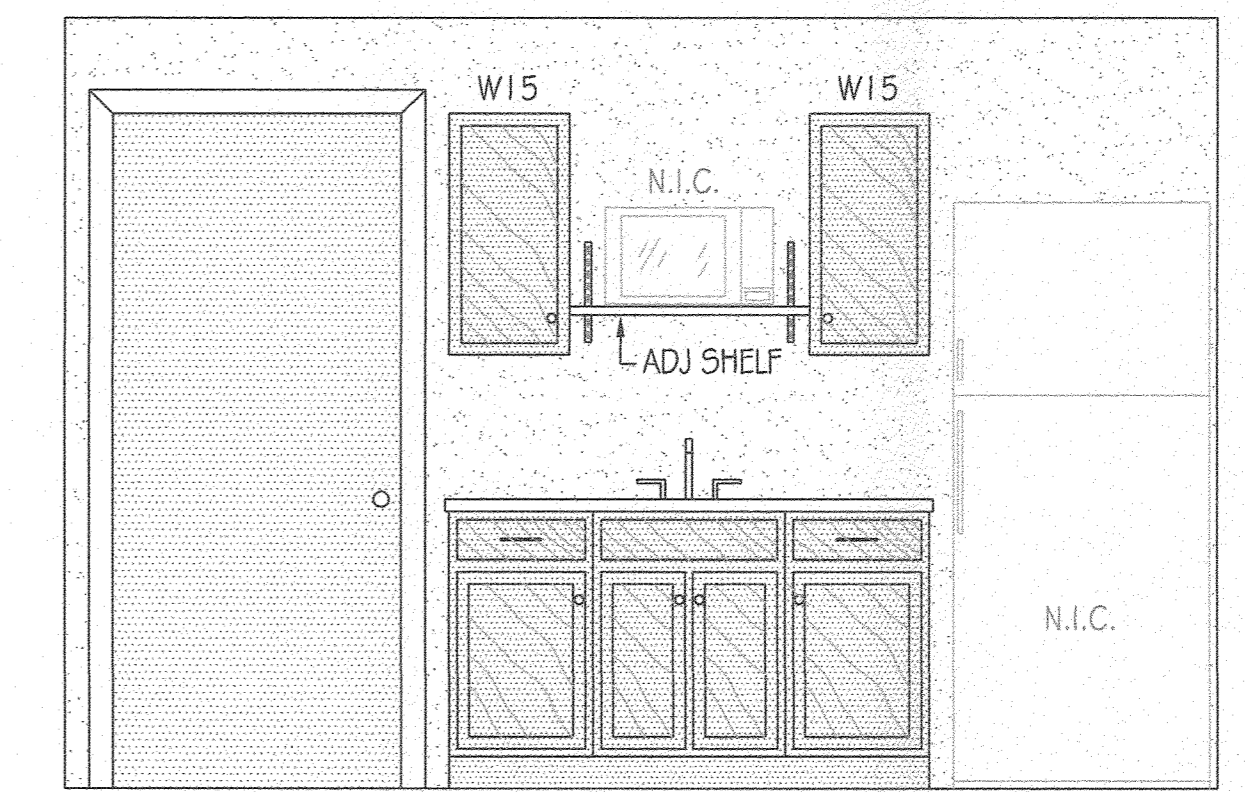
- ① SINK (W/FAUCET)
 - ② FLOOR MOUNTED WATER CLOSET
 - ③ GRAB BAR (24" LONG)
 - ④ GRAB BAR (36" LONG)
 - ⑤ TOWEL DISPENSER
 - ⑥ TOILET TISSUE HOLDER
 - ⑦ 18" x 36" MIRROR
 - ⑧ SOAP DISPENSER
 - ⑨ LIGHT FIXTURE
 - ⑩ ONE PIECE SHOWER UNIT
 - ⑪ UTILITY SINK (W/FAUCET)
- MODEL 812
 - MODEL 812
 - MODEL 250-15
 - MODEL 508
 - MODEL 780-1836
 - MODEL 655
 - 2' INTEGRATED LED GELCOATED FIBERGLASS
 - SEE SPECS



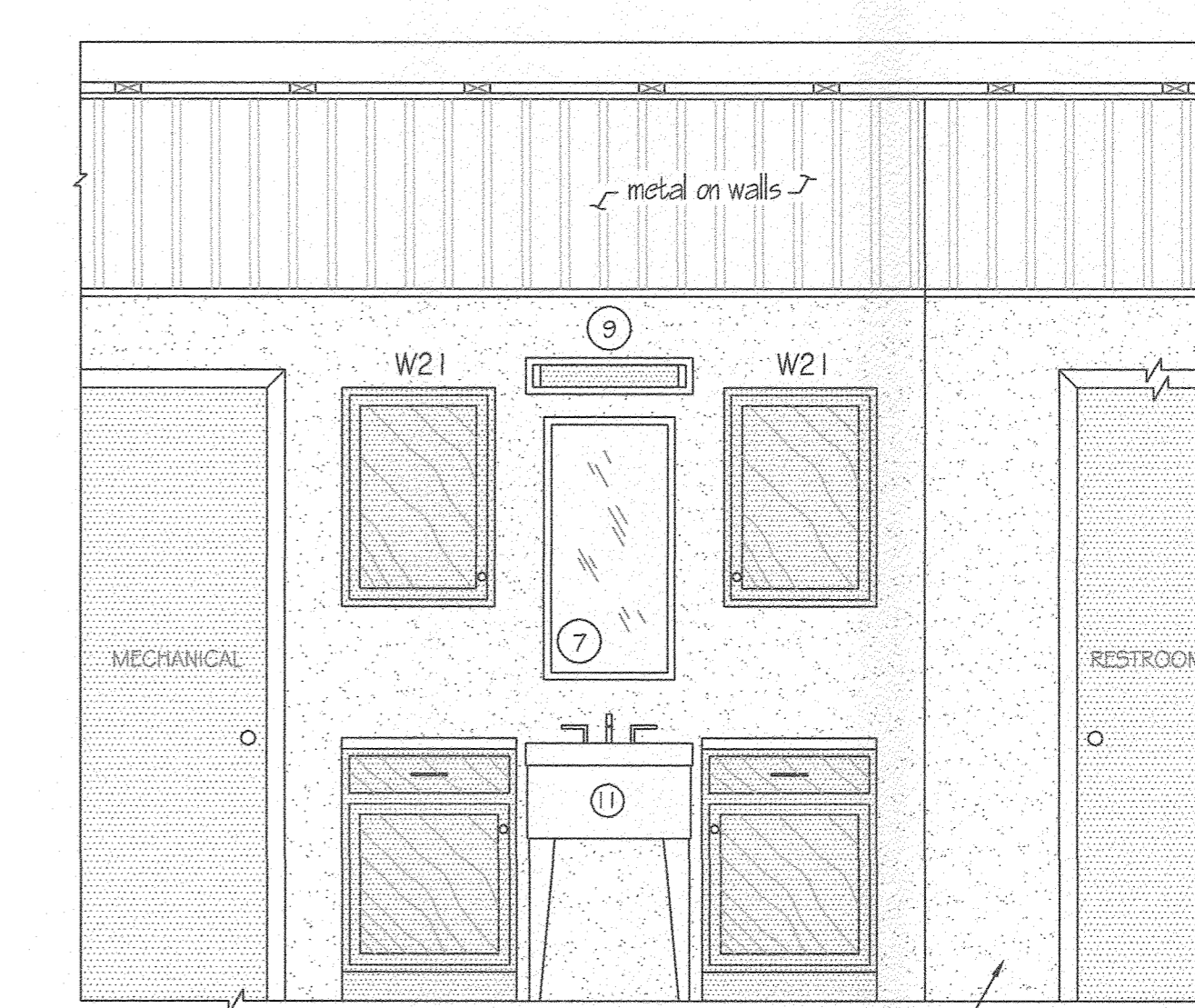
RESTROOM ELEVATIONS
SCALE: 1/2" = 1'-0"



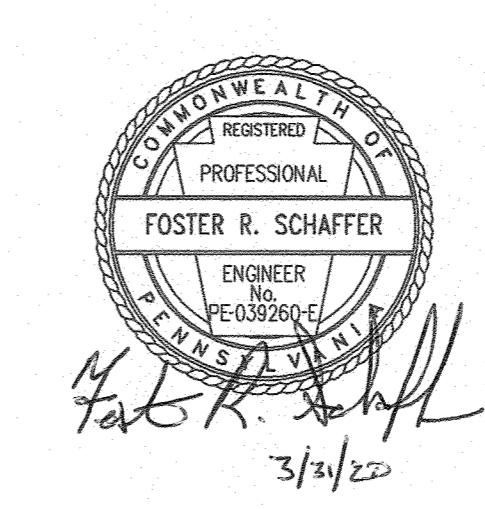
PLUMBING PLAN
SCALE: 1/4" = 1'-0"



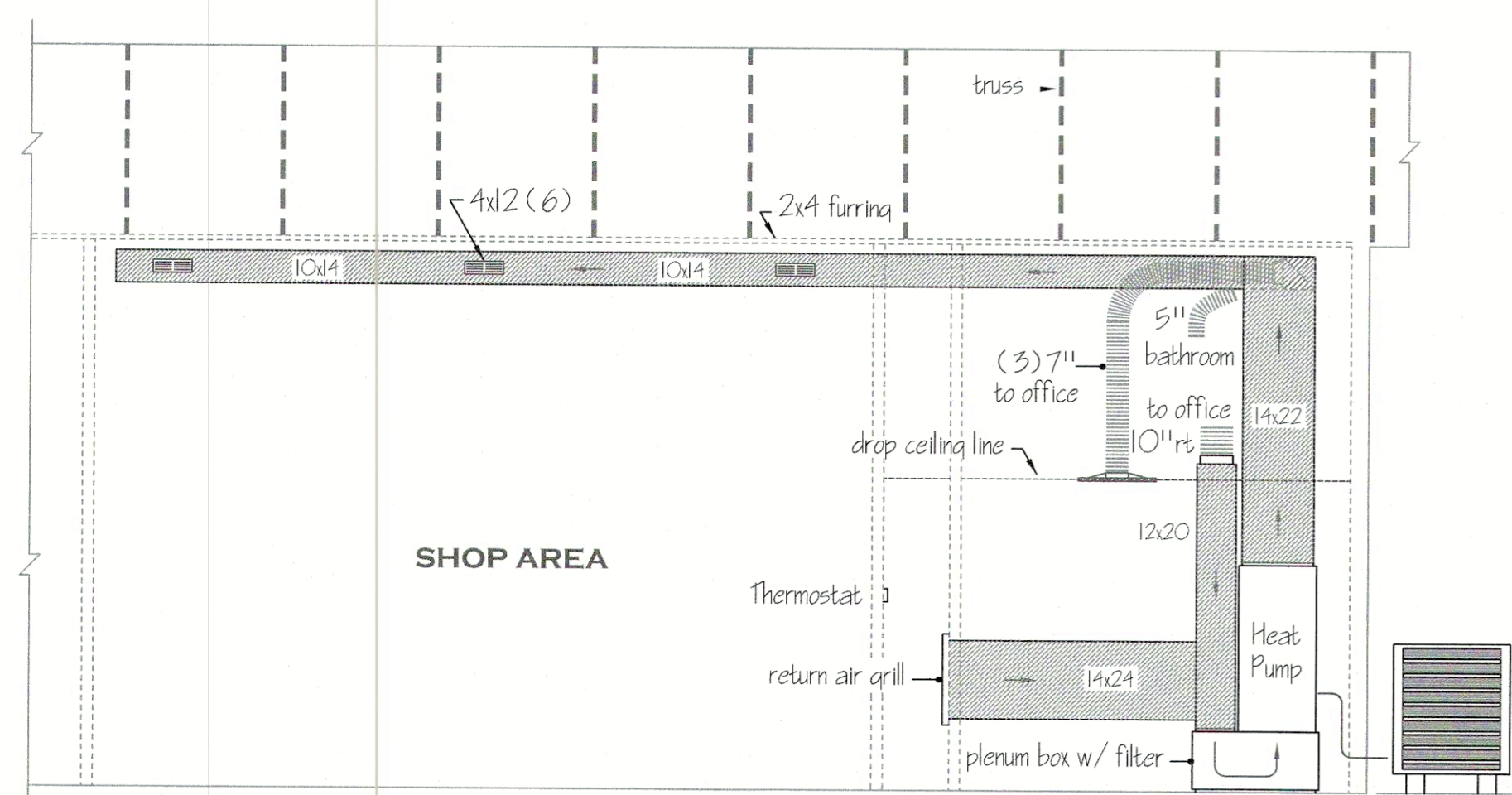
BREAK/OFFICE
SCALE: 1/2" = 1'-0"



UTILITY AREA
SCALE: 1/2" = 1'-0"



PENNSYLVANIA GAME COMMISSION		
STATE GAME LANDS #025	BENZINGER TWP.	ELK CO.
PLUMBING AND BATHROOM DETAILS		
REVISIONS	PROJECT NO.	PCC-025-19-2
▲	DRAWING NO.	025-PLUMBING-4
▲	DRAWN BY:	JBM
▲	DATE:	02-22-20
▲	SHEET NO.	4 OF 5



HVAC PLAN
SCALE: 1/4" = 1'-0"

NOTE:
THIS IS TO BE A BOSCH HEAT PUMP. LAYOUT OF DUCTS, DUCT SIZES AND DIFFUSERS ARE MEANT TO BE USED AS A GUIDELINE. ACTUAL RUNS, SIZES AND LOCATIONS TO BE DETERMINED BY MANUFACTURER'S MODEL. THE FOLLOWING STEPS SHOULD BE FOLLOWED IN THE DESIGN AND INSTALLATION OF THE HVAC SYSTEM TO ENSURE EFFICIENCY AND COMFORT.

1. DETERMINE ROOM-BY-ROOM AND AIR-FLOWS USING ACCA MANUAL J CALCULATION PROCEDURES. (OR SUBSTANTIALLY EQUIVALENT)
2. SIZE DUCT SYSTEM ACCORDING TO ACCA MANUAL D CALCULATION PROCEDURES. (OR SUBSTANTIALLY EQUIVALENT)
3. SIZE HVAC EQUIPMENT TO SENSIBLE LOAD USING ACCA MANUAL S CALCULATION PROCEDURES (OR SUBSTANTIALLY EQUIVALENT)
4. INSTALL EQUIPMENT 4 DUCTS ACCORDING TO DESIGN SPECIFICATIONS USING INSTALLATION PROCEDURES FROM SMACNA / MANUFACTURER'S SPECS.
5. INSTALL 90 STATIC AIR PRESSURE DROP ACROSS THE AIR HANDLER IS WITHIN MANUFACTURER AND DESIGN SPECIFICATIONS.
6. PROVIDE BALANCED AIR FLOWS BETWEEN SUPPLY AND RETURN SYSTEMS TO MAINTAIN NEUTRAL PRESSURE.
7. EQUIPMENT AND ASSOCIATED ITEMS MUST BE APPROVED BY PGC HARRISBURG ENGINEERING DIVISION BEFORE START OF INSTALLATION.

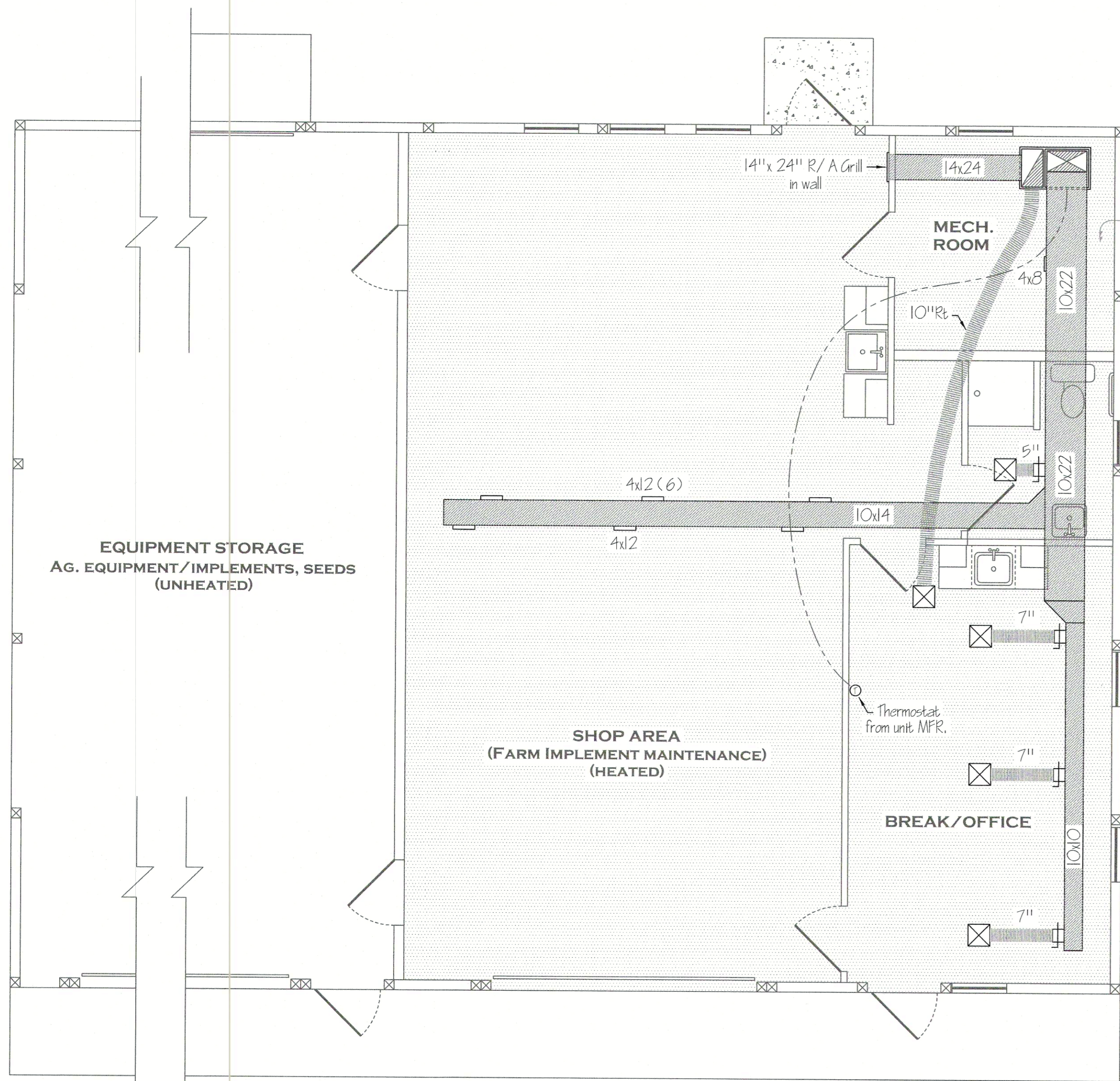
HEAT PUMP TO BE A 5 TON BOSCH BOVA - 060-HD1 - M 18M OUTSIDE CONDENSER W/ BOVA - 048WN1 - M 1.8 AIR HANDLER. UNITS TO ACHIEVE A MINIMUM 1.8 SEER AND 9.5 HSPF (OR SUBSTANTIALLY EQUIVALENT).



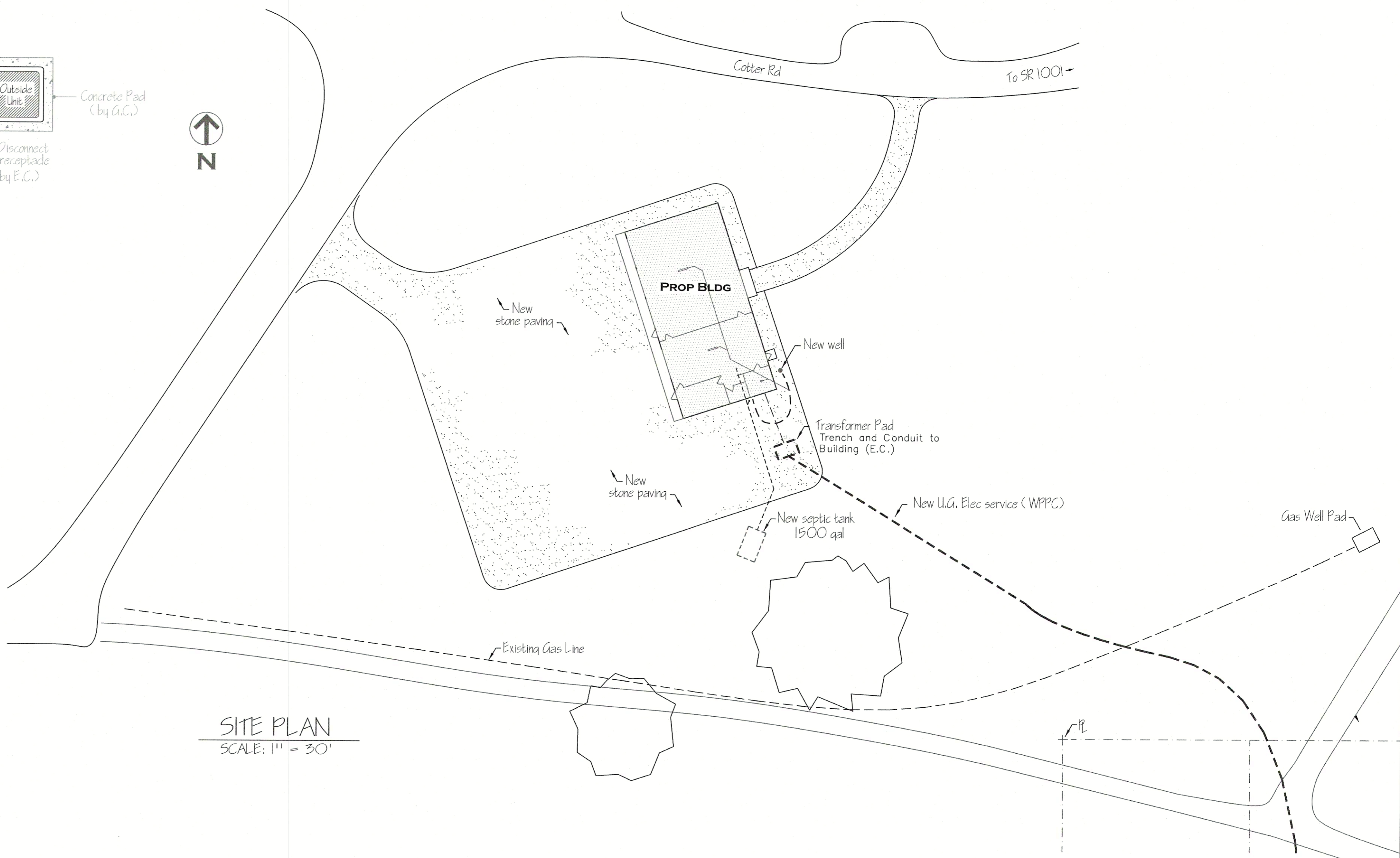
Product Specifications	Electrical Panel	Gas Meter
5 inch Trunk System 854 x 80 Panels	Bosch Connected Control	T-8733-848-001
Support 2 Breaker Systems (80C and 80H)	WEL-FAB, Emergency Stop	WEL-FAB, Emergency Stop
Cables Required for Installation	WEL-FAB, Emergency Stop	WEL-FAB, Emergency Stop
7 Heavy Terminals: G, Y, T, N, W, X, W, X, W, X, W, X	WEL-FAB, Emergency Stop	WEL-FAB, Emergency Stop
3 Break Terminals: W, X, W, X, W, X, W, X, W, X	WEL-FAB, Emergency Stop	WEL-FAB, Emergency Stop
WEL-FAB, Emergency Stop	WEL-FAB, Emergency Stop	WEL-FAB, Emergency Stop
WEL-FAB, Emergency Stop	WEL-FAB, Emergency Stop	WEL-FAB, Emergency Stop
WEL-FAB, Emergency Stop	WEL-FAB, Emergency Stop	WEL-FAB, Emergency Stop
WEL-FAB, Emergency Stop	WEL-FAB, Emergency Stop	WEL-FAB, Emergency Stop

Product Specifications	Electrical Panel	Gas Meter
5 inch Trunk System 854 x 80 Panels	Bosch Connected Control	T-8733-848-001
Support 2 Breaker Systems (80C and 80H)	WEL-FAB, Emergency Stop	WEL-FAB, Emergency Stop
Cables Required for Installation	WEL-FAB, Emergency Stop	WEL-FAB, Emergency Stop
7 Heavy Terminals: G, Y, T, N, W, X, W, X, W, X, W, X	WEL-FAB, Emergency Stop	WEL-FAB, Emergency Stop
3 Break Terminals: W, X, W, X, W, X, W, X, W, X	WEL-FAB, Emergency Stop	WEL-FAB, Emergency Stop
WEL-FAB, Emergency Stop	WEL-FAB, Emergency Stop	WEL-FAB, Emergency Stop
WEL-FAB, Emergency Stop	WEL-FAB, Emergency Stop	WEL-FAB, Emergency Stop
WEL-FAB, Emergency Stop	WEL-FAB, Emergency Stop	WEL-FAB, Emergency Stop
WEL-FAB, Emergency Stop	WEL-FAB, Emergency Stop	WEL-FAB, Emergency Stop

Product Specifications	Electrical Panel	Gas Meter
5 inch Trunk System 854 x 80 Panels	Bosch Connected Control	T-8733-848-001
Support 2 Breaker Systems (80C and 80H)	WEL-FAB, Emergency Stop	WEL-FAB, Emergency Stop
Cables Required for Installation	WEL-FAB, Emergency Stop	WEL-FAB, Emergency Stop
7 Heavy Terminals: G, Y, T, N, W, X, W, X, W, X, W, X	WEL-FAB, Emergency Stop	WEL-FAB, Emergency Stop
3 Break Terminals: W, X, W, X, W, X, W, X, W, X	WEL-FAB, Emergency Stop	WEL-FAB, Emergency Stop
WEL-FAB, Emergency Stop	WEL-FAB, Emergency Stop	WEL-FAB, Emergency Stop
WEL-FAB, Emergency Stop	WEL-FAB, Emergency Stop	WEL-FAB, Emergency Stop
WEL-FAB, Emergency Stop	WEL-FAB, Emergency Stop	WEL-FAB, Emergency Stop
WEL-FAB, Emergency Stop	WEL-FAB, Emergency Stop	WEL-FAB, Emergency Stop



PLAN VIEW
SCALE: 1/4" = 1'-0"



SITE PLAN
SCALE: 1" = 30'



PENNSYLVANIA GAME COMMISSION		
STATE GAME LANDS #025	BENZINGER TWP.	ELK CO.
ROW SITE PLAN		
REVISIONS	PROJECT NO.	PC-025-20-1
	DRAWING NO.	SITE
	DRAWN BY:	ACK
	DATE:	02-18-20
	SHEET NO.	1 OF 1