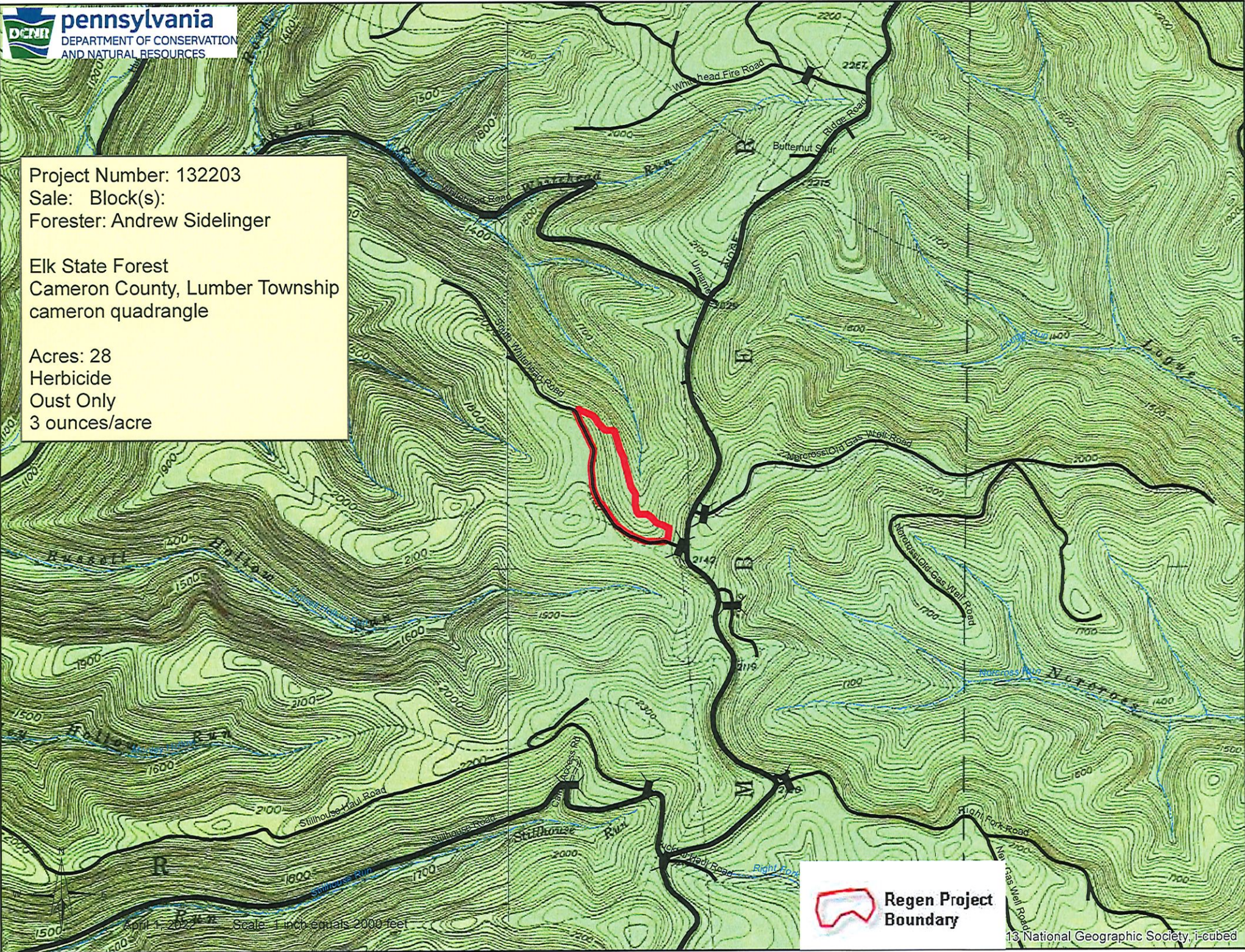


Project Number: 132203
Sale: Block(s):
Forester: Andrew Sidelinger

Elk State Forest
Cameron County, Lumber Township
cameron quadrangle

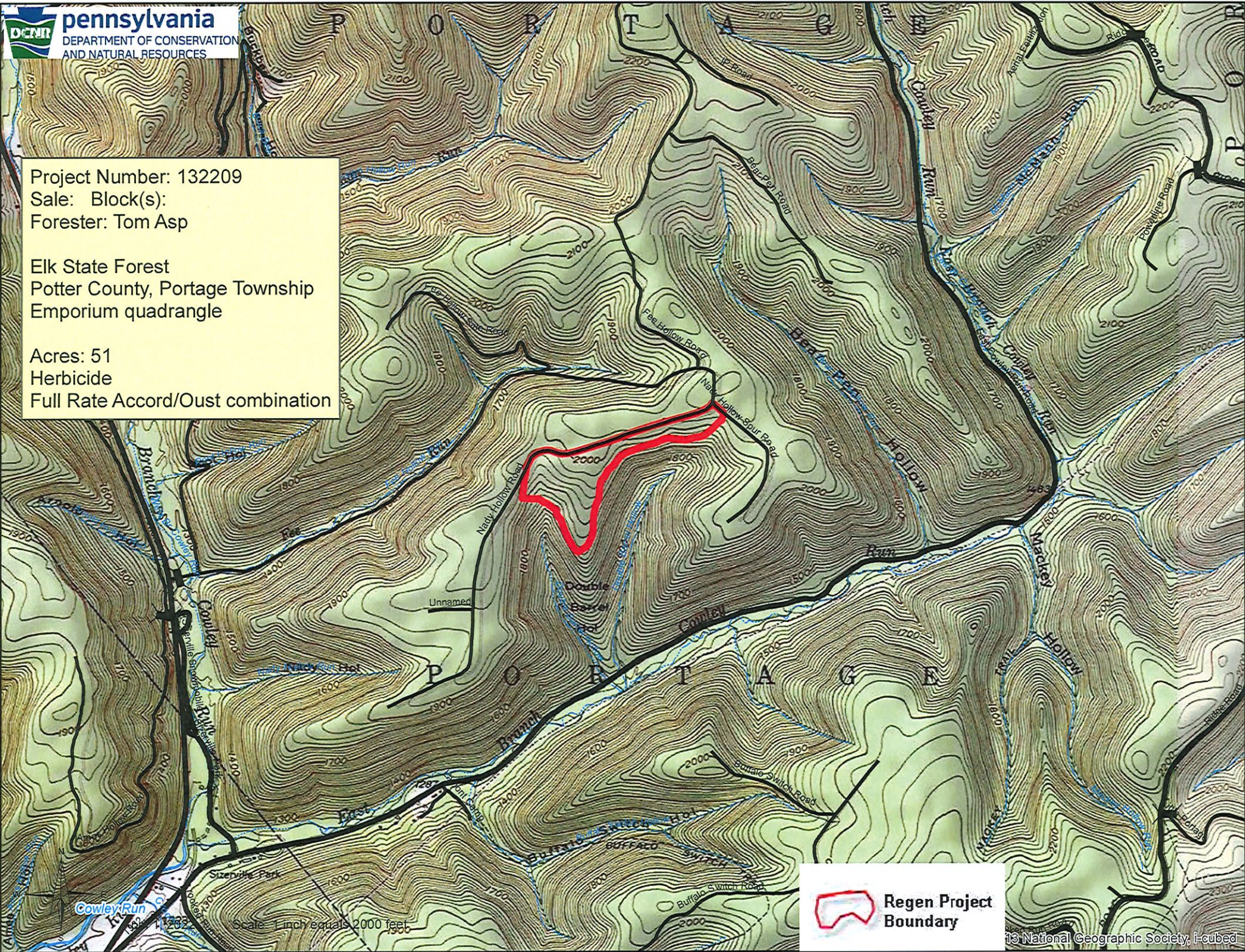
Acres: 28
Herbicide
Oust Only
3 ounces/acre

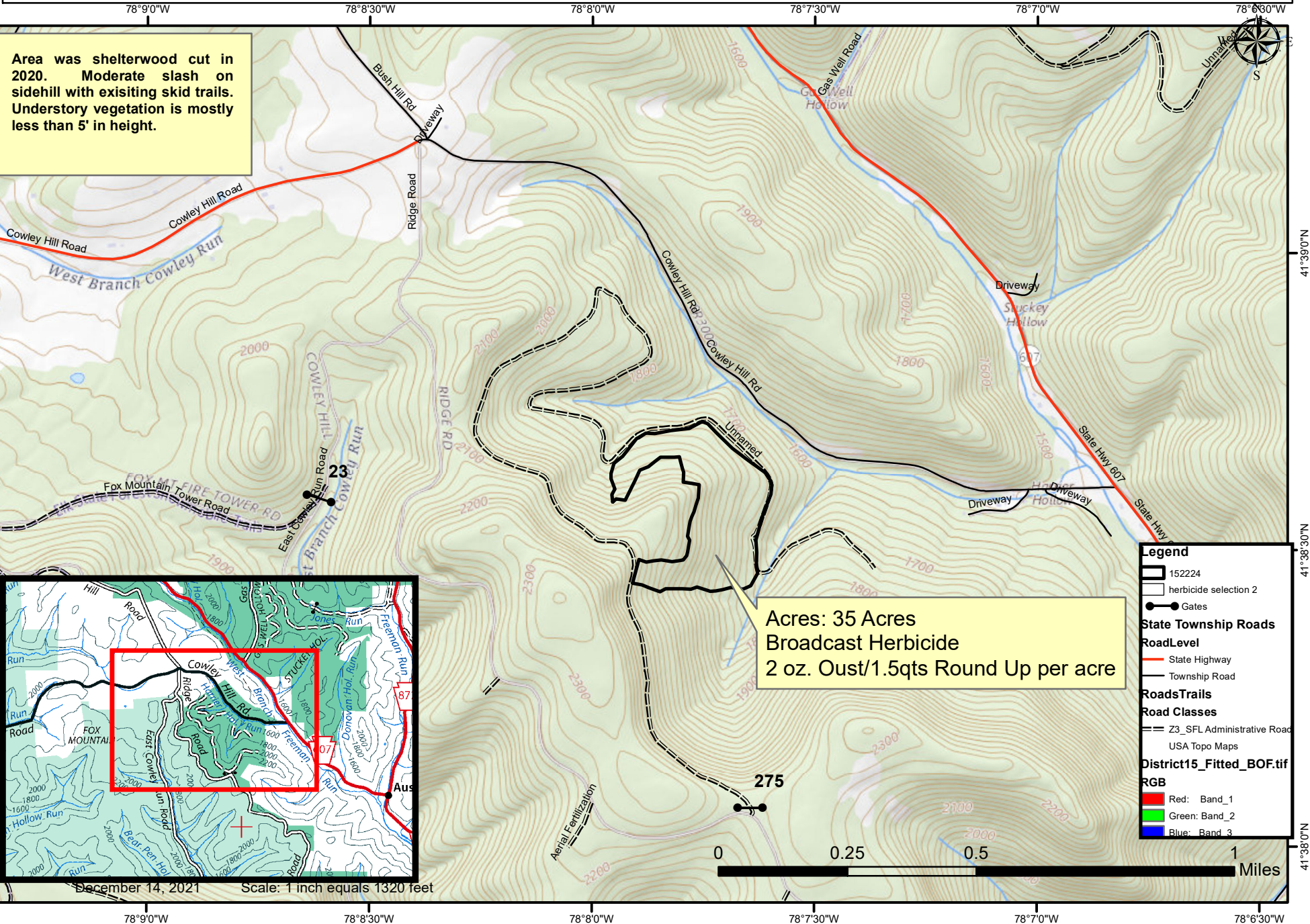


Project Number: 132209
Sale: Block(s):
Forester: Tom Asp

Elk State Forest
Potter County, Portage Township
Emporium quadrangle

Acres: 51
Herbicide
Full Rate Accord/Oust combination





78°12'0"W

78°11'30"W

78°11'0"W

78°10'30"W



41°44'0"N

41°44'0"N

41°43'30"N

41°43'30"N

41°43'0"N

41°43'0"N

41°42'30"N

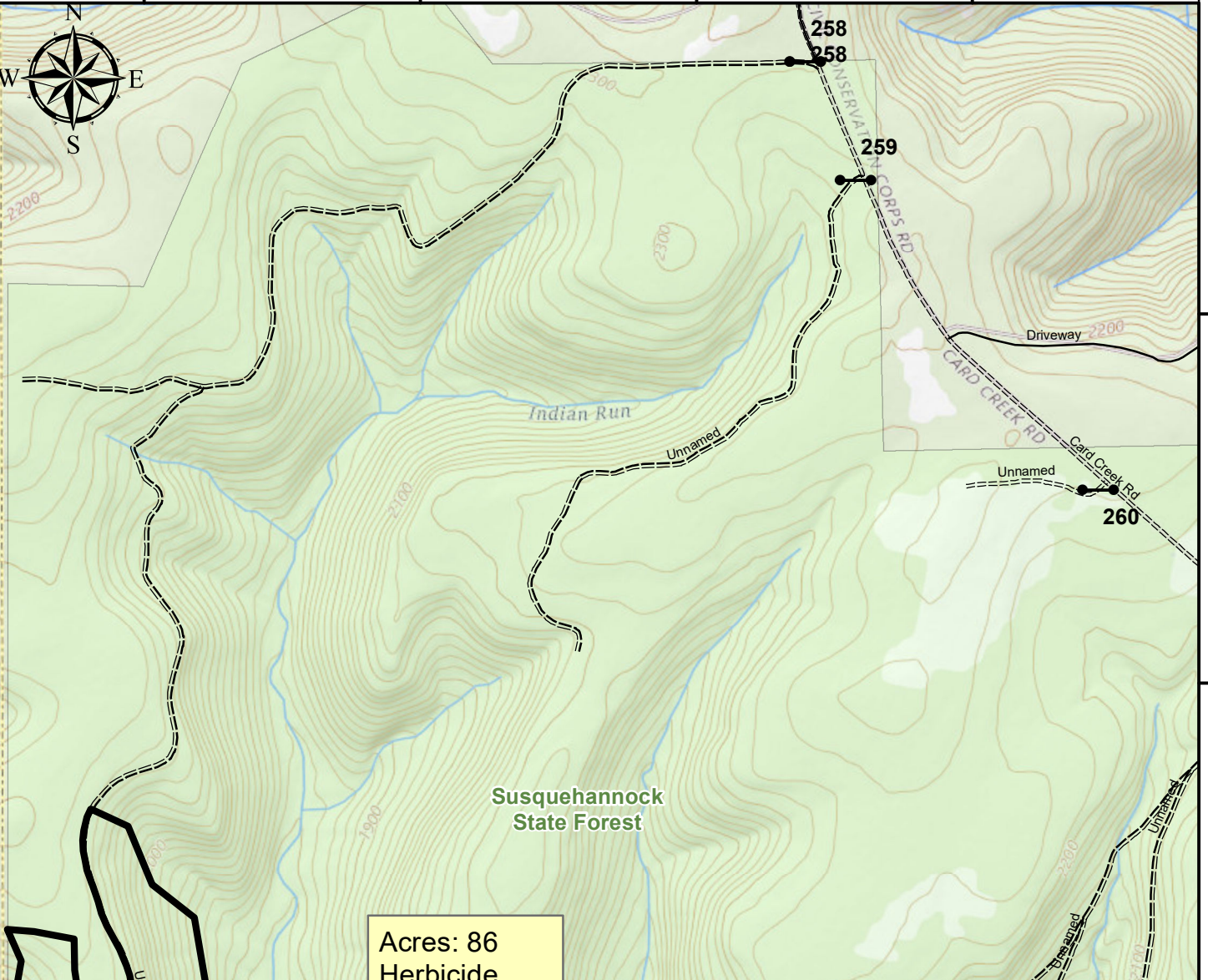
41°42'30"N

78°12'0"W

78°11'30"W

78°11'0"W

78°10'30"W



Acres: 86
Herbicide
2 oz Oust
1.5QT Accord

Legend

- 152243
- Gates

State Township Roads

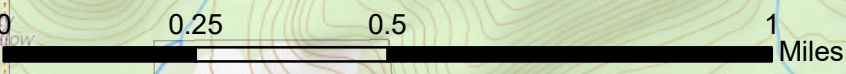
RoadLevel

- Township Road

RoadsTrails

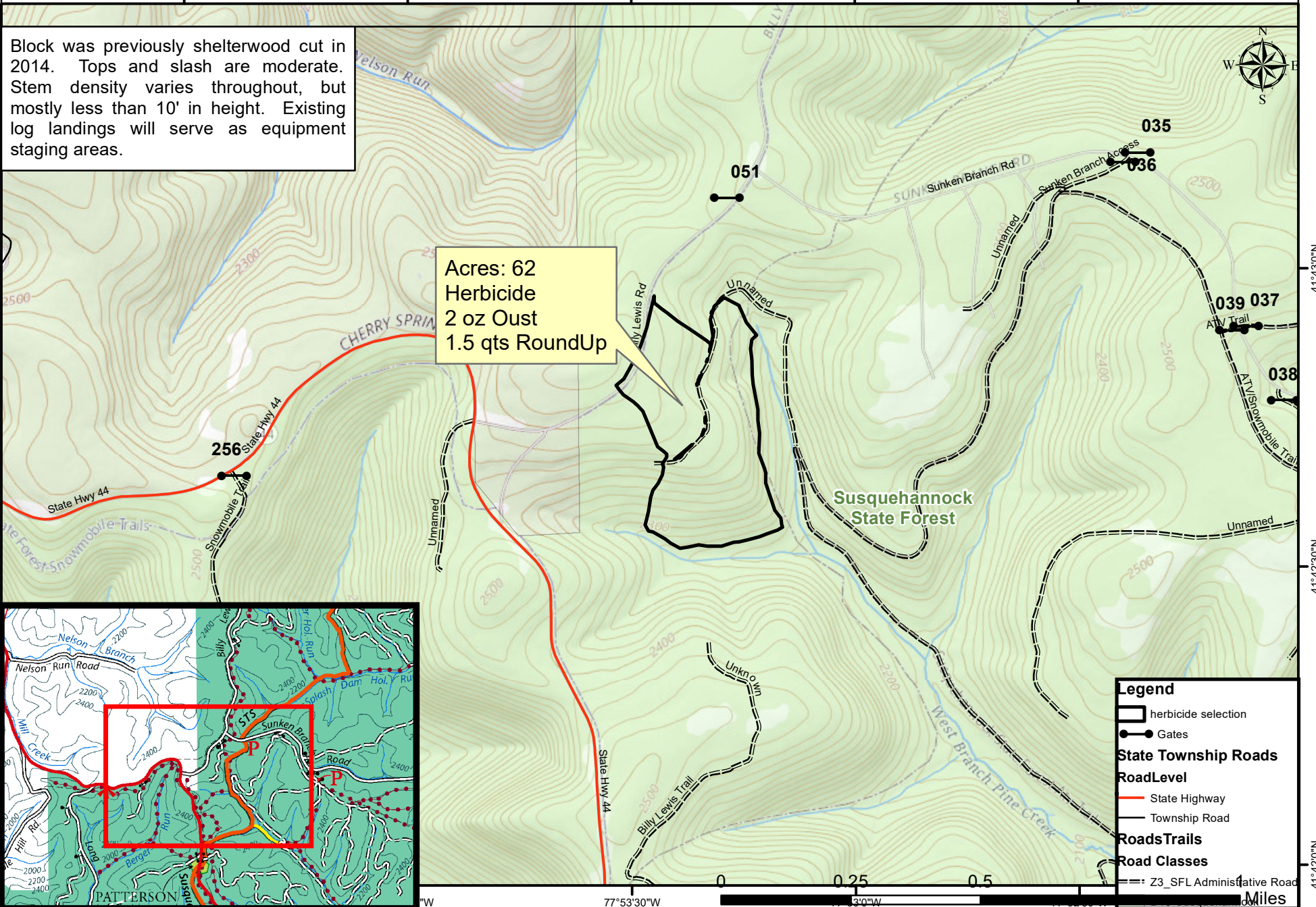
Road Classes

- Z2_SFL Drivable Trail
- Z3_SFL Administrative Road
- D15-Susquehannock



Block was previously shelterwood cut in 2014. Tops and slash are moderate. Stem density varies throughout, but mostly less than 10' in height. Existing log landings will serve as equipment staging areas.

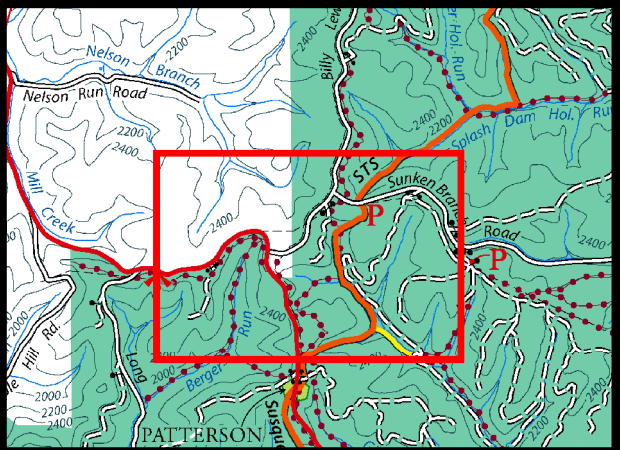
Acres: 62
 Herbicide
 2 oz Oust
 1.5 qts RoundUp

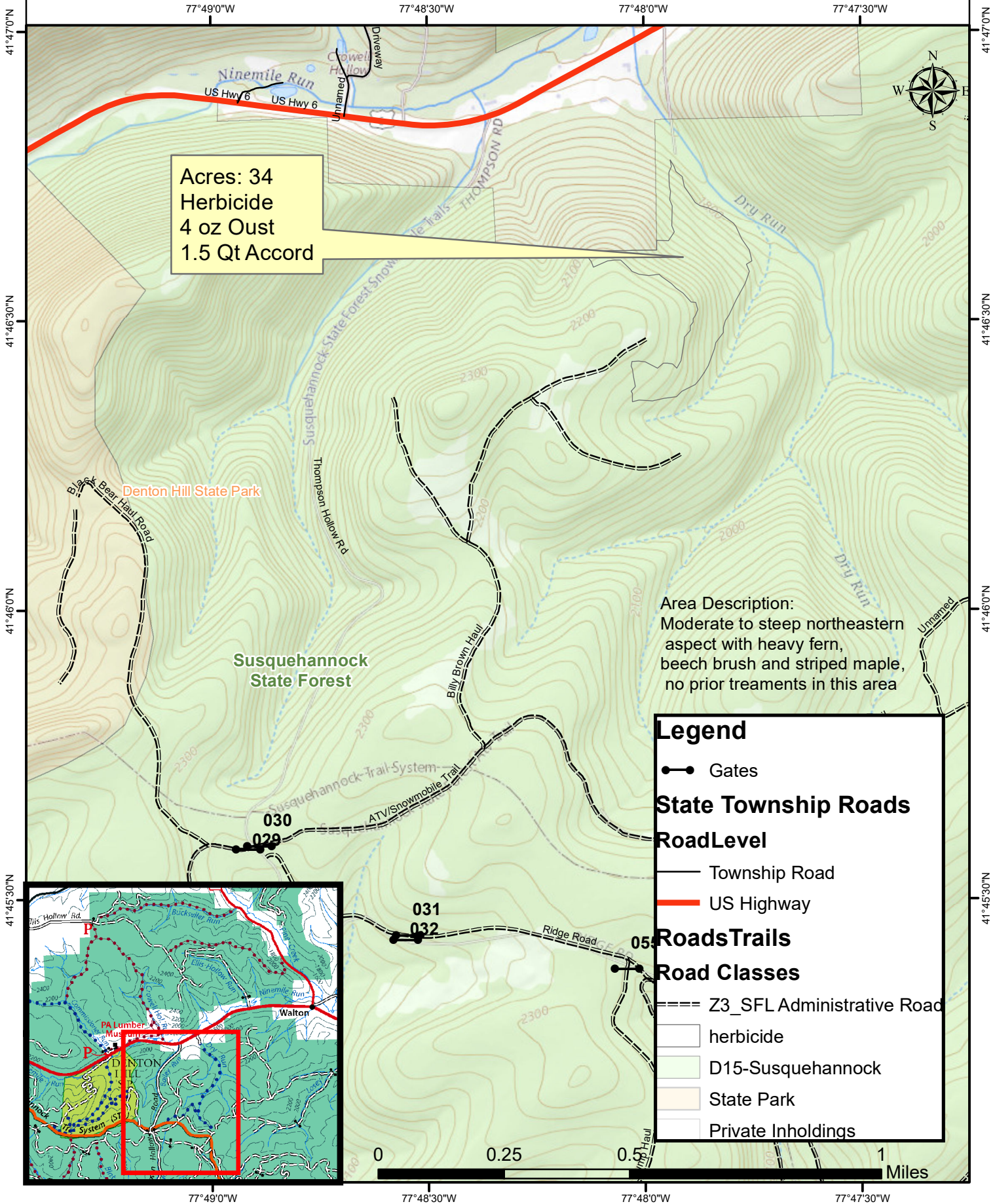


Legend

- herbicide selection
- Gates
- State Township Roads**
- RoadLevel**
- State Highway
- Township Road
- RoadsTrails**
- Road Classes**
- Z3_SFL Administrative Road

0 0.25 0.5 1 Miles



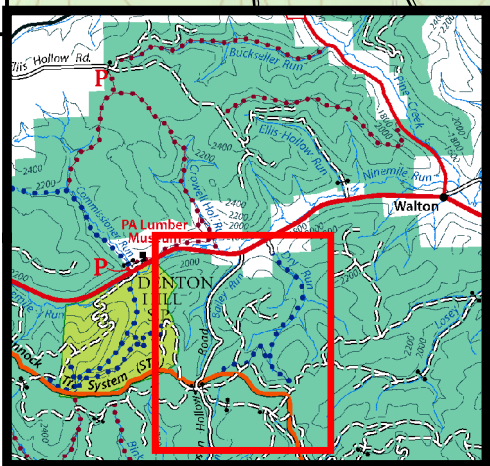


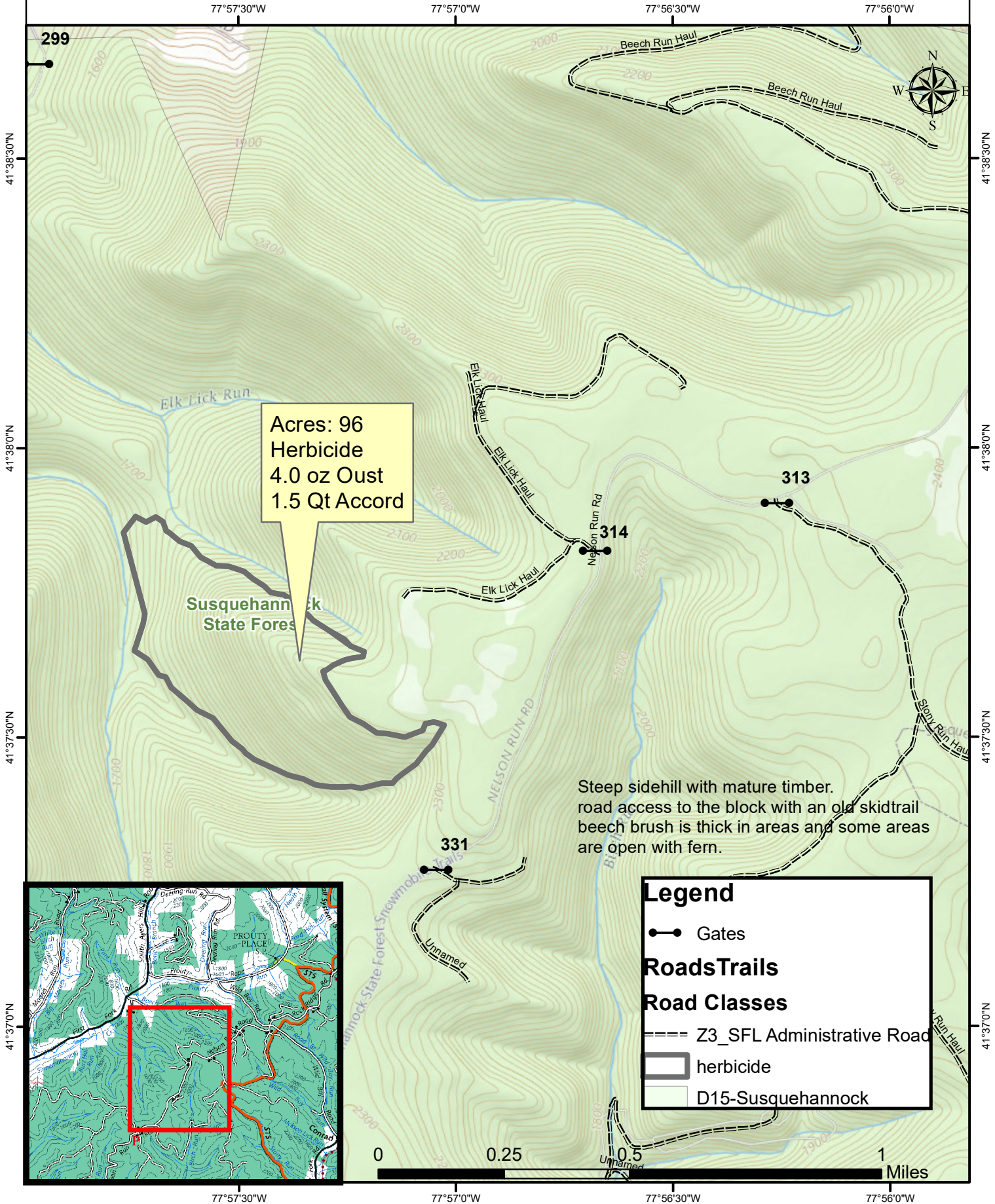
Acres: 34
Herbicide
4 oz Oust
1.5 Qt Accord

Area Description:
Moderate to steep northeastern
aspect with heavy fern,
beech brush and striped maple,
no prior treatments in this area

Legend

- Gates
- State Township Roads**
- RoadLevel**
- Township Road
- US Highway
- RoadsTrails**
- Road Classes**
- Z3_SFL Administrative Road
- herbicide
- D15-Susquehannock
- State Park
- Private Inholdings



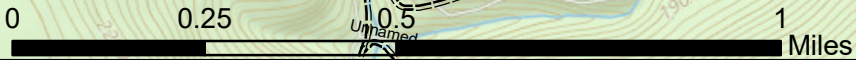


Acres: 96
 Herbicide
 4.0 oz Oust
 1.5 Qt Accord

Steep sidehill with mature timber.
 road access to the block with an old skidtrail
 beech brush is thick in areas and some areas
 are open with fern.

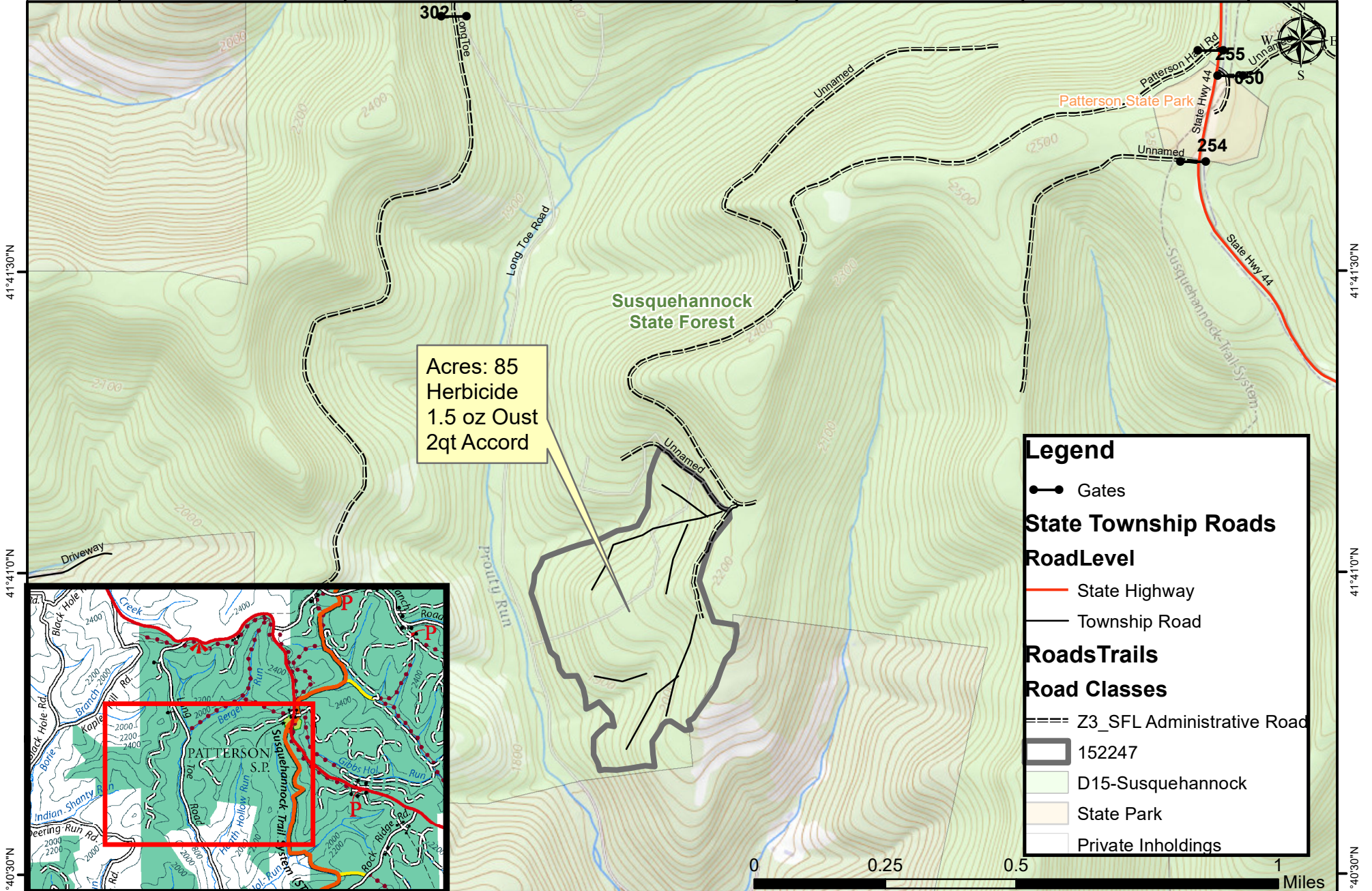
Legend

- Gates
- Roads Trails**
- Road Classes**
- Z3_SFL Administrative Road
- herbicide
- D15-Susquehannock



299
 41°38'30"N
 41°38'0"N
 41°37'30"N
 41°37'0"N
 77°57'30"W
 77°57'0"W
 77°56'30"W
 77°56'0"W

77°56'0"W 77°55'30"W 77°55'0"W 77°54'30"W 77°54'0"W 77°53'30"W



Acres: 85
 Herbicide
 1.5 oz Oust
 2qt Accord

Legend

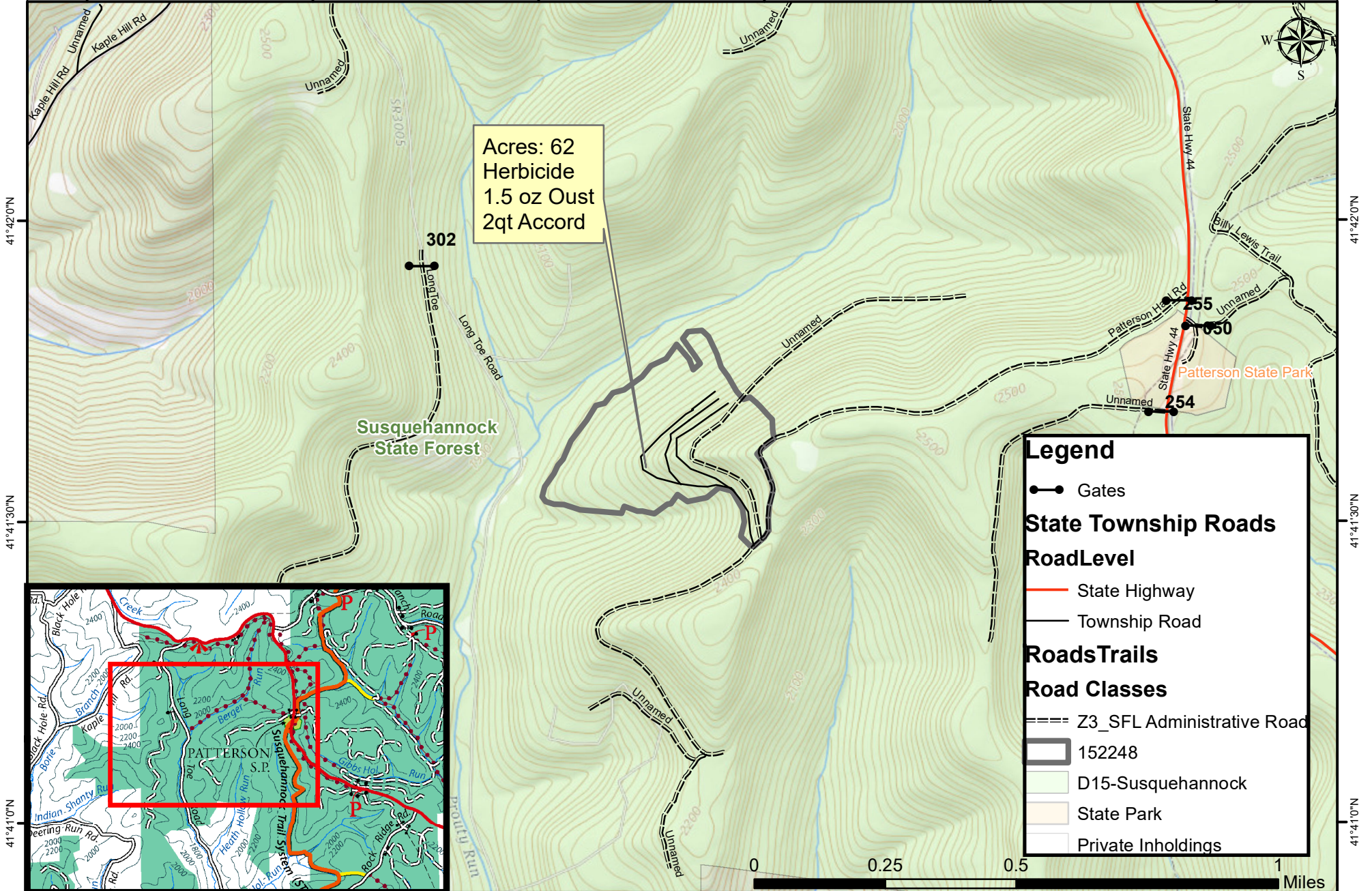
- Gates
- State Township Roads**
- RoadLevel**
- State Highway
- Township Road
- RoadsTrails**
- Road Classes**
- ==== Z3_SFL Administrative Road
- ▭ 152247
- ▭ D15-Susquehannock
- ▭ State Park
- ▭ Private Inholdings



41°40'30"N 41°41'0"N 41°41'30"N 41°40'30"N

77°56'0"W 77°55'30"W 77°55'0"W 77°54'30"W 77°54'0"W 77°53'30"W

77°56'0"W 77°55'30"W 77°55'0"W 77°54'30"W 77°54'0"W 77°53'30"W



Acres: 62
 Herbicide
 1.5 oz Oust
 2qt Accord

Legend

- Gates
- State Township Roads**
- RoadLevel**
- State Highway
- Township Road
- RoadsTrails**
- Road Classes**
- Z3_SFL Administrative Road
- █ 152248
- █ D15-Susquehannock
- █ State Park
- █ Private Inholdings



77°56'0"W 77°55'30"W 77°55'0"W 77°54'30"W 77°54'0"W 77°53'30"W

41°42'0"N
41°41'30"N
41°41'0"N

41°42'0"N
41°41'30"N
41°41'0"N

15-2249
176 Acres
Broadcast Herbicide-Steep
Wharton Township, Potter County
Cory Gulvas
Scale 1"=1320'

41.53999, -77.92337 (coordinates to project area)
*Access is McConnell Road and Gate 812
-no skid trails persist within project area, no prior management done
*Northeast side contains beech brush in varying densities.
Southwest portion contains beech brush and fern in varying densities.

